

Figure 1. Location of Canyon Creek WMA, approximately 26 miles northwest of Helena, along the Lincoln Road (Highway 279), Lewis and Clark County.

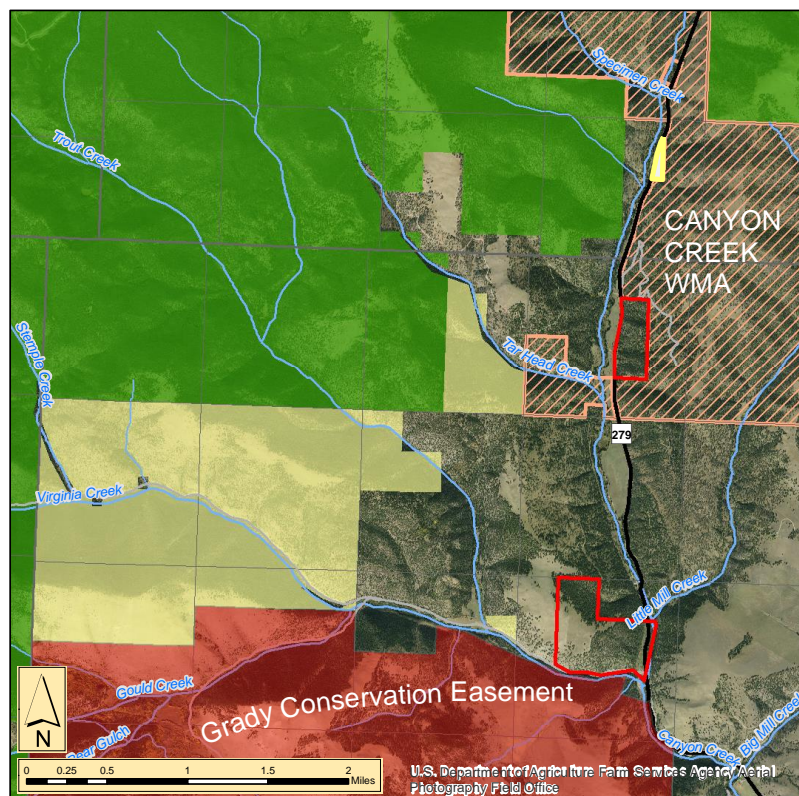


Figure 2. Proposed additions to Canyon Creek WMA totaling approximately 233 acres (Cartan – Red Polygons) and 4-7 acres (Palmquist – Yellow Polygon).