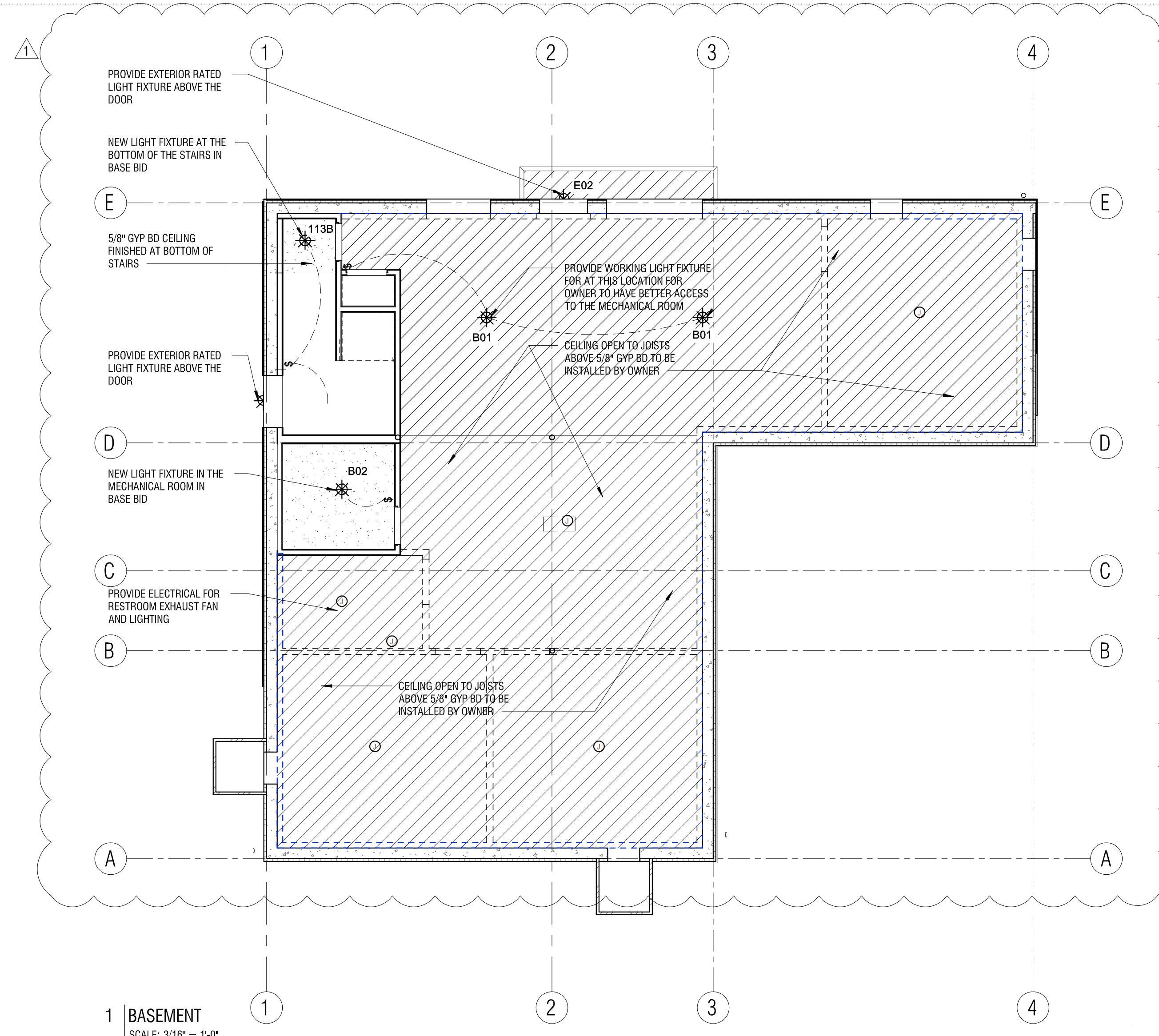
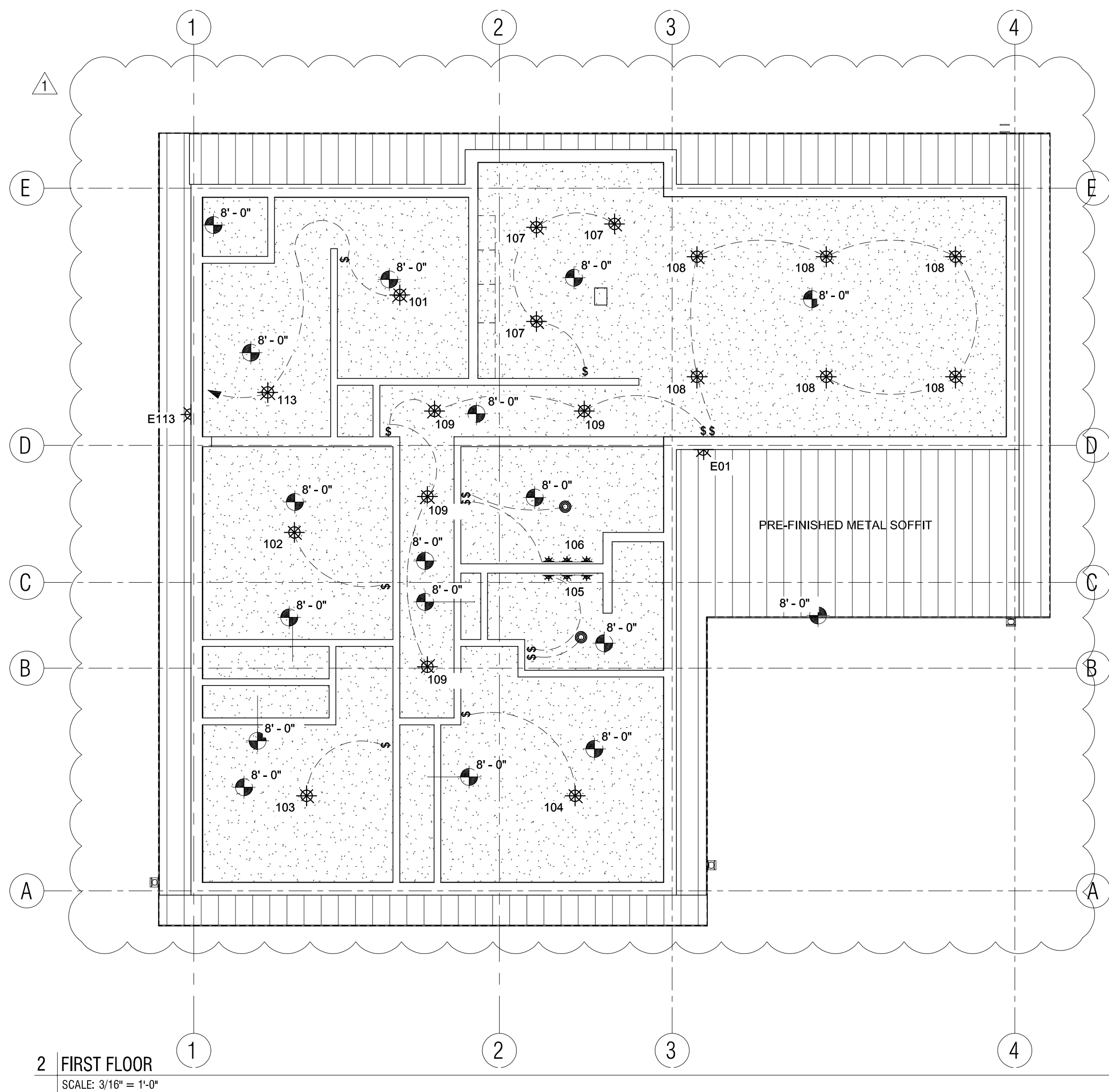


**FWP BIG SPRINGS RESIDENCE**

Big Springs Trout Hatchery, Lewistown, MT 59457  
Paul Valle, Contact 406.841.4013 pvalle@mt.gov



**ELECTRICAL GENERAL NOTES:**

- GENERAL: UNLESS SPECIFICALLY INDICATED OTHERWISE, ALL WORK SHOWN ON THE ELECTRICAL DRAWINGS IS NEW WORK TO BE PROVIDED UNDER THIS CONTRACT.
- COORDINATION: COORDINATE AND COOPERATE WITH ALL TRADES ON THE PROJECT.
- RECORD DRAWINGS: SECURE AN EXTRA SET OF ELECTRICAL DRAWINGS TO BE KEPT ON SITE AND MARK DAILY. THE DRAWINGS IN RED AS THE PROJECT PROGRESSES IN ORDER TO KEEP AN ACCURATE RECORD OF ALL DEVIATIONS BETWEEN THE WORK SHOWN ON THE DRAWINGS AND THE WORK WHICH IS ACTUALLY INSTALLED. THESE MARKED DRAWINGS SHALL REFLECT ANY AND ALL CHANGES AND REVISIONS TO THE ORIGINAL DESIGN WHICH EXISTS IN THE COMPLETED WORK. DELIVER THE MARKED DRAWINGS TO THE <ARCHITECT/ENGINEER> AT PROJECT CLOSE-OUT.
- TESTS: TEST ALL WIRING FOR CONTINUITY AND GROUNDS BEFORE CONNECTING ANY FIXTURES OR DEVICES. PERFORM INSULATION RESISTANCE TESTS ON ALL WIRING #8 OR LARGER TO ENSURE THAT ALL PORTIONS ARE FREE FROM SHORT-CIRCUITS AND GROUNDS.
- INSPECTIONS: ARRANGE ALL NECESSARY INSPECTIONS. DELIVER ALL REQUIRED INSPECTION CERTIFICATES TO THE OWNER.
- GROUNDING: PROVIDE GROUNDING IN ACCORDANCE WITH THE NEC FOR THE ELECTRICAL SYSTEM INCLUDING EQUIPMENT FRAMES, CONDUITS, SWITCHES, CONTROLLERS, WIRE-WAYS, NEUTRAL CONDUCTORS, AND OTHER EQUIPMENT. PROVIDE A GROUNDING CONDUCTOR IN ALL POWER CIRCUITS.
- LABELS: PROVIDE LABELS FOR ALL PANELBOARDS, CABINETS, SAFETY SWITCHES, MOTOR-DISCONNECT SWITCHES, AND MOTOR CONTROLLERS. LABELS SHALL BE MACHINE ENGRAVED, LAMINATED PLASTIC, PERMANENTLY ATTACHED WITH SELF-TAPPING SCREWS OR RIVETS. DO NOT USE SELF-ADHESIVE LABELS. J-BOX LABELING: LABEL ALL JUNCTION BOXES WITH PERMANENT MARKER IDENTIFYING CIRCUIT NUMBER AND PANELBOARD OR CIRCUITS WITHIN.
- PANEL DIRECTORY: PROVIDE TYPEWRITTEN PANELBOARD DIRECTORY CARD IN EACH PANELBOARD INCLUDING EXISTING PANELBOARDS MODIFIED FOR THIS PROJECT WITH CIRCUIT LOAD INFORMATION AND ROOM NUMBER CLEARLY IDENTIFIED. USE ACTUAL ROOM NUMBERS IN THE BUILDING, NOT THE ROOM NUMBERS SHOWN ON THE CONTRACT DRAWINGS, AS THEY ARE OFTEN DIFFERENT.
- MOTOR COORDINATION: MOTORS, MOTOR STARTERS, CONTROLLERS, INTEGRAL DISCONNECT SWITCHES, AND CONTACTORS SHALL BE PROVIDED WITH THEIR RESPECTIVE PIECES OF EQUIPMENT BY THE EQUIPMENT SUPPLIER. COMMUNICATE WITH THE TRADES PROVIDING THE EQUIPMENT, VERIFYING ALL REQUIREMENTS, PROVIDE ALL ELECTRICAL CONNECTIONS REQUIRED THEREIN, AND INSTALL MOTOR STARTERS.
- MOTOR DISCONNECTS: ALL MOTORS SHALL HAVE DISCONNECTING MEANS. MOTOR FUSE PROTECTION: WHERE FUSE PROTECTION IS SPECIFICALLY REQUIRED BY THE EQUIPMENT MANUFACTURER, PROVIDE FUSE SWITCHES IN LIEU OF NON-FUSE SWITCHES OR IN LIEU OF ENCLOSED CIRCUIT BREAKERS, OR OTHER DEVICES INDICATED.
- CONNECTION DETAILS: SECURE APPROVED SHOP DRAWINGS SHOWING WIRING DIAGRAMS, ROUGH-IN AND HOOK UP DETAILS FROM OTHER INVOLVED CONTRACTORS FOR EQUIPMENT WHICH MUST BE CONNECTED ELECTRICALLY.
- EQUIPMENT DETAILS: MECHANICAL EQUIPMENT WILL BE FURNISHED AND INSTALLED BY THE MECHANICAL CONTRACTOR. THE LOCATIONS SHOWN ON THE ELECTRICAL DRAWINGS ARE APPROXIMATE. COORDINATE WITH THE MECHANICAL CONTRACTOR TO DETERMINE THE EXACT LOCATION OF EACH PIECE OF EQUIPMENT AND DETERMINE THE EXACT ROUGH-IN AND CONNECTION REQUIREMENTS.
- STARTER MOUNTING: WHERE AN INDIVIDUALLY MOUNTED SAFETY SWITCH, STARTER OR CIRCUIT BREAKER IS SHOWN ADJACENT TO ITS RESPECTIVE LOAD AND NOT MOUNTED ON A WALL, PROVIDE ALL SUPPORTS, BRACKETS, ANCHORING, ETC. NECESSARY TO PROPERLY SUPPORT THE DEVICE. FIRE PROOFING: FOR ANY WALL OR FLOOR PENETRATIONS THROUGH FIRE RATED STRUCTURES PROVIDE FIRE-PROOFING TO SEAL ALL THE PENETRATIONS AFTER THE CONDUIT HAS BEEN INSTALLED. FIRE PROOFING FOR PENETRATIONS SHALL BE UL APPROVED PER THE THE PENETRATION MADE IN ORDER TO MAINTAIN FIRE RATED INTEGRITY OF THE STRUCTURE. CLEAN UP: ON PROJECT CLOSE-OUT, CLEAN ALL ELECTRICAL DEVICES, LIGHTING FIXTURES, LAMPS AND LENSES, AND REMOVE ALL PAINT SPATTERS FROM DEVICES, FIXTURES, AND PLATES. REPLACE ALL INOPERATIVE LAMPS.
- OWNER FURNISHED EQUIPMENT: CONTRACTOR SHALL OBTAIN CUT SHEETS, INSTALLATION DATA, AND ROUGH-IN REQUIREMENTS FOR OWNER FURNISHED. CONTRACTOR INSTALLED EQUIPMENT AND COORDINATE ROUGH-IN AND POWER REQUIREMENTS WITH THE OWNER'S REPRESENTATIVE PRIOR TO STARTING ANY ASSOCIATED WORK.
- CONDUIT ROUTING: ALL CONDUIT RUN OVERHEAD SHALL BE RUN AT THE BOTTOM OF THE FLOOR, ROOF STRUCTURE, OR LOWEST CHORD OF JOIST SPACE (AS APPLICABLE) ABOVE IN ORDER TO AVOID CONFLICTS WITH OTHER TRADES.
- EQUIPMENT DEMONSTRATION: PROVIDE A DEMONSTRATION OF THE OPERATION OF ALL ELECT.
- MECHANICAL EQUIPMENT ELECTRICAL CONNECTIONS: THE ELECTRICAL CONTRACTOR SHALL FURNISH, INSTALL AND CONNECT ALL POWER WIRING TO ALL MECHANICAL CONTRACTOR FURNISHED EQUIPMENT. THE MECHANICAL CONTRACTOR SHALL FURNISH, INSTALL AND CONNECT ALL CONTROL WIRING TO ALL FURNISHED EQUIPMENT, INCLUDING CONTROL DEVICES, STARTER, AND INTEGRAL DISCONNECT SWITCHES OF MECHANICAL CONTRACTOR FURNISHED EQUIPMENT.

**GENERAL NOTES - CEILING PLAN**

- CEILING HEIGHTS ARE FROM FINISHED FLOOR TO FINISHED SURFACE OF CEILING
- CEILING HEIGHTS ARE MEASURED ABOVE FLOOR OF ROOM THEY ARE IN.
- ALL CEILINGS ON FIRST FLOOR ARE TO BE TAPED, TEXTURED, AND PAINTED
- NO CEILINGS IN THE BASEMENT SHALL BE INCLUDED IN THE BASE BID U.L.O.

**LIGHT FIXTURE SCHEDULE**

ROOM NAME	RM #	FIXTURE	LIGHT BULB	EXHAUST FAN	NOTES
STAIRWAY	113	NUVO 60-6827	SATCO S9581		
BASEMENT STAIRWAY	113	Elite Round Slim LED RL655	SATCO S9581		
MUD ROOM	101	NUVO 60-6827	SATCO S9594		
HALLWAY	109	Elite Round Slim LED RL655	SATCO S9594		
BEDROOM #1	102	NUVO 60-207	SATCO S9594		
BEDROOM #2	103	NUVO 60-207	SATCO S9594		
MASTER BEDROOM	104	NUVO 60-207	SATCO S9594		
MASTER BATHROOM	105	NUVO 62-926		FV-0510VSL1	
BATHROOM	106	NUVO 62-926		FV-0510VSL1	
KITCHEN	107	Elite Round Slim LED RL655			
DINING / LIVING	108	Elite Round Slim LED RL655			
BASEMENT	B01	LH-11P	LED14A19F85010YVRP		
MECHANICAL	B02	Elite Round Slim LED RL655			
SOUTH PATIO	E01	Harvest RidgeTM 1 Light Wall Light Textured Black	SATCO S29876		
NORTH PATIO	E02	Harvest RidgeTM 1 Light Wall Light Textured Black	SATCO S29876		
EXTERIOR DOOR TO STAIR	E113	Harvest RidgeTM 1 Light Wall Light Textured Black	SATCO S29876		

**CEILING FINISH LEGEND**

- PAINTED GYPSUM BOARD CEILING
- PRE FINISHED METAL SOFFIT, WHITE
- OPEN TO JOISTS ABOVE
- PROVIDE JUNCTION BOX FOR ELECTRICAL CONNECTION
- NEW LIGHT FIXTURE
- NEW EXTERIOR RATED, WALL MOUNTED LIGHT FIXTURE

NOTE:  
1) IN RESTROOMS, AND MECHANICAL ROOM USE A MOLD RESISTANT GYP BOARD, (PURPLE BOARD).

PHASE REVISIONS  
ADDENDUM #1 01-26-2021

20011  
REFLECTED CEILING  
PLAN  
**A200**