

Hinsdale Wildlife Management Area

2004 Small Mammal Trapping and Species Inventory Report

Montana Fish, Wildlife, and Parks (MFWP)

Steve Carson, Adam Messer, Andrew Jakes, Ryan Rauscher

August 3-10, 2004



Hinsdale WMA is located in Valley County, about 35 miles west of Glasgow. This 255-acre WMA is situated in the Milk River Valley, and includes six miles of frontage on the Milk River. The associated floodplain provides excellent cover and forage for wildlife, including deer, songbirds, raptors, and small mammals.

Findings: 24 Captures of 6 Species

- Small mammal trapping lines (Table 3)
 - 20 captures of 4 species
- Mist net (Table 4)
 - 1 capture of 1 species
- Large Cage (Table 4)
 - 3 captures of 1 species

Table 1. Trapline Location and Habitat Type

Location #	Name	Habitat
1	line 1	upland grassland
2	line 2	willow/cottonwood riparian
3	line 3	upland grassland
4	line 4	riparian ash

Table 2. Capture Summary

Species Captured	Trapline				Mistnet	Large	Total
	1	2	3	4	1	Cage	
Little Brown Myotis					1		1
Deer Mouse	5	7	2	1			15
Meadow Vole		2					2
House Mouse		1					1
Common Raccoon						3	0
Unknown Mouse	1		1				2
Total Captures	6	10	3	1	1	3	24



Little Brown Myotis



Meadow Vole

Kristi DuBois 2004

Table 3. Trapline Summary

Trap Type	Trapline				Total Trap	Captures	Captures/100	Number of Species
	1	2	3	4	Nights		Trap Nights	
Snap, small (victor)	53	27	48	48	176	6	3.4	2
Snap, med (museum special)	29	21	32	33	115	11	9.6	4
Snap, large (rat)	10	2	9	10	31	0	0	0
Cage, small (sherman)	45	34	49	50	178	3	1.7	1
Cage, med (skunk)	8	8	10	10	36	0	0	0
Pitfall	25	25	25	25	100	0	0	0
Total Trap Nights	170	117	173	176	636			
Total Captures	6	13	3	1	23			
Captures/100 Trap Nights	3.5	11.1	1.7	0.6	3.6			
Number of Species	2	4	2	1				

Table 4. Trapsite Summary

Trap Type	Total Trap Nights	Total Captures	Captures/100 Trap Nights	Number of Species
Cage, large	20	3	15	1
Mistnet	3	1	33.3	1

Table 5. Miscellaneous Species

Northern Leopard Frog
American Kestrel
Eastern Kingbird
Gray Catbird
Western Meadowlark
Red Fox



American Kestrel

Trapline Photos



Trapline 1



Trapline 2



Trapline 3



Trapline 4

Photo Credits: MFWP staff unless otherwise noted.

Traps were not placed in the section of Hinsdale WMA to the Northwest of this area.

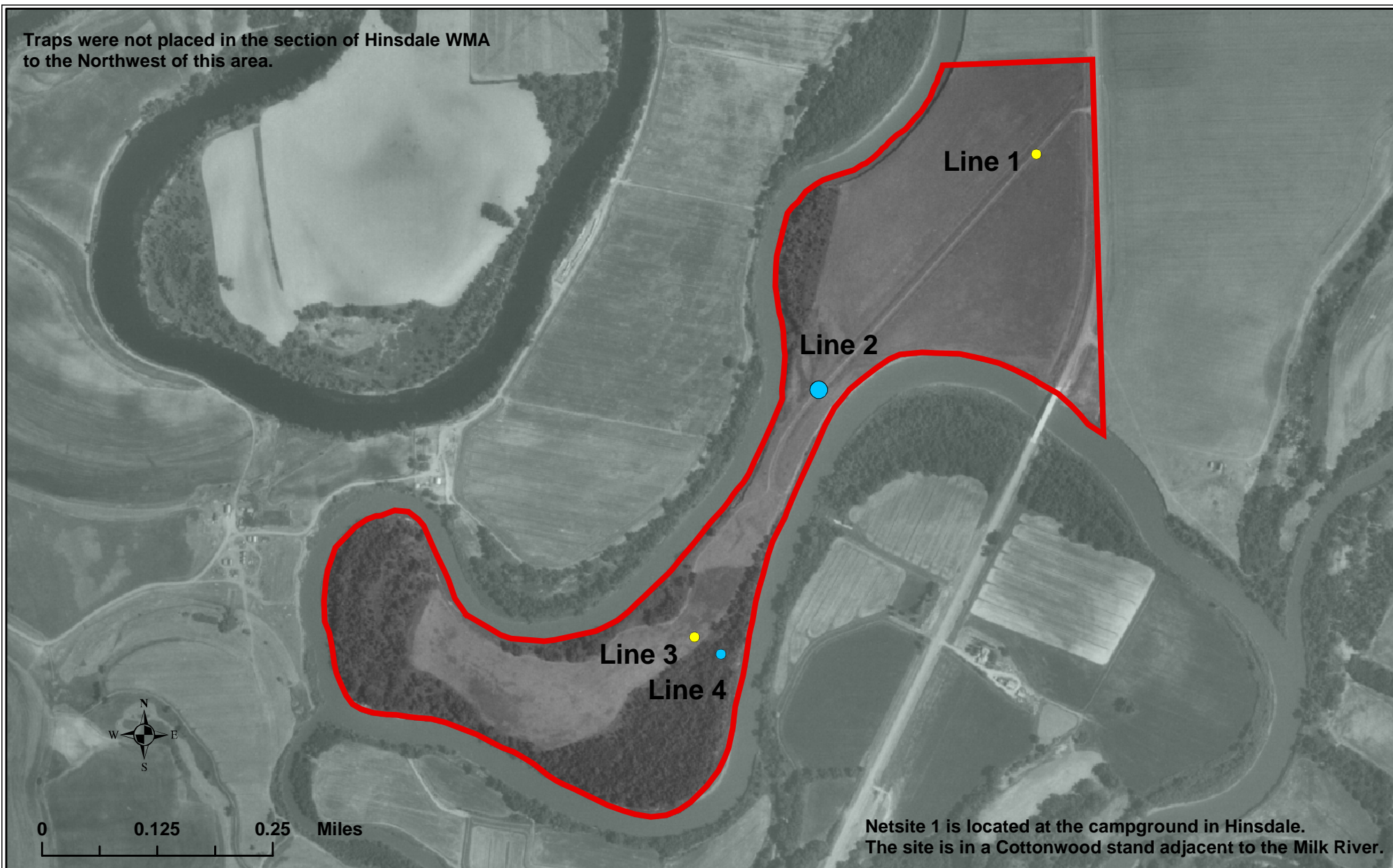


Figure 1:

Hinsdale WMA

Small Mammal Survey Site - Trapping Locations



Trapping Locations

General Landcover (Symbol color)

- | | | |
|---------------------|--|-------------------|
| ● Agriculture | ● Conifer Forest | ● Riparian |
| ● Barren / Badlands | ● Grassland | ● Shrub Grassland |
| ● Broadleaf Forest | * Not all landcover types were sampled at all sites. | |

Captures/100 trapnights (Symbol size)

* only calculated for trap lines

- | | | |
|---------|-----------|-------|
| ● 0 - 5 | ● >5 - 15 | ● >15 |
|---------|-----------|-------|

