

Rookery Wildlife Management Area
2004 Small Mammal Trapping and Species Inventory Report
Montana Fish, Wildlife, and Parks (MFWP)
Steve Carson, Adam Messer, Andrew Jakes, Ryan Rauscher
June 8-15, 2004



Deer Mouse

Rookery Wildlife Management Area (WMA) is located about 4 miles northwest of Havre in MFWP Region 6. The WMA consists of 2,236 acres of land, which the Milk River runs either through or adjacent to in the southern portion of the property. Some areas along the river have poor drainage and the soils there have a high saline content.

While most of the WMA is open grassland, some shelter is provided by shrubs, willows, and deciduous trees near the river. The WMA is open to the public for hunting and wildlife viewing.

Findings: 43 Captures of 3 Species (Table 3)

Table 1. Trapline location and Habitat Type

(Trapped with other areas, thus traplines do not originate at 1; Trapline photos not available)

12	line 12	sagebrush grassland
13	line 13	cottonwood riparian
14	line 14	cottonwood riparian
15	line 15	valley between upland grass hills
16	line 16	sagebrush grassland near pond
17	line 17	sagebrush grassland

Table 2. Capture Summary

Species Captured	Trapline						Total
	12	13	14	15	16	17	
Olive-Backed Pocket Mouse						1	1
Deer Mouse	4	12	15		8	2	41
Meadow Vole			1				1
Total Captures	4	12	16	0	8	3	43



Meadow Vole

Table 3. Trapline Summary

Trap Type	Trapline						Total Trap Nights	Total Captures	Captures/100 Trap Nights	Number of Species
	12	13	14	15	16	17				
Snap, small (victor)	50	50	48	49	44	38	279	2	0.72	1
Snap, med (museum special)	49	45	42	44	37	48	265	25	9.43	2
Snap, large (rat)	10	9	10			4	33	0	0	0
Cage, small (sherman)	50	48	49	50	50	40	287	15	5.23	2
Cage, med (skunk)		4	5	5	5		19	0	0	0
Pitfall	50	50	50	50	25	20	245	1	0.41	1
Total Trap Nights	209	206	204	198	161	150	1128			
Total Captures	4	12	16	0	8	3	43			
Captures/100 Trap Nights	1.9	5.8	7.8	0	5	2	3.81			
Number of Species	1	1	2	0	1	2				

Table 4. Miscellaneous Species Observed

Western Chorus Frog	Violet-Green Swallow
Pacific Chorus Frog	Black-Billed Magpie
Northern Leopard Frog	American Robin
American Bittern	European Starling
Osprey	Western Meadowlark
Northern Harrier	Mountain Cottontail
American Kestrel	Mule Deer
Gray Partridge	White-Tailed Deer
Ring-Necked Pheasant	Pronghorn
Spotted Sandpiper	Racer
Mourning Dove	Gopher Snake
Tree Swallow	

Photo Credits: MFWP staff unless otherwise indicated.

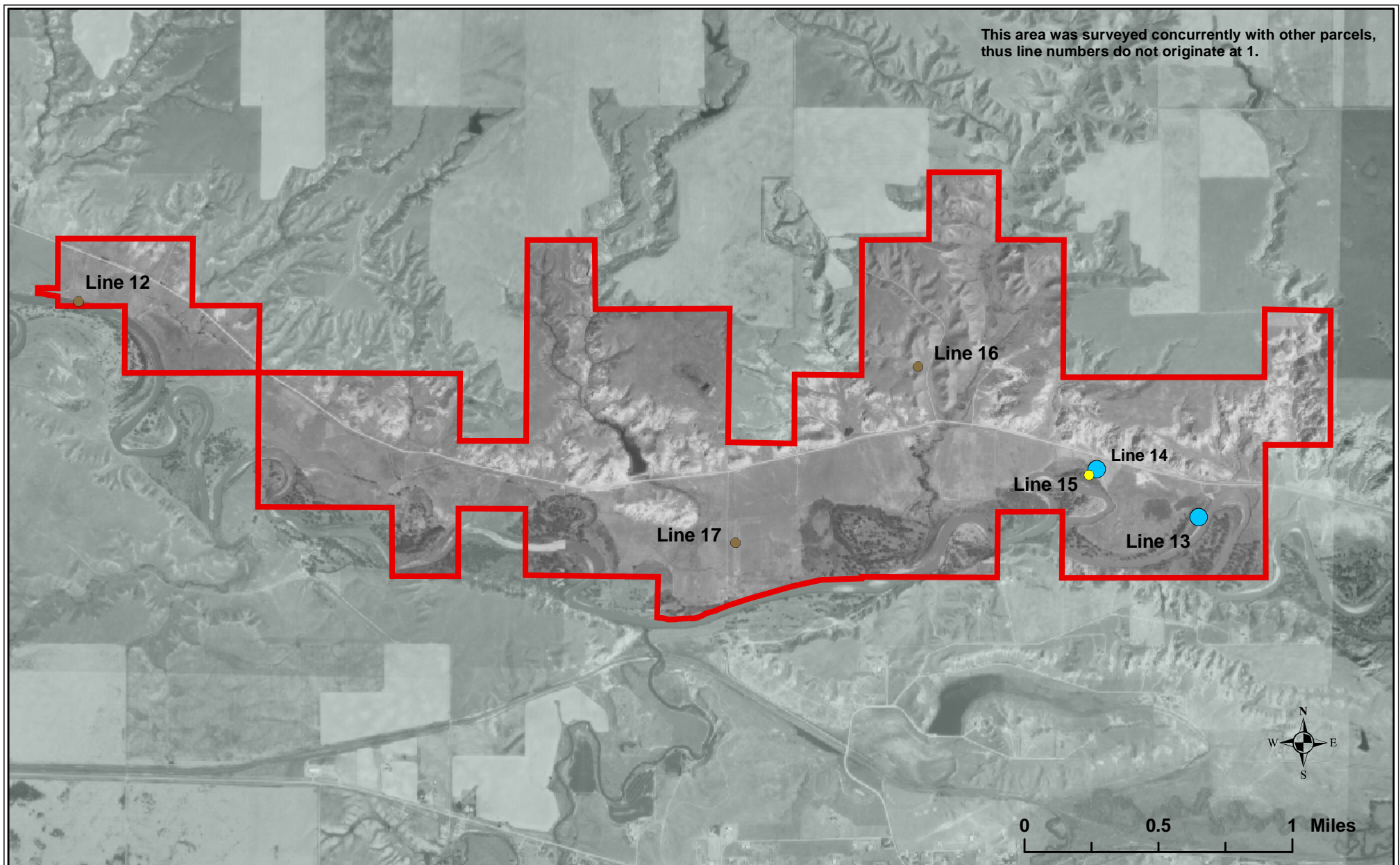


Figure 1:

Rookery WMA

Small Mammal Survey Site



**Montana Fish,
Wildlife & Parks**

12/2004 MAM

W:\Wildlife\SWIG_PROJECTS\SmallMammalSurveys\Project_data

Trapping Locations

General Landcover (Symbol color)

● Agriculture

● Barren / Badlands

● Broadleaf Forest

● Conifer Forest

● Grassland

* Not all landcover types were sampled at all sites.

● Riparian

● Shrub Grassland

Captures/100 trapnights (Symbol size)

* only calculated for trap lines

● 0 - 5

● >5 - 15

● >15

