

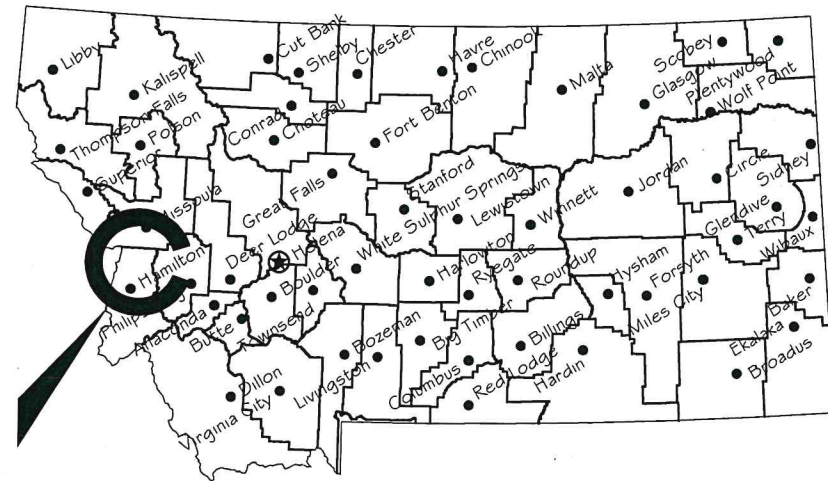
MONTANA FISH, WILDLIFE & PARKS

FORT OWEN STATE PARK

PARKING AREA DEVELOPMENT

near STEVENSVILLE, MONTANA

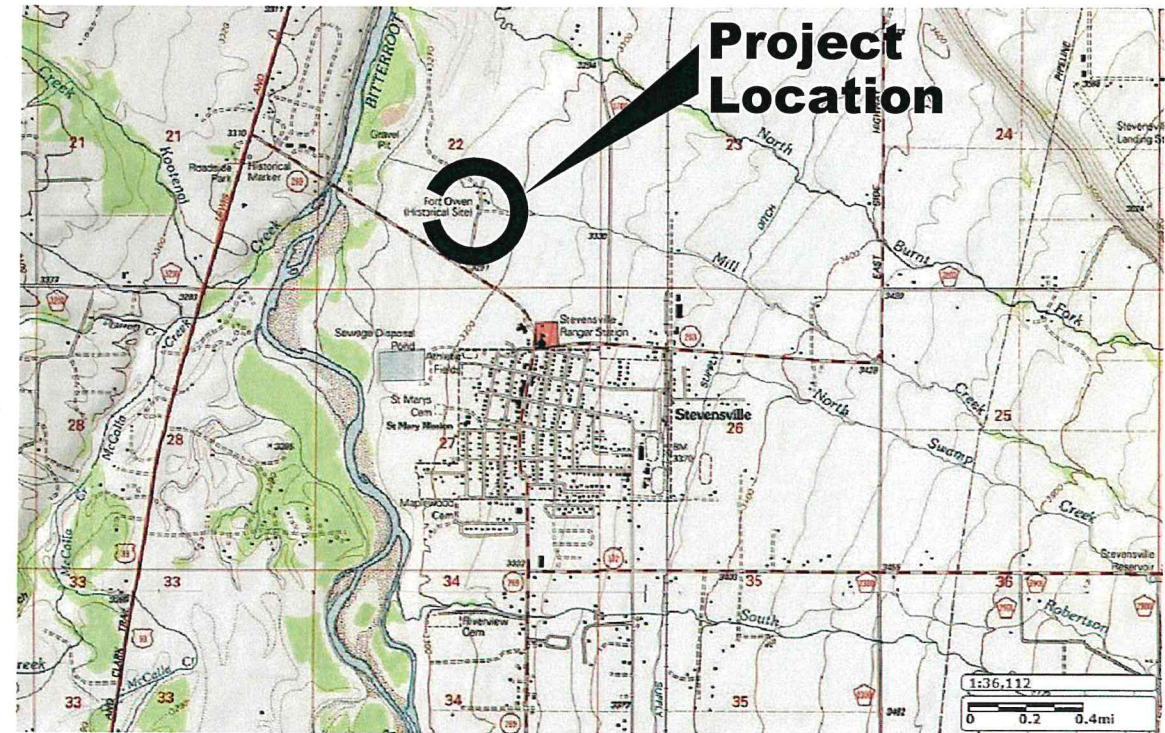
#7196108



Project Location

Location Map

No Scale



Project Location

Vicinity Map

No Scale

North



MONTANA FISH, WILDLIFE AND PARKS
DESIGN AND CONSTRUCTION

MAILING ADDRESS:

PO BOX 200701

HELENA, MT 59620-0701

TEL 406.841.4000

FAX 406.841.4004

fwp.mt.gov/Doing Business/Design&Construction

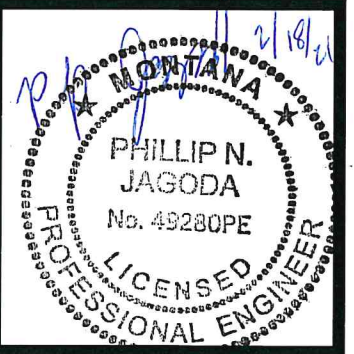
PHYSICAL ADDRESS:

1522 9th AVENUE

HELENA, MT 59601

DRAWING INDEX

- 1 COVER SHEET
- 2 SITE PLAN
- 3 DETAIL SHEET



P. Jagoda 2/16/2021
DRAWN BY: DATE:
P. Jagoda 2/16/2021
CHECKED BY: DATE:

APPROVED BY: DATE:
APPROVED BY: DATE:

APPROVED BY: DATE:
APPROVED BY: DATE:



MONTANA FISH,
WILDLIFE & PARKS

Cover Sheet
Fort Owen State Park



SHEET: 1 of 3

LEGEND

EXISTING FEATURES

CONTROL POINT

EDGE OF GRAVEL ROAD

EX. CONTOUR

EX. TREE

PROPOSED FEATURES

PROP. CONTOUR

PROP. GRAVEL SURFACING

STORMWATER FLOW ARROW

CONTROL POINT LEGEND

JESSOP 2" ALUMINUM CAP ON 5/8" REBAR

JESSOP 1 1/4" GREEN PLASTIC CAP ON 5/8" REBAR

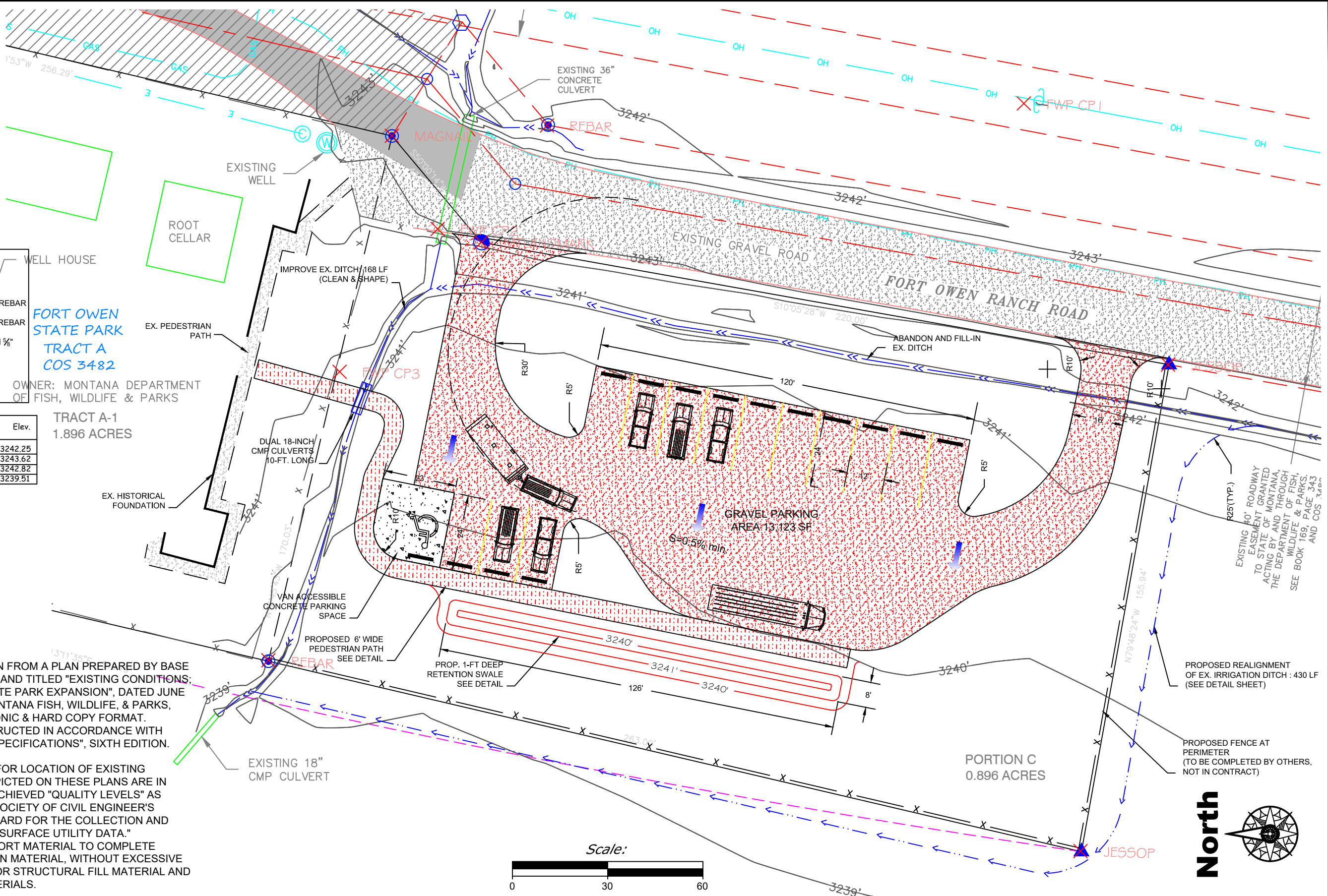
MT LANDMARK 2" ALUMINUM CAP ON 5/8" REBAR

McCARTHY 1 1/4" YELLOW PLASTIC CAP ON 5/8" REBAR

FOUND 5/8" REBAR

NO MONUMENT FOUND OR SET

Desc.	Northing	Easting	Elev.
MTLANDMARK	8715.286	10335.95	3242.25
MAGNAIL	8743.419	10369.45	3243.62
JESSOP AL CAP	8498.702	10297.38	3242.82
JESSOP AL CAP	8526.293	10143.89	3239.51



- NOTES:**
- EXISTING CONDITIONS TAKEN FROM A PLAN PREPARED BY BASE LINE SURVEYING & MAPPING AND TITLED "EXISTING CONDITIONS: PROPOSED FORT OWEN STATE PARK EXPANSION", DATED JUNE 30, 2020, PREPARED FOR MONTANA FISH, WILDLIFE, & PARKS, PROVIDED IN BOTH ELECTRONIC & HARD COPY FORMAT.
 - ALL WORK SHALL BE CONSTRUCTED IN ACCORDANCE WITH "MONTANA PUBLIC WORKS SPECIFICATIONS", SIXTH EDITION. (MPW)
 - BEFORE DIGGING, CALL 811 FOR LOCATION OF EXISTING UTILITIES. ANY UTILITIES DEPICTED ON THESE PLANS ARE IN ACCORDANCE WITH THEIR ACHIEVED "QUALITY LEVELS" AS DEFINED IN THE AMERICAN SOCIETY OF CIVIL ENGINEER'S DOCUMENT ASCE 38, "STANDARD FOR THE COLLECTION AND DEPICTION OF EXISTING SUBSURFACE UTILITY DATA."
 - ANY REQUIRED OFFSITE IMPORT MATERIAL TO COMPLETE EARTHWORK SHALL BE CLEAN MATERIAL, WITHOUT EXCESSIVE CLAY OR FINES, SUITABLE FOR STRUCTURAL FILL MATERIAL AND FREE OF DELETERIOUS MATERIALS.

**FORT OWEN STATE PARK
TRACT A
COS 3482**

OWNER: MONTANA DEPARTMENT OF FISH, WILDLIFE & PARKS

**TRACT A-1
1.896 ACRES**

**PORTION C
0.896 ACRES**

P.Jagoda 2/16/2021
DRAWN BY: DATE:
P.Jagoda 2/16/2021
CHECKED BY: DATE:

APPROVED BY: DATE:
APPROVED BY: DATE:

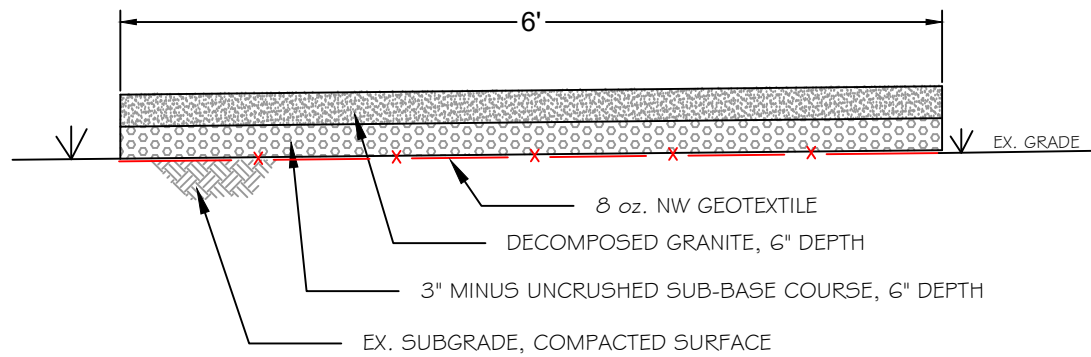
APPROVED BY: DATE:
APPROVED BY: DATE:



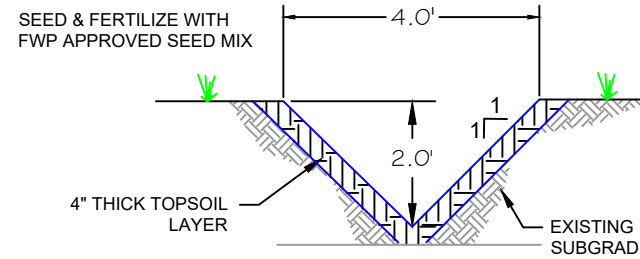
**Site Plan
Fort Owen State Park**



SHEET: 2 of 3

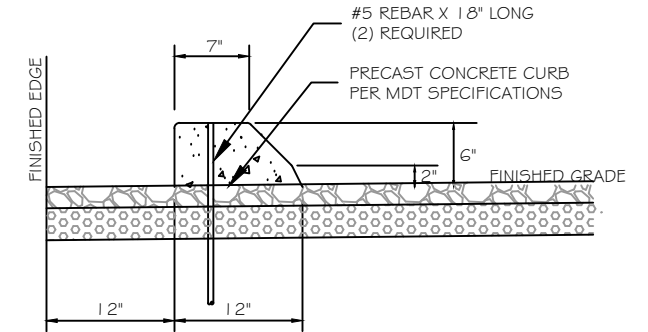


6' Wide Pedestrian Path
(Not to Scale)



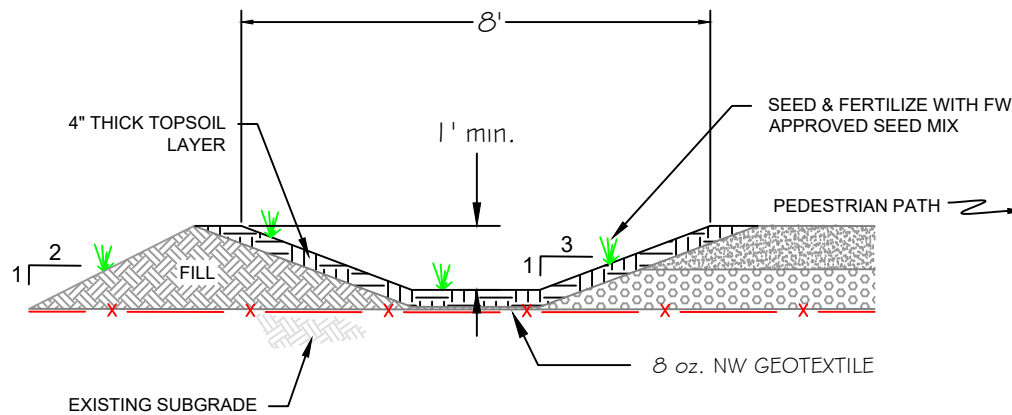
NOTES:
1. NO EXCAVATION SHALL OCCUR UNTIL APPROVAL FROM FWP AND SHPO HAS BEEN RECEIVED.
2. FWP WILL HAVE A CULTURAL MONITOR PRESENT DURING ANY EXCAVATION AT THE SITE, CONTRACTOR WILL HAVE TO COORDINATE SCHEDULE W/FWP.

IRRIGATION DITCH
(Not to Scale)

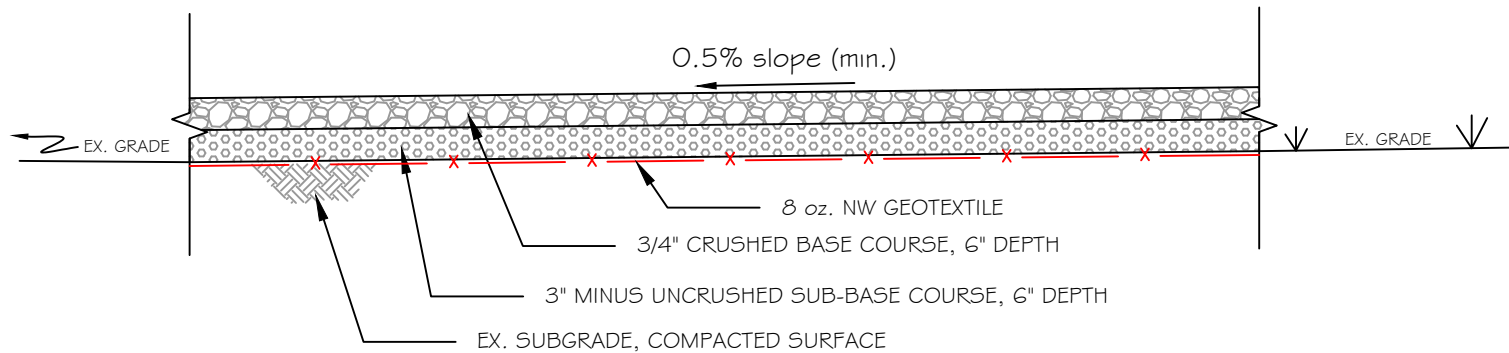


Precast Concrete Wheelstop Section
(Not to Scale)

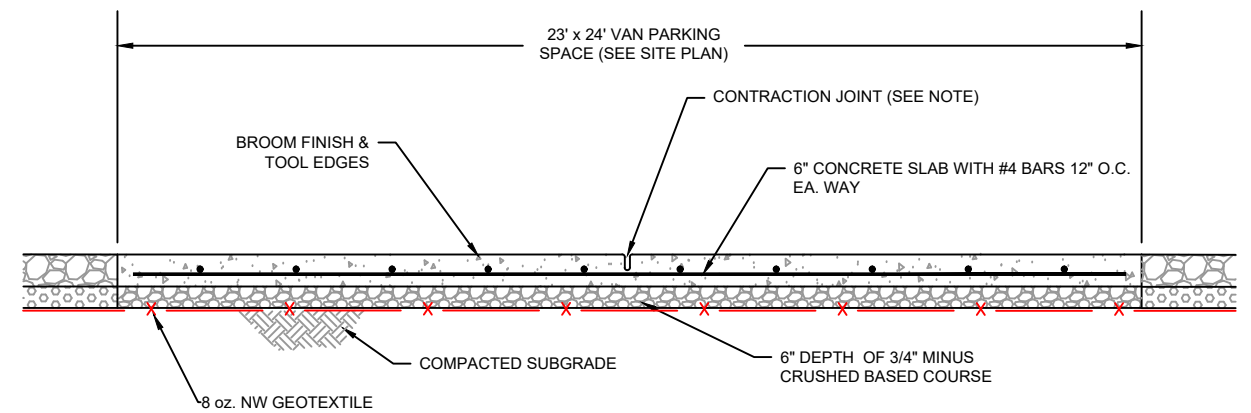
NOTES:
1. DUE TO HISTORICAL SIGNIFICANCE OF SITE, NO CLEARING/GRUBBING WILL OCCUR. GEOTEXTILE WILL BE PLACED DIRECTLY OVER EXISTING GROUND AFTER THE VEGETATION HAS BEEN MOWED. CONTRACTOR WILL BE RESPONSIBLE FOR MOWING THE GRASS PRIOR TO FABRIC PLACEMENT.
2. ANY EXCESS SOILS EXCAVATED FROM THE DITCHES THAT IS NOT USED IN CONSTRUCTING THE RETENTION SWALE OR ABLE TO BE USED ON-SITE SHALL BE THE RESPONSIBILITY OF THE CONTRACTOR AND HAULED OFF SITE.



Retention Swale Detail
NOT TO SCALE



Parking Area Section
(Not to Scale)



NOTE: SAWCUT 1/8" WIDE x 1 1/2" DEEP CONTRACTION JOINTS, SPACED AS NEEDED PER MPW SPECS.

Concrete Accessible Parking Space
(Not to Scale)

P.Jagoda 2/16/2021
DRAWN BY: DATE:
P.Jagoda 2/16/2021
CHECKED BY: DATE:

APPROVED BY: DATE:
APPROVED BY: DATE:

APPROVED BY: DATE:
APPROVED BY: DATE:



**MONTANA FISH,
WILDLIFE & PARKS**

117

Detail Sheet
Fort Owen State Park



SHEET: **3**
of **3**