

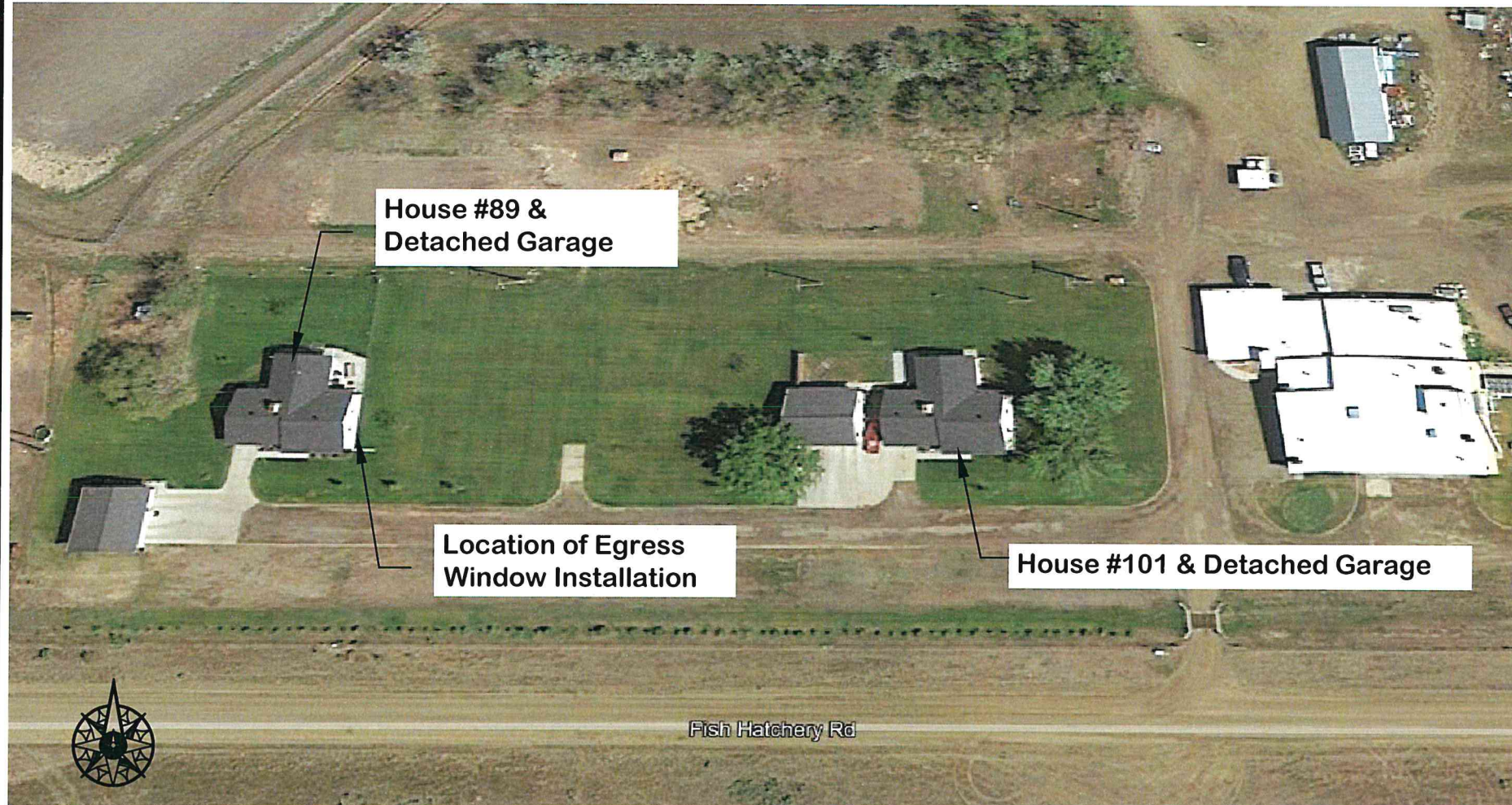
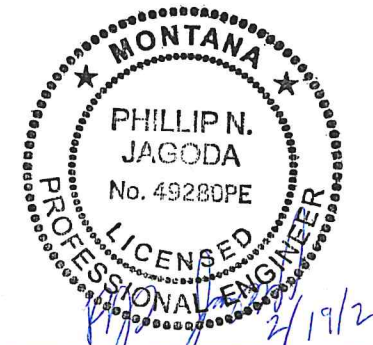
NOTES: CONTRACTOR TO REVIEW PROJECT SPECIFICATIONS FOR ALL APPLICABLE REQUIREMENTS, WHICH INCLUDE SOME OF THE FOLLOWING:

1. CONTRACTOR IS RESPONSIBLE FOR OBTAINING BUILDING PERMIT FROM THE CITY OR STATE OF MT PRIOR TO START OF WORK.
2. CONTRACTOR MUST PROTECT AC UNITS, SHRUBS, LAWN, LANDSCAPING, AND ANY OTHER STRUCTURES WHICH COULD BE DAMAGED DURING REMOVAL OF EXISTING SHINGLES.
3. REMOVAL OF NAILS MUST BE CONTROLLED AND NOT ALLOWED TO ACCUMULATE ON DRIVING SURFACES OR PARKING AREAS (GRAVEL OR PAVED).
4. IT IS THE CONTRACTOR'S RESPONSIBILITY TO CONFIRM DIMENSIONS AND LAYOUT FOR QUANTIFYING MATERIALS. SLOPE FACTOR, WASTE, AND OVERLAP IS CONSIDERED INCIDENTAL TO THE PROJECT AND WILL NOT BE PAID AS EXTRA.
5. REMOVE EXCESS MATERIALS AND DEBRIS FROM FINISHED SURFACES AND ADJACENT ROOF AREAS.
6. REMOVE ALL DEBRIS FROM THE SITE AT THE END OF THE PROJECT. DISPOSE OF DEBRIS IN SAFE AND LEGAL MANNER.
7. COVER STRUCTURAL SUBSTRATE WITH WATERPROOF SHEET MATERIAL WHEN EXPOSED OVERNIGHT OR WHEN ADVERSE WEATHER IS IMMINENT.
8. PROTECT INSTALLED PRODUCTS UNTIL COMPLETION OF PROJECT.
9. ALL DIMENSIONS, LOCATION AND SIZE OF ROOF PENETRATIONS, AND ATTIC VENTS ARE TO BE VERIFIED BY AWARDED CONTRACTOR.
10. SEE PROJECT MANUAL FOR COMPLETE SPECIFICATIONS.

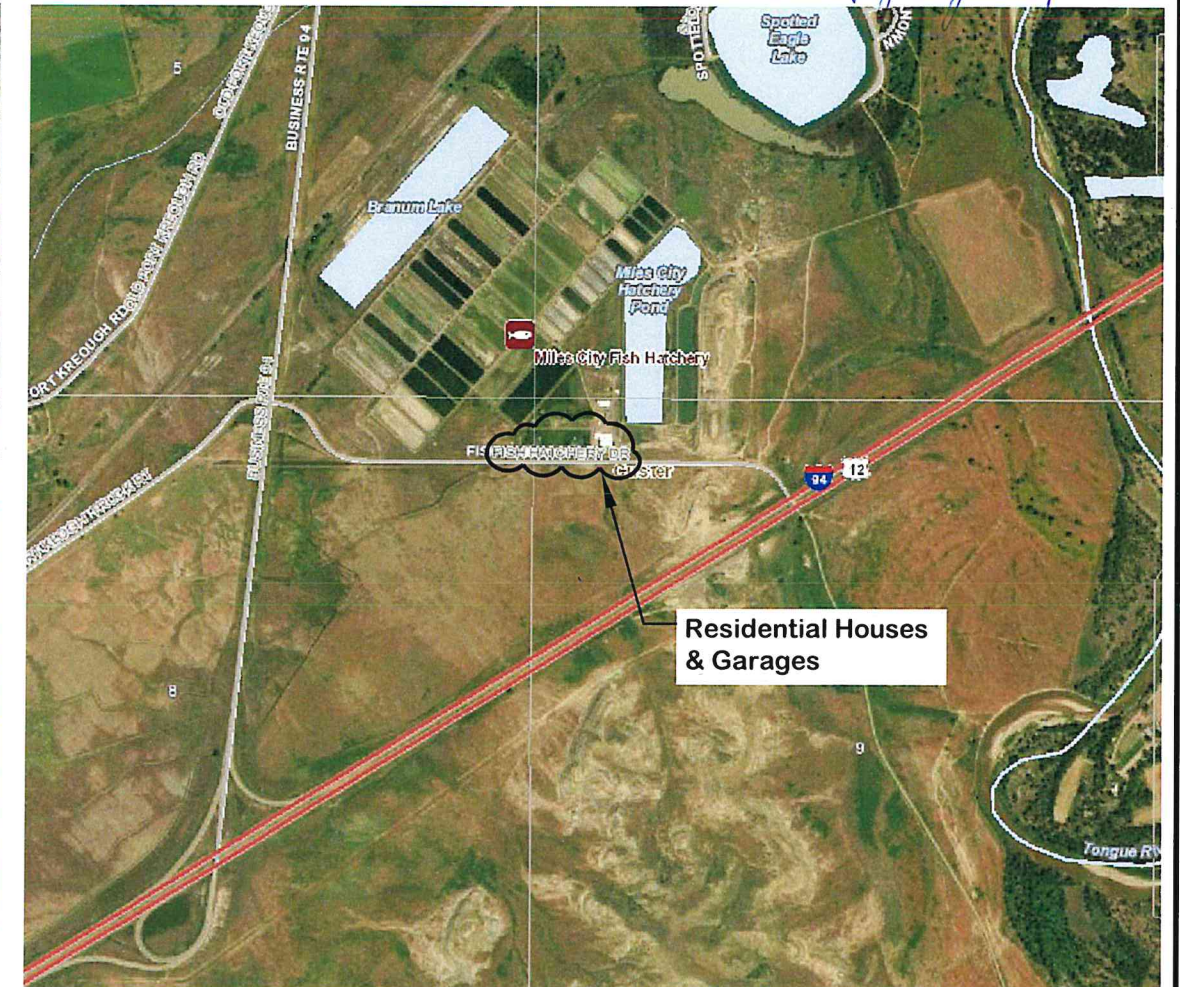
11. RESIDENTS WILL BE IN & OUT OF HOUSES DURING PROJECT WORK AND CONTRACTOR MUST PROVIDE PROTECTION FROM FALLING DEBRIS.
12. COORDINATE MATERIAL STAGING AREAS WITH FWP PERSONNEL.
13. INCIDENTALS TO PROJECT WORK INCLUDE SOME OF THE FOLLOWING: DRIP EDGE, FLASHING, PIPE JACKS, & RIDGE VENTS, SEE SPECS. FOR FULL LIST.
14. PROJECT WORK ALSO CONSISTS OF INSTALLING AN EGRESS WINDOW AT HOUSE #89, WHICH INCLUDES BUT NOT LIMITED TO REQUIRED INTERIOR FINISH & TRIM WORK, AND EXTERIOR EXCAVATION/DIGGING AS NECESSARY.
15. EGRESS WINDOW SHALL BE A JELD-WEN BRAND (OR EQUIVALENT W/APPROVAL OF OWNER) WITH DIMENSIONS OF APPROX. 24"x36".

SUBMITTALS LIST (CONTRACTOR TO PROVIDE PRIOR TO START):

1. UNDERLAYMENT (FELT, ICE & WATER BARRIER)
2. SHINGLES
3. DRIP EDGE
4. VENTED RIDGE CAPS
5. PIPE JACK FLASHING
6. EGRESS WINDOW



Site Plan  
NTS



Site Locus  
NTS

P. Jagoda DRAWN BY: DATE: 2/19/21	REVISOR BY: DATE:	APPROVED BY: DATE:
P. Jagoda CHECKED BY: DATE: 2/19/21	APPROVED BY: DATE:	APPROVED BY: DATE:



**MONTANA FISH,  
WILDLIFE & PARKS**

# Site Plan and Notes

## Miles City Fish Hatchery Reroofing Project - Rebid

SHEET: 1 of 1