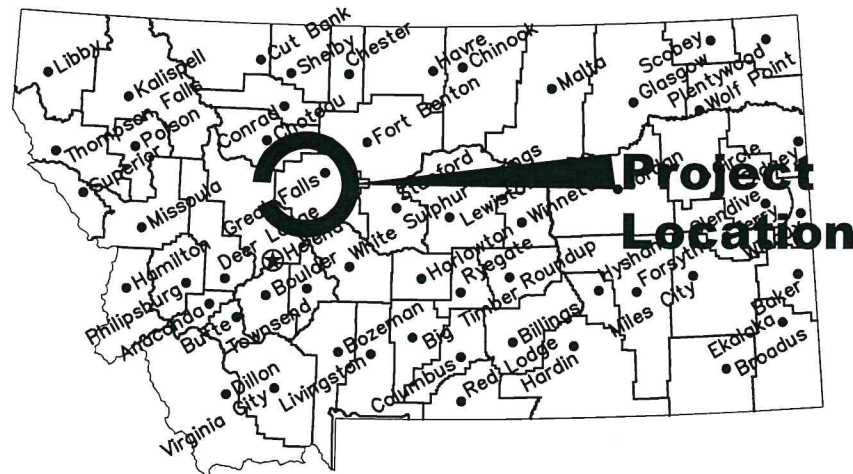


MONTANA FISH, WILDLIFE & PARKS

FIRST PEOPLES BUFFALO JUMP STATE PARK VISITORS CENTER & SHOP RE- ROOF

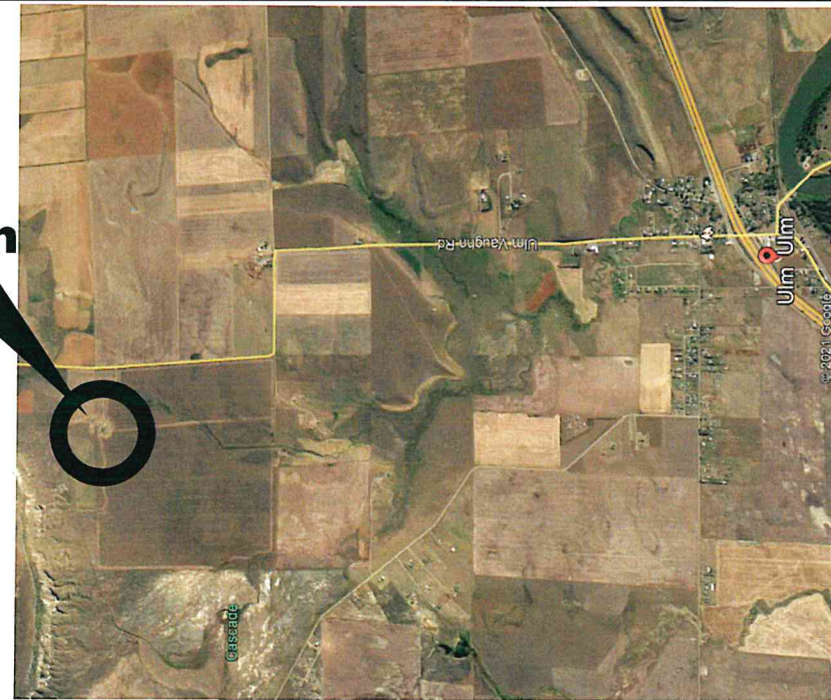
#7196136



Location Map

No Scale

**Project
Location**



Vicinity Map

No Scale

North

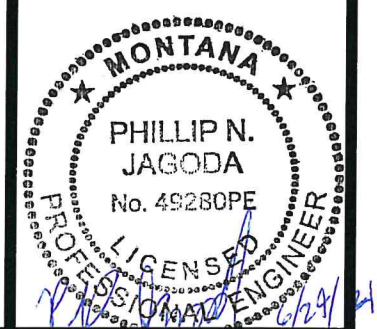


MONTANA FISH, WILDLIFE AND PARKS
DESIGN AND CONSTRUCTION

MAILING ADDRESS: PO BOX 200701
HELENA, MT 59620-0701
TEL 406.841.4000
FAX 406.841.4004
<https://fwp.mt.gov/aboutfwp/design-and-construction>

DRAWING INDEX

- 1.0 COVER SHEET
- 2.0 SITE PLAN AND NOTES



K.HARRINGTON	6/22/21
DRAWN BY:	DATE:
P.JAGODA	6/22/21
CHECKED BY:	DATE:

APPROVED BY:	DATE:
APPROVED BY:	DATE:

APPROVED BY:	DATE:
APPROVED BY:	DATE:



**MONTANA FISH,
WILDLIFE & PARKS**

COVER SHEET

FIRST PEOPLES BUFFALO JUMP STATE PARK REROOF



SHEET: 1 of 2

NOTES: CONTRACTOR TO REVIEW PROJECT SPECIFICATIONS FOR ALL APPLICABLE REQUIREMENTS, WHICH INCLUDE SOME OF THE FOLLOWING:

1. CONTRACTOR IS RESPONSIBLE FOR OBTAINING BUILDING PERMIT FROM CITY OR STATE OF MONTANA PRIOR TO START OF WORK.
2. CONTRACTOR MUST PROTECT AC UNITS, SHRUBS, LAWN, LANDSCAPING AND OTHER STRUCTURES FROM DAMAGE DURING REMOVAL OF EXISTING SHINGLES.
3. REMOVAL OF NAILS MUST BE CONTROLLED AND NOT ALLOWED ACCUMULATE ON DRIVING SURFACES OR PARKING AREAS (GRAVEL OR PAVED).
4. IT IS THE CONTRACTORS RESPONSIBILITY TO CONFIRM DIMENSIONS AND LAYOUT FOR QUANTIFYING MATERIALS, SLOPE FACTOR, WASTE, AND OVERLAP IS CONSIDERED INCIDENTAL TO THE PROJECT AND WILL NOT BE PAID AS EXTRA.
5. REMOVE EXCESS MATERIALS AND DEBRIS FROM FINISHED SURFACES AND ADJACENT ROOF AREAS.
6. REMOVE ALL DEBRIS FROM THE SITE AT THE END OF THE PROJECT. DISPOSE OF IN A SAFE AND LEGAL MANNER.
7. COVER STRUCTURAL SUBSTRATE WITH A WATER PROOF SHEET MATERIAL WHEN EXPOSED OVERNIGHT OR WHEN WEATHER IS IMMINENT.
8. PROTECT INSTALLED PRODUCTS UNTIL COMPLETION OF PROJECT.
9. ALL DIMENSIONS, LOCATIONS AND SIZE OF ROOF PENETRATIONS, AND ATTIC VENTS ARE TO BE VERIFIED BY AWARDED CONTRACTOR.
10. SEE PROJECT MANUAL FOR COMPLETE SPECIFICATIONS.
11. PUBLIC WILL BE PRESENT DURING THE PROJECT, CONTRACTOR MUST PROTECT FOR ANY FALLING DEBRIS.
12. COORDINATE MATERIAL STAGING WITH FWP PERSONNEL.
13. INCIDENTALS TO PROJECT WORK INCLUDE SOME OF THE FOLLOWING: DRIP EDGE, PIPE JACKS, FLASHING, RIDGE VENT, POWER ATTIC VENT COVER DETACH AND RESET.

SEE SPECS FOR FULL LIST.

SUBMITTALS LIST (CONTRACTOR TO PROVIDE PRIOR TO START)

1. UNDERLAYMENT (FELT, ICE & WATER BARRIER)
2. SHINGLES
3. DRIP EDGE
4. PIPE JACK FLASHING



NOT TO SCALE



NOT TO SCALE

K.HARRINGTON	6/22/21
DRAWN BY:	DATE:
P.JAGODA	?
CHECKED BY:	DATE:

REVISIED BY:	DATE:
APPROVED BY:	DATE:

APPROVED BY:	DATE:
APPROVED BY:	DATE:



**MONTANA FISH,
WILDLIFE & PARKS**

SITE PLAN AND NOTES

FIRST PEOPLES BUFFALO JUMP STATE PARK REROOF

