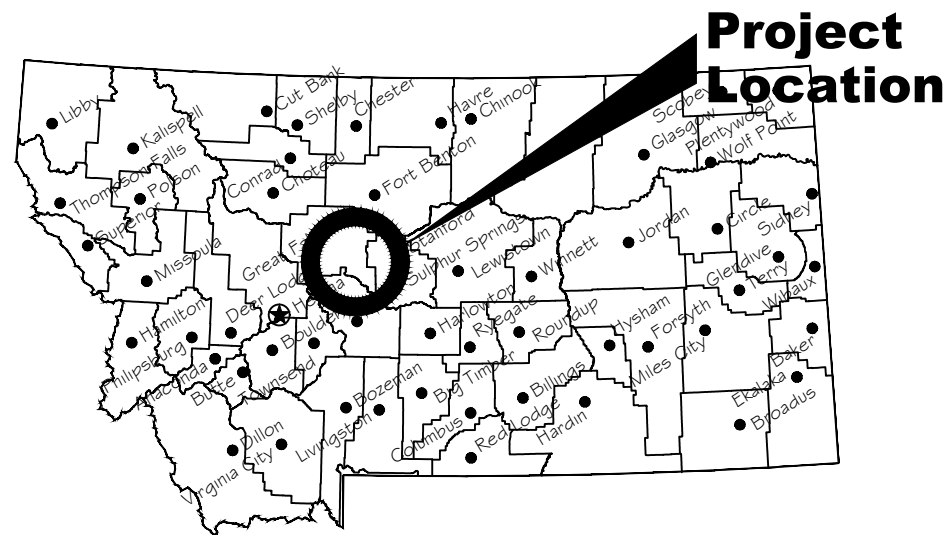


PROPOSED PARKING IMPROVEMENTS AND KIOSK AT THE SLUICE BOXES STATE PARK UPPER TRAILHEAD

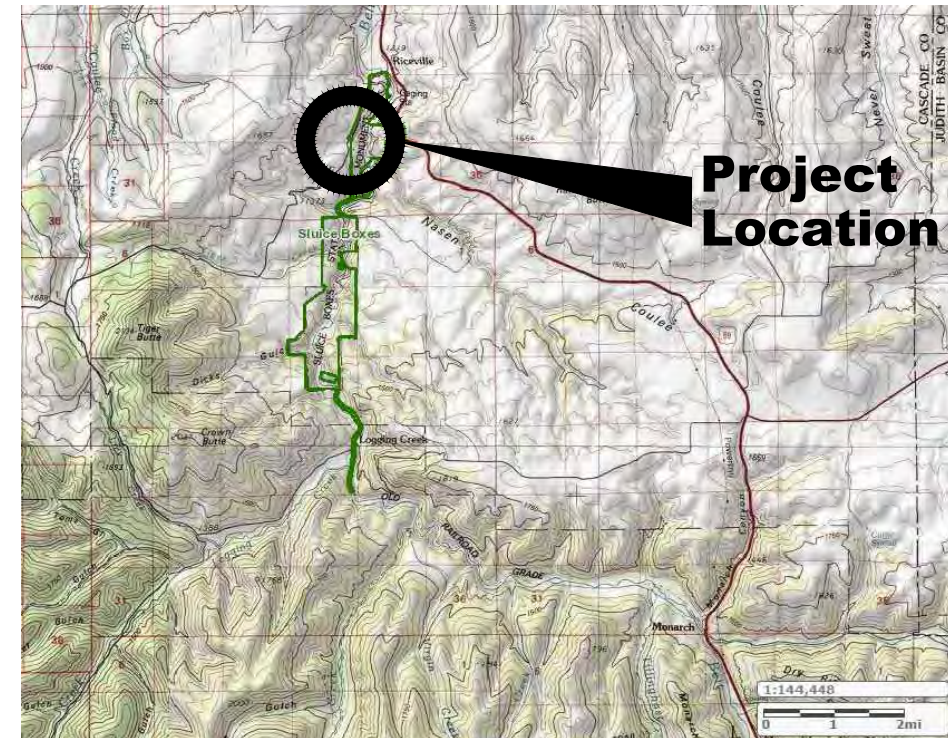
NEAR RICEVILLE, MT

FWP #20-13



Location Map

No Scale



Vicinity Map

No Scale

North



MONTANA FISH, WILDLIFE AND PARKS
DESIGN AND CONSTRUCTION

MAILING ADDRESS:

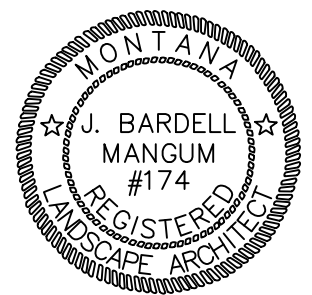
PO BOX 200701
HELENA, MT 59620-0701
TEL 406.841.4000
FAX 406.841.4004
fwp.mt.gov/Doing Business/Design#Construction

PHYSICAL ADDRESS:

1522 9th AVENUE
HELENA, MT 59601

DRAWING INDEX

- 1 COVER SHEET
- 2 SITE PLAN
- 3 SITE DETAILS
- 4 KIOSK ELEVATIONS - ADDITIVE ALTERNATE #1
- 5 KIOSK DETAILS - ADDITIVE ALTERNATE #1



B. Mangum 12/3/2020

DRAWN BY: DATE:

APPROVED BY: DATE:

APPROVED BY: DATE:

CHECKED BY: DATE:

APPROVED BY: DATE:

APPROVED BY: DATE:



**MONTANA FISH,
WILDLIFE & PARKS**

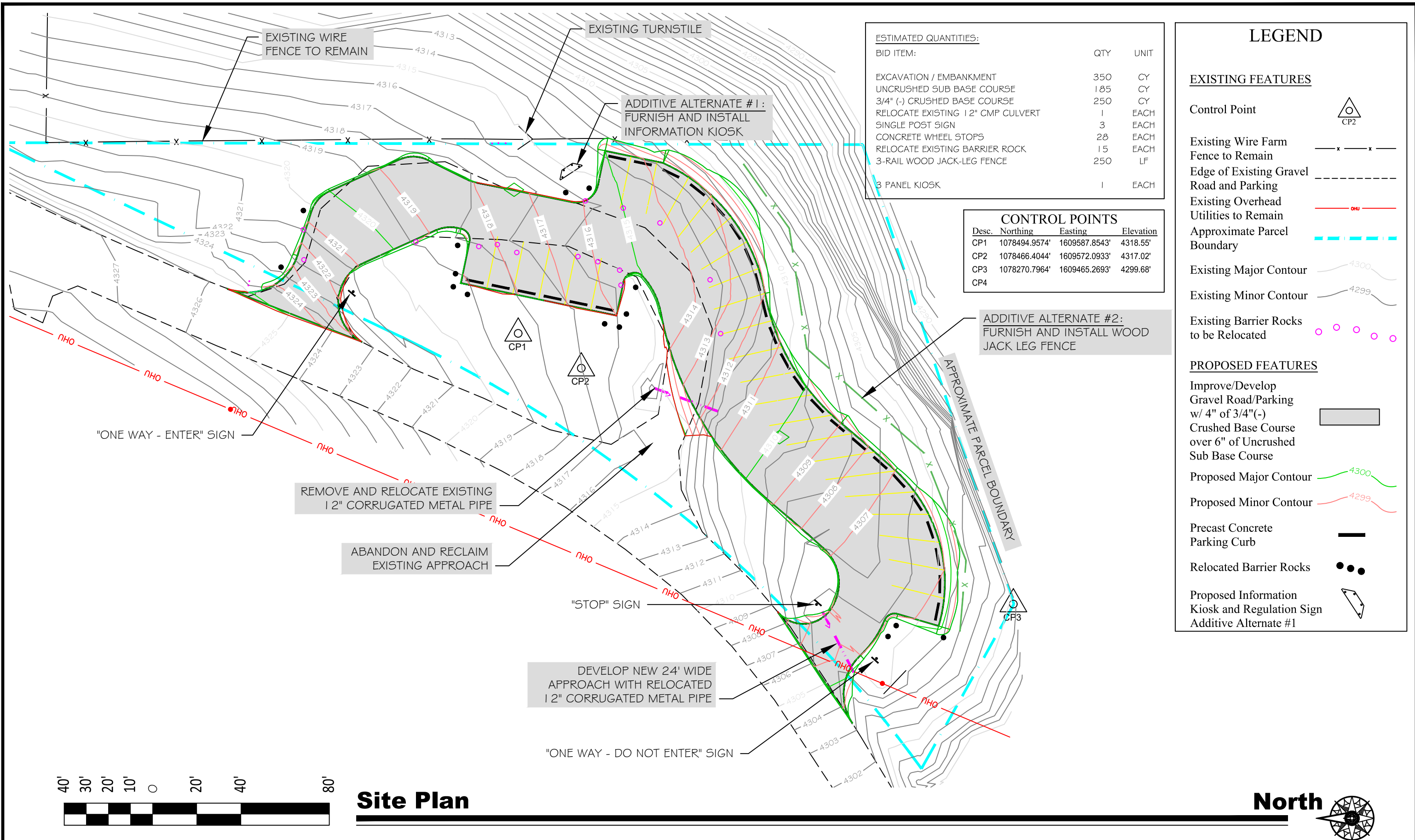
124

Cover Sheet

Sluice Boxes State Park Upper Trailhead



SHEET: 1 of 5



ESTIMATED QUANTITIES:

BID ITEM:	QTY	UNIT
EXCAVATION / EMBANKMENT	350	CY
UNCRUSHED SUB BASE COURSE	185	CY
3/4" (-) CRUSHED BASE COURSE	250	CY
RELOCATE EXISTING 12" CMP CULVERT	1	EACH
SINGLE POST SIGN	3	EACH
CONCRETE WHEEL STOPS	28	EACH
RELOCATE EXISTING BARRIER ROCK	15	EACH
3-RAIL WOOD JACK-LEG FENCE	250	LF
3 PANEL KIOSK	1	EACH

CONTROL POINTS

Desc.	Northing	Easting	Elevation
CP1	1078494.9574'	1609587.8543'	4318.55'
CP2	1078466.4044'	1609572.0933'	4317.02'
CP3	1078270.7964'	1609465.2693'	4299.68'
CP4			

LEGEND

EXISTING FEATURES

- Control Point:
- Existing Wire Farm Fence to Remain:
- Edge of Existing Gravel Road and Parking:
- Existing Overhead Utilities to Remain:
- Approximate Parcel Boundary:
- Existing Major Contour:
- Existing Minor Contour:
- Existing Barrier Rocks to be Relocated:

PROPOSED FEATURES

- Improve/Develop Gravel Road/Parking w/ 4" of 3/4"(-) Crushed Base Course over 6" of Uncrushed Sub Base Course:
- Proposed Major Contour:
- Proposed Minor Contour:
- Precast Concrete Parking Curb:
- Relocated Barrier Rocks:
- Proposed Information Kiosk and Regulation Sign Additive Alternate #1:



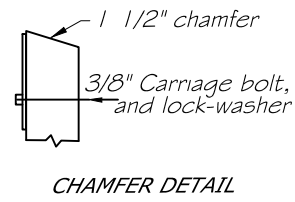
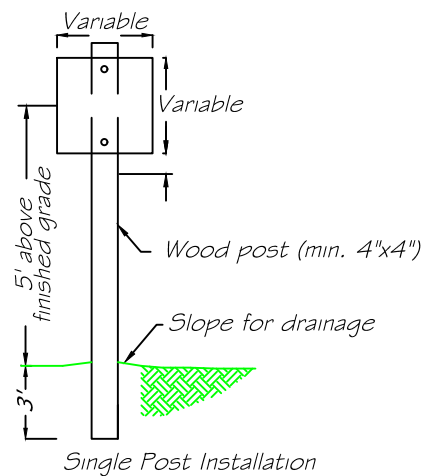
Site Plan



B. Mangum	12/3/2020		
DRAWN BY:	DATE:	APPROVED BY:	DATE:
CHECKED BY:	DATE:	APPROVED BY:	DATE:



Site Plan
Sluice Boxes State Park Upper Trailhead

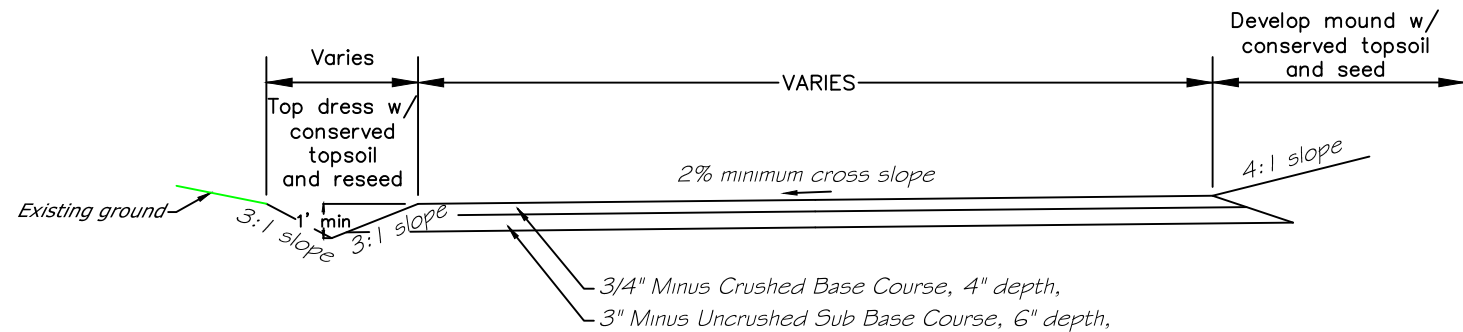


SIGN POST MOUNTING DETAIL

(Not to Scale)

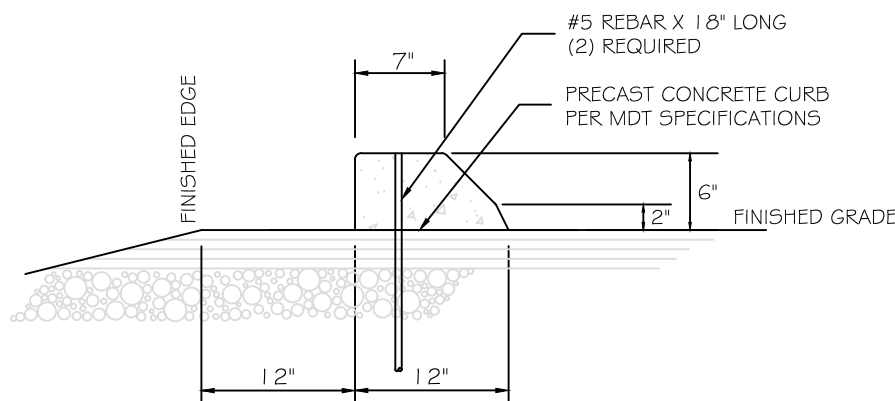
NOTES:

1. Use pressure treated timbers for all sign posts.
2. Coat all posts with preservative for all drilled holes and cut surfaces.
3. Use cadmium plated or galvanized steel for all bolts, nuts & washers.
4. Place bolts to not interfere with sign lettering. Paint bolt heads to match sign.
5. Center single post panels to post, overhang panels 3" beyond posts for double post installations. Extend all posts 3" above sign panels.



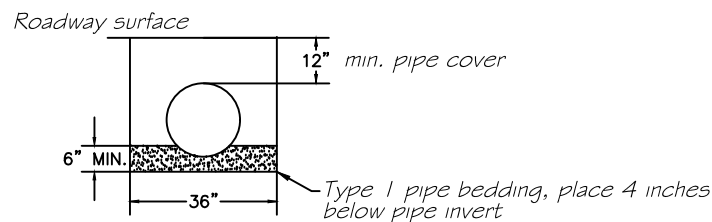
TYPICAL GRAVEL ROAD / PARKING SECTION

(Not to Scale)



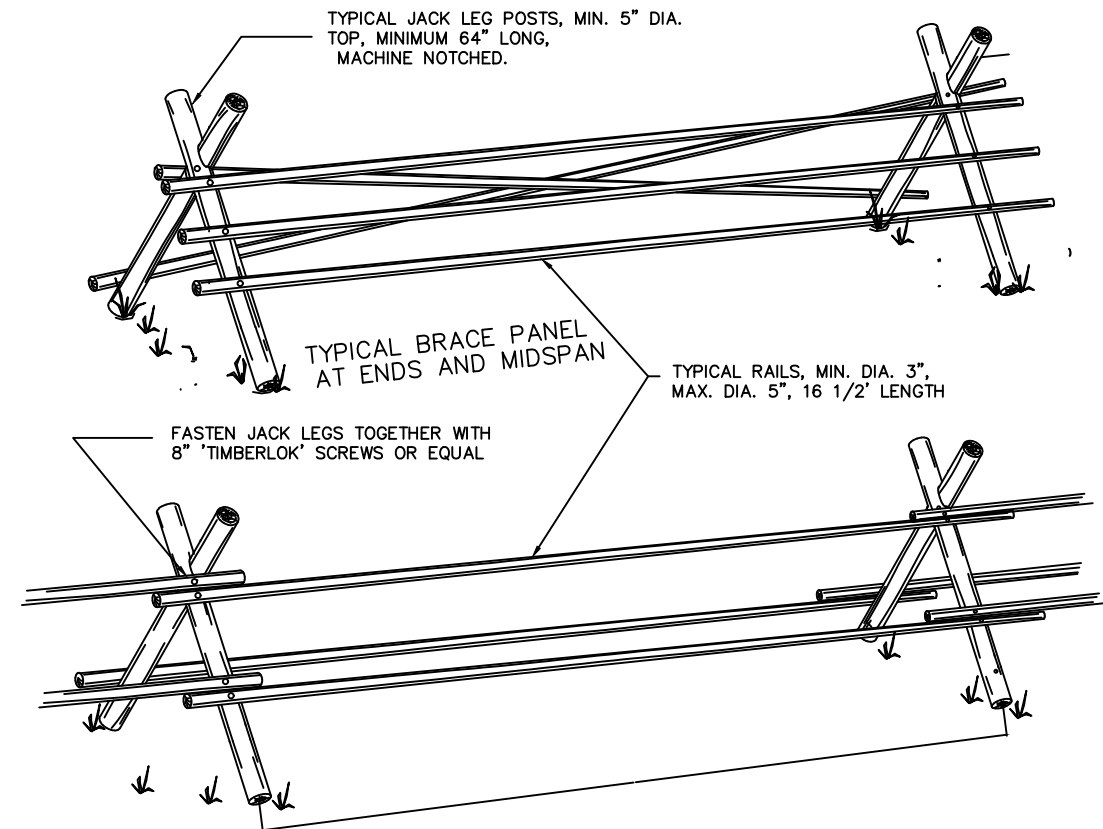
PRECAST CONCRETE WHEEL STOP DETAIL

(Not to Scale)



CULVERT BEDDING DETAIL

(Not to Scale)



JACK-LEG FENCE DETAIL - ADDITIVE ALTERNATE #2

(Not to Scale)

B. Mangum 12/3/2020
 DRAWN BY: DATE:
 CHECKED BY: DATE:

APPROVED BY: DATE:
 APPROVED BY: DATE:

APPROVED BY: DATE:
 APPROVED BY: DATE:



**MONTANA FISH,
 WILDLIFE & PARKS**

126

Site Details

Sluice Boxes State Park Upper Trailhead



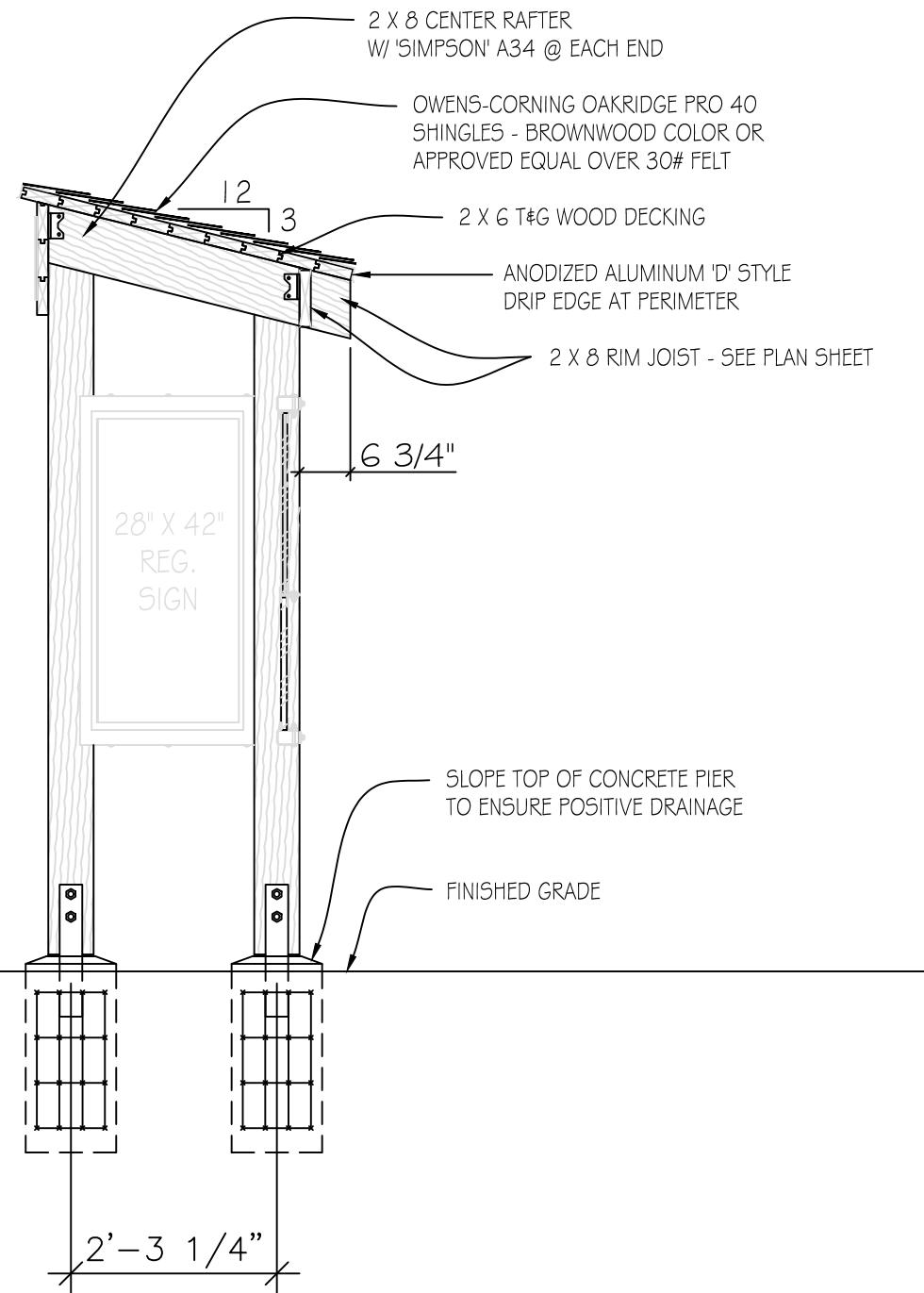
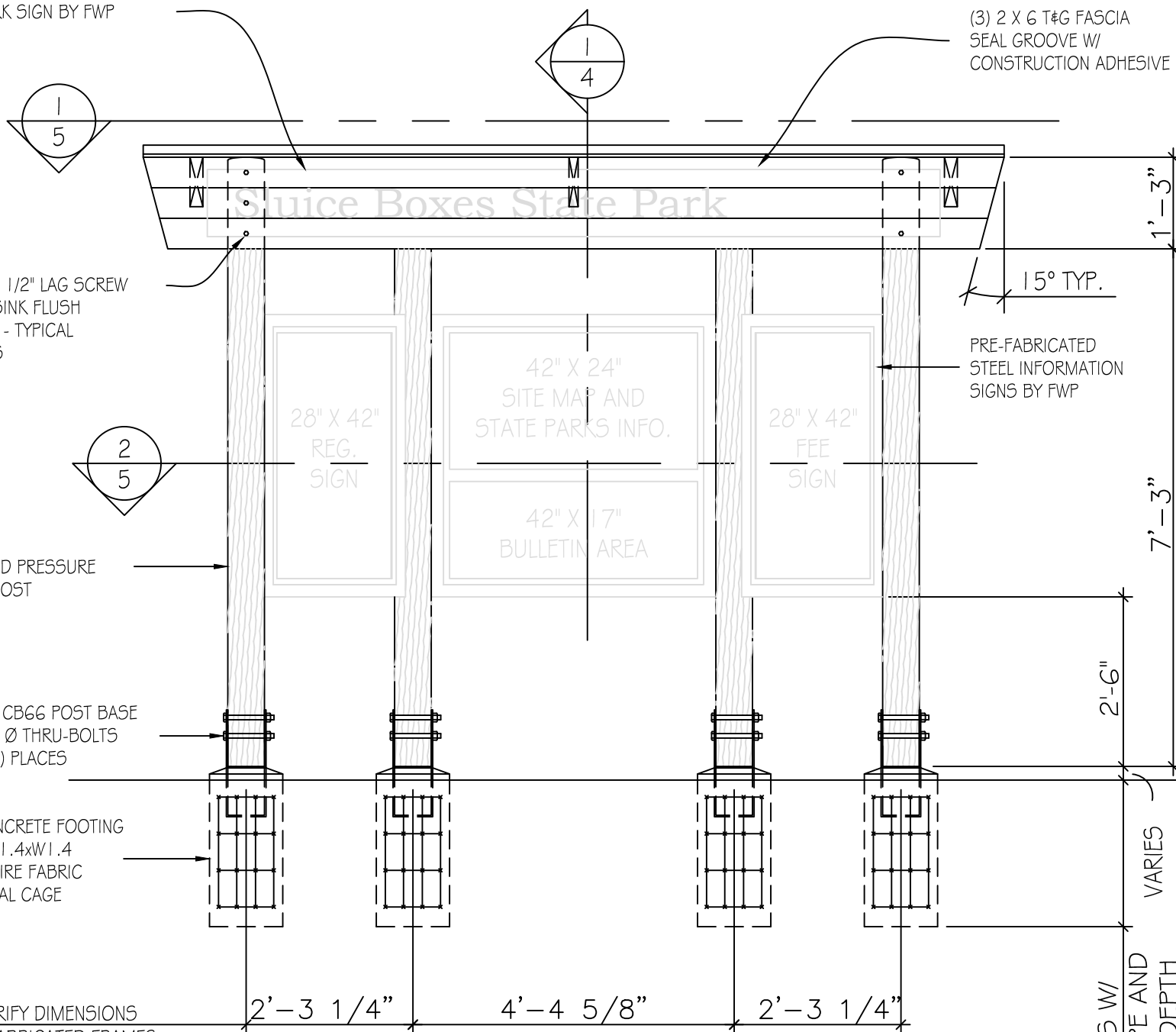
SHEET: 3 of 5

STATE PARK SIGN BY FWP

(3) 2 X 6 T&G FASCIA
SEAL GROOVE W/
CONSTRUCTION ADHESIVE

2 X 8 CENTER RAFTER
W/ 'SIMPSON' A34 @ EACH END

OWENS-CORNING OAKRIDGE PRO 40
SHINGLES - BROWNWOOD COLOR OR
APPROVED EQUAL OVER 30# FELT



3/8" Ø X 4 1/2" LAG SCREW
COUNTERSINK FLUSH
W/ FASCIA - TYPICAL
(6) PLACES

6" Ø MILLED PRESSURE
TREATED POST

'SIMPSON' CB66 POST BASE
W/ (2) 5/8" Ø THRU-BOLTS
TYPICAL (4) PLACES

12" Ø CONCRETE FOOTING
W/ 6"x6"W 1.4xW 1.4
WELDED WIRE FABRIC
CYLINDRICAL CAGE

FIELD VERIFY DIMENSIONS
W/ PRE-FABRICATED FRAMES
PRIOR TO CONSTRUCTION

PRE-FABRICATED
STEEL INFORMATION
SIGNS BY FWP

SLOPE TOP OF CONCRETE PIER
TO ENSURE POSITIVE DRAINAGE

FINISHED GRADE

FRONT ELEVATION

SCALE: NONE

A
4

SECTION THRU KIOSK

SCALE: NONE

1
4

B. Mangum	12/3/2020
DRAWN BY:	DATE:
CHECKED BY:	DATE:

APPROVED BY:	DATE:
APPROVED BY:	DATE:

APPROVED BY:	DATE:
APPROVED BY:	DATE:



**MONTANA FISH,
WILDLIFE & PARKS**

127

Kiosk Elevations - Add. Alt. #1

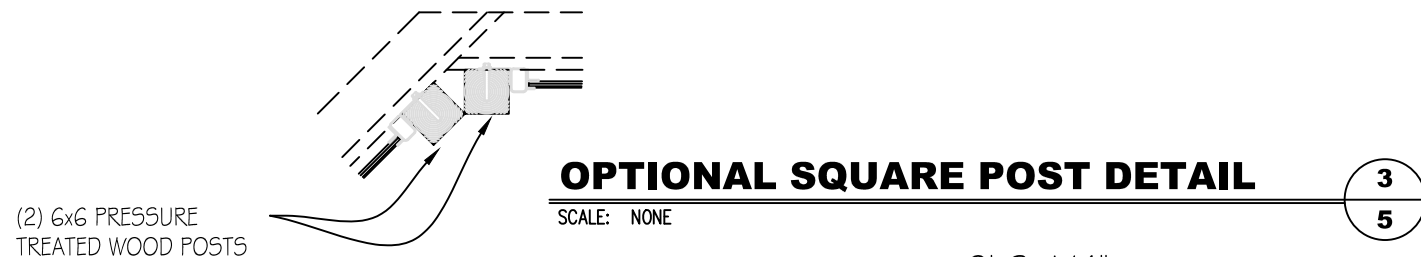
Sluice Boxes State Park Upper Trailhead



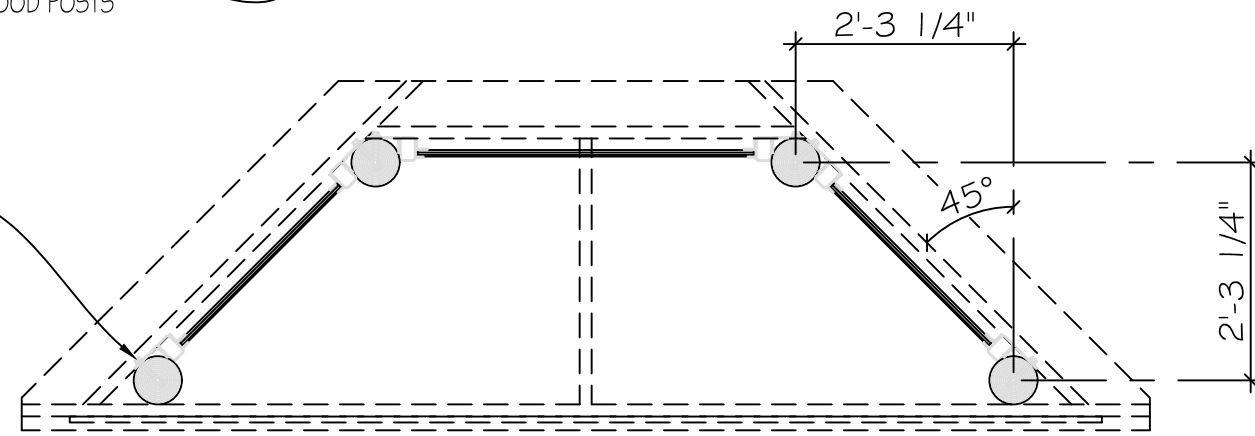
SHEET: 4
of 5

MATERIALS SCHEDULE		
QTY.	UNIT	MATERIAL
LUMBER & ROOFING		
4	EACH	6" Ø X 10' MILLED PRESSURE TREATED PINE/FIR/LARCH POSTS
6	EACH	2 X 6 X 12' TONGUE AND GROOVE #1 DF/PINE DECKING
3	EACH	2 X 6 X 10' TONGUE AND GROOVE #1 DF/PINE DECKING
3	EACH	2 X 6 X 8' TONGUE AND GROOVE #1 DF/PINE DECKING
2	EACH	2 X 8 X 10' #1 DF/PINE
35	S.F.	30# ROOFING FELT
2	BUNDLE	OWENS-CORNING OAKRIDGE PRO 40 SHINGLES - BROWNWOOD COLOR
30	L.F.	BROWN ANODIZED ALUMINUM D STYLE DRIP EDGE
MISCELLANEOUS HARDWARE		
4	EACH	'SIMPSON' CB66 GALVANIZED STEEL POST BASE
8	EACH	5/8" Ø X 6 1/2" A307 MACHINE BOLTS W/ NUT AND WASHER (POST BASE TO POST)
18	EACH	3/8" Ø X 4 1/2" LAG SCREW W/ WASHER (ROOF ASSEMBLY AND FASCIA TO POST)
12	EACH	1/2" Ø X 3 1/2" LAG SCREW W/ WASHER (METAL SIGN FRAME TO POST)
4	EACH	'SIMPSON' A34 FRAMING ANCHOR
AS REQD		1 6d GALVANIZED BOX NAILS
AS REQD		1 1/4 GALVANIZED ROOFING NAILS

NOTE:
MATERIAL SCHEDULE QUANTITIES PROVIDED FOR CONVENIENCE ONLY.
VERIFY QUANTITIES PRIOR TO BIDDING, ORDERING OR CONSTRUCTION.

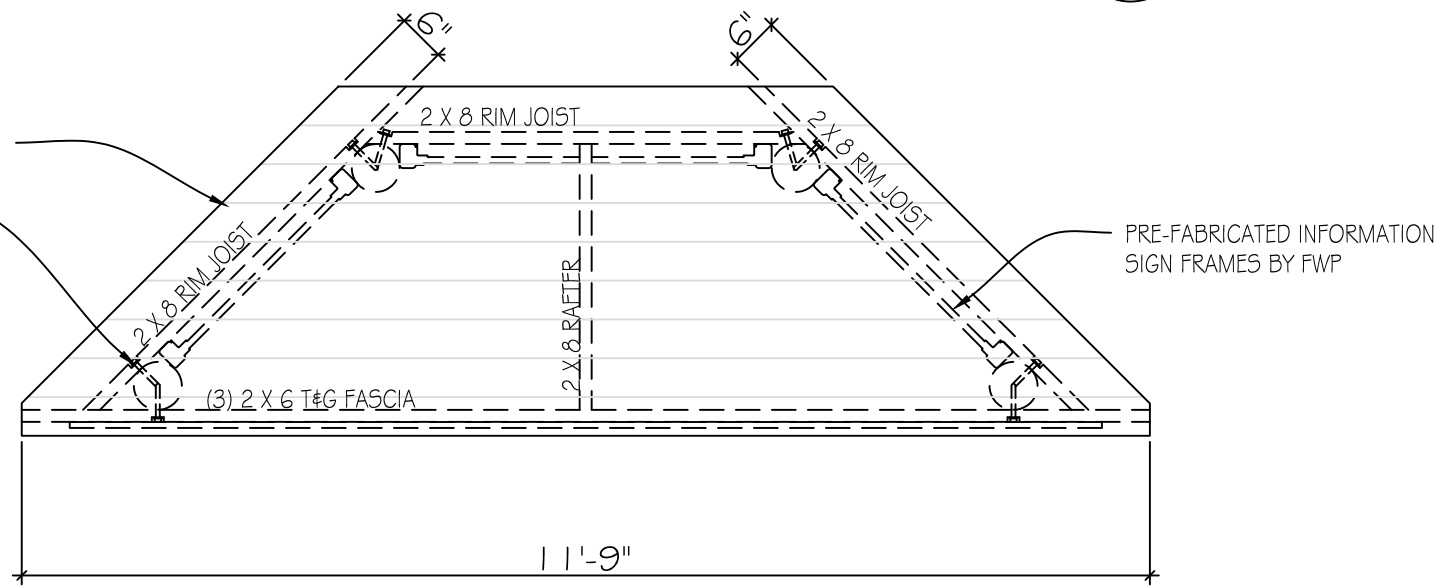


(4) 1/2" X 3 1/2"
LAG SCREWS
PER FRAME
TYPICAL (3)
FRAMES



DECKING - SEE SECTION

(2) 3/8" X 4 1/2"
LAG SCREWS
TYPICAL (6)
PLACES



B. Mangum 12/3/2020
DRAWN BY: DATE:
CHECKED BY: DATE:

APPROVED BY: DATE:
APPROVED BY: DATE:

APPROVED BY: DATE:
APPROVED BY: DATE:



**MONTANA FISH,
WILDLIFE & PARKS**

128

Kiosk Details - Add. Alt. #1
Sluice Boxes State Park Upper Trailhead



SHEET:
5
of
5