

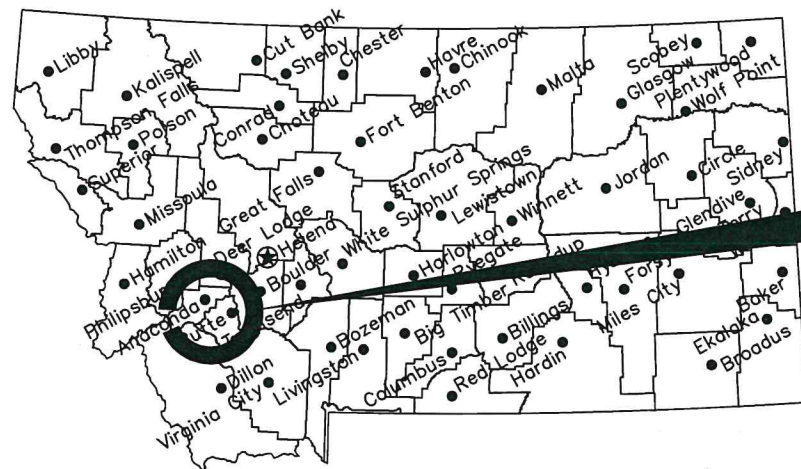
MONTANA FISH, WILDLIFE & PARKS

Anaconda Smoke Stack State Park

Parking Lot Improvements

Anaconda-Deerlodge County

#7216301

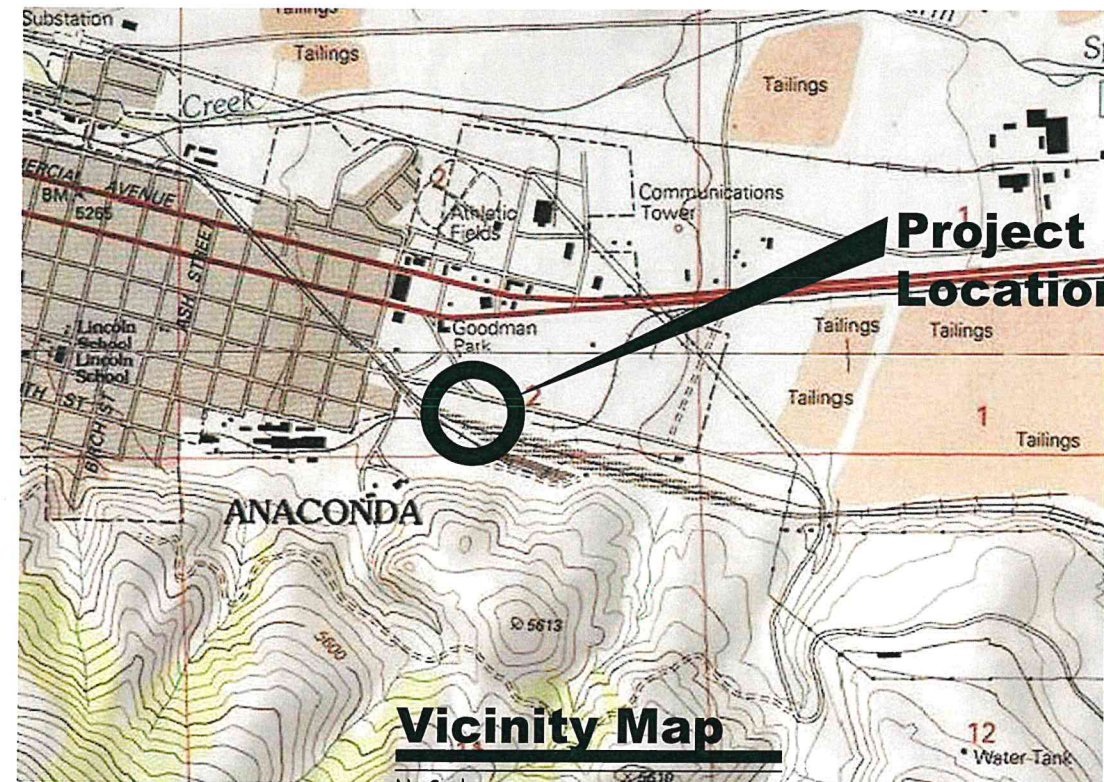


Location Map

No Scale

Project Location

North



Vicinity Map

No Scale

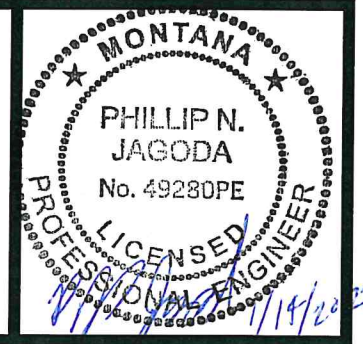
MONTANA FISH, WILDLIFE AND PARKS
DESIGN AND CONSTRUCTION

MAILING ADDRESS: PO BOX 200701
HELENA, MT 59620-0701
TEL 406.841.4000
FAX 406.841.4004
<https://fwp.mt.gov/aboutfwp/design-and-construction>

PHYSICAL ADDRESS: 1522 9th AVENUE
HELENA, MT 59601

DRAWING INDEX

- 1.0 Cover sheet
- 2.0 Asphalt removal plan
- 3.0 site plan new Lot layout
- 4.0 Notes and details



K. Harrington
DRAWN BY: DATE: 12/7/21

APPROVED BY: DATE:

APPROVED BY: DATE:



MONTANA FISH,
WILDLIFE & PARKS

124

Cover Sheet

Anaconda Smoke Stack State Park Parking Improvements



SHEET: 1 of 4

CONSTRUCTION NOTES:

1. ALL WORK SHALL BE CONSTRUCTED IN ACCORDANCE WITH "MONTANA PUBLIC WORKS SPECIFICATIONS", SIXTH EDITION (MPW).
2. BEFORE DIGGING, CALL 811 FOR LOCATION OF EXISTING UTILITIES. THE LOCATION OF UTILITIES SHOWN ON THE DRAWINGS ARE APPROXIMATE AND WERE DERIVED PRIMARILY FROM AS-BUILT DRAWINGS. THE CONTRACTOR SHALL BE RESPONSIBLE FOR THE LOCATION OF PRIVATE UTILITIES WITHIN THE PROJECT AREA, NOT LOCATED BY UTILITY COMPANIES.
3. ALL EXCAVATION AND EMBANKMENT ON THIS PROJECT, SHALL MEET THE REQUIREMENTS OF MPW SPECIFICATION 02/230 STREET EXCAVATION, BACKFILL AND COMPACTION.
4. ALL COMPACTION TESTING REQUIRED BY MPW SHALL BE PROVIDED BY AND INDEPENDENT TESTING FIRM AT THE EXPENSE OF THE CONTRACTOR.
5. CRUSHED TOP SURFACING FOR GRAVEL SURFACING SHALL MEET THE FOLLOWING SPECIFICATIONS INCLUDING BINDER OR BLENDING MATERIAL:

SIEVE SIZE	% PASSING
3/4" SIEVE	100%
No. 4 SIEVE	40-80%
No. 10 SIEVE	25-60%
No. 200 SIEVE	8-20%

IN ADDITION, THE PORTION PASSING THE NO. 200 SIEVE CANNOT EXCEED 2/3 OF THE PORTION PASSING THE #40 SIEVE; THE MAXIMUM LIQUID LIMIT FOR THE MATERIAL PASSING THE NO. 40 SIEVE SHALL NOT EXCEED 35, WHILE THE PLASTICITY INDEX CAN VARY BETWEEN 3 AND 10; THE WEAR FACTOR SHALL NOT EXCEED 50% AT 500 REVOLUTIONS; AND AT LEAST 20% OF THE AGGREGATE RETAINED ON NO. 4 SIEVE SHALL HAVE A FRACTURED FACE.
6. IMPORT MATERIAL REQUIRED TO COMPLETE EARTHWORK SHALL BE IMPORTED FROM OFF-SITE AND SHALL BE CLEAN MATERIAL SUITABLE FOR FILL MATERIAL. EXCESS EXCAVATION MATERIALS SHALL BE DISPOSED OF BY THE CONTRACTOR IN A LOCATION APPROVED BY THE OWNER.
7. WHERE SHALLOW FILL INTERSECTS EXISTING TREES, CARE WILL BE TAKEN NOT TO DAMAGE THE TREE, USE HAND WORK AS NEEDED TO PROTECT THE TREE FROM DAMAGE.



K. Harrington 11/2/21
 DRAWN BY: DATE:

REVISED BY: DATE:
 APPROVED BY: DATE:

APPROVED BY: DATE:
 APPROVED BY: DATE:



**MONTANA FISH,
 WILDLIFE & PARKS**

Asphalt removal plan
 Anaconda Smoke Stack State Park Parking Improvements



SHEET: 2 of 4



K. Harrington 11/2/21
 DRAWN BY: DATE:
 CHECKED BY: DATE:

REVISED BY: DATE:
 APPROVED BY: DATE:

APPROVED BY: DATE:
 APPROVED BY: DATE:



**MONTANA FISH,
 WILDLIFE & PARKS**

126

NEW PARKING LAYOUT
 Anaconda Smoke Stack State Park Parking Improvements

SHEET: 3 of 4

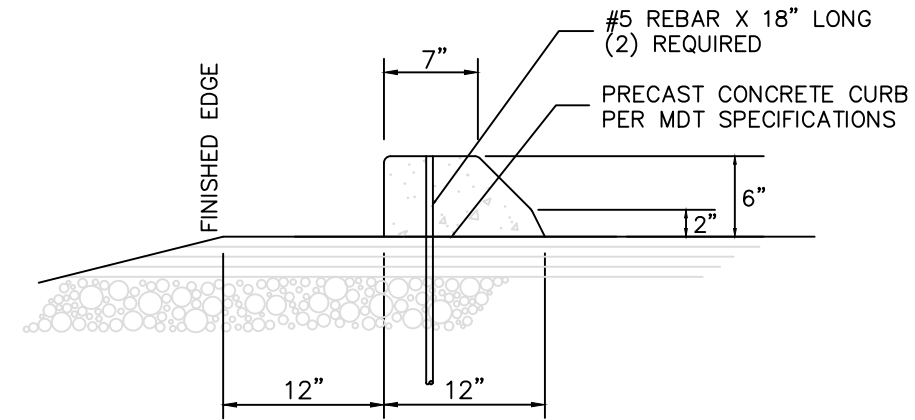
CONSTRUCTION NOTES:

- ALL WORK SHALL BE CONSTRUCTED IN ACCORDANCE WITH "MONTANA PUBLIC WORKS SPECIFICATIONS", SIXTH EDITION (MPW).
- BEFORE DIGGING, CALL 811 FOR LOCATION OF EXISTING UTILITIES. THE LOCATION OF UTILITIES SHOWN ON THE DRAWINGS ARE APPROXIMATE AND WERE DERIVED PRIMARILY FROM AS-BUILT DRAWINGS. THE CONTRACTOR SHALL BE RESPONSIBLE FOR THE LOCATION OF PRIVATE UTILITIES WITHIN THE PROJECT AREA, NOT LOCATED BY UTILITY COMPANIES.
- ALL EXCAVATION AND EMBANKMENT ON THIS PROJECT, SHALL MEET THE REQUIREMENTS OF MPW SPECIFICATION 02/230 STREET EXCAVATION, BACKFILL AND COMPACTION.
- ALL COMPACTION TESTING REQUIRED BY MPW SHALL BE PROVIDED BY AND INDEPENDENT TESTING FIRM AT THE EXPENSE OF THE CONTRACTOR.
- CRUSHED TOP SURFACING FOR GRAVEL SURFACING SHALL MEET THE FOLLOWING SPECIFICATIONS INCLUDING BINDER OR BLENDING MATERIAL:

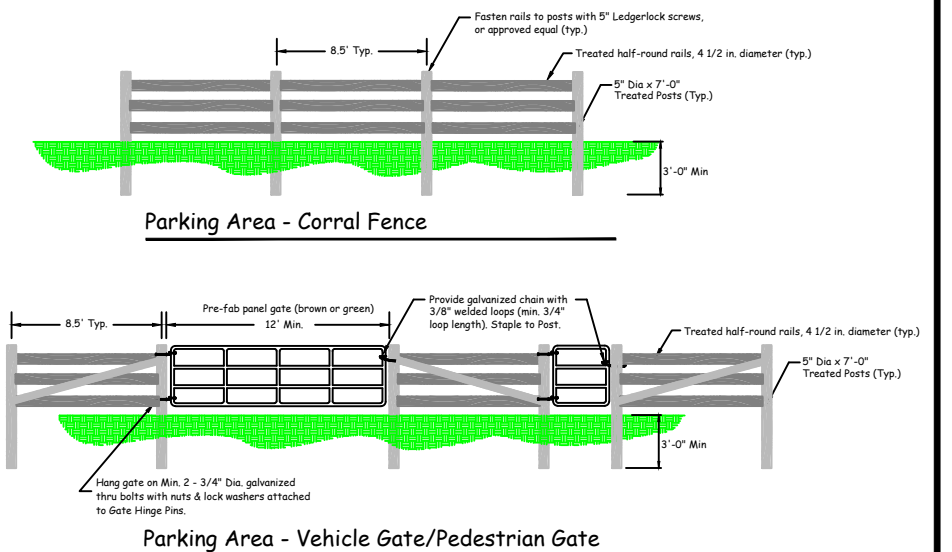
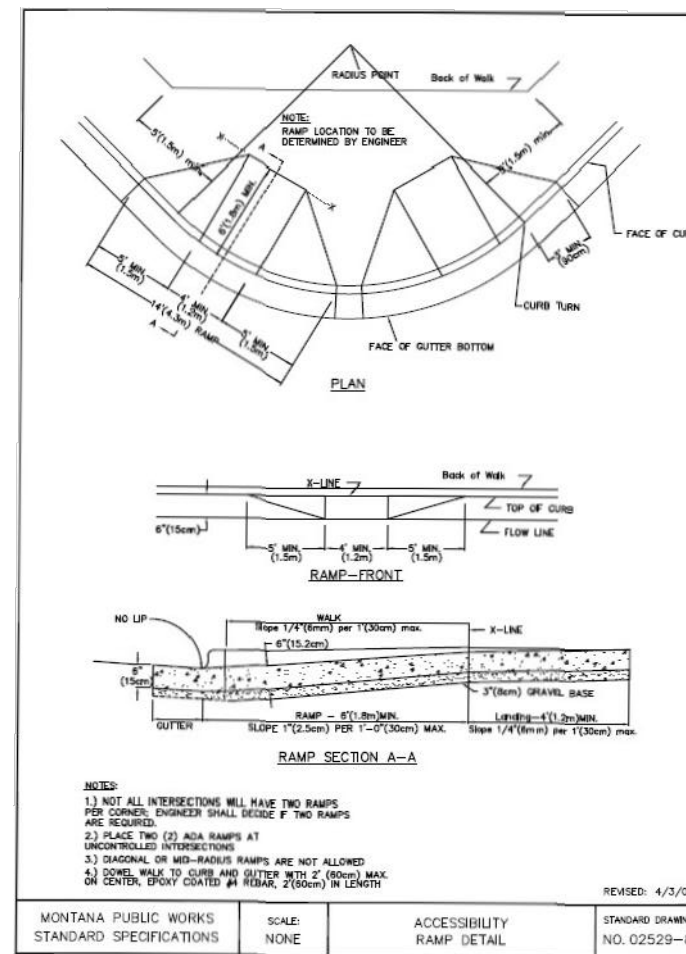
SIEVE SIZE	% PASSING
3/4" SIEVE	100%
No. 4 SIEVE	40-80%
No. 10 SIEVE	25-60%
No. 200 SIEVE	8-20%

IN ADDITION, THE PORTION PASSING THE NO. 200 SIEVE CANNOT EXCEED 2/3 OF THE PORTION PASSING THE #40 SIEVE; THE MAXIMUM LIQUID LIMIT FOR THE MATERIAL PASSING THE NO. 40 SIEVE SHALL NOT EXCEED 35, WHILE THE PLASTICITY INDEX CAN VARY BETWEEN 3 AND 10; THE WEAR FACTOR SHALL NOT EXCEED 50% AT 500 REVOLUTIONS; AND AT LEAST 20% OF THE AGGREGATE RETAINED ON NO. 4 SIEVE SHALL HAVE A FRACTURED FACE.

- IMPORT MATERIAL REQUIRED TO COMPLETE EARTHWORK SHALL BE IMPORTED FROM OFF-SITE AND SHALL BE CLEAN MATERIAL SUITABLE FOR FILL MATERIAL. EXCESS EXCAVATION MATERIALS SHALL BE DISPOSED OF BY THE CONTRACTOR IN A LOCATION APPROVED BY THE OWNER.
- WHERE SHALLOW FILL INTERSECTS EXISTING TREES, CARE WILL BE TAKEN NOT TO DAMAGE THE TREE, USE HAND WORK AS NEEDED TO PROTECT THE TREE FROM DAMAGE.



PRECAST CONCRETE WHEEL STOP DETAIL
(Not to Scale)



K. Harrington 11/2/21
DRAWN BY: DATE:
CHECKED BY: DATE:

REVISED BY: DATE:
APPROVED BY: DATE:

APPROVED BY: DATE:
APPROVED BY: DATE:



**MONTANA FISH,
WILDLIFE & PARKS**

Notes and Details
Anaconda Smoke Stack State Park Parking Improvements

SHEET: 4
of 4