

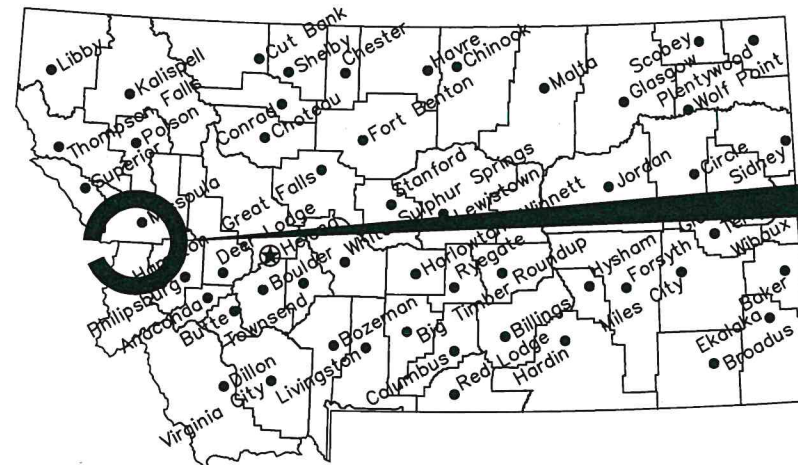
MONTANA FISH, WILDLIFE & PARKS

Travelers Rest State Park

Chip Seal & Re-stripe Project

Missoula County, Montana

FWP# 7196144

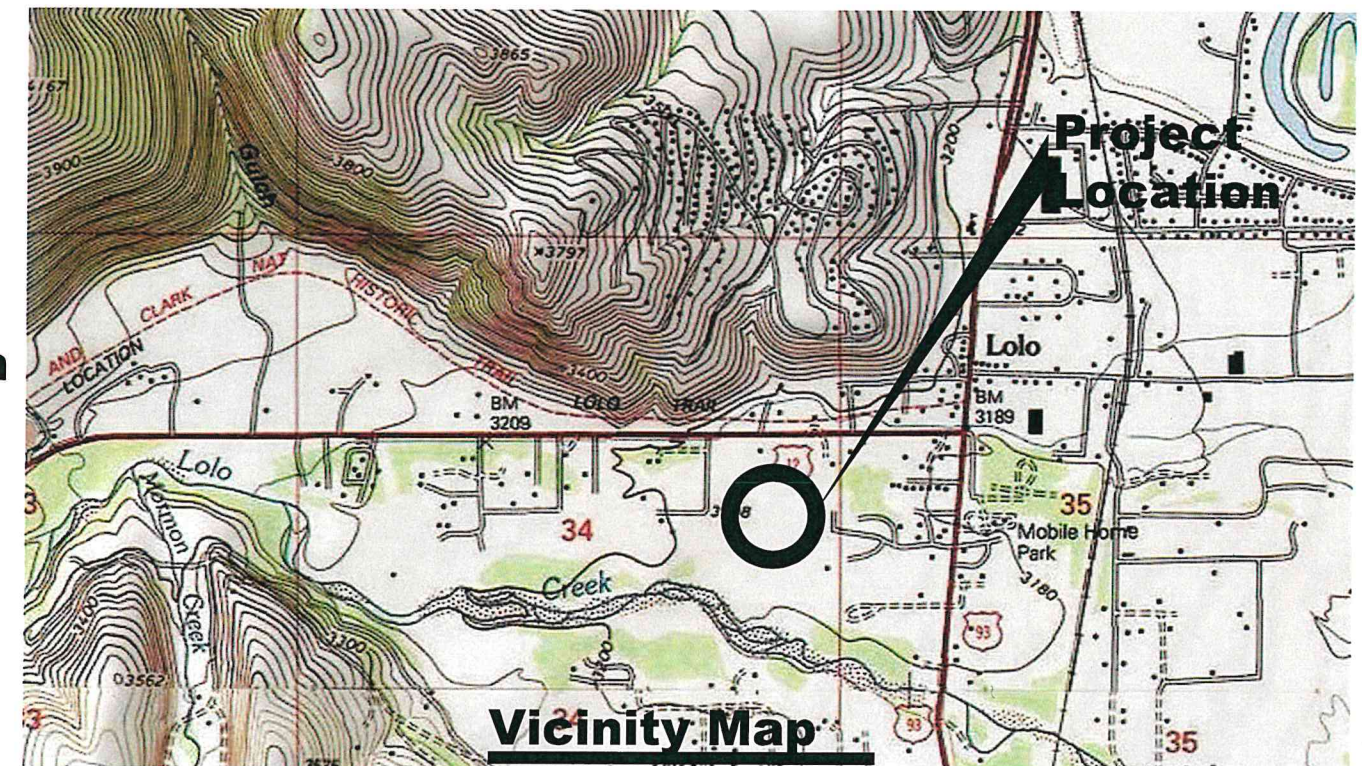


Location Map

No Scale

Project Location

North



Vicinity Map

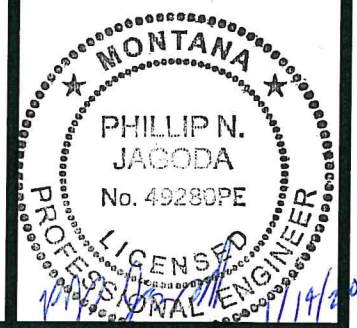
No Scale

MONTANA FISH, WILDLIFE AND PARKS
DESIGN AND CONSTRUCTION

MAILING ADDRESS: PO BOX 200701
HELENA, MT 59620-0701
TEL 406.841.4000
FAX 406.841.4004
<https://fwp.mt.gov/aboutfwp/design-and-construction>

DRAWING INDEX

Sheet 1.) Cover sheet Travelers Rest Chip seal
Sheet 1.) Site Plan 1
Sheet 1.) Site plan details



K Harrington
DRAWN BY: DATE: 11/18/21
CHECKED BY: DATE:

APPROVED BY: DATE:
APPROVED BY: DATE:

APPROVED BY: DATE:
APPROVED BY: DATE:



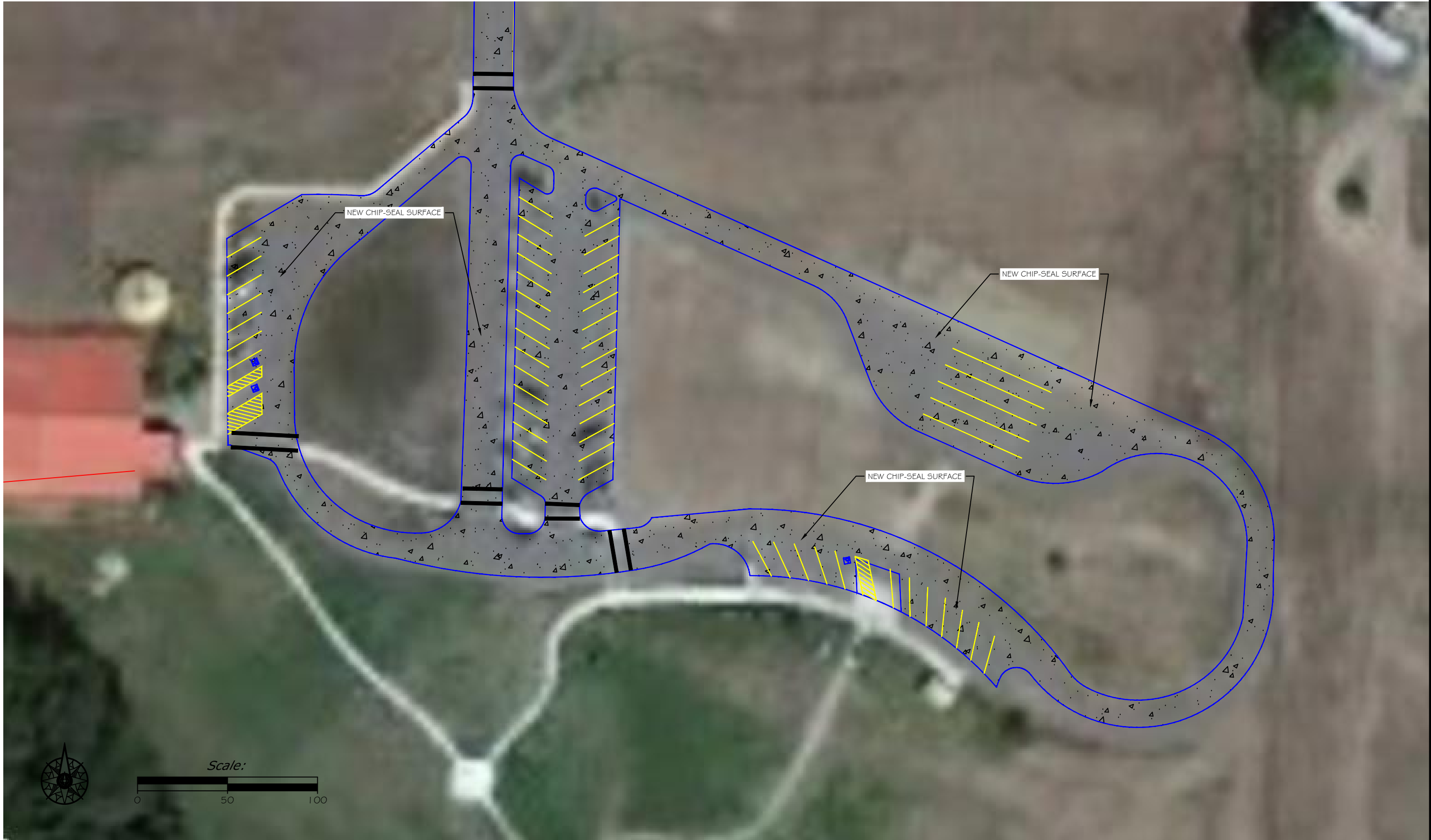
MONTANA FISH,
WILDLIFE & PARKS

110

Cover Sheet
Travelers Rest State Park Chip Seal & Re-stripe project



SHEET: 1 of 2



K.Harrington	11/18/21
DRAWN BY:	DATE:
CHECKED BY:	DATE:

REVISED BY:	DATE:
APPROVED BY:	DATE:

APPROVED BY:	DATE:
APPROVED BY:	DATE:



**MONTANA FISH,
WILDLIFE & PARKS**

111

Site Plan

Travelers Rest State Park Chip Seal & Re-stripe



SHEET: 2 of 3



K.Harrington 11/18/21
 DRAWN BY: DATE:
 CHECKED BY: DATE:

REVISED BY: DATE:
 APPROVED BY: DATE:

APPROVED BY: DATE:
 APPROVED BY: DATE:



**MONTANA FISH,
 WILDLIFE & PARKS**

112

Site Plan

Travelers Rest State Park Chip Seal & Re-stripe



SHEET: 3 of 3