

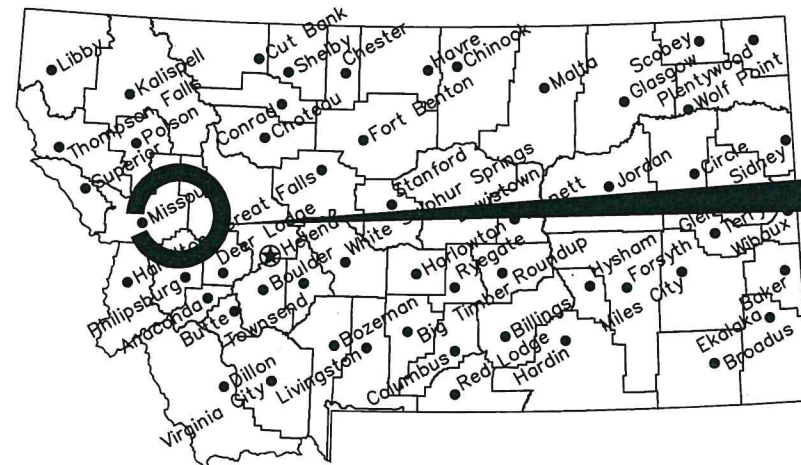
MONTANA FISH, WILDLIFE, & PARKS

PLACID & SALMON LAKE CAMPGROUND

ASPHALT SEAL AND STRIPE

Missoula County, Montana

FWP Project #7196142

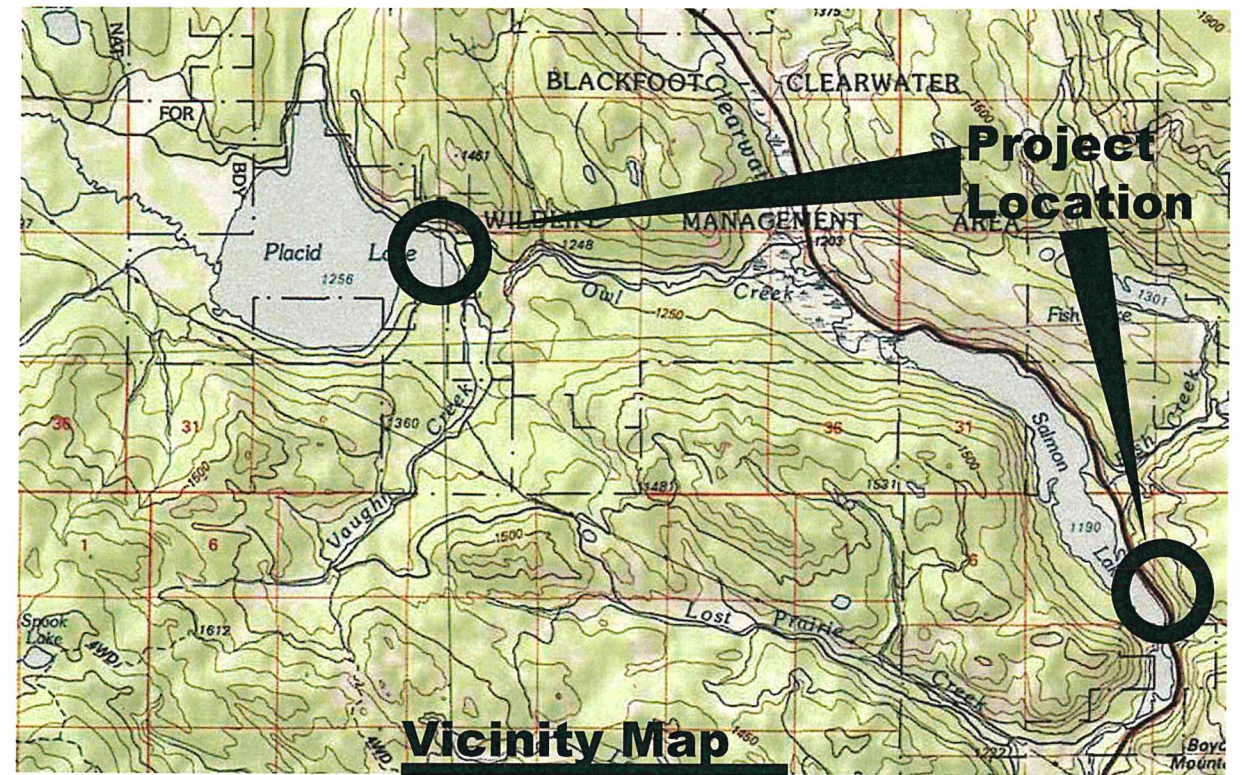


Location Map

No Scale

Project Location

North



Vicinity Map

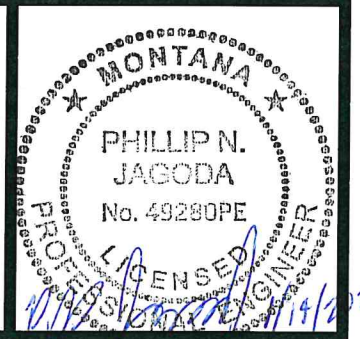
No Scale

MONTANA FISH, WILDLIFE AND PARKS
DESIGN AND CONSTRUCTION

MAILING ADDRESS: PO BOX 200701
HELENA, MT 59620-0701
TEL 406.841.4000
FAX 406.841.4004
<https://fwp.mt.gov/aboutfwp/design-and-construction>

DRAWING INDEX

Sheet 1.0 Cover Sheet
Sheet 2.0 Placid Lake Site Plan
Sheet 3.0 Placid Lake Site Plan 2
Sheet 4.0 Placid Lake Site plan 3
Sheet 5.0 Salmon Lake campground 1
Sheet 6.0 Salmon Lake Campground 2
Sheet 7.0 Salmon Lake Day Use Area



K. Harrington 10/1/21
DRAWN BY: DATE:
CHECKED BY: DATE:

APPROVED BY: DATE:

APPROVED BY: DATE:

APPROVED BY: DATE:

APPROVED BY: DATE:



**MONTANA FISH,
WILDLIFE & PARKS**

112

COVER SHEET

Salmon and Placid Lake campground asphalt seal and stripe



SHEET: 1 of 7



K.Harrington	10/1/21
DRAWN BY:	DATE:
CHECKED BY:	DATE:

REVISED BY:	DATE:
APPROVED BY:	DATE:

APPROVED BY:	DATE:
APPROVED BY:	DATE:



**MONTANA FISH,
WILDLIFE & PARKS**

113

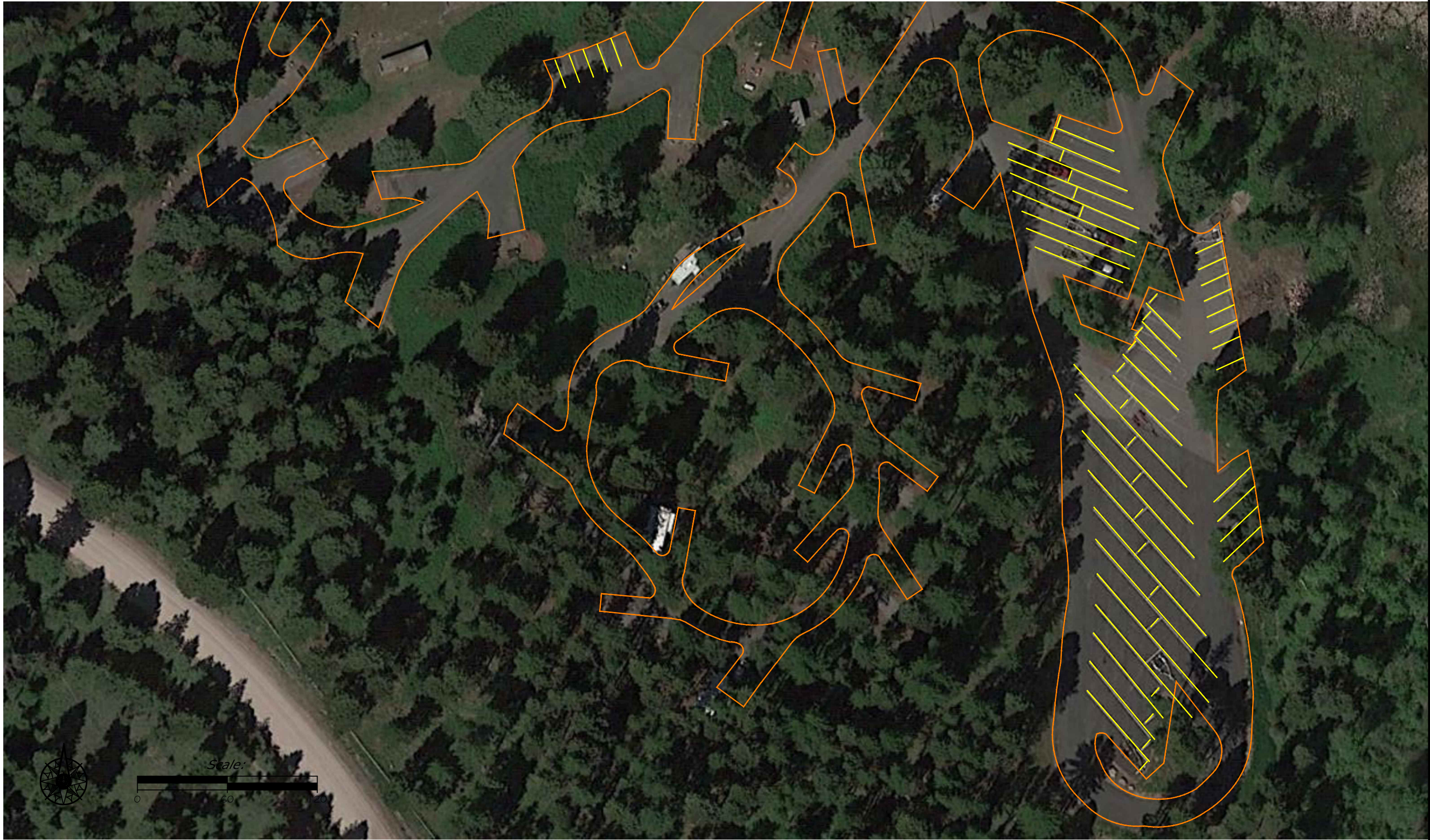
Placid Lake Site Plan

Salmon and Placid Lake campground asphalt seal and stripe



SHEET:

2
of
7



K.Harrington	10/1/21
DRAWN BY:	DATE:
CHECKED BY:	DATE:

REVISED BY:	DATE:
APPROVED BY:	DATE:

APPROVED BY:	DATE:
APPROVED BY:	DATE:



**MONTANA FISH,
WILDLIFE & PARKS**

Placid Lake Site Plan

Salmon and Placid Lake campground asphalt seal and stripe



SHEET: 3 of 7



K.Harrington	10/1/21
DRAWN BY:	DATE:
CHECKED BY:	DATE:

REVISED BY:	DATE:
APPROVED BY:	DATE:

APPROVED BY:	DATE:
APPROVED BY:	DATE:



**MONTANA FISH,
WILDLIFE & PARKS**

115

Placid Lake Site Plan

Salmon and Placid Lake campground asphalt seal and stripe



SHEET:

4
of
7



K.Harrington	10/1/21
DRAWN BY:	DATE:
CHECKED BY:	DATE:

REVISED BY:	DATE:
APPROVED BY:	DATE:

APPROVED BY:	DATE:
APPROVED BY:	DATE:



**MONTANA FISH,
WILDLIFE & PARKS**

116

Salmon Lake Site Plan

Salmon and Placid Lake campground asphalt seal and stripe



SHEET:

5
of
7



K.Harrington	10/1/21
DRAWN BY:	DATE:
CHECKED BY:	DATE:

REVISED BY:	DATE:
APPROVED BY:	DATE:

APPROVED BY:	DATE:
APPROVED BY:	DATE:



**MONTANA FISH,
WILDLIFE & PARKS**

Salmon Lake Site Plan

Salmon and Placid Lake campground asphalt seal and stripe



SHEET: 6
of 7



K.Harrington	10/1/21
DRAWN BY:	DATE:
CHECKED BY:	DATE:

REVISED BY:	DATE:
APPROVED BY:	DATE:

APPROVED BY:	DATE:
APPROVED BY:	DATE:



**MONTANA FISH,
WILDLIFE & PARKS**

118

Salmon Lake Site Plan

Salmon and Placid Lake campground asphalt seal and stripe



SHEET:

7
of
7