

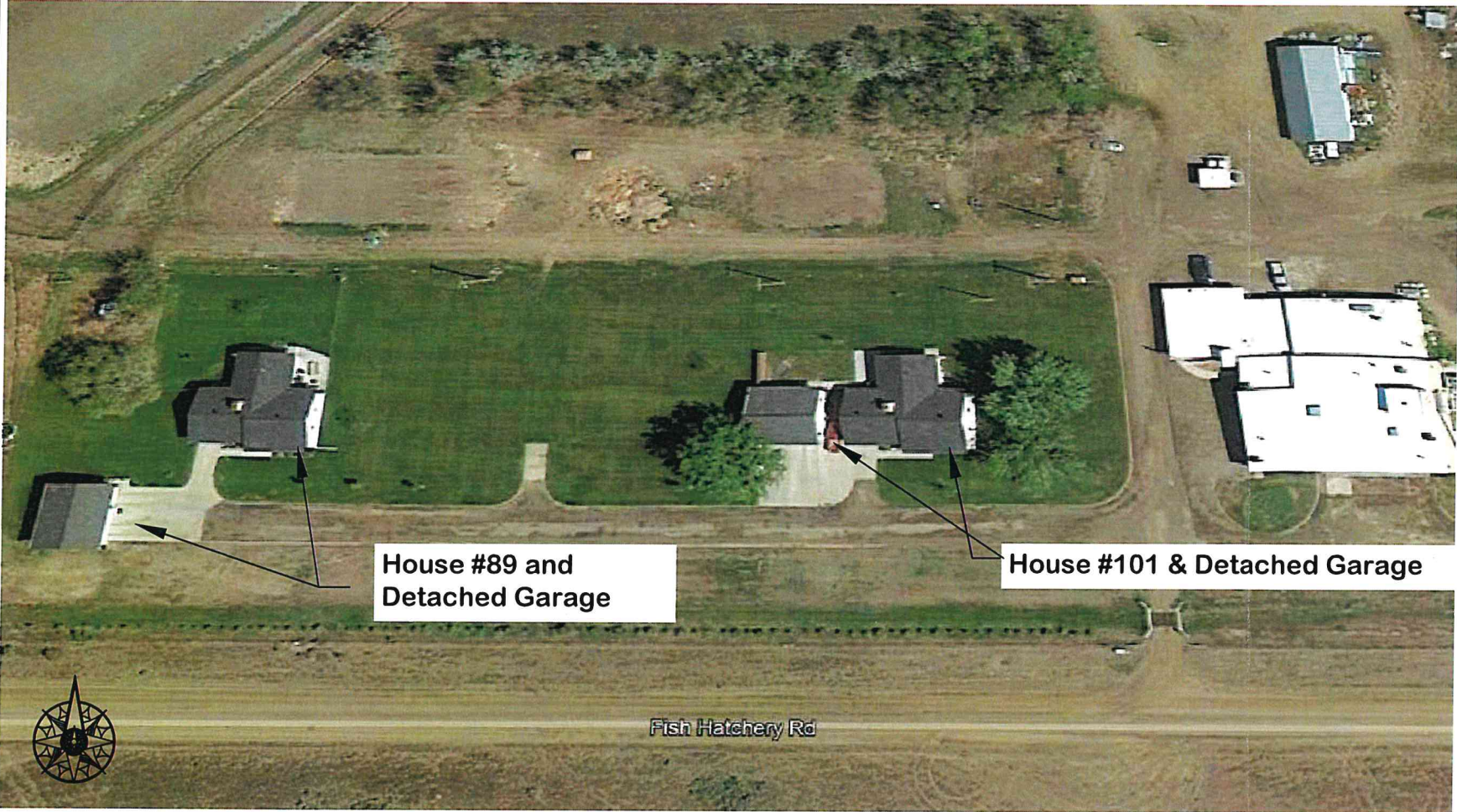
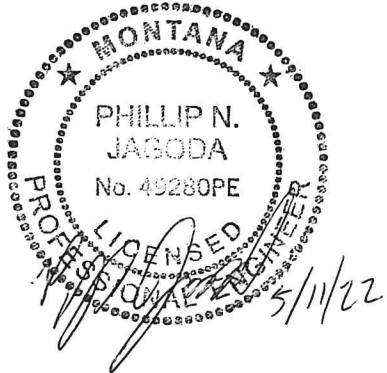
NOTES: CONTRACTOR TO REVIEW PROJECT SPECIFICATIONS FOR ALL APPLICABLE REQUIREMENTS, WHICH INCLUDE SOME OF THE FOLLOWING:

- 1. CONTRACTOR MUST PROTECT AC UNITS, SHRUBS, LAWN, LANDSCAPING, AND ANY OTHER STRUCTURES WHICH COULD BE DAMAGED DURING THE EXTERIOR PREPARATION & PAINTING.
- 2. IT IS THE CONTRACTOR'S RESPONSIBILITY TO CONFIRM DIMENSIONS AND LAYOUT FOR QUANTIFYING MATERIALS. WASTE FACTORS, MULTIPLE COATS, OR OTHER NECESSARY ITEMS ARE CONSIDERED INCIDENTAL TO THE PROJECT AND WILL NOT BE PAID AS EXTRA.
- 3. REMOVE ALL DEBRIS FROM THE SITE AT THE END OF THE PROJECT. DISPOSE OF DEBRIS IN SAFE AND LEGAL MANNER.
- 4. PROTECT ALL EXTERIOR SURFACES AND AREAS, INCLUDING LANDSCAPING, WALKS, DRIVES, ALL ADJACENT BUILDING SURFACES (INCLUDING GLASS, ALUMINUM SURFACES, ETC.) AND EQUIPMENT AND ANY LABELS AND SIGNAGE FROM REPAINTING OPERATIONS AND DAMAGE BY DROP CLOTHS, SHIELDS, MASKING, TEMPLATES, OR OTHER SUITABLE PROTECTIVE MEANS AND REPAIR ANY DAMAGE CAUSED BY FAILURE TO PROVIDE SUCH PROTECTION.
- 5. ANY TIRE RUTS ON THE LANDSCAPED LAWNS CAUSED FROM EQUIPMENT MUST BE REPAIRED BY CONTRACTOR, EXCESSIVE DAMAGE TO THE LAWNS WILL NOT BE ALLOWED AND WILL BE REPAIRED TO THE APPROVAL OF THE FACILITY MANAGER & ENGINEER.
- 6. RESIDENTS & STAFF WILL RESIDING IN HOUSES DURING PROJECT WORK, CONTRACTOR MUST PROVIDE PROTECTION FROM FALLING DEBRIS.
- 7. COORDINATE MATERIAL STAGING AREAS WITH FACILITY FWP STAFF.
- 8. SEE PROJECT MANUAL FOR COMPLETE SPECIFICATIONS.
- 9. CONTRACTOR TO PROVIDE SUBMITTALS FOR ALL PAINTING MATERIALS USED IN PROJECT. COLOR CHOICES TO BE COORDINATED WITH FWP FACILITY STAFF.

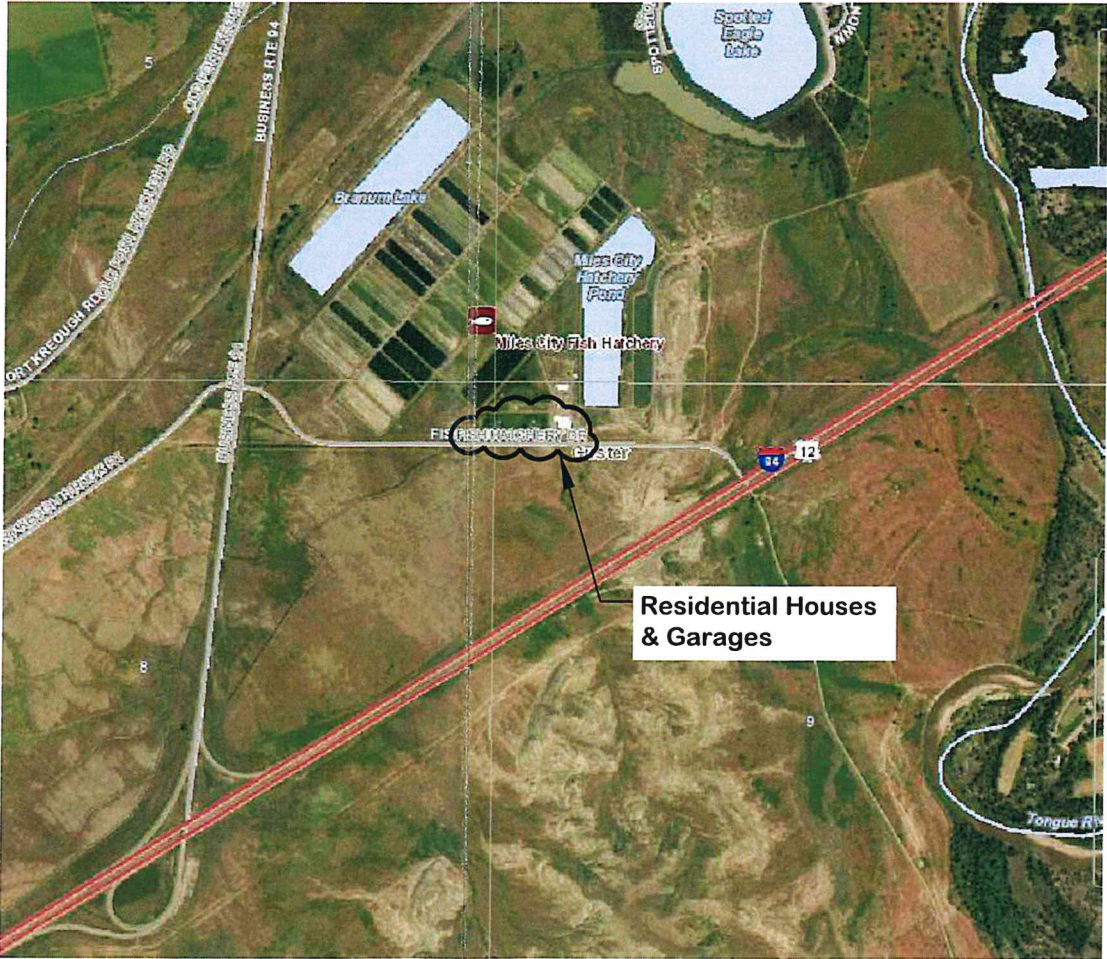
EXISTING MATERIALS NOTES

- 1. BOTH HOUSES & DETACHED GARAGES ARE OF SIMILAR DIMENSIONS & MATERIALS OF CONSTRUCTION.

DESCRIPTION	MATERIAL OF CONSTRUCTION
SIDING	WOOD LAP SIDING
SOFFIT	ALUMINUM
FASCIA	ALUMINUM
TRIM	WOOD
WINDOWS	VARIES ALUMINUM & WOOD



Site Plan  
NTS



Site Locus  
NTS

P. Jagoda	4/13/2022				
DRAWN BY:	DATE:	REVISED BY:	DATE:	APPROVED BY:	DATE:
P. Jagoda	4/13/2022				
CHECKED BY:	DATE:	APPROVED BY:	DATE:	APPROVED BY:	DATE:



MONTANA FISH,  
WILDLIFE & PARKS

Site Plan and Notes  
Miles City Fish Hatchery - Exterior Painting Houses & Garages

SHEET: 1 of 2





House #101 South elev.



House #101 eaves, soffit & window trim



#101 Detached Garage - South elev.



House #89 South elev.



House #89 NE elev.



#89 Detached Garage - SW elev.