

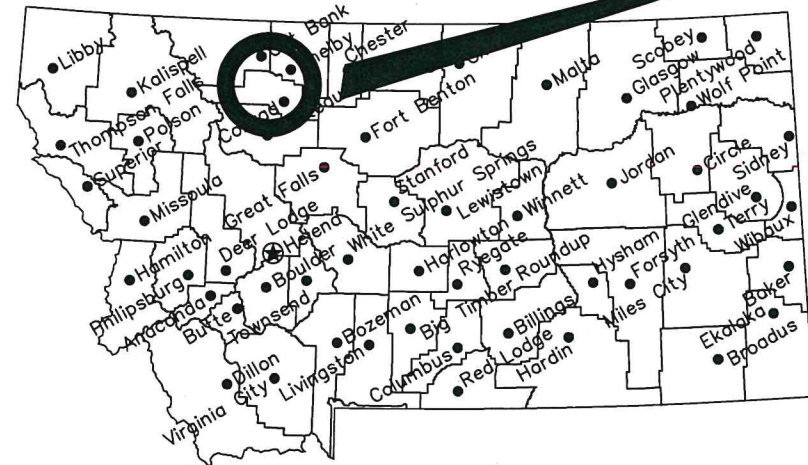
MONTANA FISH, WILDLIFE & PARKS

Marias River WMA

Clark Access Gravel 2022

Near Shelby, MT

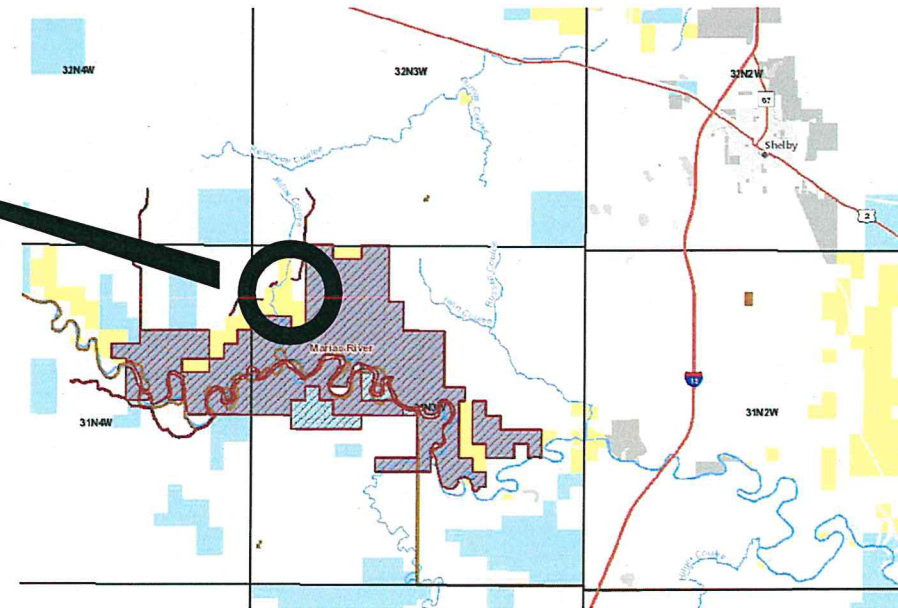
FWP # 7215406



Location Map

No Scale

Project Location



Vicinity Map

No Scale

North



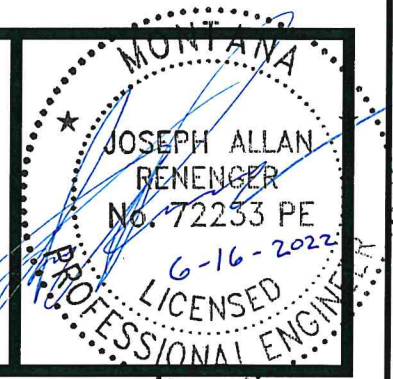
MONTANA FISH, WILDLIFE AND PARKS
DESIGN AND CONSTRUCTION

MAILING ADDRESS: PO BOX 200701
HELENA, MT 59620-0701
TEL 406.841.4000
FAX 406.841.4004
fwp.mt.gov/Doing Business/Design&Construction

PHYSICAL ADDRESS: 1522 9th AVENUE
HELENA, MT 59601

DRAWING INDEX

- 1 Cover
- 2 Site Plan



J. Renenger 6/5/2022
DRAWN BY: DATE:
P. Jagoda 6/9/2022
CHECKED BY: DATE:

APPROVED BY: DATE:
APPROVED BY: DATE:

APPROVED BY: DATE:
APPROVED BY: DATE:

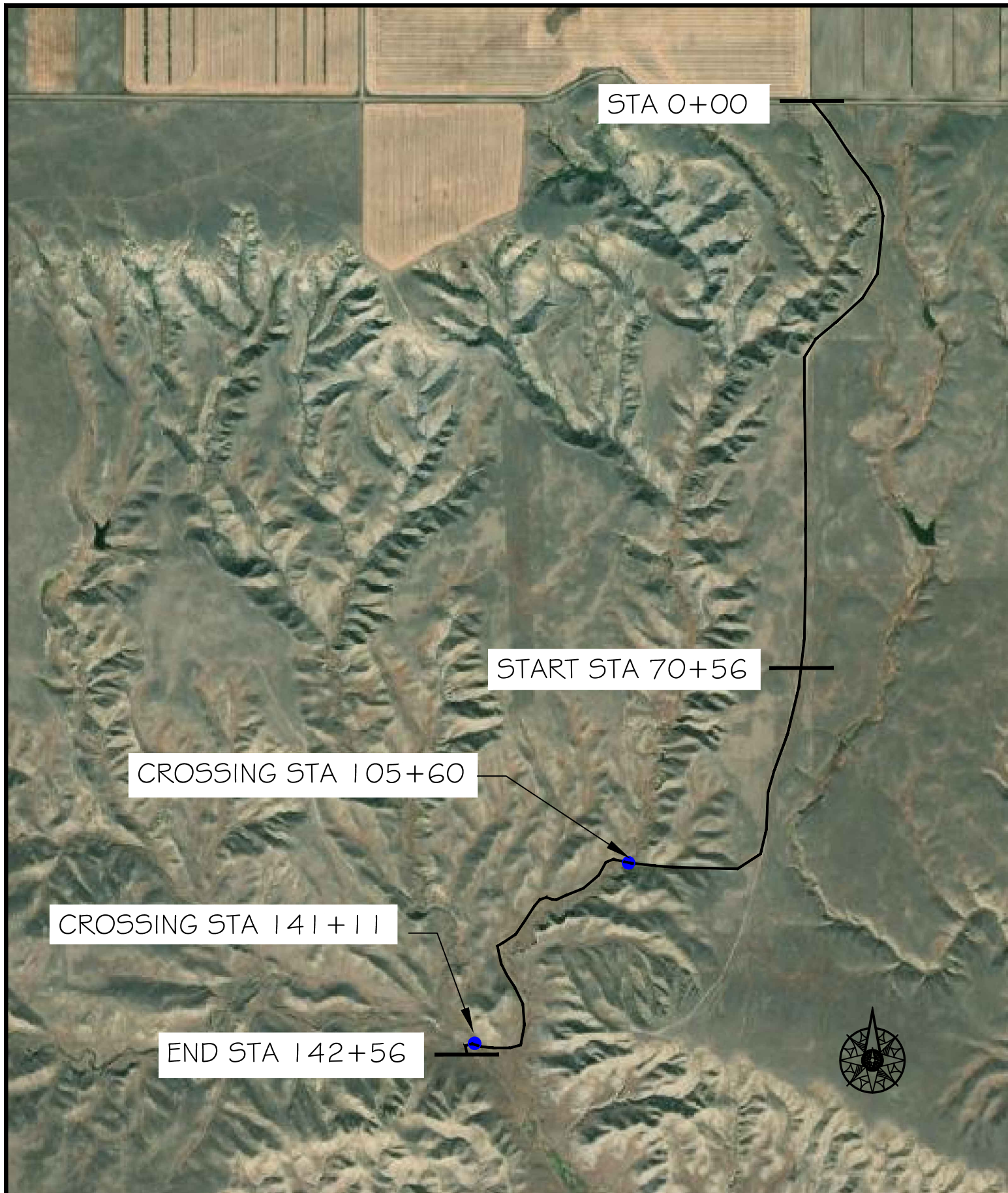


MONTANA FISH,
WILDLIFE & PARKS

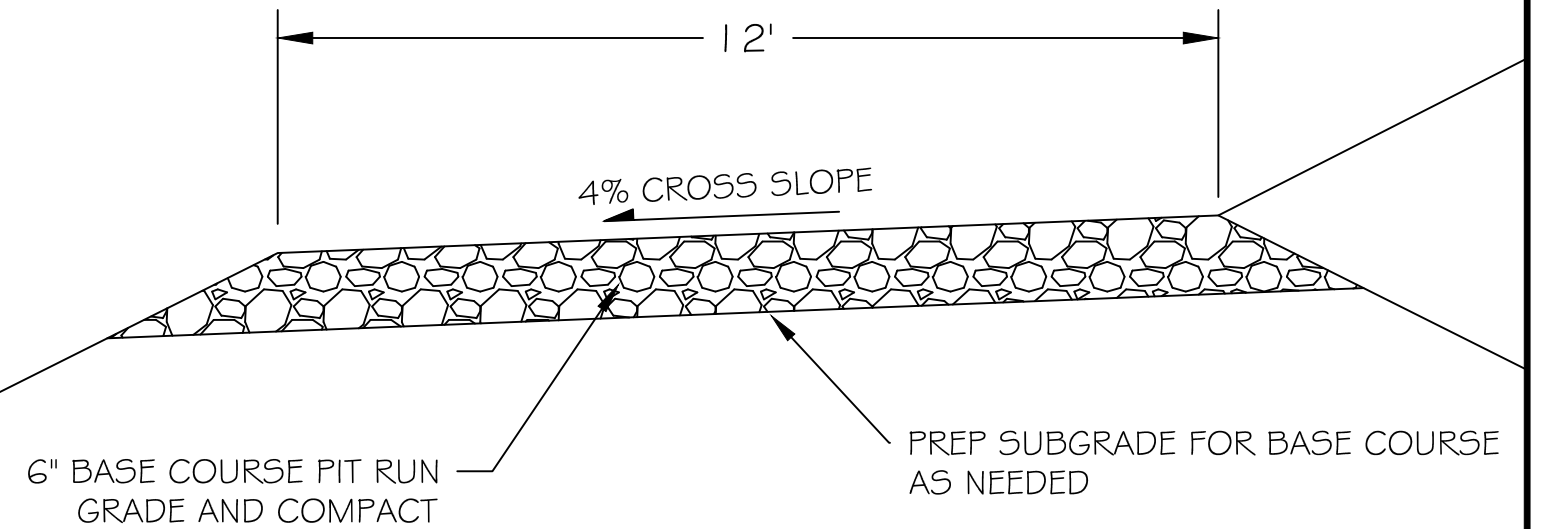
132

Cover
Marias River WMA Clark Access Gravel 2022

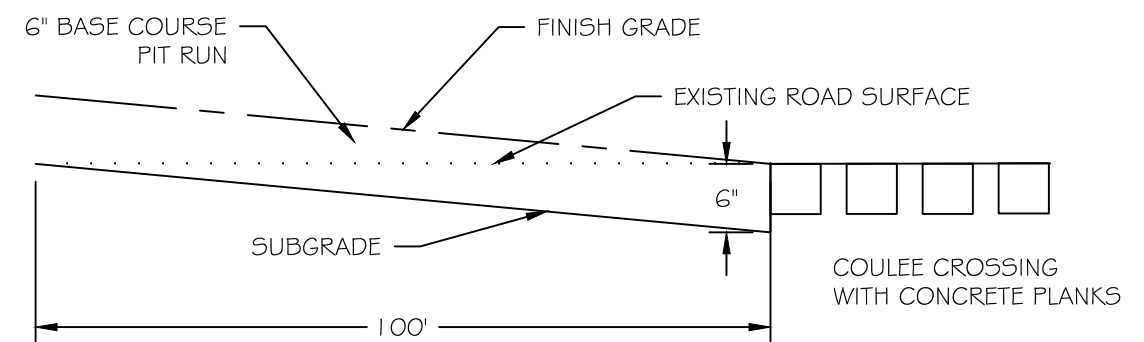
SHEET: 1 of 2



TYPICAL SECTION



STA 105+60
141+11



- NOTE:
1. TAPER SUBGRADE FOR 100' FOR TRANSITION.
 2. LEAVE CONCRETE PLANKS IN COULEE CROSSING AT EXISTING ELEVATION.

J. Renenger 6/5/2022
DRAWN BY: DATE:
P. Jagoda 6/9/2022
CHECKED BY: DATE:

REVISED BY: DATE:
APPROVED BY: DATE:

APPROVED BY: DATE:
APPROVED BY: DATE:



**MONTANA FISH,
WILDLIFE & PARKS**

133

Site Plan
Marias River WMA Clark Access Gravel

SHEET: 2
of 2