

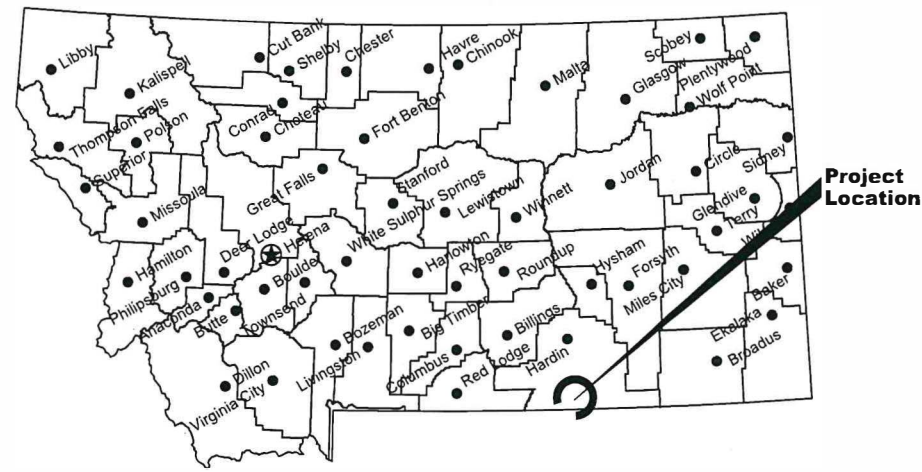
Montana Fish, Wildlife & Parks

# TONGUE RIVER STATE PARK

## MANAGER'S RESIDENCE IMPROVEMENTS RE-BID

Near Decker, Big Horn County, Montana

FWP Project No. - 7216321



**Location Map**

No Scale



**Vicinity Map**

No Scale

North



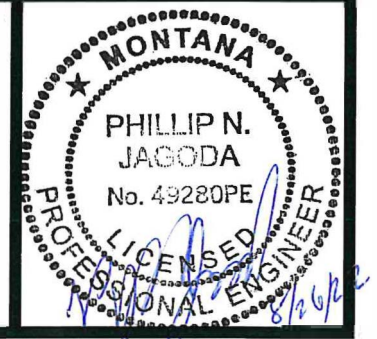
MONTANA FISH, WILDLIFE AND PARKS  
DESIGN AND CONSTRUCTION

MAILING ADDRESS:  
PO BOX 200701  
HELENA, MT 59620-0701  
TEL 406.841.4000  
FAX 406.841.4004  
fwp.mt.gov/Doing Business/Design&Construction

PHYSICAL ADDRESS:  
1522 9th AVENUE  
HELENA, MT 59601

### DRAWING INDEX

Sheet	Description
1	Cover
2	Site Plan and Elevation view
3	Elevation and Details



K. Harrington 07/27/22  
DRAWN BY: DATE:  
K. Harrington 07/27/22  
CHECKED BY: DATE:

APPROVED BY: DATE:  
APPROVED BY: DATE:

APPROVED BY: DATE:  
APPROVED BY: DATE:



**MONTANA FISH,  
WILDLIFE & PARKS**

111

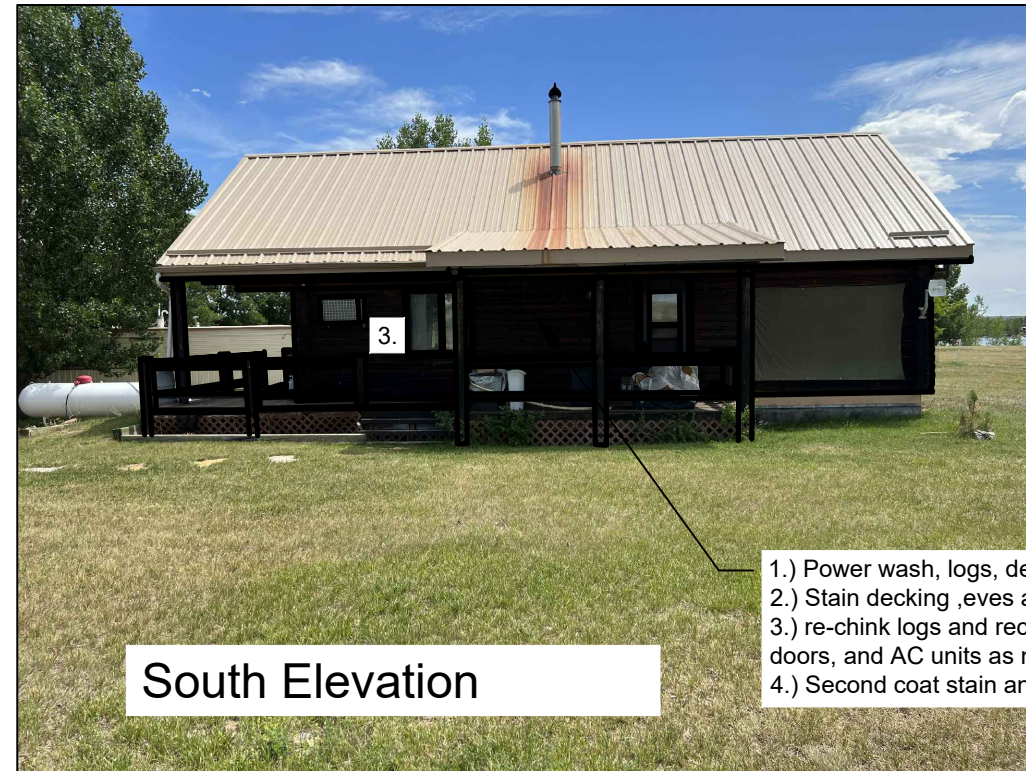
Manager's Residence Improvements  
Cover Sheet



SHEET: 1 of 3

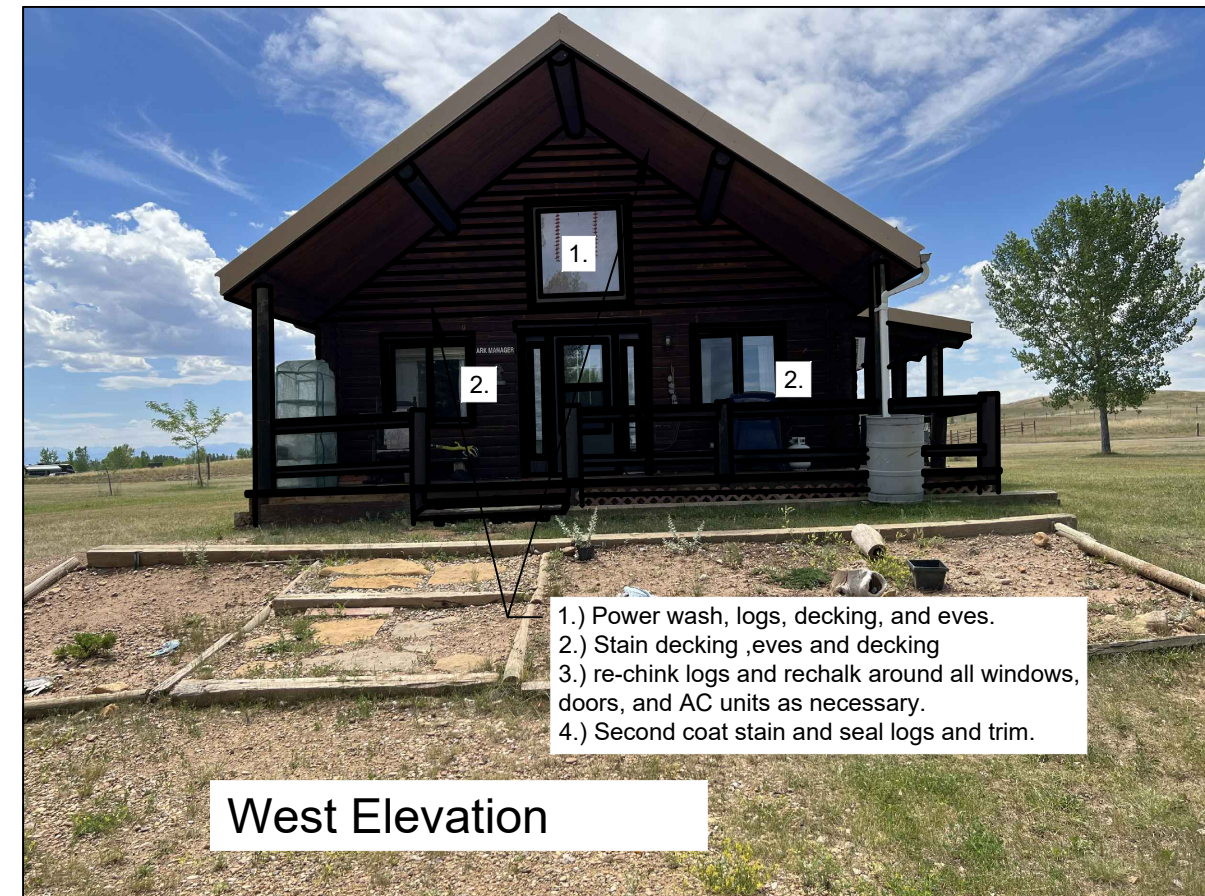


Project Site Manager's Residence



South Elevation

- 1.) Power wash, logs, decking, and eaves.
- 2.) Stain decking, eaves and decking
- 3.) re-chink logs and rechalk around all windows, doors, and AC units as necessary.
- 4.) Second coat stain and seal logs and trim.



West Elevation

- 1.) Power wash, logs, decking, and eaves.
- 2.) Stain decking, eaves and decking
- 3.) re-chink logs and rechalk around all windows, doors, and AC units as necessary.
- 4.) Second coat stain and seal logs and trim.

K. Harrington 7/27/22  
 DRAWN BY: DATE:  
 K. Harrington 7/27/22  
 CHECKED BY: DATE:

APPROVED BY: DATE:  
 APPROVED BY: DATE:

APPROVED BY: DATE:  
 APPROVED BY: DATE:



**MONTANA FISH,  
 WILDLIFE & PARKS**

112

Park Mangers Residence Improvements  
 Site Plan and Elevation Views



SHEET: 2  
 of 3



East Elevation

- 1.) Power wash, logs, decking, and eaves.
- 2.) Stain decking, eaves and decking
- 3.) re-chink logs and re caulk around all windows, doors, and AC units as necessary.
- 4.) Second coat stain and seal logs and trim.



North Elevation

GENERAL NOTES:

1. CONFIRM DIMENSIONS AND LAYOUT FOR QUANTIFYING MATERIALS. SLOPE FACTOR, WASTE, AND OVERLAP IS INCIDENTAL TO THE PROJECT.
2. PROVIDE SUBMITTAL FOR ALL MATERIALS TO OWNER FOR APPROVAL PRIOR TO PROCUREMENT.
3. OBTAIN ALL PERMITS NECESSARY FOR WORK.
4. CONDUCT WORK MONDAY THROUGH FRIDAY, 8:00AM TO 5:00 PM. ADDITIONAL HOURS AND WEEKEND WORK IS SUBJECT TO OWNER APPROVAL.
5. STAGING OF ALL EQUIPMENT AND MATERIALS MUST BE ON STATE PROPERTY OR OTHERWISE ARRANGED BY CONTRACTOR PRIVATELY. MATERIALS STORAGE LOCATION MUST BE APPROVED BY PROJECT MANAGER FOR PAYMENT APPROVAL.
6. PROVIDE DUMPSTERS AND PORTABLE BATHROOM FACILITIES FOR CONTRACTOR USE. ALL REFUSE, REMNANTS, FASTENERS, ETC. MUST BE CLEANED UP AND IS SUBJECT TO OWNER APPROVAL PRIOR TO FINAL PAYMENT.
7. SURROUNDINGS MUST BE LEFT IN PRE-CONSTRUCTION CONDITION.

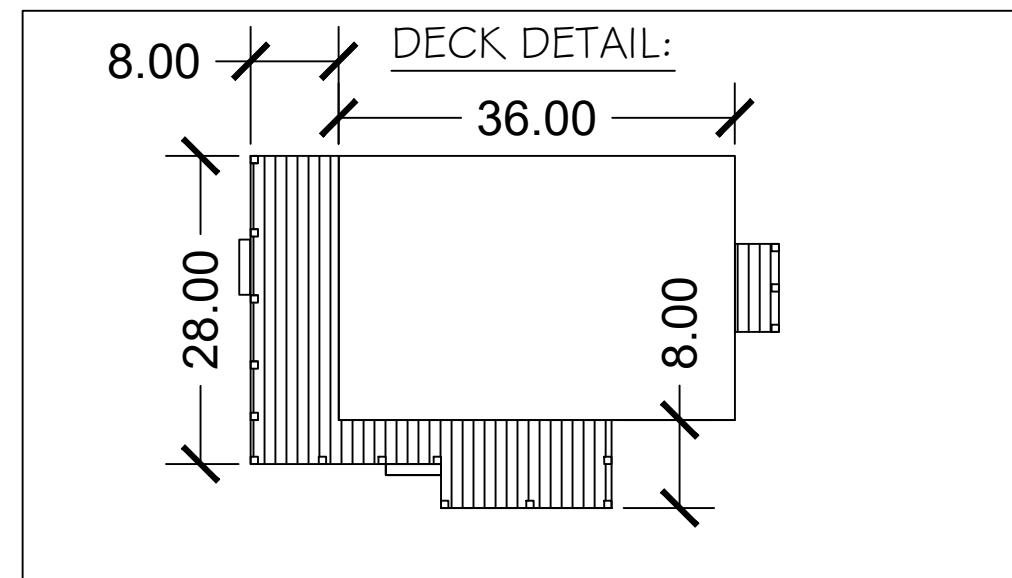
WINDOW SCHEDULE:

#	SIZE	VIEW	QUANTITY
1.	5'x5'	West	1
2.	4'x4'	West	2
3.	4'x4'	South	1
4.	2'x2'	East	1
5.	3'x3'	East	1
6.	4'x4'	East	1
7.	3'x4'	North	2

\* window nominal sizing to be verified by contractor.

CONSTRUCTION NOTES:

1. SEE INDIVIDUAL SHEETS FOR SPECIFIC NOTES REGARDING EACH STRUCTURE.



K. Harrington 7/27/22  
 DRAWN BY: DATE:  
 K. Harrington 7/27/22  
 CHECKED BY: DATE:

APPROVED BY: DATE:  
 APPROVED BY: DATE:

APPROVED BY: DATE:  
 APPROVED BY: DATE:



**MONTANA FISH,  
 WILDLIFE & PARKS**

**Park Manager's Residence Improvements  
 Elevation Views**

