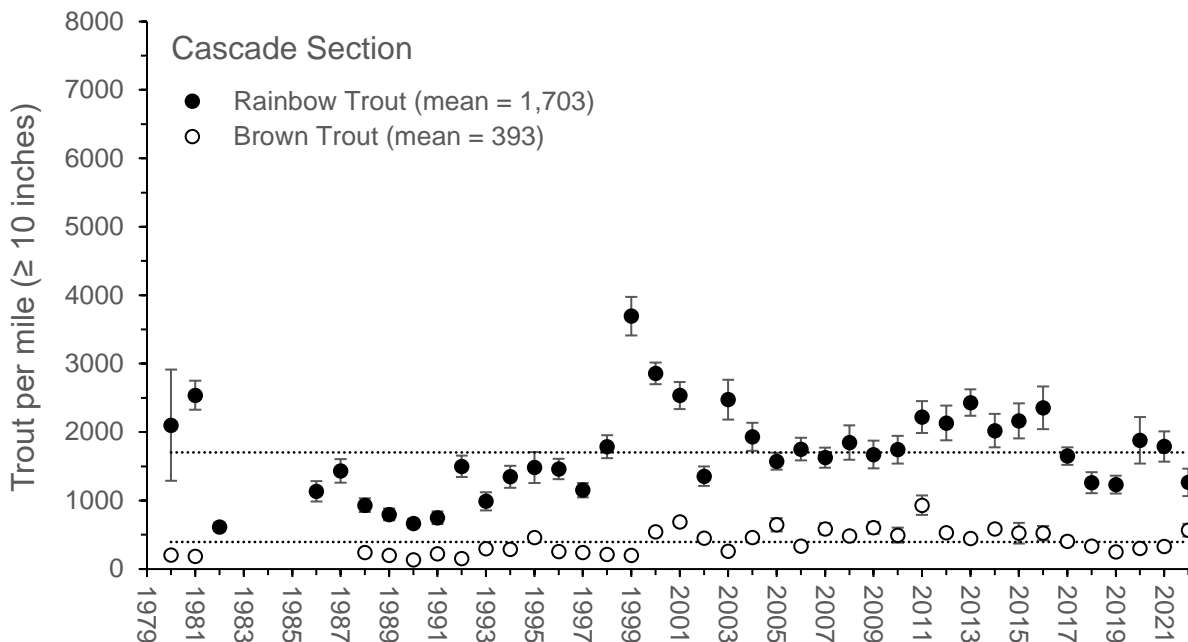
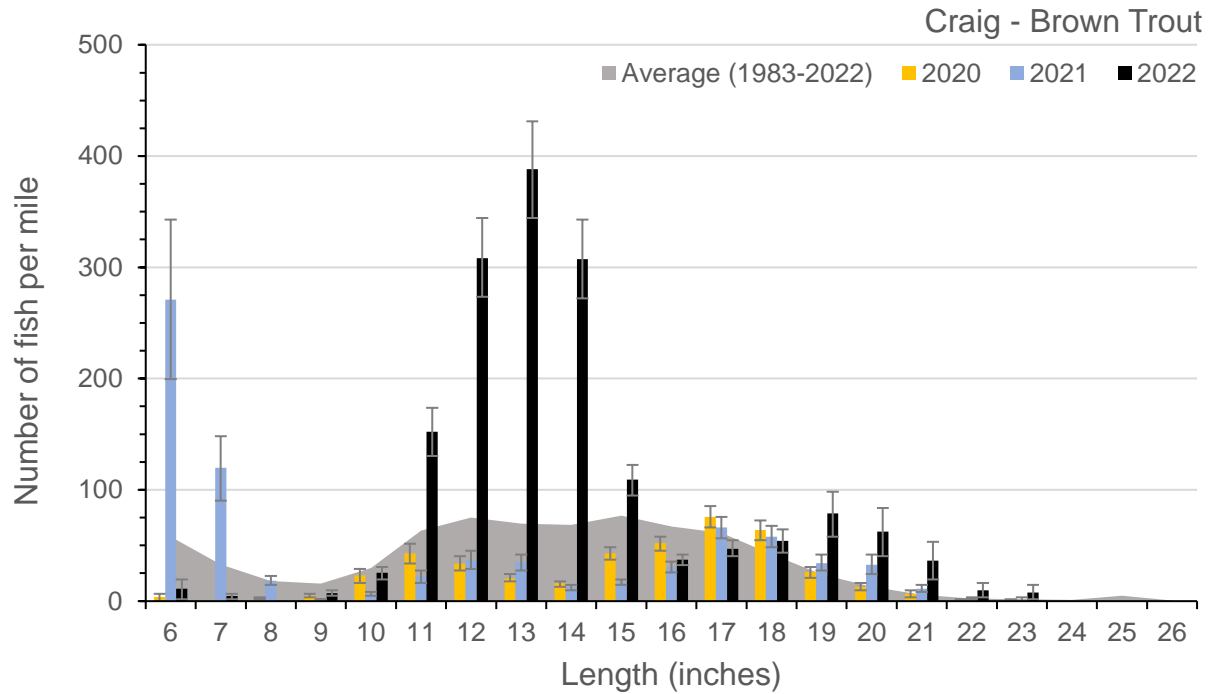


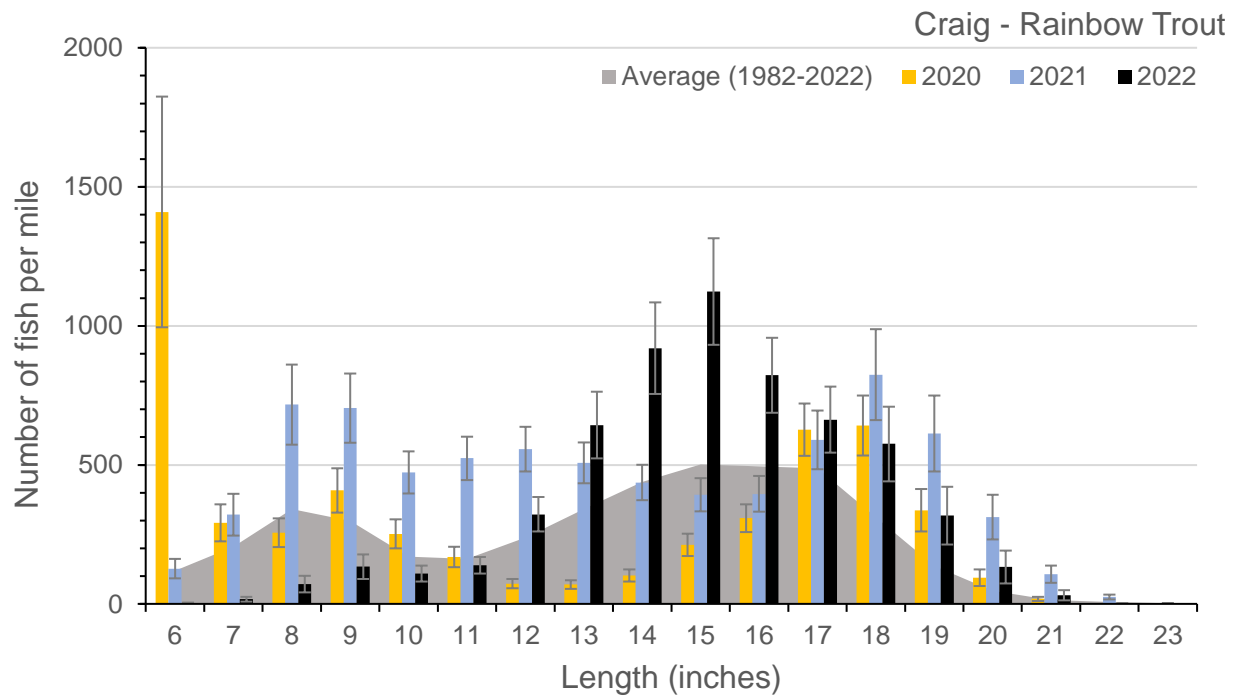
**Figure 1.** Population estimates of rainbow trout and brown trout (fish per mile) in the Missouri River, Montana within the Craig sampling section from 1982 through 2022. Estimates (mean and 95% confidence intervals) represent the model-averaged estimates for all trout 10 inches and greater using the maximum likelihood method. Long-term average number of rainbow trout and brown trout per mile are designated by horizontal dashed lines and 2022 estimates were 6,132 and 1,595, respectively.



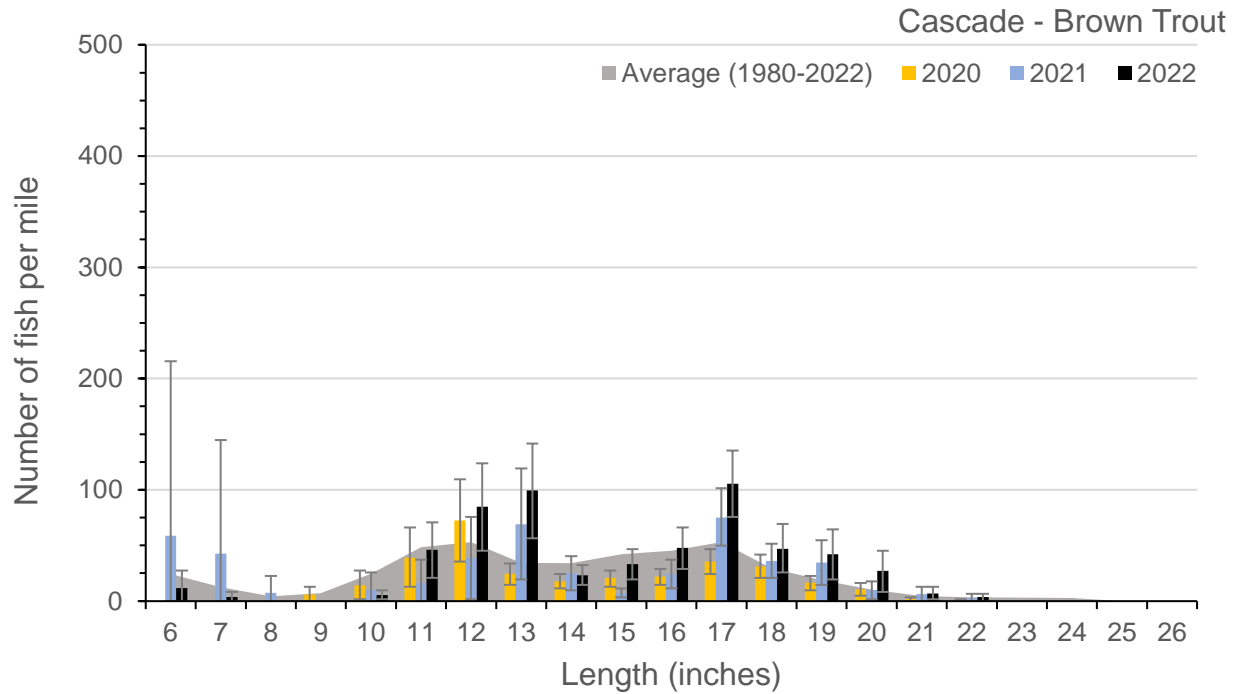
**Figure 2.** Population estimates of rainbow trout and brown trout (fish per mile) in the Missouri River, Montana within the Cascade sampling section from 1980 through 2022. Estimates (mean and 95% confidence intervals) represent the model-averaged estimates for all trout 10 inches and greater using the maximum likelihood method. Long-term average number of rainbow trout and brown trout per mile are designated by horizontal dashed lines and 2022 estimates were 1,265 and 566, respectively.



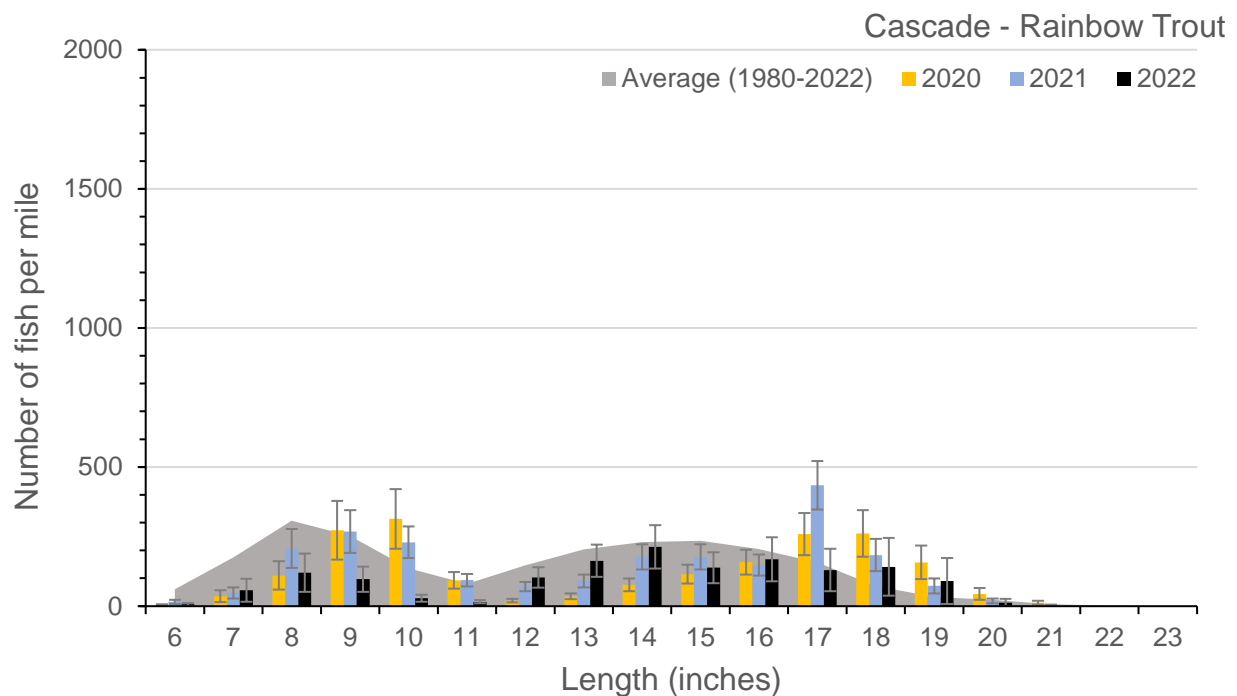
**Figure 3.** Length-frequency histogram of brown trout population estimates (fish per mile) by 1-inch length group for 2020, 2021, and 2022 for the Craig section of the Missouri River. The long-term average population estimate from 1983 through 2022 (n=36) by 1-inch length group is depicted by the gray shaded area.



**Figure 4.** Length-frequency histogram of rainbow trout population estimates (fish per mile) by 1-inch length group for 2020, 2021, and 2022 for the Craig section of the Missouri River. The long-term average population estimate from 1982 through 2022 (n=40) by 1-inch length group is depicted by the gray shaded area.



**Figure 5.** Length-frequency histogram of brown trout population estimates (fish per mile) by 1-inch length group for 2020, 2021, and 2022 for the Cascade section of the Missouri River. The long-term average population estimate from 1980 through 2022 (n=37) by 1-inch length group is depicted by the gray shaded area.



**Figure 6.** Length-frequency histogram of rainbow trout population estimates (fish per mile) by 1-inch length group for 2020, 2021, and 2022 for the Cascade section of the Missouri River. The long-term average population estimate from 1980 through 2022 (n=40) by 1-inch length group is depicted by the gray shaded area.