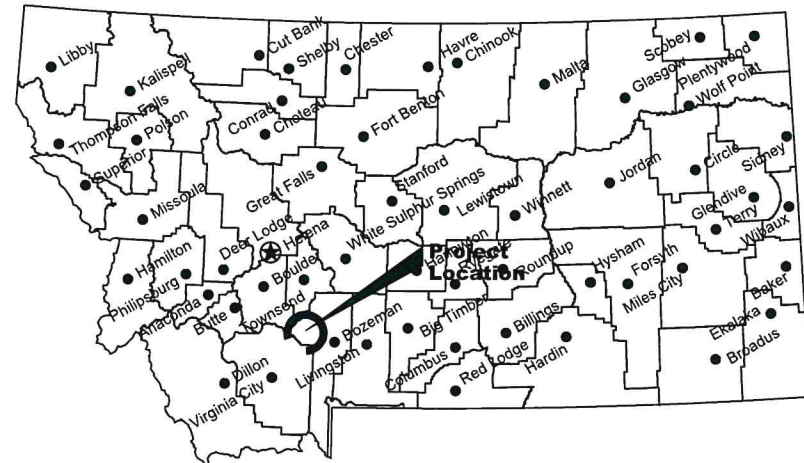


Montana Fish, Wildlife & Parks

# Missouri Headwaters State Park Comfort Station Fixture Replacement

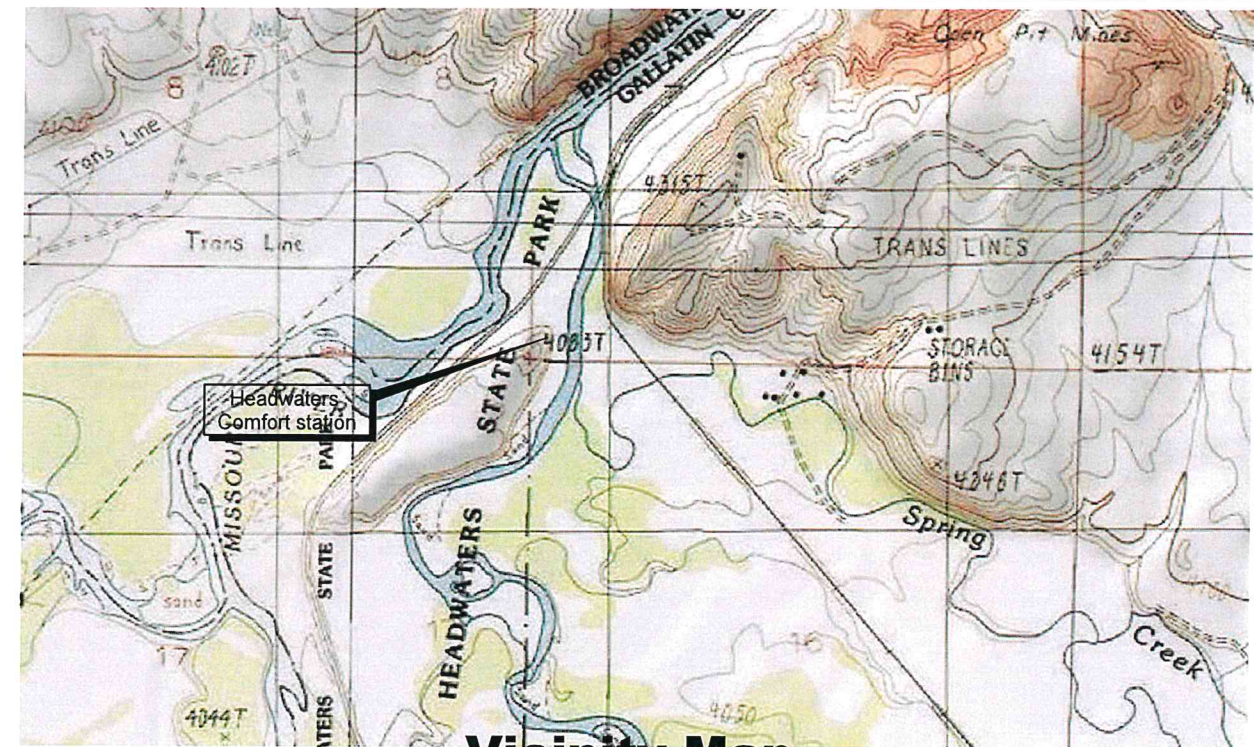
Three Forks, Gallatin County, Montana

FWP Project No. 7196152



**Location Map**

No Scale



**Vicinity Map**

No Scale

North



**MONTANA FISH, WILDLIFE AND PARKS  
DESIGN AND CONSTRUCTION**

MAILING ADDRESS: PO BOX 200701  
HELENA, MT 59620-0701  
TEL 406.841.4000  
FAX 406.841.4004  
fwp.mt.gov/Doing Business/Design&Construction

PHYSICAL ADDRESS: 1522 9th AVENUE  
HELENA, MT 59601

**DRAWING INDEX**

Sheet	Description
1	Cover
2	Vicinity map
3	Men's Restroom Fixtures
4	Women's Restroom Fixtures
5	Notes and Details
6	Details



Kevin Harrington Nov. 7, 2022  
DRAWN BY: DATE:

Kevin Harrington Nov. 7, 2022  
CHECKED BY: DATE:

APPROVED BY: DATE:

APPROVED BY: DATE:

APPROVED BY: DATE:

APPROVED BY: DATE:



**MONTANA FISH,  
WILDLIFE & PARKS**

35

Comfort Station Fixture Replacement  
Cover Sheet



SHEET: 1 of 6



Project location

**Overall Site**

No Scale

K. Harrington	11/7/22
DRAWN BY:	DATE:
K. Harrington	Date
CHECKED BY:	DATE:

APPROVED BY:	DATE:
APPROVED BY:	DATE:

APPROVED BY:	DATE:
APPROVED BY:	DATE:



**MONTANA FISH,  
WILDLIFE & PARKS**

36

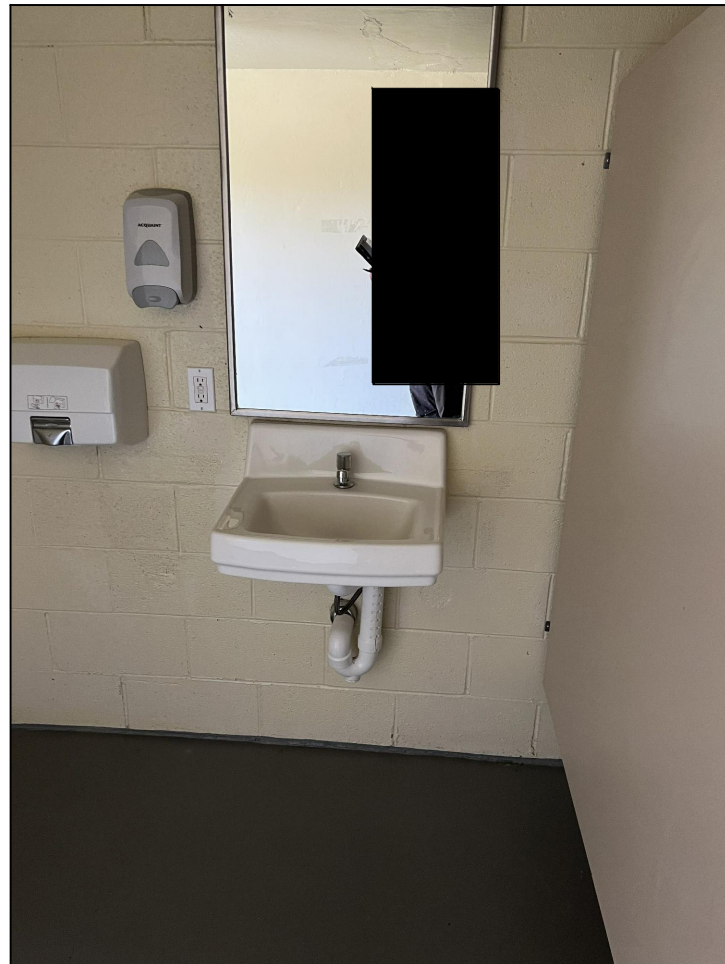
Comfort Station Fixture Replacement  
Vicinity Map



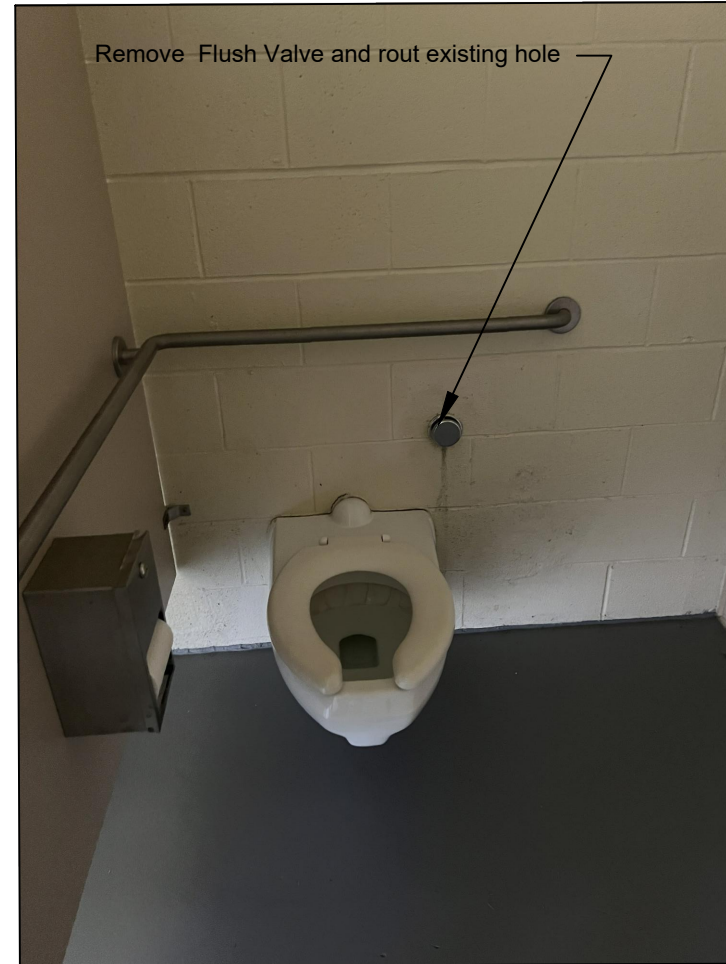
SHEET: 2  
of 6



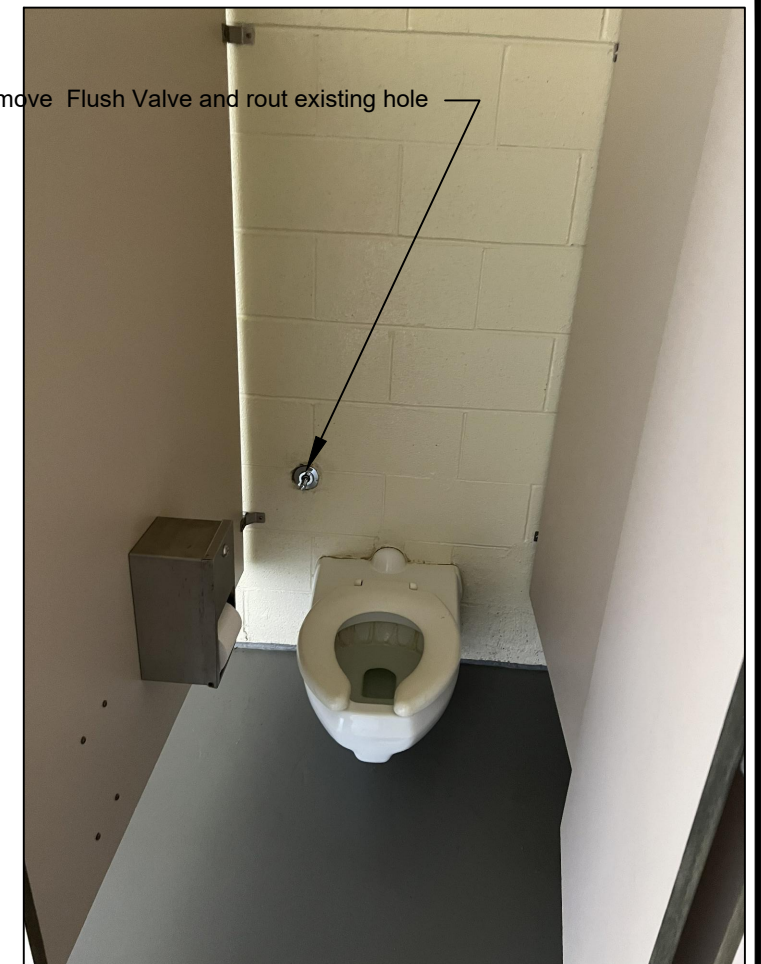
Comfort Station  
Access Room



Womens Restroom Sink  
Replacement



Womens Restroom Toilet  
Fixture Replacement



Ladies Room Toilet Fixture  
Replacement

K. Harrington 11/7/22  
DRAWN BY: DATE:  
K. Harrington Date  
CHECKED BY: DATE:

APPROVED BY: DATE:  
APPROVED BY: DATE:

APPROVED BY: DATE:  
APPROVED BY: DATE:



**MONTANA FISH,  
WILDLIFE & PARKS**

37

Comfort Station Fixture Replacement  
Womens Restroom Fixtures



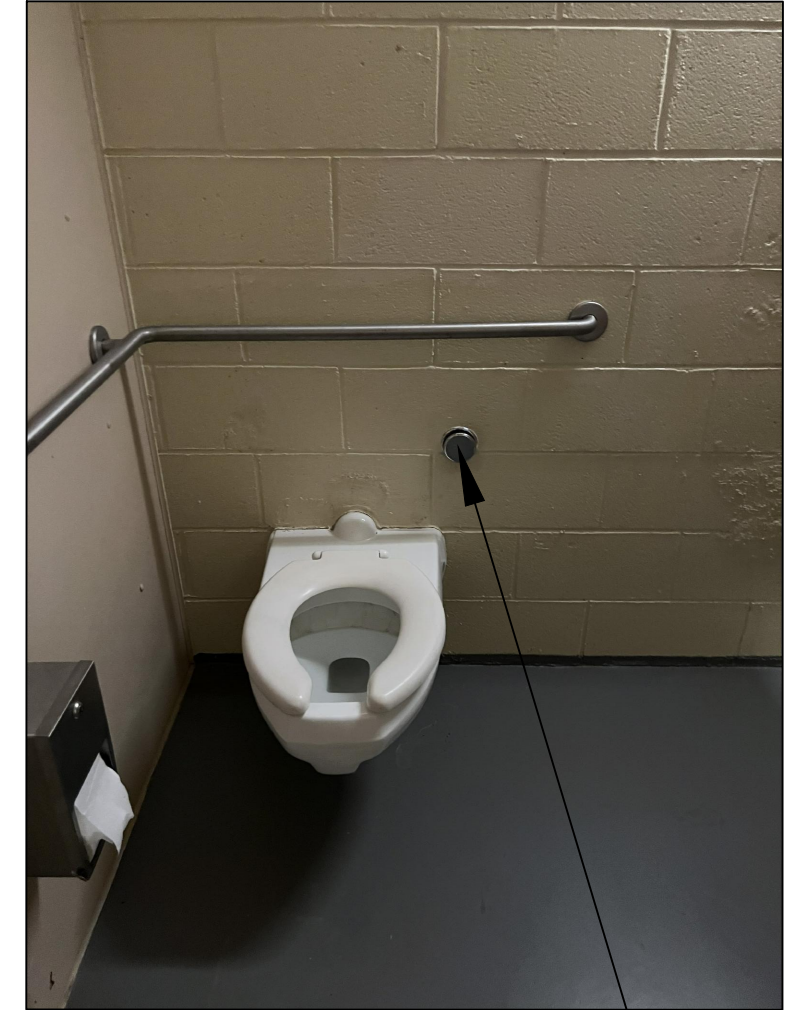
SHEET: 3  
of 6



Sink Fixture Replacement



Urinal Fixture Replacement



Mens Toilet Fixture Replacement

Remove existing Flush valve and Grout if necessary.

K. Harrington 11/7/22  
 DRAWN BY: DATE:  
 K. Harrington 11/7/22  
 CHECKED BY: DATE:

APPROVED BY: DATE:  
 APPROVED BY: DATE:

APPROVED BY: DATE:  
 APPROVED BY: DATE:



**MONTANA FISH,  
 WILDLIFE & PARKS**

38

Comfort Station Fixture Replacement  
 Mens Restroom Fixtures



SHEET: 4  
 of 6

**GENERAL NOTES:**

- CONFIRM DIMENSIONS AND LAYOUT
- PROVIDE SUBMITTAL FOR ALL MATERIALS TO OWNER FOR APPROVAL PRIOR TO PROCUREMENT.
- OBTAIN ALL PERMITS NECESSARY FOR WORK.
- CONDUCT WORK MONDAY THROUGH FRIDAY, 8:00AM TO 5:00 PM. ADDITIONAL HOURS AND WEEKEND WORK IS SUBJECT TO OWNER APPROVAL.
- STAGING OF ALL EQUIPMENT AND MATERIALS MUST BE ON STATE PROPERTY OR OTHERWISE ARRANGED BY CONTRACTOR PRIVATELY. MATERIALS STORAGE LOCATION MUST BE APPROVED BY PROJECT MANAGER FOR PAYMENT APPROVAL.
- PROVIDE DUMPSTERS AND PORTABLE BATHROOM FACILITIES FOR CONTRACTOR USE. ALL REFUSE, REMNANTS, FASTENERS, ETC. MUST BE CLEANED UP AND IS SUBJECT TO OWNER APPROVAL PRIOR TO FINAL PAYMENT.
- SURROUNDINGS MUST BE LEFT IN PRE-CONSTRUCTION CONDITION.

**PROJECT NOTES:**

- EXISTING FLUSH VALVES TO BE REMOVED AND HOLES GROUTED.
- IF WORK IS COMPLETED PRIOR TO PARK MANAGEMENT TURNING ON WATER, FINAL PAYMENT TO BE HELD UNTIL IT CAN BE TURNED AND AND ALL WORK VERIFIED.
- ALL EXISTING FIXTURES TO BE BE DISPOSED OF THE DAY REMOVED. DO NOT STORE IN STAGING AREA.
- MAINTAIN SAFE WORK ZONE AS PARK VISITORS MAY BE PRESENT DURING CONSTRUCTION.
- ALL WORK TO BE COMPLETED PER CURRENT PLUMBING CODES.
- REFER TO DETAILS ON THIS AND THE FOLLOWING PAGE AND ALSO LOCATED IN THE SPECIAL PROVISIONS. FIXTURES SHALL BE AMERICAN STANDARD OR APPROVED EQUAL.

**American Standard**  
Style That Works Better

**LUCERNE™**  
WALL-HUNG LAVATORY  
VITREOUS CHINA

BARRIER FREE

**LUCERNE™ WALL-HUNG LAVATORY**

- Wall-hung sink
- Vitreous china
- Front overflow
- D-shaped bowl
- Self-draining deck area with contoured back and side splash shields
- Faucet ledge

**Faucet holes on 203mm (8") centers (illus.):**

- 0356.028 For exposed bracket support. Shown with 4801.8622 Amani Heritage faucet with Triune Cross handles (not included)
- 0356.015 For wall hanger (included) or concealed arms support
- 0356.037 For wall hanger (included) or concealed arms support
  - Extra right-hand hole
- 0356.073 For wall hanger (included) or concealed arms support
  - Extra left-hand hole

**Faucet holes on 102mm (4") centers:**

- 0356.027 For exposed bracket support
- 0356.012 For wall hanger (included) or concealed arms support
- 0356.034 For wall hanger (included) or concealed arms support
  - Extra right-hand hole
- 0356.056 For wall hanger (included) or concealed arms support
  - Extra left-hand hole

**Single center faucet hole (illus.):**

- 0356.041 For exposed bracket support. Shown with 1340.000 metering faucet (not included)
- 0356.421 For wall hanger (included) or concealed arms support
- 0356.137 For wall hanger (included) or concealed arms support
  - Extra right-hand hole
- 0356.115 For wall hanger (included) or concealed arms support
  - Extra left-hand hole

**Nominal Dimensions:**  
521 x 464mm  
(20-1/2" x 18-1/4")

**Bowl sizes:**  
381mm (15") wide  
254mm (10") front to back  
165mm (6-1/2") deep

**Compliance Certifications - Meets or Exceeds the Following Specifications:**  
ASME A112.19.2 for Vitreous China Fixtures

© 2008 AS America Inc.

0356.028

0356.041

SEE REVERSE FOR ROUGHING-IN DIMENSIONS

**To Be Specified:**

- Color:  White  Bone  Silver
- Faucet:  Black  Linen
- Faucet Finish:  Chrome  Nickel  Stainless Steel
- Supply:  1/2" NPT
- Nipple:  1/2" NPT
- Bracket Support (by others):  Concealed Arms Support (by others):

\* See faucet section for additional models available

MEETS THE AMERICANS WITH DISABILITIES ACT GUIDELINES AND ANSI A117.1 ACCESSIBLE AND USABLE BUILDINGS AND FACILITIES - CHECK LOCAL CODES.

Top of front rim mounted 864mm (34") from finished floor.

M19 Revised 8/05

**American Standard**  
Style That Works Better

**LUCERNE™**  
WALL-HUNG LAVATORY  
VITREOUS CHINA

BARRIER FREE

**0356.015 8" CTRS FOR WALL HANGER OR CONCEALED ARMS**

**0356.037 8" CTRS FOR WALL HANGER OR CONCEALED ARMS EXTRA RIGHT HAND HOLE**

**0356.073 8" CTRS FOR WALL HANGER OR CONCEALED ARMS EXTRA LEFT HAND HOLE**

**0356.421 SINGLE CENTER HOLE FOR WALL HANGER OR CONCEALED ARMS**

**0356.137 SINGLE CENTER HOLE FOR WALL HANGER OR CONCEALED ARMS WITH EXTRA RIGHT HAND HOLE**

**0356.115 SINGLE CENTER HOLE FOR WALL HANGER OR CONCEALED ARMS WITH EXTRA LEFT HAND HOLE**

**NOTES:**  
\* DIMENSIONS SHOWN FOR LOCATION OF SUPPLIES AND "P" TRAP ARE SUGGESTED. PROVIDE SUITABLE REINFORCEMENT FOR ALL WALL SUPPORTS. FITTINGS NOT INCLUDED AND MUST BE ORDERED SEPARATELY. CONCEALED ARM SUPPORT AS REQUIRED TO BE FURNISHED BY OTHERS.

**IMPORTANT:** Dimensions of fixtures are nominal and may vary within the range of tolerances established by ANSI Standard A112.19.2. These measurements are subject to change or cancellation. No responsibility is assumed for use of superseded or voided pages.

**LAVATORY DESIGNED TO MEET ADA HANDICAPPED GUIDELINES WITH MOUNTING HEIGHT SET AT 864MM (34") ABOVE FINISHED FLOOR.**

© 2008 AS America Inc.

M20 Revised 8/05

**American Standard**  
Style That Works Better

**LUCERNE™**  
WALL-HUNG LAVATORY  
VITREOUS CHINA

BARRIER FREE

**0356.012 4" CTRS FOR WALL HANGER OR CONCEALED ARMS**

**0356.034 4" CTRS FOR WALL HANGER OR CONCEALED ARMS EXTRA RIGHT HAND HOLE**

**0356.056 4" CTRS FOR WALL HANGER OR CONCEALED ARMS EXTRA LEFT HAND HOLE**

**NOTES:**  
\* DIMENSIONS SHOWN FOR LOCATION OF SUPPLIES AND "P" TRAP ARE SUGGESTED. PROVIDE SUITABLE REINFORCEMENT FOR ALL WALL SUPPORTS. FITTINGS NOT INCLUDED AND MUST BE ORDERED SEPARATELY. CONCEALED ARM SUPPORT AS REQUIRED TO BE FURNISHED BY OTHERS.

**IMPORTANT:** Dimensions of fixtures are nominal and may vary within the range of tolerances established by ANSI Standard A112.19.2. These measurements are subject to change or cancellation. No responsibility is assumed for use of superseded or voided pages.

**LAVATORY DESIGNED TO MEET ADA HANDICAPPED GUIDELINES WITH MOUNTING HEIGHT SET AT 864MM (34") ABOVE FINISHED FLOOR.**

© 2008 AS America Inc.

M21 Revised 8/05

**American Standard**  
Style That Works Better

**LUCERNE™**  
WALL-HUNG LAVATORY  
VITREOUS CHINA

BARRIER FREE

**0356.421 SINGLE CENTER HOLE FOR WALL HANGER OR CONCEALED ARMS**

**0356.137 SINGLE CENTER HOLE FOR WALL HANGER OR CONCEALED ARMS WITH EXTRA RIGHT HAND HOLE**

**0356.115 SINGLE CENTER HOLE FOR WALL HANGER OR CONCEALED ARMS WITH EXTRA LEFT HAND HOLE**

**NOTES:**  
\* DIMENSIONS SHOWN FOR LOCATION OF SUPPLIES AND "P" TRAP ARE SUGGESTED. PROVIDE SUITABLE REINFORCEMENT FOR ALL WALL SUPPORTS. FITTINGS NOT INCLUDED AND MUST BE ORDERED SEPARATELY. CONCEALED ARM SUPPORT AS REQUIRED TO BE FURNISHED BY OTHERS.

**IMPORTANT:** Dimensions of fixtures are nominal and may vary within the range of tolerances established by ANSI Standard A112.19.2. These measurements are subject to change or cancellation. No responsibility is assumed for use of superseded or voided pages.

**LAVATORY DESIGNED TO MEET ADA HANDICAPPED GUIDELINES WITH MOUNTING HEIGHT SET AT 864MM (34") ABOVE FINISHED FLOOR.**

© 2008 AS America Inc.

M22 Revised 8/04

K. Harrington 11/7/22  
DRAWN BY: DATE:

K. Harrington Date  
CHECKED BY: DATE:

APPROVED BY: DATE:

APPROVED BY: DATE:

APPROVED BY: DATE:

APPROVED BY: DATE:



**MONTANA FISH, WILDLIFE & PARKS**

**Comfort Station Fixture Replacement Notes and Fixture Details**



SHEET: 5 of 6



**AFWALL® MILLENIUM™  
1.6 GPF FLUSHOMETER TOILET SYSTEM  
LESS EVERCLEAN®  
MANUAL FLUSH VALVE**

BARRIER FREE

**AFWALL® MILLENIUM™ 1.6 GPF  
FLUSHOMETER TOILET SYSTEM LESS EVERCLEAN®**

- 2859.016 1.6 gpf Exposed Top Spud Bowl and Manual Flush Valve

**BOWL:**

- Wall-mount elongated flushometer valve toilet
- Vitreous china
- High Efficiency. Operates in the range of 1.1 gpf to 1.6 gpf (4.2 Lpf to 6.0 Lpf)
- Conventional glaze
- Condensation channel
- Direct-fed siphon jet action
- 1-1/2" inlet spud
- Fully glazed 2-1/8" trapway
- 10" x 12" water surface area
- 100% factory flush tested
- Bolt caps and seat not included
- Model 2257.101

**MANUAL FLUSH VALVE:**

- Manual Piston-Type Water Closet Flush Valve for floor-mounted or wall-hung 1-1/2" top spud bowls
- Self-cleaning brass piston with integral wiper spring prevents clogging and reduces maintenance
- Piston operation delivers superior flush accuracy and repeatability
- Piston valve remains closed and does not need to be reset after loss of water pressure
- ADA compliant non-hold open handle provides automatic shut-off after every flush
- Positive seal ensures leak-free performance
- No external volume adjustment
- Durable chrome-plated cast brass construction is ideal for commercial applications
- Chloramine-resistant EPDM seals
- Adjustable tailpiece for rough-in flexibility
- Can be installed left or right handed
- Model 6047.161.002

**Includes:**

- 047007-0070A Inlet spud (furnished with bowl)
- 1" I.P.S. angle stop with back-flow prevention and vandal-resistant cap
- Sweat solder kit including cover tube and wall flange
- High back pressure vacuum breaker with down tube
- Spud coupling & flange for 1-1/2" top spud

**To Be Specified:**

- Color:  White
- Seat: 5901.100 American Standard Seat
- 5901.110 American Standard Seat with EverClean®
- Alternate Seat: 5905.100 Heavy Duty American Standard Seat
- 5905.110 Heavy Duty American Standard Seat with EverClean
- Carrier Fitting (by others):



SEE REVERSE FOR ROUGHING-IN DIMENSIONS

**System MaP® Score:**

- 1,000 grams of miso @ 1.6 gpf

\* Maximum Performance (MaP) testing performed by IAPMO R&T Lab. MaP Report conducted by Veritek Consulting, Inc. and Koeller and Company.

**Operating Pressure:**

25 psi (flowing) - 80 psi (static)

**Flow Requirement:**

25gpm (94.6 L/min.)

**Nominal Fixture Dimensions:**

660 x 356 x 381mm (26" x 14" x 15")

N129 © 2016 AS America Inc. spec\_2859.016 AFWall Millennium 1.6gpf Rev. A 6/16



**AFWALL® MILLENIUM™  
1.6 GPF FLUSHOMETER TOILET SYSTEM  
LESS EVERCLEAN®  
MANUAL FLUSH VALVE**

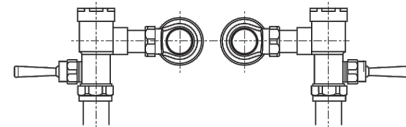
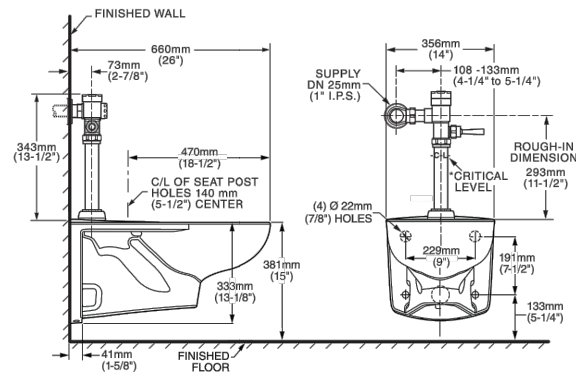
BARRIER FREE

**Fixture Compliance Certifications -  
Meets or Exceeds the Following  
Specifications:**

- ASME A112.19.2-2008 / CSA B45.1-08 for Vitreous China Fixtures

**Valve Listings:**

- ASSE 1037
- ANSI/ASME A112.19.2
- ADA Compliant



VALVE LEFT OR RIGHT HAND INSTALLATION



**MEETS THE AMERICANS WITH DISABILITIES ACT GUIDELINES AND ANSI A117.1 ACCESSIBLE AND USEABLE BUILDINGS AND FACILITIES - CHECK LOCAL CODES.**

- When installed so that top of seat is 432 to 483mm (17" to 19") from the finished floor.

**NOTES:**  
WASTE OUTLET SEAL RING MUST BE NEOPRENE OR GRAPHITE-FELT (WAX RING NOT RECOMMENDED).  
SUGGESTED 2mm (1/16") CLEARANCE BETWEEN FACE OF WALL AND BACK OF BOWL TO COMPLY WITH AREA CODE GOVERNING THE HEIGHT OF VACUUM BREAKER ON THE FLUSHOMETER VALVE, THE PLUMBER MUST VERIFY DIMENSIONS SHOWN FOR SUPPLY ROUGHING.  
CARRIER FITTING AS REQUIRED TO BE FURNISHED BY OTHERS.  
PROVIDE SUITABLE REINFORCEMENT FOR ALL WALL SUPPORT.

**IMPORTANT:** Dimensions of fixtures are nominal and may vary within the range of tolerances established by ANSI Standard A112.19.2. These measurements are subject to change or cancellation. No responsibility is assumed for use of superseded or voided pages.

PART OF LIXIL N130 © 2016 AS America Inc. spec\_2859.016 AFWall Millennium 1.6gpf Rev. A 6/16



**TRIMBROOK™  
URINAL  
VITREOUS CHINA**

BARRIER FREE

**TRIMBROOK™ 1.0 GPF SIPHON-JET URINAL**

- Vitreous china
- Low-consumption (3.8 Lpf/1.0 gpf)
- Flushing rim
- Siphon jet flush action
- Extended sides for privacy
- 3/4" inlet spud
- Outlet connection threaded 2" inside (NPTF)
- 2 wall hangers
- Fixture only
- Meets ANSI flush requirements at 1.0 GPF

- 6561.017 Top spud

**Nominal Dimensions:**

356 x 445 x 679mm (14" x 17-1/2" x 26-3/4")

Recommended working pressure – between 20 psi at valve when flushing and 80 psi static

**Compliance Certifications -  
Meets or Exceeds the Following Specifications:**

- ASME A112.19.2-2008/CSA B45.1-08 for Vitreous China Fixtures



**To Be Specified:**

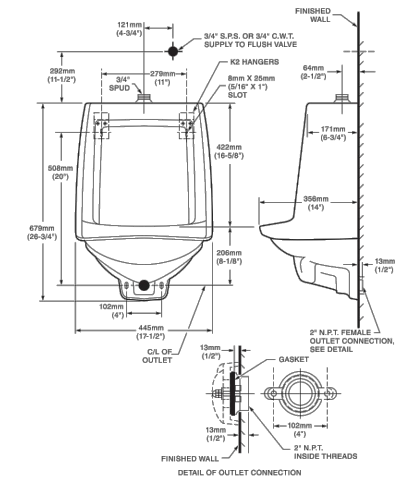
- Color:  White
- Flush Valve:
  - American Standard Selectronic® #6063.101.002 DC Power (Top Spud)
  - American Standard Manual #6045.101.002 (Top Spud)



**MEETS THE AMERICANS WITH DISABILITIES ACT GUIDELINES AND ANSI A117.1 ACCESSIBLE AND USEABLE BUILDINGS AND FACILITIES - CHECK LOCAL CODES.**

- When installed so top of rim is 432mm (17") from finished floor.

© 2014 AS America Inc.



**NOTES:**  
FLUSH VALVE NOT INCLUDED WITH FIXTURE AND MUST BE ORDERED SEPARATELY.  
PROVIDE SUITABLE REINFORCEMENT FOR ALL WALL SUPPORTS.  
**IMPORTANT:** Dimensions of fixtures are nominal and may vary within the range of tolerances established by ANSI Standard A112.19.2. These measurements are subject to change or cancellation. No responsibility is assumed for use of superseded or voided pages.

M128 Revised 5/14

K. Harrington 11/7/22  
DRAWN BY: DATE:  
K. Harrington Date  
CHECKED BY: DATE:

APPROVED BY: DATE:  
APPROVED BY: DATE:

APPROVED BY: DATE:  
APPROVED BY: DATE:



**MONTANA FISH,  
WILDLIFE & PARKS**

**Comfort Station Fixture Replacement  
Fixture Details**



SHEET: 6 of 6