

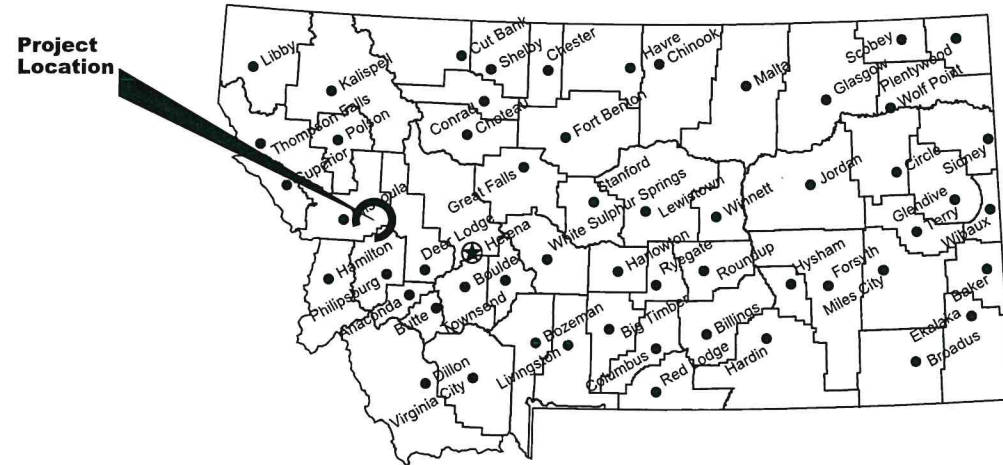
Montana Fish, Wildlife & Parks

Salmon and Placid State Park Entry Stations

New Entry Stations

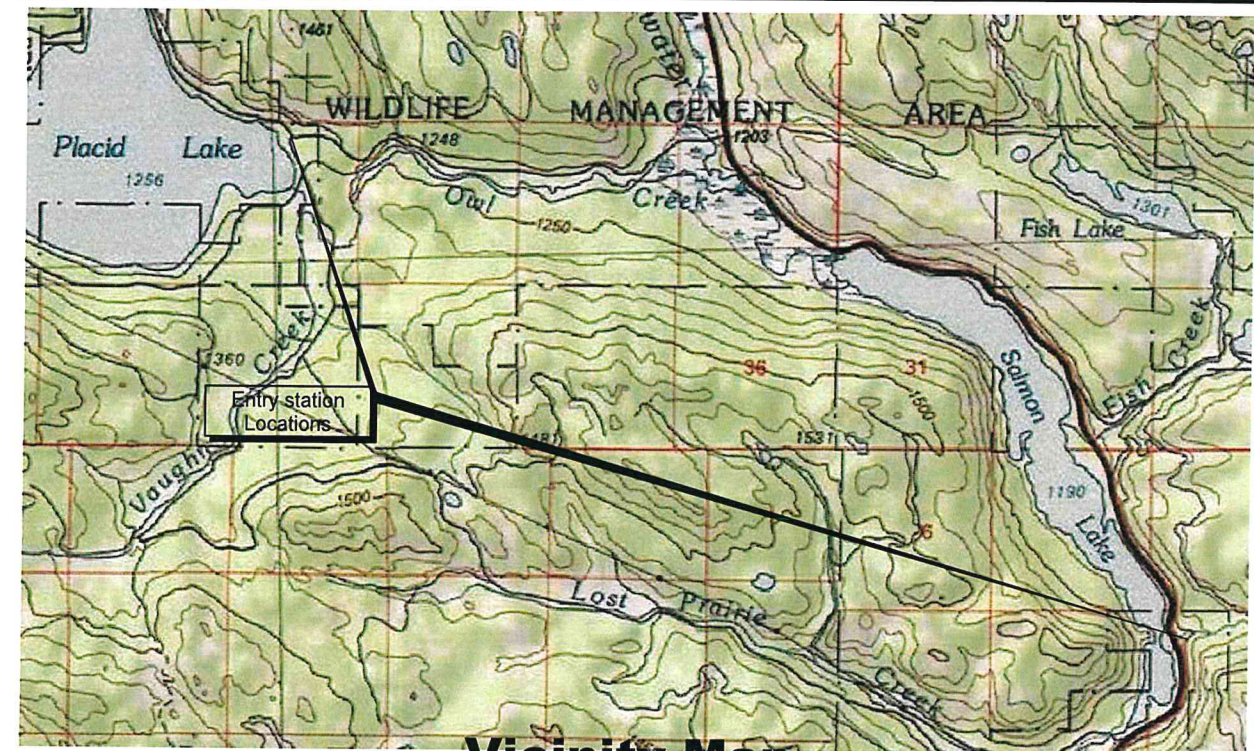
Seeley Lake, Montana

FWP Project No. 7196143



Location Map

No Scale



Vicinity Map

No Scale

North



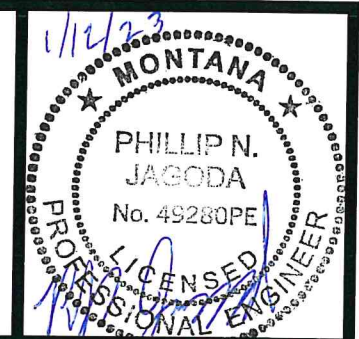
**MONTANA FISH, WILDLIFE AND PARKS
DESIGN AND CONSTRUCTION**

MAILING ADDRESS: PO BOX 200701
HELENA, MT 59620-0701
TEL 406.841.4000
FAX 406.841.4004
fwp.mt.gov/Doing Business/Design&Construction

PHYSICAL ADDRESS: 1522 9th AVENUE
HELENA, MT 59601

DRAWING INDEX

Sheet	Description
1	Cover
2	Site plans Placid and Salmon
3	Demo plan
4	Plan views
5	Placid Elevation Drawings
6	Salmon Elevation



Kevin Harrington Nov. 15, 2022
DRAWN BY: DATE:

Kevin Harrington Nov. 15, 2022
CHECKED BY: DATE:

APPROVED BY: DATE:

APPROVED BY: DATE:

APPROVED BY: DATE:

APPROVED BY: DATE:



**MONTANA FISH,
WILDLIFE & PARKS**

114

New Entry Stations
Cover Sheet



SHEET: 1 of 5



K.Harrington 11/15/22
 DRAWN BY: DATE:
 K. Harrington 11/15/22
 CHECKED BY: DATE:

APPROVED BY: DATE:
 APPROVED BY: DATE:

APPROVED BY: DATE:
 APPROVED BY: DATE:



**MONTANA FISH,
 WILDLIFE & PARKS**

115

**New Entry Stations
 Site Plan**



SHEET: 2
 of 6

SALMON DAY USE, PLACID EXISTING ENTRY DEMOLITION:

1. BUILDING DEMOLITION SCHEDULING WITH FWP FRENCH TOWN STATE PARK MANAGEMENT AND PROJECT MANAGER.
2. DEMOLITION WASTE TO BE HAULED TO APPROVED SOLID WASTE FACILITY.
3. OBTAIN ALL PERMITS NECESSARY FOR DEMOLITION WORK.
4. TRAFFIC CONTROL TO BE MAINTAINED AT ALL TIMES BY CONTRACTOR. CONSTRUCTION SAFETY FENCE TO BE INSTALLED DURING NON WORKING HOURS
5. DEMOLITION ITEM REMOVED IF ADDITIVE ALTERNATE #1 IF ADDITIVE ALTERNATE AWARDED

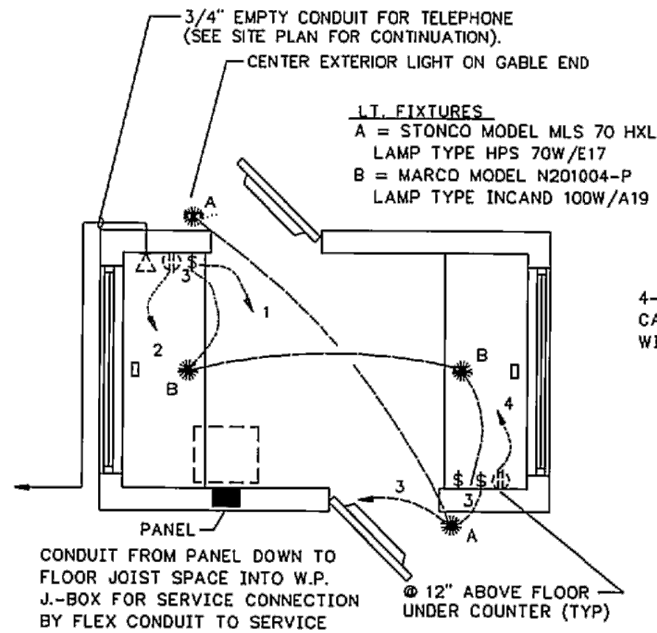


SALMON DAY USE ENTRY

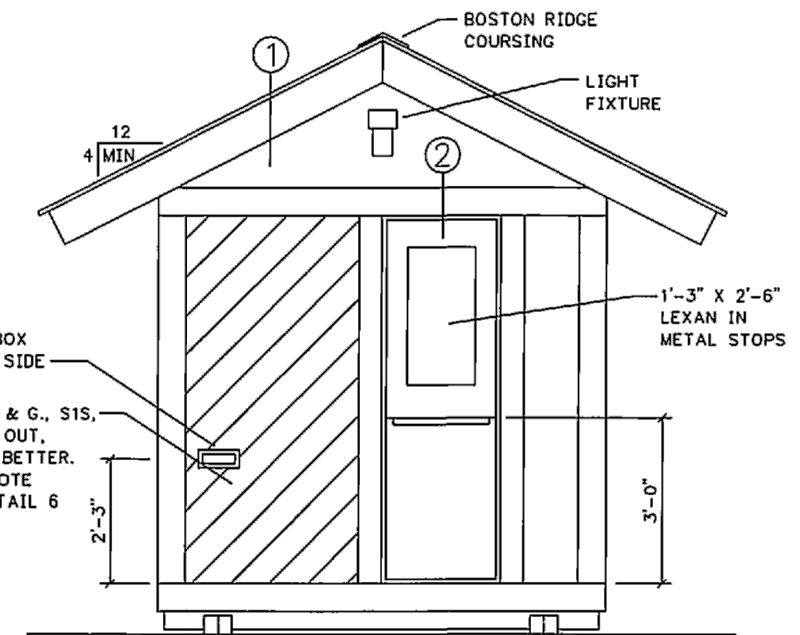
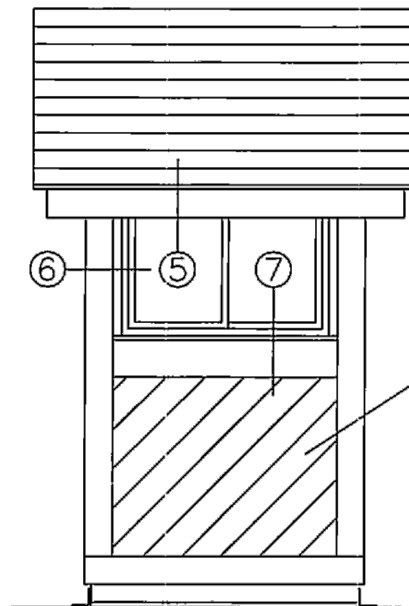
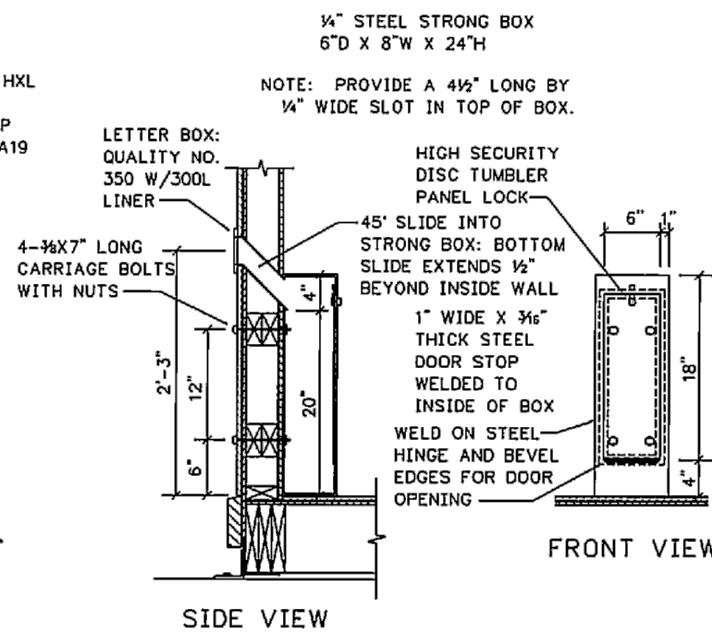


PLACID ENTRY STATION

SALMON DAY USE ENTRY



ELECT. PLAN (NTS)



8 1/2" = 1'-0"

K.Harrington 11/15/22
 DRAWN BY: DATE:

K. Harrington 11/15/22
 CHECKED BY: DATE:

APPROVED BY: DATE:

APPROVED BY: DATE:

APPROVED BY: DATE:

APPROVED BY: DATE:



MONTANA FISH, WILDLIFE & PARKS

116

Existing Entry Station Demolition Plan
Demolition Plan



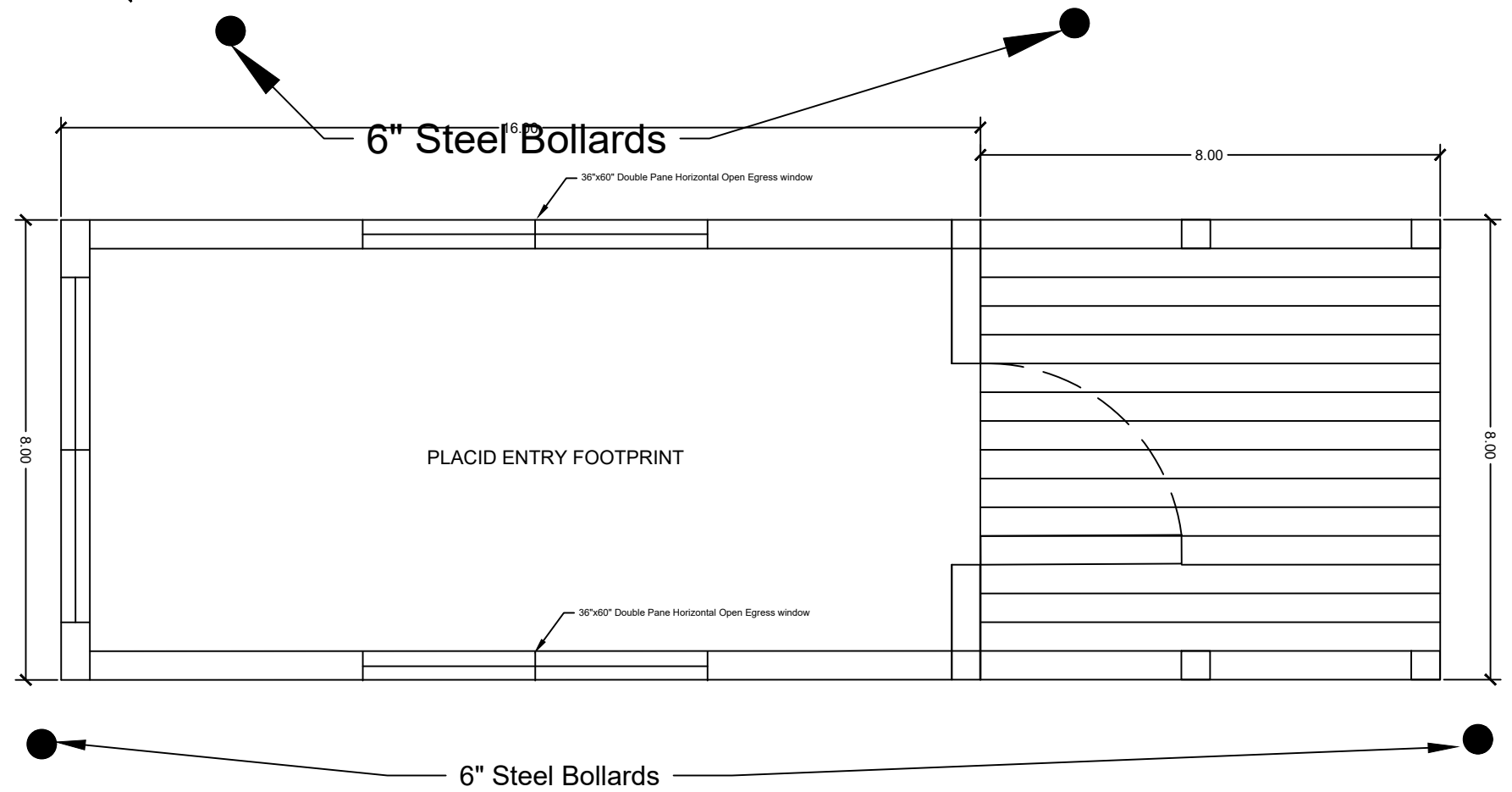
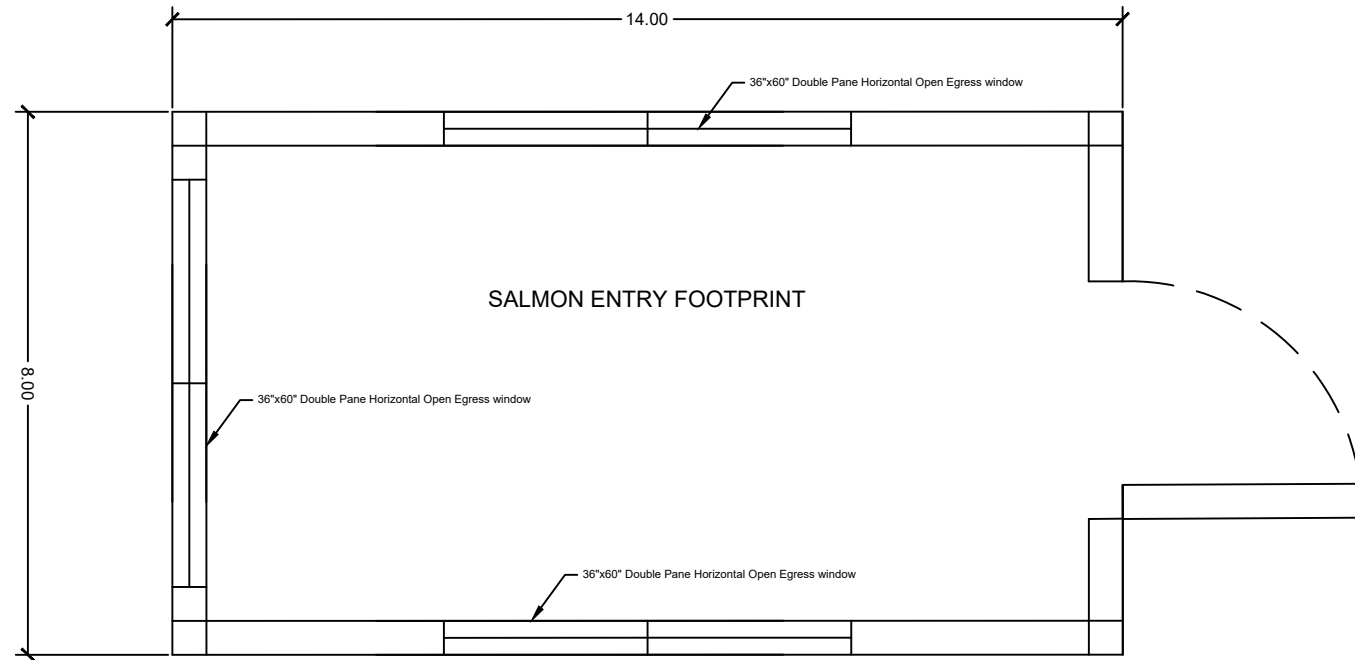
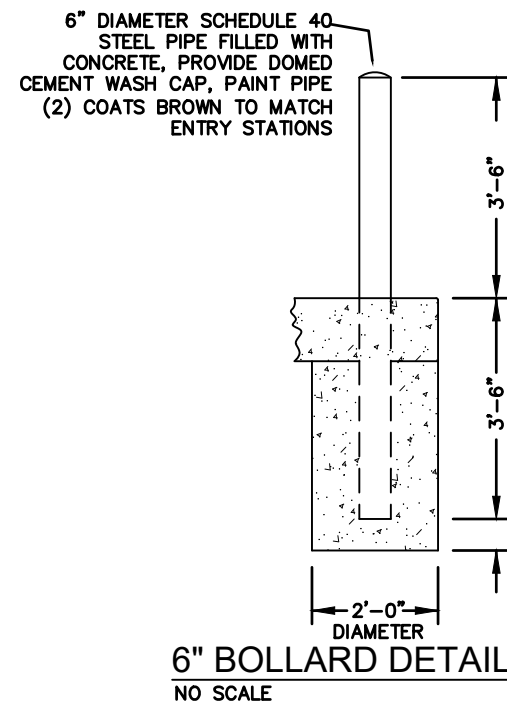
SHEET: 3 of 6

GENERAL NOTES:

1. CONFIRM DIMENSIONS AND LAYOUT FOR QUANTIFYING MATERIALS. SLOPE FACTOR, WASTE, AND OVERLAP IS INCIDENTAL TO THE PROJECT.
2. PROVIDE SUBMITTAL FOR ALL MATERIALS TO OWNER FOR APPROVAL PRIOR TO PROCUREMENT.
3. OBTAIN ALL PERMITS NECESSARY FOR WORK.
4. CONDUCT WORK MONDAY THROUGH FRIDAY, 8:00AM TO 5:00 PM. ADDITIONAL HOURS AND WEEKEND WORK IS SUBJECT TO OWNER APPROVAL.
5. STAGING OF ALL EQUIPMENT AND MATERIALS MUST BE ON STATE PROPERTY OR OTHERWISE ARRANGED BY CONTRACTOR PRIVATELY. MATERIALS STORAGE LOCATION MUST BE APPROVED BY PROJECT MANAGER FOR PAYMENT APPROVAL.
6. PROVIDE DUMPSTERS AND PORTABLE BATHROOM FACILITIES FOR CONTRACTOR USE. ALL REFUSE, REMNANTS, FASTENERS, ETC. MUST BE CLEANED UP AND IS SUBJECT TO OWNER APPROVAL PRIOR TO FINAL PAYMENT.
7. SURROUNDINGS MUST BE LEFT IN PRE-CONSTRUCTION CONDITION.

ITEMS TO BE IN BUILDING PACKAGE:

1. METAL ROOFING
2. FULLY INSULATED AND SHEET ROCKED FOR FOUR SEASON USE. WIRED FOR ELECTRICAL, 100-AMP BREAKER, MINIMUM OF FOUR OUTLETS OR CODE WHICHEVER IS GREATER.
3. WIRING SHOULD INCLUDE INTERNET/PHONE LINE CAPABILITY.
4. OBTAIN ALL PERMITS NECESSARY FOR WORK.
5. WALL MOUNTED ELECTRICAL HEATER AND AC UNIT.
6. ADDITIONAL WIRING TO BE INCLUDED TO SMALL WINDOWS WITHIN PARK ENTRY DORMER FOR SECURITY SYSTEM. DATE TBD
7. THE ENTRY STATION PROVIDED TO BE MONTANA SHED CENTER PRESTIGE BEAR PAW MODEL WITH $\frac{7}{2}$ PITCH ROOF, INCLUDING GABLES AS SHOWN IN PLANS OR APPROVED EQUAL AS DETERMINED BY THE PROJECT MANAGER.



K.Harrington 11/15/22
DRAWN BY: DATE:

K. Harrington 11/15/22
CHECKED BY: DATE:

APPROVED BY: DATE:

APPROVED BY: DATE:

APPROVED BY: DATE:

APPROVED BY: DATE:



MONTANA FISH, WILDLIFE & PARKS

New Entry Stations
Plan View

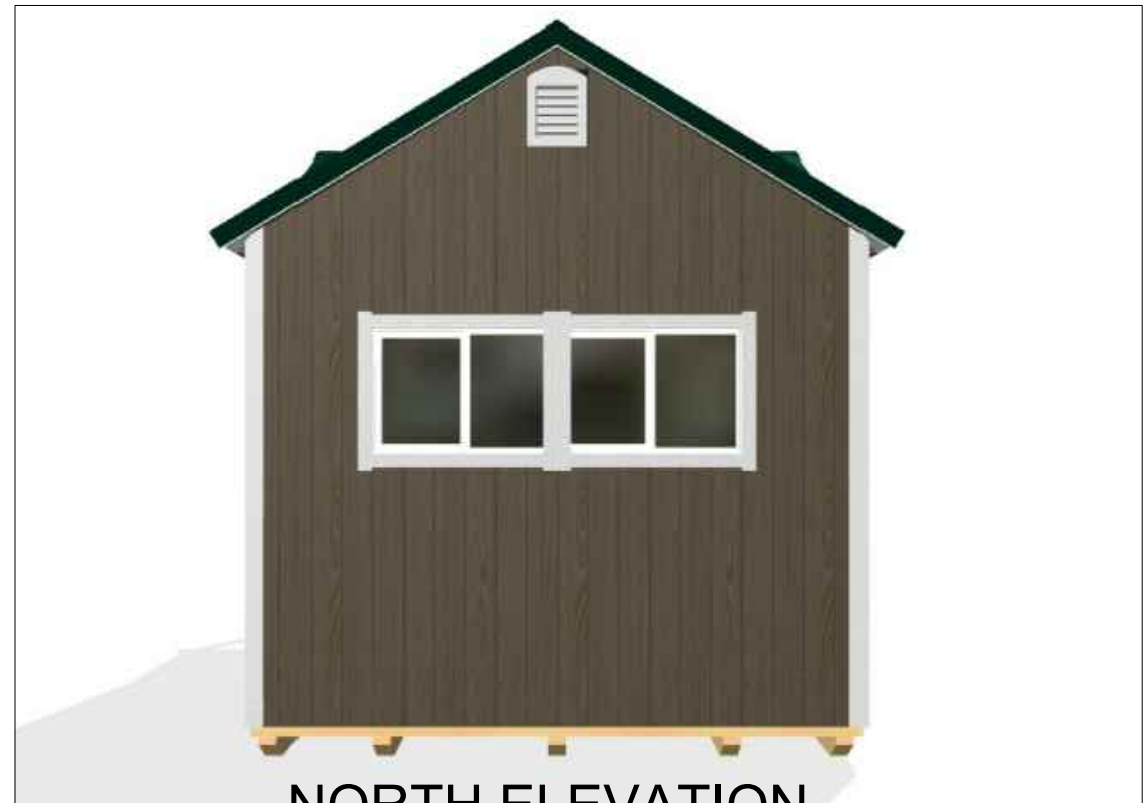


SHEET: 4 of 6



SOUTH ELEVATION

NO CENTER COLUMN



NORTH ELEVATION

THE ENTRY STATION PROVIDED TO BE MONTANA SHED CENTER PRESTIGE BEAR PAW MODEL WITH 7/12 PITCH ROOF, INCLUDING GABLES AS SHOWN IN PLANS OR APPROVED EQUAL AS DETERMINED BY THE PROJECT MANAGER.



WEST ELEVATION

NO CENTER COLUMN



EAST ELEVATION

NO CENTER COLUMN

K.Harrington 11/15/22
 DRAWN BY: DATE:
 K. Harrington 11/15/22
 CHECKED BY: DATE:

APPROVED BY: DATE:
 APPROVED BY: DATE:

APPROVED BY: DATE:
 APPROVED BY: DATE:



**MONTANA FISH,
 WILDLIFE & PARKS**

118

Placid Entry Station Entry Station
 Building Elevation Views



SHEET: 5
 of 6



North Elevation



West Elevation

THE ENTRY STATION PROVIDED TO BE MONTANA SHED CENTER PRESTIGE BEAR PAW MODEL WITH 7/12 PITCH ROOF, INCLUDING GABLES AS SHOWN IN PLANS OR APPROVED EQUAL AS DETERMINED BY THE PROJECT MANAGER.



South Elevation



East Elevation

K.Harrington 11/15/22
DRAWN BY: DATE:
K. Harrington 11/15/22
CHECKED BY: DATE:

APPROVED BY: DATE:
APPROVED BY: DATE:

APPROVED BY: DATE:
APPROVED BY: DATE:



**MONTANA FISH,
WILDLIFE & PARKS**

119

Salmon State Park Day Use Entry Station
Building Elevation Views



SHEET: 6
of 6