

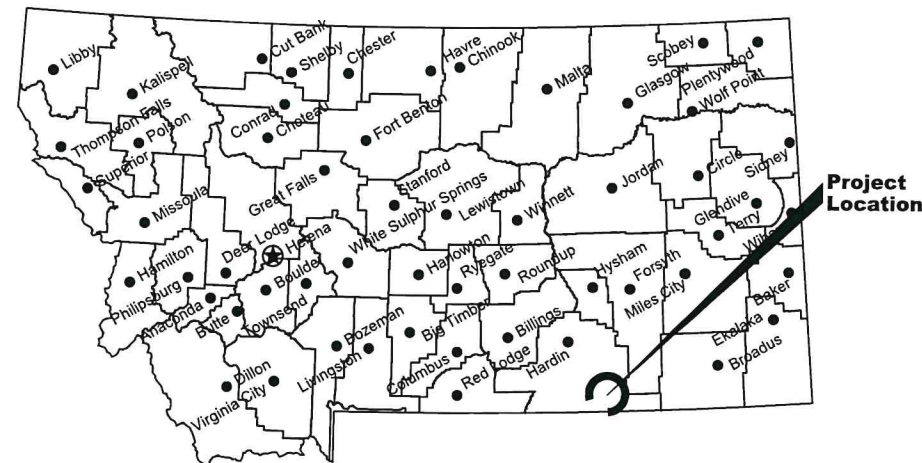
Montana Fish, Wildlife & Parks

Tongue River State Park

Shoulder Gravel and Chip Seal

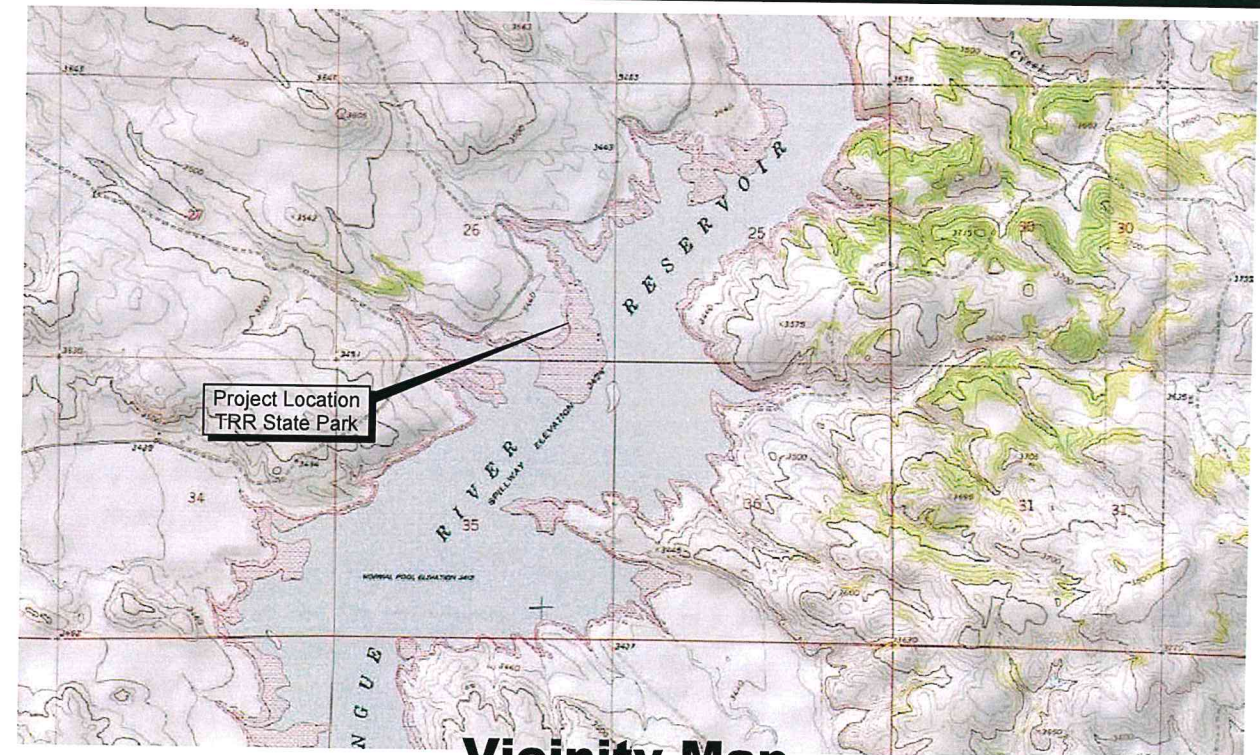
Big Horn County, Montana

FWP Project No. 7216320



Location Map

No Scale



Vicinity Map

No Scale



**MONTANA FISH, WILDLIFE AND PARKS
DESIGN AND CONSTRUCTION**

MAILING ADDRESS: PO BOX 200701
HELENA, MT 59620-0701
TEL 406.841.4000
FAX 406.841.4004
fwp.mt.gov/Doing Business/Design&Construction

PHYSICAL ADDRESS: 1522 9th AVENUE
HELENA, MT 59601

DRAWING INDEX

Sheet	Description	Sheet	Description
1	Cover	7	Concession Parking lot
2	Overall Site Plan	8	Campsites 9-15
3	Access Road Sta. 0+00 to 7+92	9	Campsites 16-22,34-40
4	Access Road Sta. 7+92 to 15+84	10	Campsites 23-34
5	Access Road Sta. 15+84 to 17+31		
6	Parking lot and Boat Ramp		



K. Harrington
DRAWN BY: DATE: January 19, 2023

APPROVED BY: DATE: _____

APPROVED BY: DATE: _____



**MONTANA FISH,
WILDLIFE & PARKS**

110

TRR Shoulder Gravel and Crack Seal
Cover Sheet



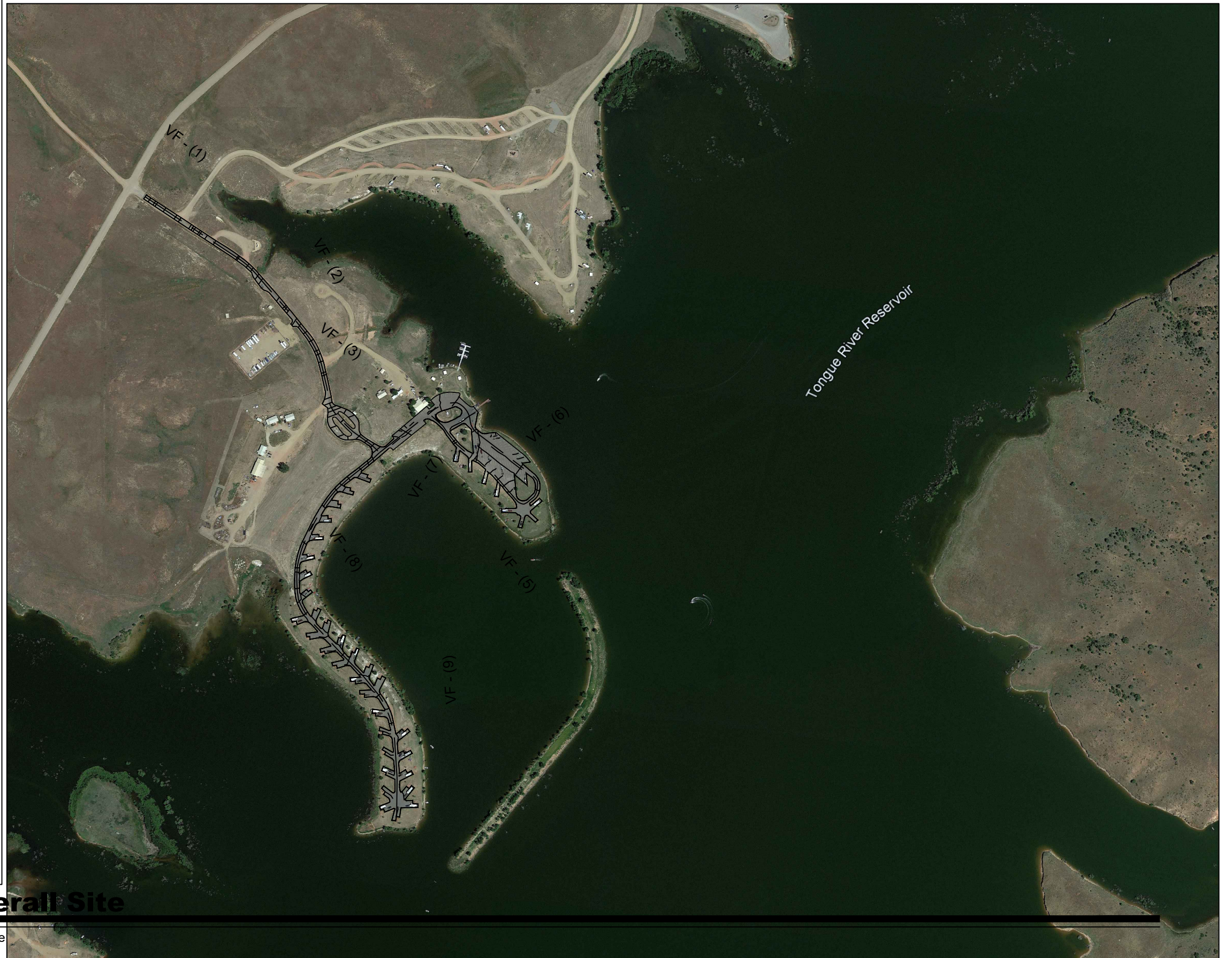
SHEET: 1 of 10

GENERAL NOTES:

1. PROVIDE SUBMITTAL FOR ALL MATERIALS TO OWNER FOR APPROVAL PRIOR TO PROCUREMENT.
2. OBTAIN ALL PERMITS NECESSARY FOR WORK.
3. CONDUCT WORK MONDAY THROUGH FRIDAY, 8:00AM TO 5:00 PM. ADDITIONAL HOURS AND WEEKEND WORK IS SUBJECT TO OWNER APPROVAL.
4. STAGING OF ALL EQUIPMENT AND MATERIALS MUST BE ON STATE PROPERTY OR OTHERWISE ARRANGED BY CONTRACTOR PRIVATELY. MATERIALS STORAGE LOCATION MUST BE APPROVED BY PROJECT MANAGER FOR PAYMENT APPROVAL.
5. PROVIDE DUMPSTERS AND PORTABLE BATHROOM FACILITIES FOR CONTRACTOR USE.
6. SURROUNDINGS MUST BE LEFT IN PRE-CONSTRUCTION CONDITION.

PROJECT NOTES:

1. FOLLOW ALL SEALING MANUFACTURER'S HANDLING, MIXING, AND APPLICATION REQUIREMENTS.
2. ALL CLEANING, DRYING, BACKER RODS, AND ROUTING OF CRACKS INCIDENTAL TO THE CRACK SEAL BID ITEM.
3. REMOVAL OF ANY LOOSE OR EXCESS SEALANT FROM PREVIOUS PROJECT.
4. NEW SHOULDER GRAVEL SHOULD BE TAMPED OR WHEEL ROLLED AND ADJACENT AREA RAKED TO PREVENT DAMAGE TO MAINTENANCE EQUIPMENT.
5. ALL TRAFFIC CONTROL IS INCIDENTAL TO THE PROJECT.
6. CAMPING IS AVAILABLE FOR CREWS AT THE STANDARD RATE DEPENDING ON AVAILABILITY.



Scale: 1" = 20'



Overall Site

No Scale

K. Harrington 2/19/23
DRAWN BY: DATE:

APPROVED BY: DATE:

APPROVED BY: DATE:

K. Harrington 2/19/24
CHECKED BY: DATE:

APPROVED BY: DATE:

APPROVED BY: DATE:



**MONTANA FISH,
WILDLIFE & PARKS**

111

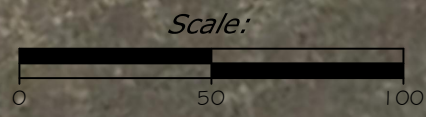
**TRR Shoulder Gravel and Crack Seal
Site Plan**



SHEET: 2
of 10

PROJECT NOTES:

1. LOCATIONS AND LINEAR CRACK QUANTITIES ARE APPROXIMATE AND SHOULD BE FIELD VERIFIED PRIOR TO BID DATE. THIS INCLUDES BACKER ROD QUANTITY.
2. PARTIAL ACCESS TO BE MAINTAINED AT ALL TIMES AS THE PARK WILL BE OPEN DURING WORK HOURS TO ALLOW GUESTS TO STAFF ACCESS AS NEEDED.



K. Harrington 1/19/23
 DRAWN BY: DATE:
 K. Harrington 1/24/23
 CHECKED BY: DATE:

REVISED BY: DATE:
 APPROVED BY: DATE:

APPROVED BY: DATE:
 APPROVED BY: DATE:



**MONTANA FISH,
 WILDLIFE & PARKS**

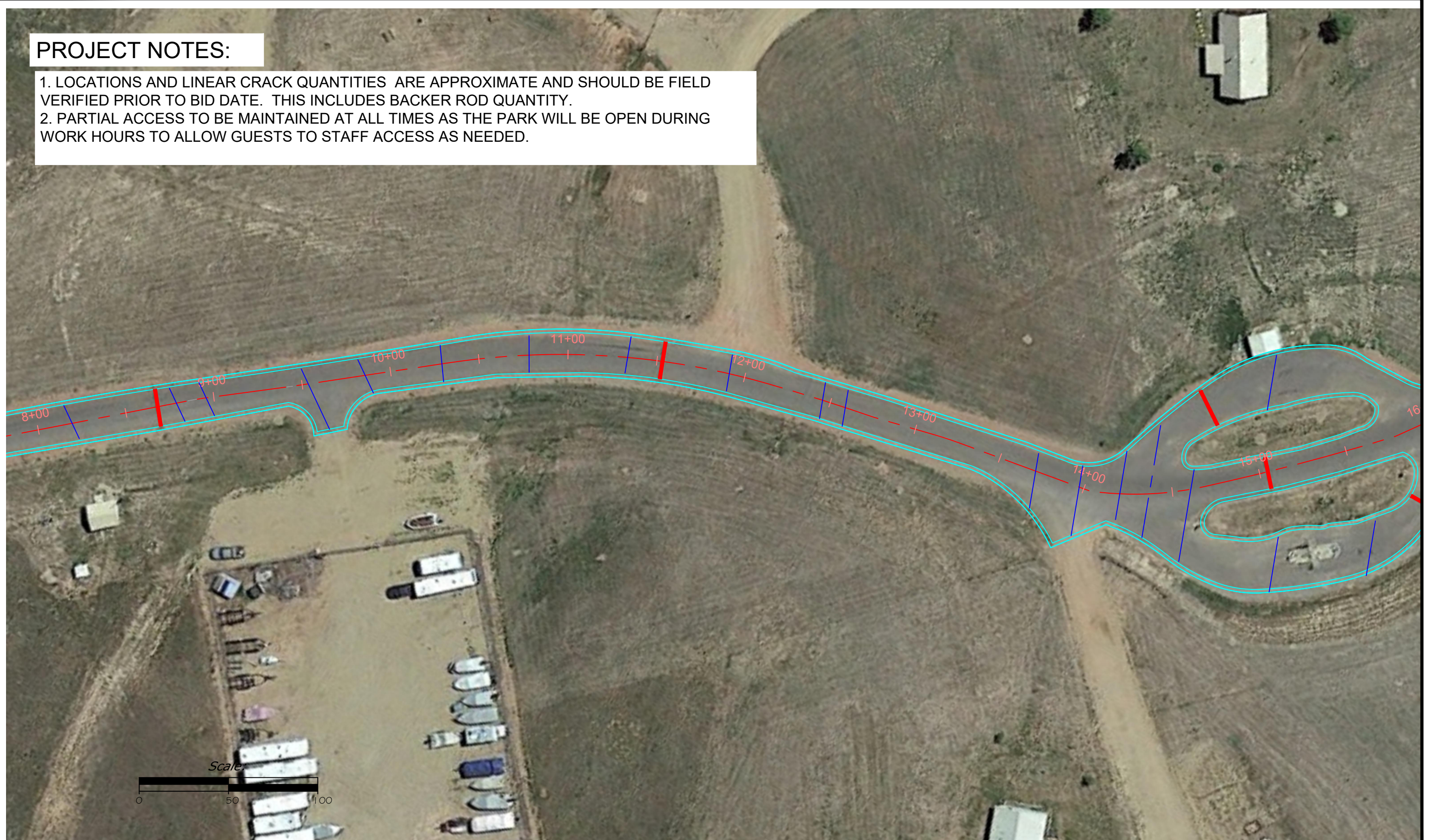
TRR Shoulder Gravel and Crack Seal
 Access Road Station 0+00 to 7+92



SHEET: 3 of 10

PROJECT NOTES:

1. LOCATIONS AND LINEAR CRACK QUANTITIES ARE APPROXIMATE AND SHOULD BE FIELD VERIFIED PRIOR TO BID DATE. THIS INCLUDES BACKER ROD QUANTITY.
2. PARTIAL ACCESS TO BE MAINTAINED AT ALL TIMES AS THE PARK WILL BE OPEN DURING WORK HOURS TO ALLOW GUESTS TO STAFF ACCESS AS NEEDED.



K.Harrington 1/19/23
 DRAWN BY: DATE:
 K.Harrington 1/19/23
 CHECKED BY: DATE:

REVISD BY: DATE:
 APPROVED BY: DATE:

APPROVED BY: DATE:
 APPROVED BY: DATE:



**MONTANA FISH,
 WILDLIFE & PARKS**

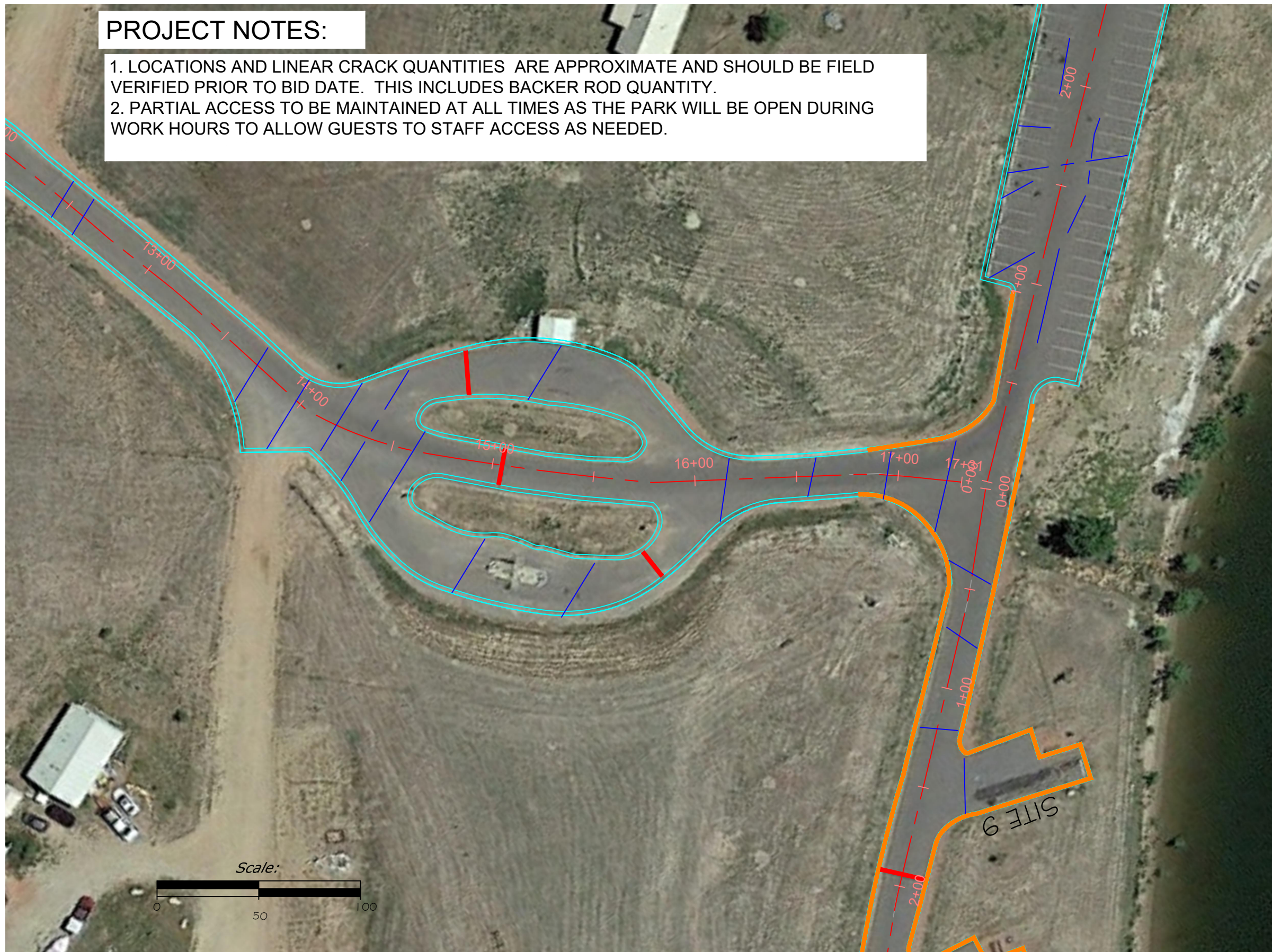
TRR Shoulder Gravel and Crack Seal
 Access Road Station 7+92 to 15+84



SHEET: 4
 of 10

PROJECT NOTES:

1. LOCATIONS AND LINEAR CRACK QUANTITIES ARE APPROXIMATE AND SHOULD BE FIELD VERIFIED PRIOR TO BID DATE. THIS INCLUDES BACKER ROD QUANTITY.
2. PARTIAL ACCESS TO BE MAINTAINED AT ALL TIMES AS THE PARK WILL BE OPEN DURING WORK HOURS TO ALLOW GUESTS TO STAFF ACCESS AS NEEDED.



PROJECT LEGEND

Shoulder Gravel Locations	
Existing cracks <small>Locations approximate</small>	
Asphalt Edge	
Speed Bumps	

K. Harrington 1/19/23
 DRAWN BY: DATE:
 K. Harrington 1/19/23
 CHECKED BY: DATE:

REVISED BY: DATE:
 APPROVED BY: DATE:

APPROVED BY: DATE:
 APPROVED BY: DATE:



**MONTANA FISH,
 WILDLIFE & PARKS**

TRR Shoulder Gravel and Chip Seal
 Access Road 15+84 to 17+31



SHEET:

5
 of
 10