

PROJECT LEGEND

Shoulder Gravel Locations	
Existing cracks <small>*locations approximate</small>	
Asphalt Edge	
Speed Bumps	

PROJECT NOTES:

1. LOCATIONS AND LINEAR CRACK QUANTITIES ARE APPROXIMATE AND SHOULD BE FIELD VERIFIED PRIOR TO BID DATE. THIS INCLUDES BACKER ROD QUANTITY.
2. PARTIAL ACCESS TO BE MAINTAINED AT ALL TIMES AS THE PARK WILL BE OPEN DURING WORK HOURS TO ALLOW GUESTS TO STAFF ACCESS AS NEEDED.

K. Harrington 1/24/23
 DRAWN BY: DATE:
 K. Harrington 1/24/23
 CHECKED BY: DATE:

REVISED BY: DATE:
 APPROVED BY: DATE:

APPROVED BY: DATE:
 APPROVED BY: DATE:



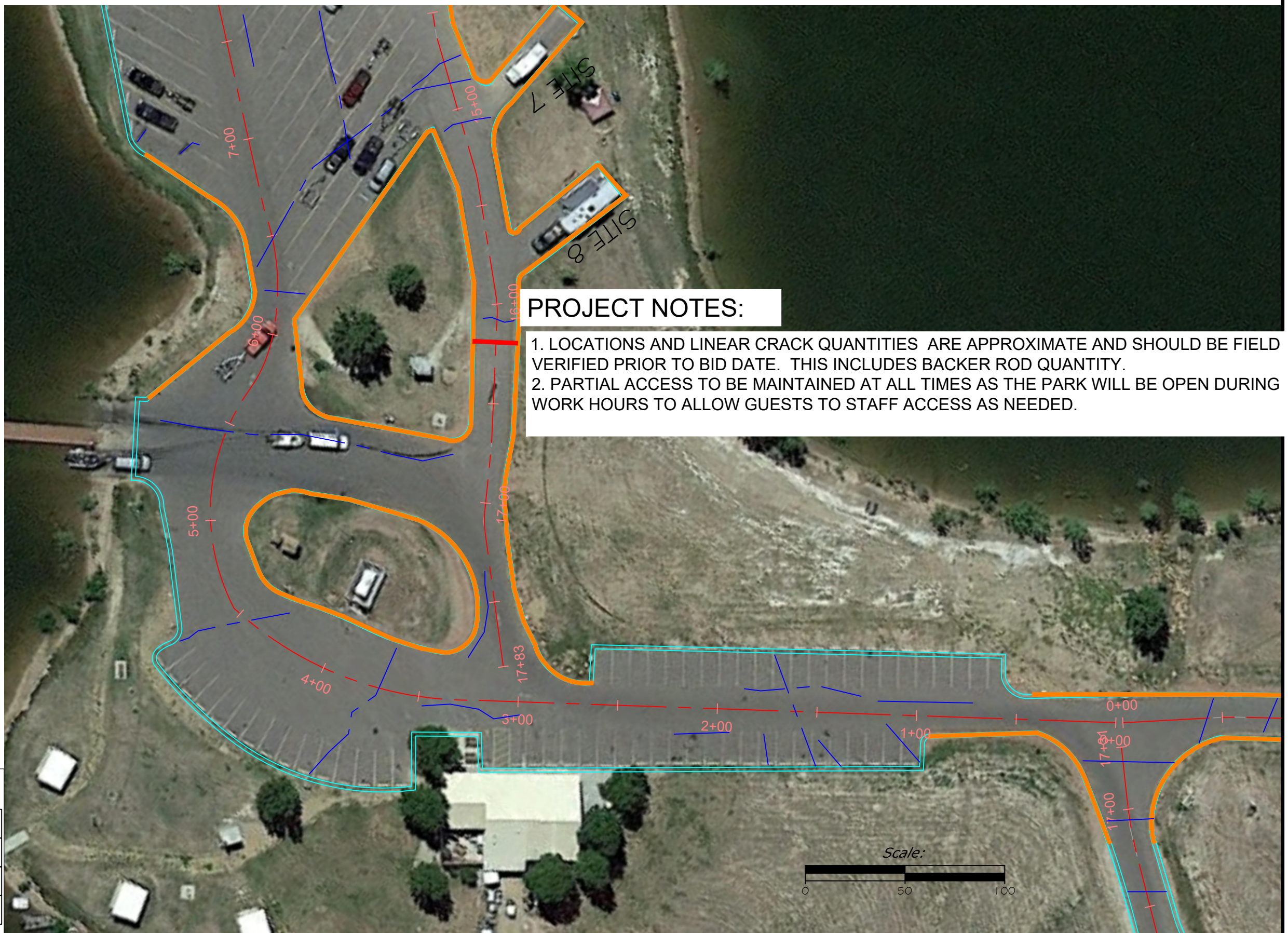
**MONTANA FISH,
 WILDLIFE & PARKS**

115

TRR Shoulder Gravel and Crack Seal
 Parking lot and Ramp



SHEET: 6 of 10



PROJECT NOTES:

1. LOCATIONS AND LINEAR CRACK QUANTITIES ARE APPROXIMATE AND SHOULD BE FIELD VERIFIED PRIOR TO BID DATE. THIS INCLUDES BACKER ROD QUANTITY.
2. PARTIAL ACCESS TO BE MAINTAINED AT ALL TIMES AS THE PARK WILL BE OPEN DURING WORK HOURS TO ALLOW GUESTS TO STAFF ACCESS AS NEEDED.

PROJECT LEGEND

Shoulder Gravel Locations	
Existing cracks <small>*locations approximate</small>	
Asphalt Edge	
Speed Bumps	

K.Harrington 1/19/23
 DRAWN BY: DATE:
 K.Harrington 1/19/23
 CHECKED BY: DATE:

REVISED BY: DATE:
 APPROVED BY: DATE:





APPROVED BY: DATE:
 APPROVED BY: DATE:



TRR Shoulder Gravel and Crack Seal
 Concession Lot and Boat Ramp

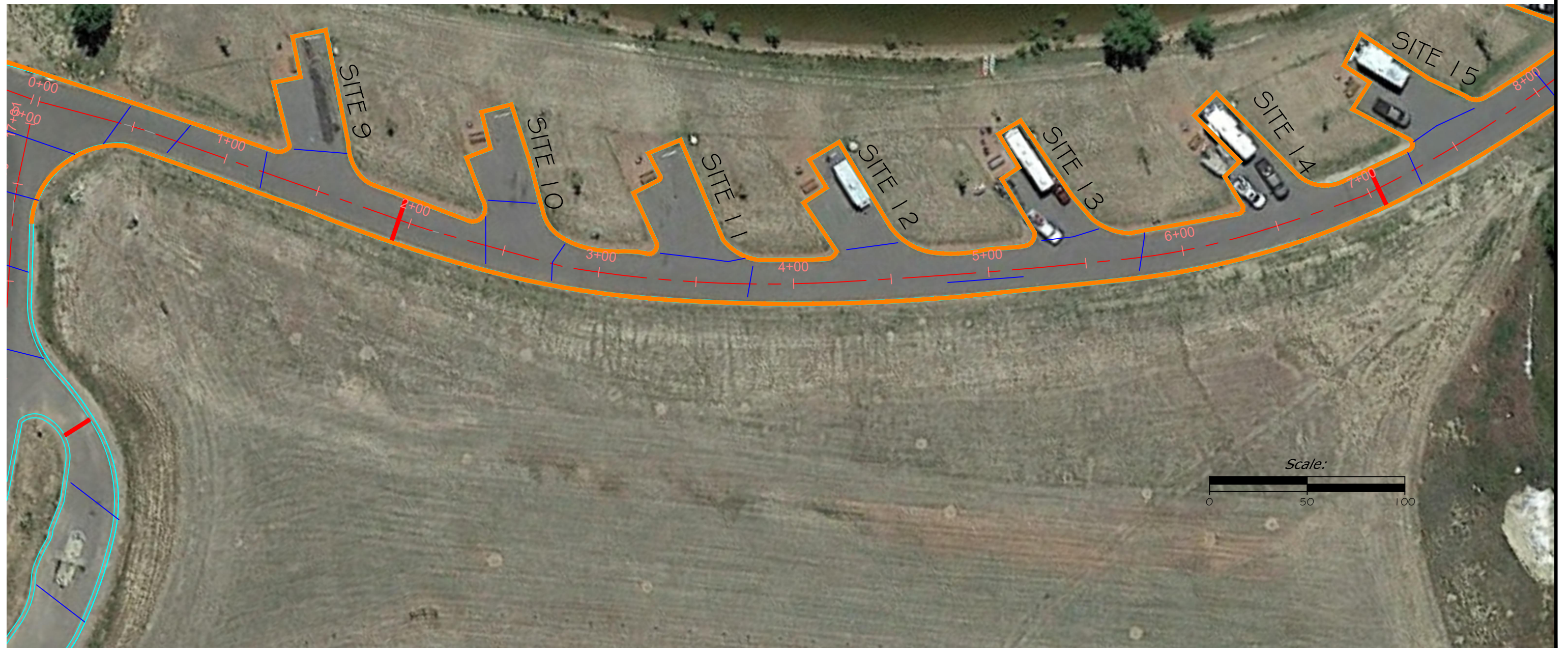


PROJECT LEGEND

Shoulder Gravel Locations	
Existing cracks <small>*locations approximate</small>	
Asphalt Edge	
Speed Bumps	

PROJECT NOTES:

1. LOCATIONS AND LINEAR CRACK QUANTITIES ARE APPROXIMATE AND SHOULD BE FIELD VERIFIED PRIOR TO BID DATE. THIS INCLUDES BACKER ROD QUANTITY.
2. PARTIAL ACCESS TO BE MAINTAINED AT ALL TIMES AS THE PARK WILL BE OPEN DURING WORK HOURS TO ALLOW GUESTS AND STAFF ACCESS AS NEEDED.



K. Harrington 1/19/23
 DRAWN BY: DATE:
 K. Harrington 1/19/23
 CHECKED BY: DATE:

REVISED BY: DATE:
 APPROVED BY: DATE:

APPROVED BY: DATE:
 APPROVED BY: DATE:



**MONTANA FISH,
 WILDLIFE & PARKS**

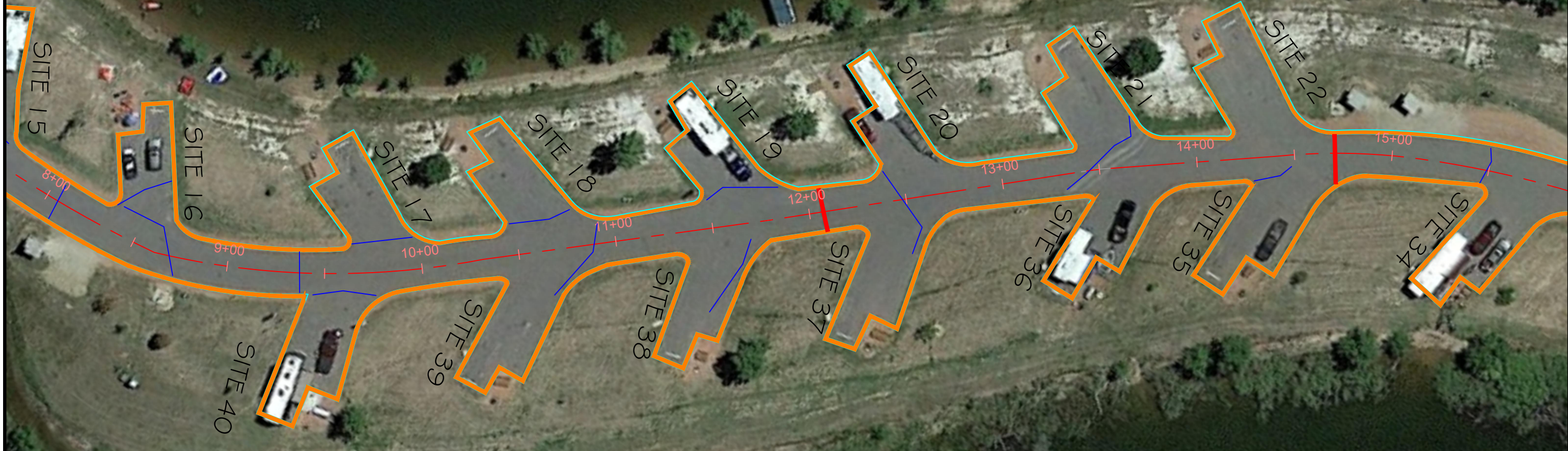
TRR Shoulder Gravel and Crack Seal
 Sites 9-15



SHEET: 8 of 10

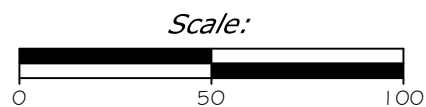
PROJECT NOTES:

1. LOCATIONS AND LINEAR CRACK QUANTITIES ARE APPROXIMATE AND SHOULD BE FIELD VERIFIED PRIOR TO BID DATE. THIS INCLUDES BACKER ROD QUANTITY.
2. PARTIAL ACCESS TO BE MAINTAINED AT ALL TIMES AS THE PARK WILL BE OPEN DURING WORK HOURS TO ALLOW GUESTS AND STAFF ACCESS AS NEEDED.



PROJECT LEGEND

Shoulder Gravel Locations	
Existing cracks <small>*locations approximate</small>	
Asphalt Edge	
Speed Bumps	



K.Harrington 1/19/23
 DRAWN BY: DATE:
 K. Harrington 1/19/23
 CHECKED BY: DATE:

REVISED BY: DATE:
 APPROVED BY: DATE:

APPROVED BY: DATE:
 APPROVED BY: DATE:



**MONTANA FISH,
 WILDLIFE & PARKS**

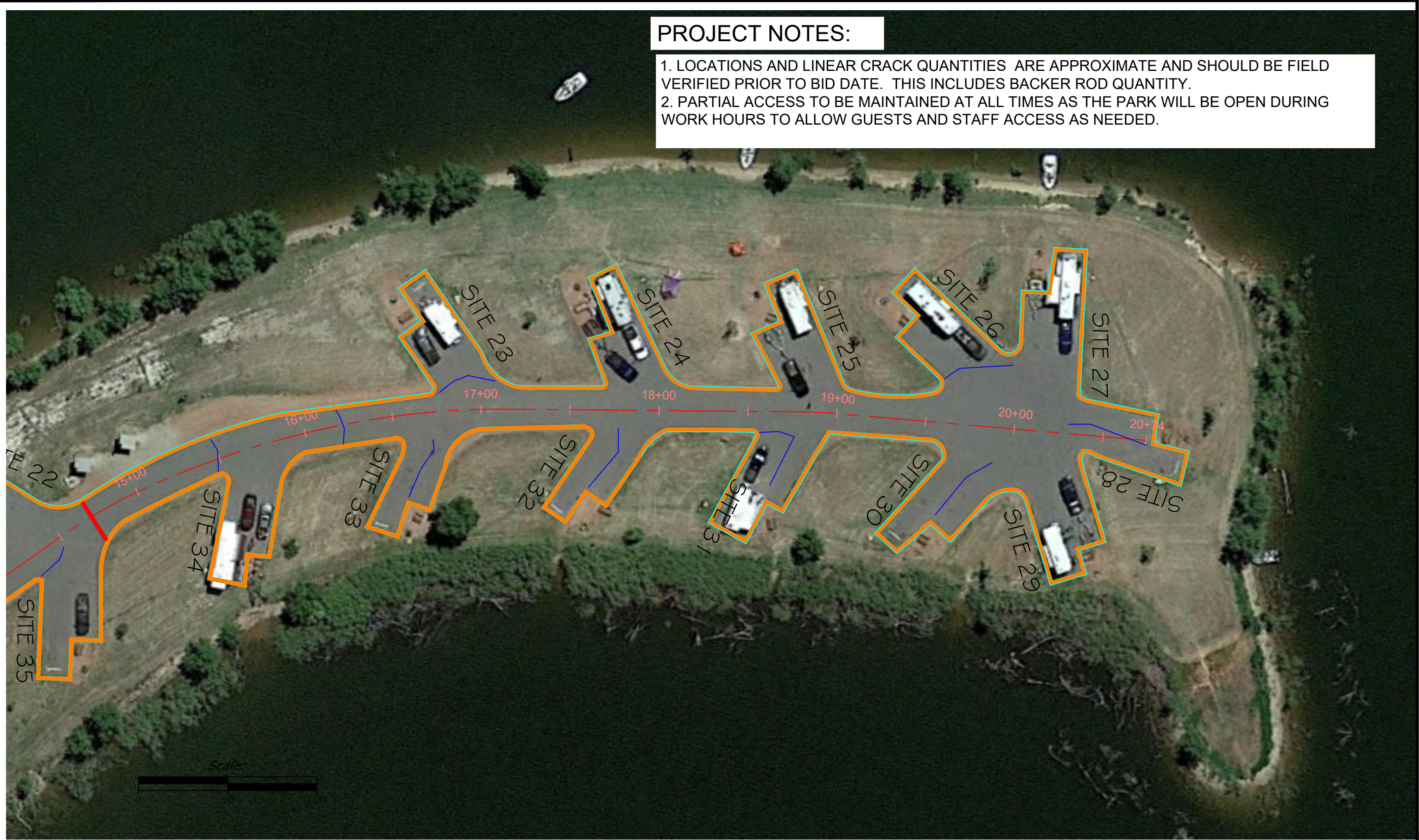
TRR Shoulder Gravel and Crack Seal
 Sites 16-22, 34-40



SHEET: 9 of 10

PROJECT NOTES:

1. LOCATIONS AND LINEAR CRACK QUANTITIES ARE APPROXIMATE AND SHOULD BE FIELD VERIFIED PRIOR TO BID DATE. THIS INCLUDES BACKER ROD QUANTITY.
2. PARTIAL ACCESS TO BE MAINTAINED AT ALL TIMES AS THE PARK WILL BE OPEN DURING WORK HOURS TO ALLOW GUESTS AND STAFF ACCESS AS NEEDED.



K.Harrington 1/19/23
 DRAWN BY: DATE:
 K.Harrington 1/19/23
 CHECKED BY: DATE:

REVISED BY: DATE:
 APPROVED BY: DATE:

APPROVED BY: DATE:
 APPROVED BY: DATE:



**MONTANA FISH,
 WILDLIFE & PARKS**

TRR Shoulder Gravel and Crack Seal
 Sites 23-34



SHEET: 10
 of 10