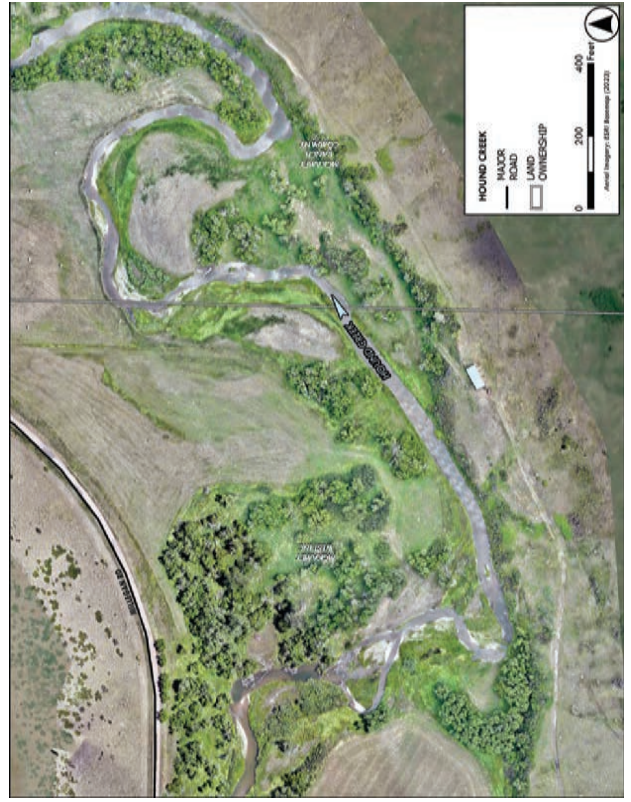




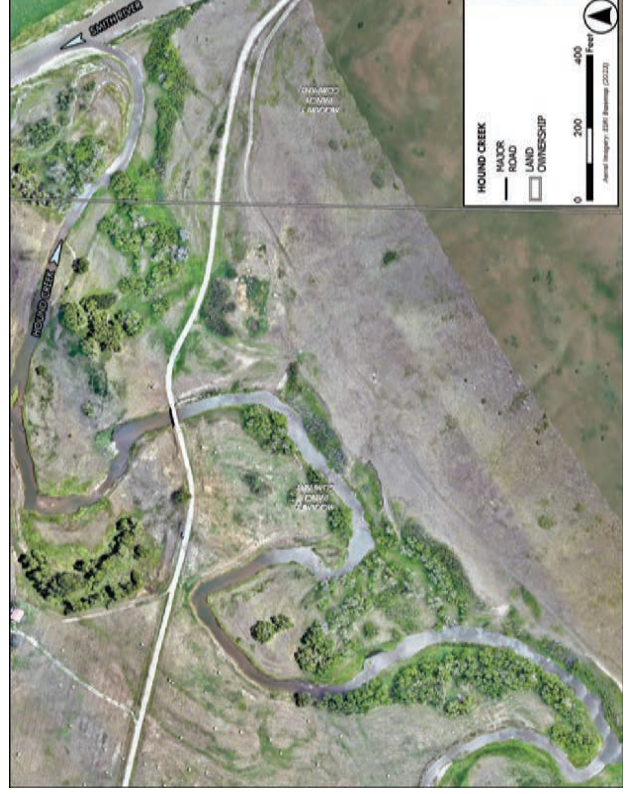
Lower Hound Creek Restoration Feasibility



Lower Hound Creek Restoration Feasibility



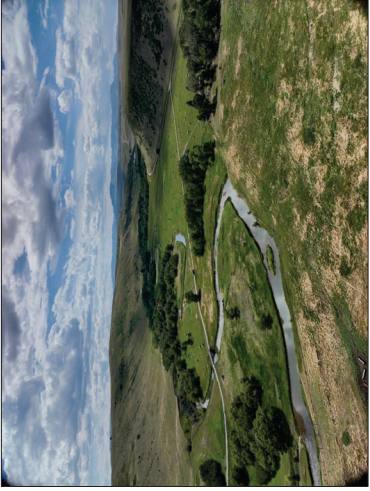
Lower Hound Creek Restoration Feasibility



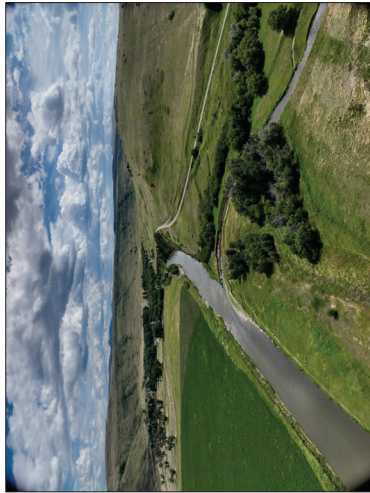
Lower Hound Creek Restoration Feasibility



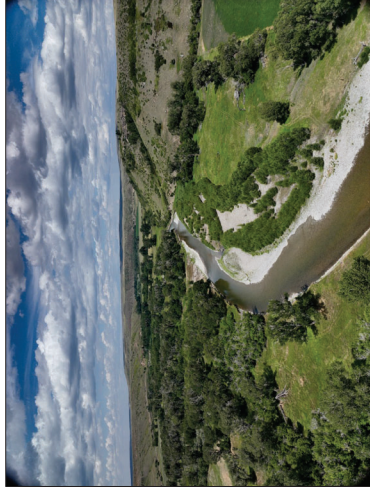
Hound Creek. 2024. From: [obliquus.images](#). Looking southwest (upstream) from the private access road towards the upstream extent of Hound Creek on the McKimby Ranch.



Hound Creek. 2024. From: [obliquus.images](#). Looking southwest/upstream at the middle section of Hound Creek on the McKimby Ranch. The private access road is seen in the middle of the photo.



Hound Creek. 2024. From: [obliquus.images](#). Looking south at confluence with Smith River showing erosion into low terrace on south side of Hound Creek.



Hound Creek. 2024. From: [obliquus.images](#). Looking north (downstream) at Smith River downstream of confluence of Hound Creek.

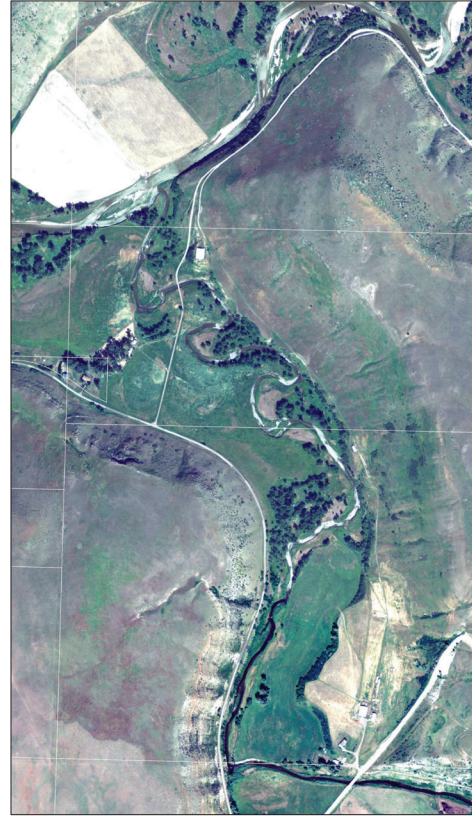
Attachment B. Historical Imagery



1955

Lower Hound Creek Restoration Feasibility

48



2005

Lower Hound Creek Restoration Feasibility

47



2009

Lower Hound Creek Restoration Feasibility

49

Lower Hound Creek Restoration Feasibility

50



2019

Lower Hound Creek Restoration Feasibility

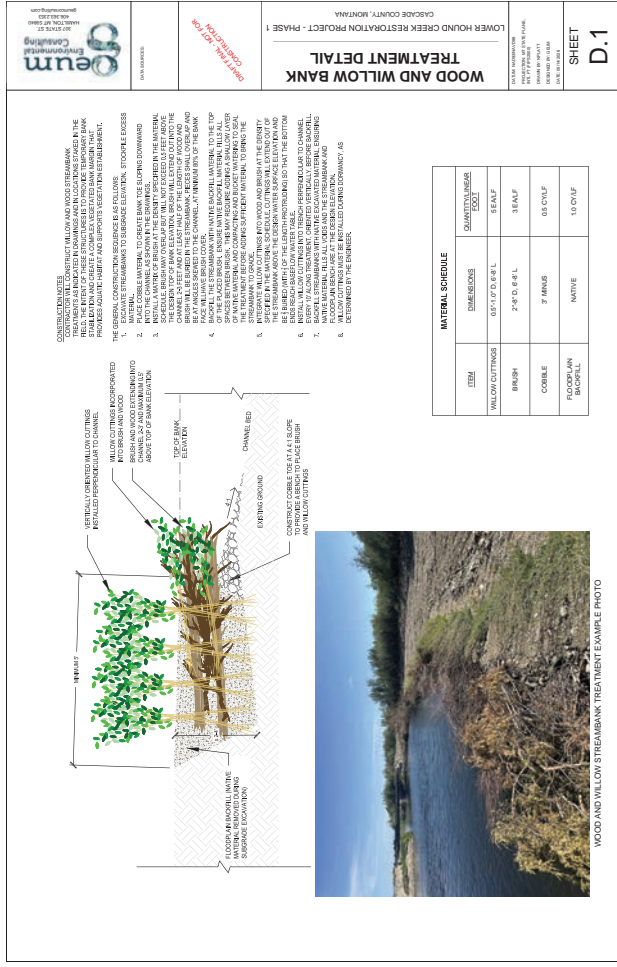
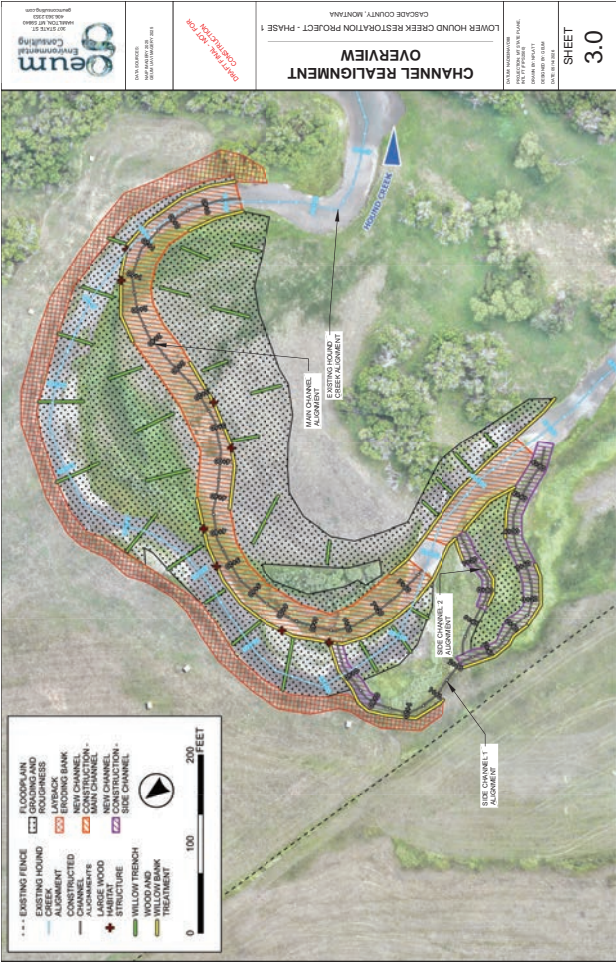
51



2021

Lower Hound Creek Restoration Feasibility

52



WOOD AND WILLOW STREAMBANK TREATMENT EXAMPLE PHOTO

