

Directory of Montana Maps

County Land Ownership Maps
Internet Accessible Mapping Information
U.S. Geological Survey Resources
State and Federal Land Management
Agency Offices

- Montana Fish, Wildlife & Parks
- Montana Dept. of Natural Resources and Conservation
- USDA Forest Service
- USDI Bureau of Land Management
- USDI Fish and Wildlife Service

Revised June, 2013



***Montana Fish,
Wildlife & Parks***



WHERE TO START

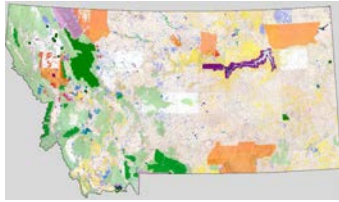
Whether hunting public or private land, the successful hunter will spend time scouting an area and talking with locals to identify good hunting opportunities and establish personal relationships.

The first thing you will need is a good set of maps. Montana Fish, Wildlife & Parks publishes the *Directory of Montana Maps* which provides a thorough listing of agency and local government contacts where you can find land ownership information. It is also a good idea to contact the Bureau of Land Management, the U.S. Forest Service, the U.S. Geological Survey, or a local sporting goods store for a map of the area you intend to hunt. Land ownership changes over time and it's always a good idea to verify public ownership with your local land management agency. You can also verify public and private land ownership on the web through the Montana Department of Administration Cadastral Mapping Project.

Contact information for each of these resources is contained in this guide.



To obtain a copy of this directory, write to Fish, Wildlife & Parks
PO Box 200701, Helena, MT 59620 or call (406) 444-2435
and request a **DIRECTORY OF MONTANA MAPS**.
Copies are also available at all Regional Headquarters and on the
FWP website at <http://fwp.mt.gov>.



CONTENTS

Directory of Montana Maps

Understanding the Law 4

County Map Resources 5

Municipality Websites 12

Internet Resources for Maps and
Landownership Information 13

State & Federal Land Management Agencies

U.S. Geological Survey 13

Montana Fish, Wildlife and Parks 14

Montana Department of Natural
Resources and Conservation 15

USDA Forest Service 16

USDI Bureau of Land Management 17

USDI Fish and Wildlife Service..... 18



Understanding the law:

Montana Code Annotated Section 87-6-415 reads:

87-6-415. Failure to obtain landowner's permission for hunting. (1) A resident or nonresident shall obtain permission of the landowner, the lessee, or their agents before taking or attempting to take nongame wildlife, predatory animals, game animals, or wolves while hunting on private property.

(2) A person who violates this section shall, upon conviction for a first offense, shall be fined \$135.

(3) A person convicted of a second offense of hunting on private property without obtaining permission of the landowner within 5 years shall be fined not less than \$500 or more than \$1,000.

(4) In addition, the person, upon conviction under subsection (3) or forfeiture of bond or bail:

(a) may be subject to forfeiture of any current hunting, fishing, or trapping license issued by this state and the privilege to hunt, fish, or trap in this state or to use state lands, as defined in 77-1-101, for recreational purposes for a period of time set by the court; and

(b) may be ordered to make restitution for property damage resulting from the violation in an amount and manner to be set by the court. The court shall determine the manner and amount of restitution after full consideration of the convicted person's ability to pay the restitution. Upon good cause shown by the convicted person, the court may modify any previous order specifying the amount and manner of restitution. Full payment of the amount of restitution ordered must be made prior to the release of state jurisdiction over the person convicted.

ALL HUNTERS are required to obtain landowner permission before hunting on private property, regardless of animals or birds hunted.

ASK FIRST

to

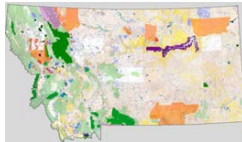
Hunt on Private Property!



Maps identifying ownership of land in Montana are available from various county, state and federal agency offices. Private land ownership (by owner's name) is generally identified in county plat books and/or county conservation district maps. These documents may be available only through personal review at the county courthouse, or there may be copies available for purchase. Public land ownership (by agency name) is generally identified in maps produced by the appropriate land management agency.

Map information is only as current as the most recent date of printing, so users are advised to view maps as tools to identify potential land ownership, and to verify actual ownership through personal contact with private landowners and land management agency officials. To help keep the information in this guide as current as possible, please call (406) 444-3065 or email joweigand@mt.gov if you find new resources or incorrect information.

Many counties now recommend and refer landownership inquiries to:
<http://svc.mt.gov/msl/mtcadastral/>



County Map Resources

ANACONDA-DEER LODGE COUNTY

County Courthouse (406) 563-4060
 800 S Main
 Anaconda, MT 59711
Plat Map/Book
Personal Review - No Purchase
www.anacondamt.org

BEAVERHEAD COUNTY

County Courthouse (406) 683-3757
 2 S Pacific Street
 Dillon, MT 59725
Map - Legal or Tabloid Size \$3.00
Plotted Map - Paper size C (17x22) \$10.00
Plotted Map - Paper size D (22x34) \$15.00
Plotted Map - Paper size E (34x44) \$20.00
Rural Addressing Map Book \$40.00
(When completed) Custom GIS maps will be billed at \$20.00 hour. S&H \$5.00
Call, Write or in Person
www.beaverheadcounty.org

BEAVERHEAD CONSERVATION DISTRICT

420 Barrett Street (406) 683-3802
 Dillon, MT 59725
Book (Revised 2009): \$30.00 - \$48.00 + S&H
Call, Write or in Person



BIG HORN COUNTY

County Clerk (406) 665-9730
 PO Box 908
 121 W. 3rd
 Hardin, MT 59034
Plat Book (Revised: 2005): \$54.00
Section Maps (Revised: 2005): \$0.25/copy
Call, Write or In Person
<http://bighorn.mt.gov/>

BLAINE COUNTY

County Courthouse
 PO Box 278 (406) 357-3240
 Chinook, MT 59523
Color Plat Book (11"x17"): \$150.00 + \$6.50 S&H
Black & White Plat Book (8.5"x11"): \$75.00 + \$5.00 S&H
Color Individual Plat Pages: \$3.00
Black & white Plat Pages: \$1.00
Ownership map: \$15.00 + \$1.50 S&H
Medium road map: \$7.50
Operator's Map (Revised: 2010): \$15.00
Call, Write or In Person
<http://co.blaine.mt.gov/>



BROADWATER COUNTY

See below or go to http://www.townsendmt.com/chd_sec4pg1.asp

BROADWATER CONSERVATION DISTRICT

415 S Front Street (406) 266-3146
Townsend, MT 59644 Ext.104
Small Landownership Map (2009): \$18.00
Large Landownership Map (2008): \$20.00
Call, Write or In Person

BUTTE-SILVERBOW COUNTY

County Courthouse (406) 497-6337
Land Records
155 W Granite St.
Butte MT 59701
GIS Service (406) 497 6262
Plat Map/Book: \$5.00/Page
Call, Write or In Person
<http://www.co.silverbow.mt.us/departments/additional/maps.asp>

CARBON COUNTY

County Courthouse (406) 446-1220
PO Box 887
Red Lodge, MT 59068
www.co.carbon.mt.us/

CARTER COUNTY

County Courthouse (406) 775-8717
101 Park Street
Ekalaka, MT 59324
Plat Map/Book (Current)
Personal Review - No Purchase
<http://www.cartercountymt.info/>

CARTER CONSERVATION DISTRICT

PO Box 313 (406) 775-6355
Ekalaka, MT 59324 Ext. 3
<http://cartercd.org/index.htm>
Landownership Map Books
5.5"x8.5": \$20.00
8.5" x 11": \$30.00
BLM and USFS maps available for purchase

CASCADE COUNTY

GIS Annex (406) 454-6727
325 Second Avenue North Rm 118
Great Falls, MT 59401
Topographic (2010): \$2.00 - \$18.00
In Person
<http://www.co.cascade.mt.us/>

CASCADE CONSERVATION DISTRICT

12 Third Street North West (406) 727-3603
Great Falls, MT 59404-2869 Ext. 125
Landownership Map (2013): \$25.00
Call or In Person
<http://www.cascadecd.com/>

CHOTEAU COUNTY

County Courthouse (406) 622-5151
1308 Franklin Street
PO Box 459
Fort Benton, MT 59442
Landownership Map (2008): \$30.00 + S&H
Emergency Address Map: \$20.00 + S&H
Call, Write or In Person
<http://www.co.chouteau.mt.us/>

CUSTER CONSERVATION DISTRICT

3120 Valley Drive East (406) 232-7905
Miles City, MT 59301 Ext. 103
Landownership Map (2010): \$20.00 + S&H
Call, Write or In Person

CUSTER COUNTY

County Courthouse (406) 874-3343
1010 Main Street
Miles City, MT 59301
Plat Map/Book
Personal Review - No Purchase
<http://ccsomt.com/>

DANIELS COUNTY

County Courthouse (406) 487-5561
PO Box 247
Scobey, MT 59263
<http://www.scobeymt.com/>

DAWSON COUNTY

County Courthouse (406) 377-3058
207 West Bell Street
Glendive, MT 59330
Rural Addressing Book (2010): \$20.00
Landownership Map (2010): \$6.00
Call, Write or In Person
www.dawsoncountymontana.com

SEE ALSO MCCONE CONSERVATION DISTRICT

<http://mccone.mt.nacdnet.org/> for
County Landownership Maps: S/H \$3.00
Dawson Co. Map: \$6.00



FALLON COUNTY

County Courthouse
10 West Fallon Ave.
P.O. Box 1134
Baker, MT 59313
Book (2009): \$50.00
Road Map: \$15.00
Call, Write or In Person
<http://falloncounty.net/>

(406) 778-7106

GARFIELD COUNTY

County Courthouse
PO Box 7
Jordan, MT 59337
Landownership Cards: No Purchase
Landownership Map (2004): \$20.00
Call, Write or In Person
www.garfieldcounty.com

(406) 557-2760

LITTLE BEAVER CONSERVATION DISTRICT

PO Box 917
Baker, MT 59313
Operator Maps: \$5.00
Call, Write or In Person

(406) 778-2217

GARFIELD CONSERVATION DISTRICT

307 Main Street
PO Box 369
Jordan, MT 59337
Landownership Map w/ Key: \$5.00
Landownership Map Books
Small Book (5.5"x8.5"): \$30.00
Large Book (8.5"x11"): \$40.00
Large Book (8.5"x11") aerial photo view: \$50.00
<http://garfieldcountycd.org/Products%20for%20Sale.htm>

(406) 557-2740

Ext. 100

FERGUS COUNTY

County Courthouse
712 West Main Street
Lewistown, MT 59457
Plat Map/Book: Price Varies In Person
www.co.fergus.mt.us

(406) 538-5242

SEE ALSO MCCONE CONSERVATION DISTRICT

<http://mccone.mt.nacdn.net.org/> for
County Landownership Maps: S/H \$3.00
Garfield Co. Map \$20.00

FLATHEAD COUNTY

County Courthouse
800 South Main Street
Kalispell, MT 59901
Section Maps: \$5.00 - \$20.00
Call, Write or In Person
<http://flathead.mt.gov/gis/>

(406) 758-5540

GLACIER COUNTY

County Courthouse
512 East Main Street
Cut Bank, MT 59427
Plat Map/Book: \$0.50/Copy In Person
www.glaciercountymt.org

(406) 873-5063

Ext. 3

GALLATIN COUNTY

County Courthouse
311 West Main Street
Bozeman, MT 59715
Plat Map/Book: \$.50/copy In Person
GIS Office: 582-3166
http://www.gallatin.mt.gov/Public_Documents/index

(406) 582-3050

GOLDEN VALLEY COUNTY

County Courthouse
PO Box 10
Ryegate, MT 59074
Plat Map/Book: \$0.25 + per copy In Person
Landownership Map (2004): \$7.00
Call, Write or In Person
www.co.golden-valley.mt.us

(406) 568-2231

GALLATIN CONSERVATION DISTRICT

PO Box 569
120 S 5th St Ste 104
Manhattan, MT 59741
<http://www.gallatincd.org/>

406-282-4350

GRANITE COUNTY

County Courthouse
220 North Sansome
Philipsburg, MT 59858
Plat Map/Book (1985): No Purchase Personal Review
<http://www.co.granite.mt.us/>

(406) 859-3771



HILL COUNTY

County Courthouse (406) 265-5481
 315 4th Street Ext. 221
 Havre, MT 59501
Plat Map/Book: \$35.00/Copy
In Person
www.co.hill.mt.us

HILL CONSERVATION DISTRICT

206 25th Avenue West (406) 265-6252
 Havre, MT 59501-3481 Ext. 3
Map (1987): \$5.00
Call, Write or In Person

JEFFERSON COUNTY

County Courthouse (406) 225-4020
 201 Centennial
 PO Box H
 Boulder, MT 59632
Land Ownership Cards: \$0.25 - \$0.50/Copy
In Person
<http://www.jeffco.mt.gov/> or use map tool at
http://jeffco.mt.gov/web_map/

JUDITH BASIN COUNTY

County Courthouse (406) 566-2277
 31 First Avenue
 PO Box 160
 Stanford, MT 59479
Plat Map/Book
Personal Review - No Purchase
<http://www.co.judith-basin.mt.us/>

JUDITH BASIN CONSERVATION DISTRICT

121 Central Avenue (406) 566-2311
 PO Box 386 Ext. 3
 Stanford, MT 59479
Landownership Map (2008)
Wall Size: \$25.00
8.5"x11" Notebook: \$30.00
Call, Write or In Person
teresa.wilhelm@mtnacdnet.net

LAKE COUNTY

County Courthouse (406) 883-7212
 Plat Department
 106 4th Avenue East
 Polson, MT 59860
Section Maps (2008): \$3.00
Call/Write or In Person
GIS Maps: \$1.00 - \$7.00
www.lakecounty-mt.org

**LEWIS & CLARK COUNTY**

County Courthouse (406) 447-8337
 316 N Park Avenue
 Helena, MT 59624
Plat Map/Book (2008): \$0.25 - \$0.50/Copy
In Person
www.co.lewis-clark.mt.us

LEWIS & CLARK CONSERVATION DISTRICT

790 Colleen Street (406) 449-5278
 Helena, MT 59601
Booklet 4 townships/page: \$25 + S&H
Booklet 1 township/page with owner names in the parcels: \$40 + S&H
Call, Write or In Person
<http://lccd.mt.nacdn.net/products.htm>

LIBERTY COUNTY

County Courthouse (406) 759-5365
 111 First Street East
 Chester, MT 59522
Plat Map/Book
Personal Review - No Purchase
<http://co.liberty.mt.us>

LIBERTY CONSERVATION DISTRICT

PO Box 669 (406) 759-5778
 18 Main Street Ext. 3
 Chester, MT 59522
Landownership Wall Map (2009): \$18.00
Booklet: \$18.00 - \$25.00
Call, Write or In Person

LINCOLN COUNTY

County Courthouse (406) 293-7781
 512 California Avenue Ext. 207
 Libby, MT 59923
Plat Map/Book: \$0.50 - \$1.00+
 Large format copies of plat and surveys
 18" x 24": \$3.00
 24" x 36": \$5.00
Call, Write or In Person
www.lincolncountymt.us

MADISON COUNTY

County Courthouse (406) 843-4270
 110 West Wallace
 PO Box 366
 Virginia City, 59755
Plat Map (24" & 36" sizes): \$5.00 - \$6.00
In Person
<http://madison.mt.gov/>



MCCONE COUNTY

County Courthouse (406) 485-3505
 1004 Avenue C
 Circle, MT 59215
Plat Map/Book: \$0.25 - \$0.50/Copy
Call, Write or In Person
<http://www.mccone.mt.gov/>

MCCONE CONSERVATION DISTRICT

106 Tenth Street (406) 485-2744
 PO Box 276 Ext. 3
 Circle, MT 59215
 County Landownership Maps: S/H \$3.00
Wall Map \$20.00
Book Map \$15.00
Call, Write or In Person
<http://mccone.mt.nacdn.net/>

MEAGHER COUNTY

County Courthouse (406) 547-3612
 15 West Main Ext. 2
 White Sulphur Springs, MT 59645
Plat Map - 24" & 36" sizes (2009): \$5 - \$7.00
In Person
dogle@meaghercounty.org <http://http://www.meaghercounty.mt.gov/maps.html>

MEAGHER CONSERVATION DISTRICT

PO Box 589 (406) 547-3633
 White Sulphur Springs Ext. 5
 MT 59645
Map (2005): \$10.00
Call, Write or In Person

MINERAL COUNTY

County Courthouse (406) 822-3542
 300 River Street
 Superior, MT 59872
Information Online Only
www.co.mineral.mt.us

MISSOULA COUNTY

County Courthouse (406) 523-4752
 200 West Broadway
 Missoula, MT 59802
Plat Map/Book: \$0.25 - \$0.50/Copy
In Person
<http://www.co.missoula.mt.us/gis/>

MUSSELSHELL COUNTY

County Courthouse (406) 323-1104
 506 Main Street
 Roundup, MT 59072
Plat Map/Book: \$0.25 - \$0.50/Copy
In Person

**MUSSELSHELL / GOLDEN VALLEY**

EXTENSION OFFICE
 26 Main (406) 323-2704
 Roundup, MT 59072
Map (2003): \$15.00
Call, Write or In Person

UPPER MUSSELSHELL CONSERVATION DISTRICT

PO Box 201 (406) 632-5534
 Harlowton, MT 59036 Ext. 3
Map (2005): \$5.00 + S&H
Call, Write or In Person
cheryl.miller@mtnacdn.net

PARK COUNTY

County Courthouse (406) 222-4110
 414 East Callender Street
 Livingston, MT 59047
Plat Maps - 24" & 36" sizes: \$5.00 - \$7.00
In Person
<http://www.parkcounty.org/site/1GIS.html>
clerkrecorder@parkcounty.org

PETROLEUM COUNTY

County Courthouse (406) 429-5311
 201 E Main
 PO Box 226
 Winnett, MT 59087
Plat Map/Book: \$0.15 - \$0.25/Copy
In Person
<http://www.petroleumcountymt.com/>

PETROLEUM CONSERVATION DISTRICT

PO Box 118 (406) 429-6646
 Winnett, MT 59087
Landowner Maps (2003): \$21.69 + S&H
Call, Write or In Person

PHILLIPS COUNTY

County Courthouse (406) 654-2423
 314 South 2nd Avenue West
 P.O. Box 360
 Malta MT 59538
Plat Map/Book: \$2.00/Copy
In Person
<http://www.maltachamber.com/philco/county.htm>



PHILLIPS CONSERVATION DISTRICT

Malta USDA Office (406) 654-1334
 1120 Hwy 191 S
 Malta, MT 59538
Landowner Map Booklets S&H:\$10.00
5.5" X 8.5": \$30.00
8.5" X 11": \$40.00
Wall Map: \$40.00

PONDERA COUNTY

County Courthouse (406) 271-4000
 20 Fourth Avenue South West
 Conrad MT 59425-2340
Plat Map/Book: \$2.00
Road Atlas: \$15.00
Call, Write or In Person
www.ponderacountymontana.org

PONDERA CONSERVATION DISTRICT

406 N. Main (406) 278-7611
 Conrad MT 59425 Ext. 3
Map/Ownership Index Book (2004)
Map: \$20.00
Book + Map: \$30.00
Call, Write or In Person

POWDER RIVER COUNTY

County Courthouse (406) 436-2361
 Courthouse Square
 PO Box 200
 Broadus MT 59317
Plat Map/Book (2007): Review Only
Maps (2000): \$5.00, \$15.00 + S&H
Call, Write or In Person
<http://prco.mt.gov/>

POWELL COUNTY

County Courthouse (406) 846-3680
 409 Missouri Avenue
 Deer Lodge MT 59722
Plat Maps (24" & 36" Sizes): \$2.00 - \$3.00
Partial Copies: \$0.25 - \$0.50/Copy
In Person
<http://www.powellcountymt.gov> or
www.powellcountymontana.com

PRAIRIE COUNTY

County Courthouse (406) 635-5575
 217 West Park
 PO Box 125
 Terry MT 59349
Land ownership map or rural address book:
\$10.00
Call, Write or In Person
<http://prairie.mt.gov/>

SEE ALSO MCCONE CONSERVATION DISTRICT

<http://mccone.mt.nacdnet.org/> for
County Landownership Maps: S/H \$3.00
Prairie Co. Map \$10.00

RAVALLI COUNTY

County Courthouse (406) 375-6212
 215 South Fourth Street
 Hamilton MT 59840
Section Maps: \$3.00
Call, Write or In Person
<http://rc.mt.gov/default.mcp>

RICHLAND COUNTY

County Courthouse (406) 433-1708
 201 West Main Street
 Sidney MT 59270
Landownership Book (2008): \$85.00
In Person
www.richland.org

ROOSEVELT COUNTY

County Courthouse (406) 653-6208
 400 Second Avenue South
 Wolf Point MT 59201
Plat Map/Book - No Purchase
Wall Map (24"x36"): \$10.00 + S&H
1997 Rural Resident Map: \$5.00
Mapbook: \$75.00
Call, Write or In Person
<http://www.rcgis.org/>

ROSEBUD COUNTY

County Courthouse (406) 356-7318
 1200 Main St (406) 346-2516
 PO Box 47
 Forsyth MT 59327
Plat Map/Book (2007): \$0.50/Page
In Person
<http://www.rosebudmontana.com/>

SANDERS COUNTY

County Courthouse (406) 827-6943
 Plat Clerk
 PO Box 519
 1111 Main Street
 Thompson Falls MT 59873
Section Map: \$2.00
Call, Write or In Person
<http://sanderscounty.mt.gov/>



SHERIDAN COUNTY

County Courthouse (406) 765-3403
 100 West Laurel Avenue
 Plentywood MT 59254-1699
Plat Map/Book: Page Copy Available
Rural Resident Map (2005): \$5.00
Call/Write or In Person
www.co.sheridan.mt.us

SHERIDAN CONSERVATION DISTRICT

119 N. Jackson
 Plentywood, MT 59254
Wall Map: \$30.00
8 1/2 x 11 Orthophoto Map Book: \$35.00
5x8 Map book (glove box size): \$20.00
<http://sheridancountycd.com/items-for-sale/>

STILLWATER COUNTY

County Courthouse (406) 322-8060
 PO Box 1287
 Columbus MT 59019
 Surveys & Plats (small) \$1.50, (large) \$3.00
<http://stillwater.mt.gov> go to GIS

STILLWATER CONSERVATION DISTRICT

334 North Ninth Street (406) 322-5359
 PO Box 415 Ext. 3
 Columbus MT 59019
Landownership Map (2009): \$12.00
Call, Write or In Person

SWEET GRASS COUNTY

County Courthouse (406) 932-5152
 200 West First Avenue
 Big Timber MT 59011
Plat Map/Book: \$2.50/Copy
In Person
www.co.sweetgrass.mt.us

TETON COUNTY

County Courthouse (406) 466-2693
 1 Main Ave. S.
 PO Box 610
 Choteau MT 59422
Plat Map/Book: \$5.00/Copy
Ownership Directory: \$75.00
In Person
www.tetoncomt.org/

TOOLE COUNTY

County Courthouse (406) 424-8300
 226 First Street South
 Shelby MT 59474
Plat Map/Book: Copy Service Available
Book (1986): \$10.00
In Person
<http://www.toolecountymt.gov/>

TOOLE CONSERVATION DISTRICT

1125 Oilfield Avenue (406) 434-5835
 Shelby MT 59474
Map (2000): \$15.00
Call, Write or In Person

TREASURE COUNTY

County Courthouse (406) 342-8540
 307 Rapelje
 PO Box 392
 Hysham MT 59038
Plat Map/Book - No Purchase
Personal Review Only

TREASURE CONSERVATION DISTRICT

211 Elliott Street (406) 342-5466
 PO Box 288 Ext. 3
 Hysham MT 59038
Landownership Map (1995): \$5.00
Call, Write or In Person

VALLEY COUNTY

County Courthouse (406) 228-6200
 501 Court Square, Box 2
 Glasgow MT 59230
Plat Map/Book - No Purchase
Personal Review Only
<http://valleycountymt.net/>

WHEATLAND COUNTY

County Courthouse (406) 632-4891
 201 A Avenue North West
 Harlowton MT 59036
Plat Map/Book: \$0.25 - \$0.50/Page Copied
In Person
<http://www.harlowtonchamber.com/pages/county.html>

WIBAUX COUNTY

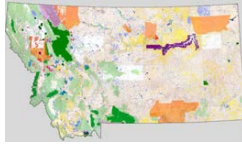
County Courthouse (406) 796-2481
 200 S Wibaux
 Wibaux MT 59353
 Plat Map/Book: \$0.10/Page
In Person

WIBAUX CONSERVATION DISTRICT

RR 1 Box 2064 (406) 796-2211
 Wibaux MT 59353 Ext. 3
Ownership Map (Sept. 2007): \$19.00
Call, Write or In Person

YELLOWSTONE COUNTY

County Courthouse (406) 256-2785
 217 North 27th St.
 Billings MT 59107
 GIS Office: (406) 256-2812
Plat Map/Book (2009): \$0.50 - \$0.75/Copy
In Person www.co.yellowstone.mt.gov/maps



Municipality Websites

Not
Comprehensive

Alberton www.albertonmontana.com

Baker www.bakermt.com

Belgrade www.ci.belgrade.mt.us

Big Fork area www.bigfork.org

Big Timber www.bigtimber.com

Billings www.ci.billings.mt.us

Bozeman www.bozeman.net

Broadus www.broadusmontana.com

Browning www.browningmontana.com

Cascade www.cascademontana.com

Chinook <http://chinookmontana.com/>

Choteau www.cityofchoteau-mt.gov/

Circle <http://circle-montana.com>

Colstrip www.colstripmontana.com

Columbia Falls

www.columbiafallschamber.com

Conrad www.conradmontana.com

Culbertson www.culbertsonmt.com

Cut Bank www.cutbankchamber.com

Darby <http://darbymontana.com>

Dillon <http://www.dillonmt.org/>

Drummond

www.drummondmontana.com

East Helena www.easthelenamt.us

Ennis www.ennischamber.com

Fairview www.midrivers.com/~fairview

Forsyth <http://forsythmt.com/>

Fort Benton www.fortbenton.com

Glasgow <http://glasgowmontana.com/>

Glendive www.glendivechamber.com

Great Falls <http://www.greatfallsmt.net/>

Hamilton www.cityofhamilton.net

Hardin www.hardinmt.com

Harlowton www.harlowtonchamber.com

Havre www.ci.havre.mt.us

Helena www.ci.helena.mt.us

Kalispell www.kalispell.com

Laurel <http://laurel.mt.gov/>

Lewistown www.lewistownchamber.com

Libby www.libbymontana.com

Livingston www.livingstonmontana.org/

Malta www.maltachamber.com

Manhattan

<http://www.townofmanhattan.com/>

Medicine Lake

www.medicinelakemt.com

Miles City www.milescitychamber.com/

Missoula www.ci.missoula.mt.us

Plentywood www.plentywood.com

Philipsburg www.philipsburgmt.com

Polson www.polsonchamber.com

Richey www.richeymt.com

Scobey www.scobeymt.com/scobey/

Seeley Lake

<http://www.seeleylakechamber.com/>

Shelby www.shelbymt.com

Sidney www.sidneymt.com

Stevensville

<http://www.stevensvillemontana.com/>

Three Forks

www.threeforksmontana.com

Valier www.valier.org

Virginia City www.virginiacity.com

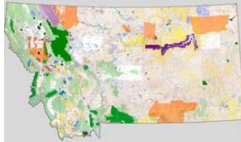
West Yellowstone

<http://www.destinationyellowstone.com/>

Whitefish www.whitefish.govoffice.com

Wolf Point www.wolfpoint.com





Internet Resources for Maps and Land Ownership Information:

Montana Fish Wildlife & Parks

FWP offers an interactive website to assist hunters and anglers in determining public and private ownership for specific parcels throughout the state. From the FWP main page, users should choose their specific area of interest, hunting or fishing, and follow site links to the trip planning area. This site is a powerful tool for locating parcels and identifying land ownership information. Website address: <http://www.fwp.mt.gov> You can also go directly to <http://nris.mt.gov/gis/ownmaps.asp>

Montana Department of Transportation – County Road Maps

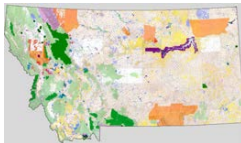
The maps indicate cities, towns, national forests, federal reservations, game refuges, lakes, reservoirs, streams, railroads and mountain peaks with elevations. Drainage and alignment of roads are checked with aerial photographs when needed. The information shown on county maps is based on the latest available roadway data. The actual status of the roads may differ depending on when the last county inventory was completed. Website address: <http://www.mdt.mt.gov/travinfo/scripts/countymaps.pl>

Montana State Library - Natural Resource Information System

The Montana Natural Resource Information System (NRIS) Geographic Information System (GIS) acts as a clearinghouse for GIS databases and provides services to State, Federal, Private, Non-Profit, and Public groups or individuals needing access to GIS technology and information. The information available from this site includes detailed statewide GIS data, USGS topographic maps and an interactive mapping feature. Website address: <http://nris.mt.gov/gis>

Public Lands Information Center

This site offers an interactive resource for detailed recreation information on public lands throughout eight western states. Visitors can also order maps, books, and other information related to public land recreation. <http://www.publiclands.org>



U.S. Geological Survey

Color prints of USGS, 7.5 and 15 minute series topographical (contour) maps are available from the USGS office in Denver, Colorado. Send your request and a check or money order for \$6.00 for each map to:

USGS INFORMATION SERVICES
Box 25286
Denver Federal Center
Denver CO 80225

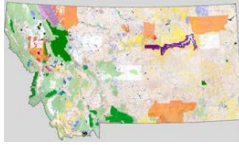


A \$5.00 handling charge is applied to all orders.
Order Forms can be faxed to 303-202-4693.

For more information or ordering assistance, call **1-888 ASK USGS** or **1-888-275-8747**.

Website Address: <http://recreation.usgs.gov/>

Many outdoor recreation and sporting goods stores also have maps of local areas available for sale. Refer to your local phone book's yellow pages for the nearest *commercial dealers* that sell USGS maps and contact them directly for pricing and ordering information.



Montana Fish, Wildlife & Parks

STATE HEADQUARTERS
1420 East 6th Avenue
PO Box 200701
Helena MT 59620-0701
(406) 444-2535
(TDD) (406) 444-1200
<http://www.fwp.mt.gov>

REGIONAL HEADQUARTERS AND AREA OFFICES

REGION 1- Kalispell
490 North Meridian Rd
Kalispell, MT 59901
(406) 752-5501

REGION 2- Missoula
3201 Spurgin Rd
Missoula, MT 59804
(406) 542-5500

REGION 3- Bozeman
1400 South 19th
Bozeman, MT 59718
(406) 994-4042

REGION 4- Great Falls
4600 Giant Springs Rd
Great Falls, MT 59405
(406) 454-5840

REGION 5- Billings
2300 Lake Elmo Dr
Billings, MT 59105
(406) 247-2940

REGION 6- Glasgow
54078 US Hwy 2 W
Glasgow, MT 59230
(406) 228-3700

REGION 7- Miles City
352 I-94 Business Loop
PO Box 1630
Miles City, MT 59301
(406) 234-0900

BUTTE AREA RESOURCE OFFICE
1820 Meadowlark Lane
Butte, MT 59701
(406) 494-1953

HAVRE AREA RESOURCE OFFICE
2165 Hwy 2 East
Havre, MT 59501
(406) 265-6177

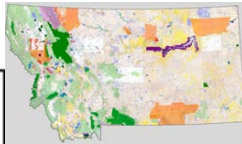
HELENA AREA RESOURCE OFFICE
930 Custer Avenue West
Helena, MT 59620
(406) 495-3260

LEWISTOWN AREA RESOURCE OFFICE
215 W. Aztec Dr.
P.O. Box 938
Lewistown, MT 59457
(406) 538-4658



FWP MAP RESOURCES

<http://fwp.mt.gov/doingBusiness/reference/maps/>



Dept. Natural Resources
& Conservation

**MONTANA DEPARTMENT OF
NATURAL RESOURCES AND
CONSERVATION**

**PO Box 201601
1625 Eleventh Avenue
Helena, MT 59620-1601
406-444-2074**

<http://www.dnrc.mt.gov>

**FORESTRY MANAGEMENT
BUREAU HEADQUARTERS**
2705 Spurgin Road
Missoula, MT 59804
(406) 542-4300

AREA OFFICES

CENTRAL LAND OFFICE
8001 North Montana Avenue
Helena, MT 59602
(406) 458-3500

EASTERN LAND OFFICE
321 Main Street
PO Box 1794
Miles City, MT 59301
(406) 232-2034

NORTHEASTERN LAND OFFICE
613 NE Main Street
PO Box 1021
Lewistown MT 59457-1021
(406) 538-7789

NORTHWEST LAND OFFICE
655 Timberwolf Pkwy, Suite 1
Kalispell, MT 59901-1215
(406) 751-2240

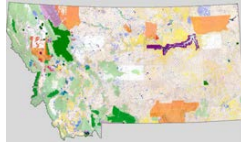
SOUTHERN LAND OFFICE
1371 Rintop Drive
Airport Industrial Park
Billings, MT 59105
(406) 247-4400

SOUTHWESTERN LAND OFFICE
1401 27th Avenue
Missoula, MT 59804
(406) 542-4200

UNIT OFFICES

Anaconda (406) 563-6078
Bozeman (406) 586-5243
Clearwater (406) 244-5857
Conrad (406) 278-7869
Dillon (406) 683-6305
Glasgow (406) 228-2430
Hamilton (406) 363-1585
Havre (406) 265-5236
Helena (406) 458-3500
Kalispell (406) 751-2241
Lewistown (406) 538-7789
Lincoln (406) 362-4999
Libby (406) 293-2711
Missoula (406) 542-4201
Stillwater (406) 881-2371
Plains (406) 826-3851
Swan Lake (406) 754-2301





U.S. Forest Service

<http://www.fs.usda.gov/r1>

Forest Visitor Series Maps area available for each National Forest in Montana. Each map covers all or part of one National Forest. Some of the Forests are divided into several maps. The scale is 1-inch per mile. The maps show roads, trails, streams, lakes, recreation sites, and general land ownership. Additional information is available on the web www.fs.fed.us/recreation/nationalforeststore/.

Maps can be purchased from any of the individual Forest Service offices listed. Make your checks payable to "USDA-Forest Service" for amount of purchase only. Maps will be sent after payment is made.

Individual maps of existing wilderness and primitive areas are also available; inquire for prices. General information on each wilderness/primitive area is available at no cost and can be sent to you upon request. The Forest Service also has numerous brochures on campgrounds, recreation areas and miscellaneous subjects available free upon request.

NORTHERN REGION HEADQUARTERS

Federal Building
200 East Broadway
PO Box 7669
Missoula, MT 59807-7669
(406) 329-3511

MONTANA NATIONAL FORESTS

BEAVERHEAD/DEERLODGE NATIONAL FOREST

420 Barrett St
Dillon, MT 59725-3572
(406) 683-3900
24 hr InfoLine: (406) 683-3913

BITTERROOT NATIONAL FOREST

1801 N 1st St
Hamilton, MT 59840-3114
(406) 363-7100
Mailroom R1 Bitterroot@FSNOTES

CUSTER NATIONAL FOREST

1310 Main St
Billings, MT 59105
(406) 255-1400

FLATHEAD NATIONAL FOREST

1935 3rd Ave E
Kalispell, MT 59901
(406) 758-5204

GALLATIN NATIONAL FOREST

Federal Building
10 E Babcock, PO Box 130
Bozeman, MT 59771
(406) 587-6701
mailroom r1 gallatin@fs.fed.us

HELENA NATIONAL FOREST

2880 Skyway Dr
Helena, MT 59602
(406) 449-5201
r1 helena webmaster@fs.fed.us

KOOTENAI NATIONAL FOREST

1101 US Highway 2 West
Libby, MT 59923
(406) 293-6211
aobst@fs.fed.us

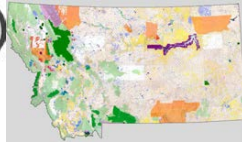
LEWIS & CLARK NATIONAL FOREST

1101 15th St N
Great Falls, MT 59401
(406) 791-7700

LOLO NATIONAL FOREST

Fort Missoula
Building 24
Missoula, MT 59804
(406) 329-3750





Bureau of Land Management

<http://www.blm.gov/mt/st/en.html>

For a current index of recreation maps contact BLM's state office in Billings.

Up-to-date 1:100,000 Surface Minerals Management Quadrangle Maps are also available from the state office for minimal cost. Additional information is available on the BLM website.

If you want to know more about Bureau of Land Management outdoor recreation opportunities in Montana, contact any of these BLM Offices:

MONTANA STATE OFFICE
5001 Southgate Drive
Billings, MT 59101
(406) 896-5000
BLM_MT_SO_Information@blm.gov

BILLINGS FIELD OFFICE
5001 Southgate Drive
PO Box 36800
Billings, MT 59107
(406) 896-5013
BLM_MT_Billings_FO@blm.gov

BUTTE FIELD OFFICE
106 North Parkmont
PO Box 3388
Butte, MT 59702
(406) 533-7600
BLM_MT_Butte_FO@blm.gov

DILLON FIELD OFFICE
1005 Selway Drive
Dillon, MT 59725-9431
(406) 683-2337
BLM_MT_Dillon_FO@blm.gov

GLASGOW FIELD OFFICE
5 Lasar Drive
Glasgow, MT 59230
(406) 228-3750
BLM_MT_Glasgow_FO@blm.gov

GREAT FALLS OIL & GAS FIELD OFFICE
1101 15th Street North
Great Falls, MT 59401
(406) 791-7700
BLM_MT_Oil_and_Gas_Field_Office@blm.gov

HAVRE FIELD OFFICE
3990 Hwy 2 West
Havre, MT 59501
(406) 265-5891
BLM_MT_Havre_FO@blm.gov

LEWISTOWN FIELD OFFICE
920 NE Main Street
Lewistown, MT 59457
(406) 538-1900
BLM_MT_Lewistown_FO@blm.gov

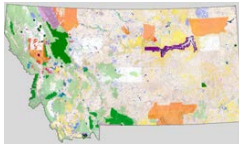
MALTA FIELD OFFICE
501 S. 2nd St E
Box B
Malta, MT 59538
(406) 654-5100
BLM_MT_Malta_FO@blm.gov

MILES CITY FIELD OFFICE
111 Garryowen Road
Miles City, MT 59301-0940
(406) 233-2800
BLM_MT_MilesCity_FO@blm.gov

MISSOULA FIELD OFFICE
3255 Fort Missoula Road
Missoula, MT 59804-7293
(406) 329-3914
BLM_MT_Missoula_FO@blm.gov



MONTANA PUBLIC ROOM (Maps and Recreation Resources):
http://www.blm.gov/mt/st/en/res/public_room.html



U.S. Fish & Wildlife Service

NATIONAL WILDLIFE REFUGES

MONTANA OFFICES

CHARLES M. RUSSELL NWR

PO Box 110
Airport Road
Lewistown, MT 59457-0110
(406) 538-8706
cmr@fws.gov

MEDICINE LAKE NWR

(Lamester)
223 N Shore Rd
Medicine Lake, MT 59247-9600
(406) 789-2305
medicinelake@fws.gov

BENTON LAKE NWR

922 Bootlegger Trail
Great Falls, MT 59404
(406) 727-7400
bentonlake@fws.gov

NATIONAL BISON RANGE

(Nine-Pipe, Pablo, Swan River, Lost Trail)
58355 Bison Range Rd
Moiese, MT 59824
(406) 644-2211
bisonrange@fws.gov

BOWDOIN NWR

(Black Coulee, Creedman Coulee, Hewitt Lake, Lake Thibadeau)
194 Bowdoin Auto Tour Rd
Malta, MT 59538
(406) 654-2863
bowdoin@fws.gov

RED ROCK LAKES NWR

27650B South Valley Rd
Lima MT, 59739
(406) 276-3536
redrocks@fws.gov

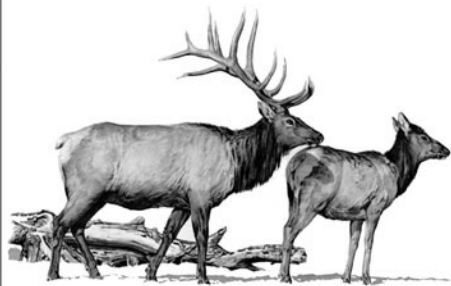
LEE METCALF NWR

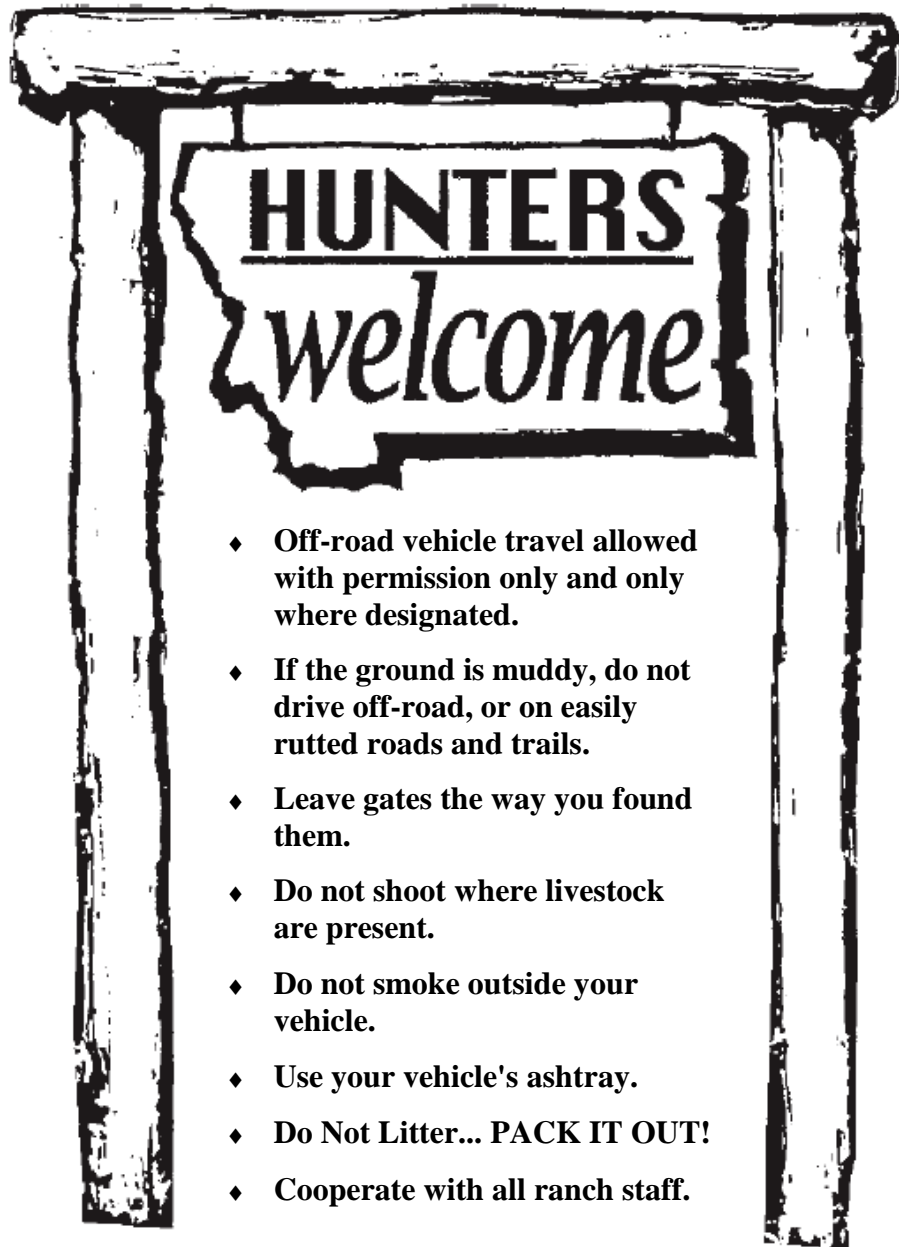
4567 Wildfowl Lane
Stevensville, MT 59870
(406) 777-5552
leemetcalf@fws.gov

<http://www.fws.gov/mountain-prairie/refuges/mt/>



NOTES





Remember to say Thanks!

7,000 copies of this public document were published at an estimated cost of \$x.xx per copy. For a total cost of \$x,xxx.xx.xx which includes \$x,xxx.xx for printing and \$0.00 for distribution.