



Fish Creek State Park

Public Scoping Summary

March 2013

Introduction

Montana State Parks initiated a management planning process for Fish Creek State Park beginning in 2012. This is the first management plan for the park, which was acquired by Montana Fish, Wildlife & Parks in 2010 as part of the Fish Creek acquisition from The Nature Conservancy. The management plan will only address the State Park, and not the adjacent wildlife management area (WMA). In addition, the plan will also look at recreational activities around the Alberton Gorge of the Clark Fork River, and strategies to continue to provide and enhance opportunities for the public over the coming years.

Fish Creek State Park provides a unique opportunity to support a variety of recreation activities including but not limited to hiking, picnicking, wildlife viewing, photography, snowshoeing, hunting and fishing. The park has an extensive network of old logging roads that could provide for motorized and non-motorized recreation as well. The park also hosts the Williams Peak Lookout, a potential rental opportunity for park visitors, and the possibility of developed and primitive camping. With the proximity to the Alberton Gorge, the park also provides access to whitewater rafting and kayaking.

Public Scoping Process

Public scoping is an early and open process to determine public concerns, values, and vision for a management plan. Following is a summary of the project and the feedback gathered through public scoping efforts.

Montana State Parks initiated the process with an open house on September 19, 2012 in Superior, MT. The purpose of the open house was to introduce the process and solicit initial public input on the management of Fish Creek State Park. A total of **29 people** signed in for the public scoping meeting. The majority of attendees were neighboring landowners and interested individuals. Notable attendees included Rep. Gordon Hendrick HD-14; Mark Sheets, candidate for SD-7; Tim Read, Mineral County Planner & Sanitarian; and a representative from DNRC. The meeting was videotaped for the Mineral County Commissioners, who could not attend in person.

At the open house, people were directed to four workstations for discussion and questions regarding the following themes: facilities, trails (motorized & non-motorized), recreational opportunities, and special uses.

Following the open house, public scoping efforts continued through February 15, 2013. Throughout the process, people were asked to consider the following questions:

- What is your vision for Fish Creek State Park?
- What do you value about the Park?
- What recreational uses are important to you?
- What are your concerns for future management of the Park?
- What opportunities would you like to see offered?
- What amenities/facilities would you like to see developed?

- What makes a quality recreational experience for you that Fish Creek State Park could provide?
- What improvements, if any, are desired for Alberton Gorge?

Montana State Parks distributed two news releases to local media and public information sources between September and January. News releases appeared in:

- The Missoulian
- Billings Gazette
- Great Falls Tribune
- Mineral County Independent
- Big Sky Press

Considerable effort was also given to reach out to user groups and organizations for more specific input and feedback, although not all contacts were successful in soliciting scoping comments. A one page information sheet was provided to organizations and posted on the Montana State Parks website. The following organizations and user groups were contacted during the scoping process:

- U.S. Forest Service – Lolo National Forest
- Glacier Country Tourism Board
- Alberton Gorge Commercial Guide Permit Holders
- Montana Mountain Bike Alliance
- MTB Missoula
- Backcountry Horseman of Missoula
- Montana Backcountry Hunters and Anglers
- Montana Trail Vehicle Riders Association
- Missoula Snowgoers Snowmobile Association
- Rocky Mountaineers
- Missoula Nordic Club
- The Nature Conservancy
- Montana Trout Unlimited
- Sierra Club
- Great Burn Study Group
- Wildlands CPR

Additional comments were received from neighboring landowners and interested individuals.

It should also be noted that during the acquisition of the Fish Creek drainage in 2010, an extensive public process was conducted for the environmental assessment (EA) of the acquisition. During that process, 71 people signed into a public hearing, with 11 people testifying on the acquisition. Additionally, 97 individuals or organizations provided public comments for the record during the 30-day comment period. While the Fish Creek management planning process builds upon the acquisition EA, this summary only pertains to the scoping specifically for Fish Creek State Park from September 2012 through February 15, 2013.

Public Scoping Themes

During the scoping period, Montana State Parks accepted comments several ways: oral comments captured on flipcharts at the open house; emails or letters sent to Montana State Parks; and discussions over the phone and in-person. In addition to the open house, 21 written comments were received during the scoping period of September 2012 to February 2013.

The following is a summary of the major themes and concerns outlined in the comments, with representative comments as appropriate. Specific comments from organizations are identified further on.

A. Recreational Opportunities

Comments emphasizing recreational opportunities spoke to the need to diversify recreation access and experiences in the area. Below are summaries regarding the specific opportunities referenced in the comments.

Camping: Comments received for camping were both in support and opposition to camping and campground development. Comments supporting camping felt a developed campground would be beneficial for the area, while comments opposing camping felt it would conflict with the conservation values of the adjacent WMA. Generally, the comments spoke to light to moderate level of campground development with minimal hardscaping. Many felt RV facilities would not be appropriate given the context of the park, the proximity to the WMA, and the rural character of county.

The following are representative comments that reflect the variety of ideas related to campgrounds, both in support and opposition:

- Camping should be developed near water and trails, with easy access to roads.
- Please develop a campground with basic facilities: tent pad, toilets, tables, fire pits. No elaborate RV park-like facilities.
- If developing RV sites, please provide separate camping areas for RVs and tents.
- Provide primitive, dispersed camping for backcountry used.
- Walk-in sites would appeal to cyclists.
- Consider car camping at Big Pine FAS.
- Leave Fish Creek as is per the EA: no vehicles or overnights, no campsites.
- Facilities should be limited to those appropriate to FWP primitive parks.
- Campsite should be small in scale and out of riparian areas and streams.
- No camping, day use only.
- Don't pave the park.

Related to camping, some comments felt the Williams Pass lookout provided a good opportunity for diversifying the recreation and overnight experience at Fish Creek State Park. Maintaining the road to the lookout was important to maintain access for all visitors. Conversely, some comments thought upgrading the lookout was a waste of money when the current road system is already so degraded.

Non-motorized Recreation: Non-motorized recreation was emphasized as the most compatible recreation activity among the majority of comments. As described by the comments, non-motorized recreation includes: hiking, mountain biking, cross-country skiing, and horseback riding. Non-motorized use should be segregated from any motorized use, and trails should be developed for

specific experiences, i.e. hiking only, mountain biking only, equestrian only. There is particular interest from the mountain biking community for recreation opportunities at Fish Creek State Park.

Motorized Recreation: Comments were received for both support and opposition to motorized recreation. Comments that support motorized recreation spoke to the growing demand in OHV riding and the need for more safe and legal trails. Supportive comments also highlight the importance of separating motorized recreation from non-motorized recreation to mitigate conflicts, as well as imposing seasonal restrictions to reduce wildlife and habitat disturbance. Generally, comments that emphasized conservation priorities were opposed to motorized recreation.

Trails: Trails were referenced by user groups and individuals as a unique opportunity at Fish Creek State Park, particularly among the mountain biking community. Non-motorized and motorized trails were mentioned, however non-motorized use received more support among the comments. Facilities to support trail use should include trailheads, kiosks, parking areas, restrooms, and staging areas. Connections should also be made between trailheads and camping areas to support non-motorized use. Comments more favorable to non-motorized trail use felt that as many roads as possible should be closed to motorized recreation or at least separate the uses to minimize conflicts. Trail access to the Clark Fork River was also highlighted as a potential opportunity. Loop trails were cited as particularly popular for providing high quality experiences for mountain bikers and OHV users. Many felt that a diversity of skill levels could be satisfied with a trail system.

Comments opposed to trails highlighted the need for road restoration throughout the park, and felt that there could be unintended incursions into the WMA and disturbances to wildlife. Enforcement was a big concern.

Hunting and Trapping: Comments received on hunting support hunting within the State Park, but trapping was met with both support and opposition. Generally, any potential conflicts with hunting should be mitigated with seasonal closures and safety zones around high use areas. Some comments would like to see commercial hunting instituted again.

Special Uses: Comments supportive of other special uses include firewood gathering and berry-picking.

B. Conservation Priorities

Comments emphasizing conservation priorities generally state that preserving or improving upon the area's current natural values should be the primary objective of park management. Conservation values highlighted include: the high quality of the Fish Creek ecosystem; wildlife habitat and corridors, particularly winter range habitat; riparian areas and water quality; fish habitat, particularly for bull trout and cutthroat trout; maintaining quality hunting opportunities; and connections to larger wilderness landscapes. With this, comments called for limited to no development, maintaining the rural character of the park (described as "primitive"), and embracing opportunities for solitude and quiet.

Related, a few comments were received that generally disapproved of state parks and maintained that the area should be managed as the Fish Creek WMA.

C. Economic Impact

A few comments received addressed economic impacts of the State Park, both positive and negative. Comments highlighting the economic benefits of the park felt that promotion and visitors could help spur economic growth in nearby communities, and draw people into the area for several days at a time. Many spoke to the need for a regional destination in the area, and thought the park and the potential trail system could serve as the destination, particularly as a mountain biking destination. The opportunity for year-round recreation was also highlighted as an economic benefit.

Comments were also concerned with the impacts to infrastructure and emergency services that the state park could place on Mineral County, like roads, bridges, and Search & Rescue. Mineral County does not have additional revenue to support increased services, and a strong concern was voiced regarding increased costs to the County.

Revenue sharing with the County was mentioned as one way to alleviate any increased costs to the County. Conversely, it was also suggested that the money generated by the State Park should stay within the park and support its operations and maintenance, not go to support the County.

D. Issues and Concerns

A number of issues and concerns were voiced at the open house and in the comments. Below is a general list of concerns.

Roads: The road grade is steep throughout Fish Creek State Park, and many were concerned about unsafe conditions, soil erosion from degraded roads, invasive weeds along roads, and general impacts to watershed health from the road system. Developing a travel management plan for assessing the road condition should be considered, as well as prioritizing restoration of roads unsuitable for travel. Long-term maintenance of interior park roads and thru-roads around the park were also strong concerns.

Weed Control: Many comments were concerned with the spread of invasive weeds, both throughout the park from increased use, as well as onto private land.

Increased visitation: Impacts related to increased visitation was a concern in regards to costs to Mineral County infrastructure and emergency services, overcrowding in the park and along the creek, over-fishing and impacts to fish levels, dust control, spreading of weeds, waste management control, enforcement, and trespassing onto private lands.

Enforcement: Enforcement issues were raised in regards to the potential increase in visitation and the limited staff presence at the park. Enforcement concerns were particularly expressed for regulating motorized recreation and ensuring a safe riding experience.

Motorized Recreation: Concerns associated with motorized recreation include soil erosion, illegal incursion into nearby wildlife and roadless areas, noise, conflicts with other uses, and the presence of steep road grades that create safety hazards.

Operations & Maintenance: Long-term costs associated with operations and maintenance was a concern due to the limited staff at the park and the high cost of construction to develop the park to a high quality standard.

Specific Comments from Organizations

Below are summarized comments from organizations:

U.S. Forest Service – Lolo National Forest

- There is a need for OHV and equestrian trails, but the level of sustained demand over time is questionable.
- There may be opportunities for longer OHV routes to the east of Fish Creek SP towards the divide country between Fish and Petty Creek drainages. There may also be loop options, circling back towards Fish Creek State Park down through Wall Canyon and Deer Creek drainages, which lie to the southeast of Fish Creek.
- Planning should consider where new supply of trail users will come from in regards to any trail development.

Glacier Country Tourism

- Fish Creek State Park could draw people into a location that isn't accessed much currently, and could provide a new and unique opportunity for recreation.
- Focus should be on trails, both motorized and non-motorized uses.
- Would like to see Montana State Parks develop formal partnerships with public land managers to access additional trail systems, as well as generate and foster relationships with user groups.
- There is a strong economic benefit with Fish Creek, as an increase in visitation means an increase in visitors in the community.

Montana Mountain Biking Alliance & MTB Missoula

- There is a need for mountain biking trails in the Missoula area. A good quality trail system will motivate bikers to visit Fish Creek State Park, both as new and return trail users. Every generation can benefit from a good trail system at the park.
- We would like to stress the importance of being able to provide a loop trail system to the public, specifically a Stacked Loop Trail concept, designed for travel both uphill and downhill directions.
- A Stacked Loop concept could range from 14 to 21 miles long, with a lower loop, a middle loop, and an upper loop. Connections between the loops would allow for trail customization. This trail system could support beginner to more advanced mountain bikers.
- Don't necessarily need mountain biking-only trails, but those are desirable and important for making a destination location.
- Downhill trails are also in high demand, but only cater to more specialized cyclists.
- Facilities to support mountain biking use should include a developed campground with easy access to main roads and connections to trailheads, walk-in campsites, staging area for day users, and other trailhead amenities.
- MTB Missoula in particular highlighted their efforts to promote responsible mountain biking, as well as their partnership potential to cultivate volunteers for Fish Creek, trail

design and planning expertise, and fundraising abilities. MTB Missoula is the local mountain biking community in the Missoula area.

Montana Trail Vehicle Riders Association

- Fish Creek State Park is a great opportunity for many different kinds of recreation. With the large number of ATVs in Missoula County, there is a growing need to have designated ATV routes in western Montana.
- OHV routes should be closed from October 15 to May 15 for hunting season, to reduce soil erosion, and limit wildlife disturbances. A route could be left open for handicap riders.
- Roads currently closed to full size vehicles could be altered to accommodate OHVs that are 50 inches and less. We do not propose to close any open roads.
- Suggested opportunities include loop routes.
- OHV trails with an emphasis on safety for kids and families should be the priority. Beginning riders will be safer on designated OHV routes, and families with young riders can learn about safety and ethical riding.

The Nature Conservancy

- As planning moves forward for the 6,200 acre Fish Creek State Park, we urge that focus remains on the ecological characteristics such as critical winter range, a corridor for movement of forest carnivores and important habitat for native bull and cutthroat trout.
- There is also tremendous support for continued primitive use of the area by local residents and visitors for hunting, fishing and dispersed camping opportunities.

Montana Trout Unlimited

- Given the extraordinary fish, wildlife and recreational values in the drainage, we recommend that the park be managed similarly to those parks the Montana Legislature has designated as “primitive parks” (MCA 23-1-116). Improvements should be limited to the minimum necessary to protect the natural resources of the parks while still providing recreational access.
- We are especially concerned about recreational development that could potentially reduce the value of the park and WMA as critical winter range for big game and as important habitat for resident and migratory populations of bull and cutthroat trout.
- We recommend development and recreational promotion occur only at levels that will not create potential recreational conflicts, overcrowding, or which demands large investment in long-term maintenance and management. Recreation should be focused on wildlife and current use, including wildlife viewing, hunting, angling and berry picking.
- We are reluctant to endorse construction of a developed campground, particularly for those who primarily float the Alberton Gorge. If a campground must be constructed, it should be small and located at the lower end of the park and away from the stream. Facilities should be limited to those appropriate to FWP primitive parks.
- The following should not be approved: development within the Rock Creek drainage; development except for mitigation efforts at Big Pine FAS; motorized trail use; and a hut-to-hut hiking system which would be costly and underutilized. Trail and some road improvements, with minimal signing, would be appropriate.

Great Burn Study Group

- Our most pressing concern is about protecting wildlife and wilderness values for Fish Creek and for the proposed Great Burn Wilderness. We urge FWP to place priority on wildlife and aquatic resources for Fish Creek State Park.
- We are concerned about enforcement in the state park, particularly related to motorized use that could result in illegal incursions into the proposed Wilderness.
- We question the level of development of the park and the potential recreational use.

The Rocky Mountaineers

- We would recommend developing formal trailheads with signage, parking lots, and restrooms.
- We would encourage you to keep as few roads open as possible to be used for hiking, skiing, and biking.
- Close as many roads as possible to motorized recreation, but if going to allow motorized recreation than separate the use from non-motorized recreation.

Missoula Nordic Club

- Would be interested in skiing opportunities around Williams Peak, starting from the top of the pass.
- Desire loop trails with a variety of ups, downs, and turns.

Backcountry Horseman of Missoula

- I'm contacting you to advocate for an equestrian trailhead and appropriate trails open to horses and hikers in this new state park. I would especially be interested in a trail system that will connect trails in the West Fork Fish Creek drainage.

Montana Backcountry Hunters & Anglers

- We envision the priority management to be for protection and enhancement of wildlife and fish habitat.
- We encourage continued reduction of motorized routes, and do not support additional motorized access routes nor encourage motorized recreational activities.
- The area could accommodate minimal, generally dispersed low impact recreational uses that do not conflict with wildlife, fish, nor management objectives of adjacent federal lands. Any development should be small in scale and out of riparian areas and streams.
- We request no management or development that conflicts with proposed wilderness designation of the Great Burn.

Appendix A. Press Releases

Public Invited to Scoping Workshop on Fish Creek State Park

-Wednesday, Sept. 19

(Missoula, MT) – Montana State Parks (stateparks.mt.gov) has scheduled a public scoping workshop in Superior on Sept. 19 to begin developing a plan to guide the management of Fish Creek State Park, located near Alberton.

The public is invited to offer suggestions and comments on how to achieve a high-quality recreational experience at the park, while preserving and enhancing the park's natural resources. The feedback will be used in developing a management plan for the park.

Montana Fish, Wildlife & Parks acquired Fish Creek State Park in 2010 as part of a larger acquisition along Fish Creek. This plan will only address the State Park, and not the adjacent wildlife management area.

"Fish Creek State Park is a unique park with the potential to be a regional destination for hiking, biking, OHV use, camping, and more," said Park Manager, Mike Hathaway. "We want the public to weigh in and help craft the vision for the park in this first step toward a ten-year management plan."

State park officials will also be asking for suggestions on ways to enhance recreational activities around the nearby Alberton Gorge of the Clark Fork River.

Montana State Parks prepares management plans for state parks to guide quality recreational experiences, enhance park resources, and preserve the park's natural assets.

The workshop is set for 6:30-8:30 p.m., Wednesday, Sept. 19, at Superior High School in the Multi-Purpose Room, 410 Arizona Avenue, Superior, MT.

Written feedback may also be sent by email to: mhathaway@mt.gov, or by mail to: Attn: Fish Creek State Park, 3201 Spurgin Road, Missoula, MT 59804.

The Fish Creek State Park draft management plan will be released in 2013 and there will be opportunities for public review and comment.

Fish Creek State Park is made up of 6,200 acres of forested land surrounding Williams Peak in Mineral County, with portions of the Clark Fork and Fish Creek rivers running through it. Open year-round, park activities include hiking, mountain biking, hunting, fishing, and nature viewing. The Alberton Gorge of the Clark Fork River, with first-rate whitewater rafting, is nearby.

Visit Montana State Parks (stateparks.mt.gov) and enjoy camping, hiking, fishing, swimming, boating and more and discover some of the greatest natural and cultural treasures on earth.

Connect with [Montana State Parks](#) on Facebook
Twitter [@MTStateParks](#)

-###-

Public Asked to Provide Ideas on Recreation Planning for Fish Creek State Park

-Deadline is Friday, Feb. 15-

(Helena, MT) – Montana State Parks (stateparks.mt.gov) announced today it is seeking the public's input to help guide recreation planning for [Fish Creek State Park](#), located about 35 miles west of Missoula. This public scoping will help identify priorities for the park's first management plan.

"Fish Creek State Park is a unique location with great potential due to its recreational trail system and close proximity to Alberton Gorge," said Mike Hathaway, Park Manager.

Recreational activities identified by the public and interested user groups in earlier scoping include year-round hiking, mountain biking, horseback riding, motorized use and winter activities. Other opportunities include developed and backcountry camping, fishing, hunting and wildlife viewing. Landscape conservation and management is also a priority.

"We want to involve as many people as possible in helping shape this park's future," Hathaway said.

Among the questions Montana State Parks is asking:

- What is your vision for Fish Creek State Park?
- What do you value about the Park?
- What recreational uses are important to you?
- What amenities/facilities would you like to see developed?
- What improvements, if any, are desired at the nearby Alberton Gorge, also managed by Montana State Parks?

Fish Creek State Park encompasses 6,200 acres of forested land surrounding Williams Peak in Mineral County, with portions of the Clark Fork and Fish Creek rivers running through it.

The Fish Creek State Park draft management plan is expected to be available for public review later this year.

For more information about Fish Creek State Park, go to <http://stateparks.mt.gov/fish-creek/>.

Comments may be emailed through Friday, Feb. 15 to Mike Hathaway, Fish Creek State Park Manager: mhathaway@mt.gov, or mailed to: Montana State Parks, Attn: Fish Creek State Park, 3201 Spurgin Rd., Missoula, MT 59804.

Visit Montana State Parks (stateparks.mt.gov) and enjoy camping, hiking, fishing, swimming, boating and more and discover some of the greatest natural and cultural treasures on earth.

Connect with [Montana State Parks](#) on Facebook
Twitter [@MTStateParks](#)

-###-

Appendix B. Public Scoping Open House Meeting Notes

Date: September 19, 2012

Location: Superior High School, Superior, MT

Time: 6:30 – 8:30 pm

A total of **29 people** signed in for the Fish Creek SP public scoping meeting. The majority of attendees were neighboring landowners and general citizens. Notable attendees included Rep. Gordon Hendrick HD-14; Mark Sheets, candidate for SD-7; Tim Read, Mineral County Planner & Sanitarian; and a representative from DNRC. The meeting was videotaped for the Mineral County Commissioners, who could not attend in person.

Following an introductory presentation, people were directed to four workstations for discussion and questions: facilities, trails, recreational opportunities, and special uses. The following is a list of input, feedback, concerns, and suggestions we received during the meeting.

Facilities

- Fire lookout
 - Improve for rental property
 - Mineral County could get a portion of fees from rental revenue
- Consider rural setting for the park during any development
- Camping
 - Developed campground would be nice
 - Previously identified location from acquisition is not a good location → referred to as “Whitetail Flats”
 - Camping should be developed near water, trails, with easy access to roads
 - Coordinate campground with Alberton Gorge corridor activities
 - Provide primitive camping for backcountry
 - Consider car camping at Big Pine
- Mineral County Search & Rescue is underfunded
 - County will need help for any increase in use from improvements

Trails

- Mountain Biking
 - Trail loops should be around 10 miles for a partial day ride
 - Single track with built-in trail features to challenge rider abilities
 - Bicycle access to trails
 - New trails for river access
 - Embrace bicycle tourism as a focus for the park
- Desire non-motorized hiking trails that are separate from motorized trails
- Major thru-roads
 - Will roads be closed in the winter?
 - Whose responsibility for dust control, maintenance?
 - Consider best roads for park access that don't limit or invade private property

- Fish Creek Road by Cyr Ranch needs adjusting
- Support closing of “cut-off” road between Rock Creek Rd. (7764) and USFS 341 as indicated in interim management plan
 - Consider turning into hiking trail
 - Keep road and structure, possibly gate for access
- Possibility of trail connection from FS 4320/343 junction area East-Northeast towards lower contour road from Hay Creek drainage
- Look at possibility of connecting trails from State Park to public lands outward (to NF lands)
- Designate hiking trails to loops and destinations
- Provide a connection to the river

Recreational Opportunities

- Provide opportunities for people of all accessibility levels
 - Berry-picking
 - Hunting
 - Trails
- Will the park have seasonal or year-round use?
- Hunting:
 - Keep hunting and trapping opportunities open
 - Provide diversity of walk-in and drive-in hunting
 - Close off hunting in high use areas only
 - Preserve mule deer and elk opportunities
 - Implement wildlife closures when and where necessary to maintain populations
- Motorized recreation:
 - Would like to see trails open in winter for snowmobiling
 - Interested in quality 4-wheeler trail loops
 - Concerns expressed to turning whole park over to OHV use
 - Better to focus OHV use in specific areas instead of open riding
- Non-motorized recreation:
 - Separate motorized and non-motorized use
 - Develop hiking-specific trails
- Berry-picking used to be good, but weed control has ruined crop
- River along northwest border is cut-off by railroad tracks
 - Concerns expressed that people might try to get to river in an unsafe manner
- Sandy beach at confluence of Fish Creek and Clark Fork River is over-utilized by rafters
 - Creates a sanitary issue
 - Would like to see beach cleaned up and managed better

Special Uses

- Firewood gathering should be continued
 - All neighbors use wood for heating
- Is there a way for the County to receive a % of special use revenue?
- Manage park for historic/traditional local uses

Other Issues

- Funding: Who is going to pay for improvements/developments of the park? Can we afford it?
- Economic Benefit: Can the park provide revenue to Mineral County?
- Infrastructure & Services: Concerned about effects of park development on County
- Further Acquisition: Is Montana State Parks considering acquiring more land for the park, or considering land trades?
- Weed Control

Appendix C. Fish Creek Scoping Information Sheet & Map

Montana State Parks is preparing a management plan for Fish Creek State Park. This is the first management plan for the park, which was acquired by Montana Fish, Wildlife & Parks in 2010 as part of the Fish Creek acquisition. The management plan will only address the State Park, and not the adjacent wildlife management area. In addition, the plan will also look at recreational activities around the Alberton Gorge of the Clark Fork River, and strategies to continue to provide and enhance opportunities for the public over the coming years.

Background

Fish Creek State Park provides a unique opportunity to support a variety of recreation activities including but not limited to hiking, picnicking, wildlife viewing, photography, snowshoeing, hunting and fishing. The park has an extensive network of old logging roads that could provide for motorized and non-motorized recreation as well. The park also hosts the Williams Peak Lookout, a potential rental opportunity for park visitors, and the possibility of developed and primitive camping. With the proximity to the Alberton Gorge, the park also provides access to whitewater rafting and kayaking.

What is important to you?

Montana State Parks is interested in your input on Fish Creek State Park. A public scoping meeting was held on September 19 in Superior, MT to solicit initial input on Fish Creek. From the meeting, four overarching themes have been identified related to management of Fish Creek.

1. Trails (motorized & non-motorized)
2. Recreational Opportunities
3. Facilities
4. Special Uses

Planning Timeline	
Summer 2012	Information Gathering
Fall 2012	Public Scoping workshop
Winter 2013	Analyze public input and develop draft plan
Spring 2013	Release draft plan for public comment
Summer 2013	Finalize, approval, and public notice

Based on these themes, please consider the following questions:

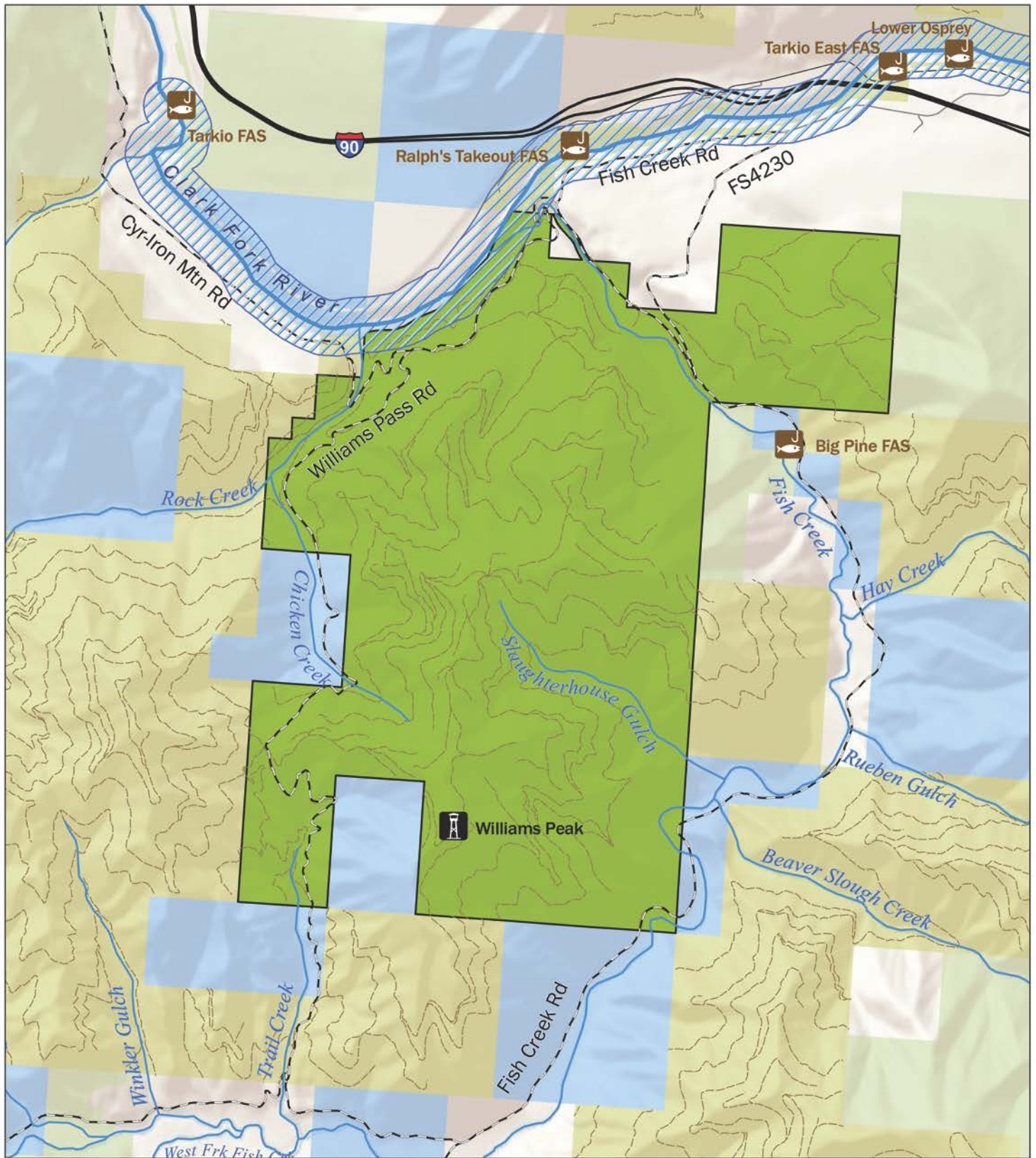
- What is your vision for Fish Creek State Park?
- What do you value about the Park?
- What recreational uses are important to you?
- What are your concerns for future management of the Park?
- What opportunities would you like to see offered?
- What amenities/facilities would you like to see developed?
- What makes a quality recreational experience for you that Fish Creek State Park could provide?
- What improvements, if any, are desired for Alberton Gorge?

For timely consideration of your input, please provide feedback by February 15, 2013. For more information, visit www.stateparks.mt.gov/fish-creek/.

Contacts:

Mike Hathaway, Park Manager
mhathaway@mt.gov, 406-542-5500

Maren Murphy, Parks & Recreation Planner
marenmurphy@mt.gov, 406-444-3750



Fish Creek State Park

- | | |
|--|---|
|  Fish Creek State Park |  Interstate 90 |
|  Alberton Gorge |  County or Other Public Road |
|  Wildlife Management Area (FWP) |  Logging Road |
|  Montana State Trust Lands (DNRC) |  Fishing Access Site |
|  US Forest Service - Lolo National Forest |  Fire Lookout Tower |

