

# 2012 Montana Wolf Hunting Season Report



**Montana Fish,  
Wildlife & Parks**

## About the Wolf Season

- ❖ Seasons: Regular archery 9/1 – 10/14; Backcountry archery 9/1 – 9/14; General rifle 10/15 – 2/28; Backcountry rifle 9/15 – 2/28; Trapping 12/15 – 2/28.
- ❖ Hunters took 128 wolves and trappers took 97; only one wolf was harvested with archery equipment.
- ❖ Season modifications
  - Nov. 8, a new regulation to minimize non-target captures required a minimum 8 lb. trap pan tension in Regions 1 & 2.
  - Feb. 13, House Bill 73 becomes law and hunters permitted to purchase up to 3 wolf licenses.
- ❖ Wolf Management Unit harvests:

WMU	Hunter	Trapper	Total
100	9	11	20
101	8	18	26
110 (quota 2)	1		1
121	10	7	17
130	11	5	16
150	3		3
200	10	11	21
210	3	4	7
250	8	8	16
280	4		4
290	5	12	17
310	19	3	22
316 (quota 3)	2		2
320	3		3
330	5		5
390	22	4	26
400	5	14	19
<b>Total</b>	<b>128</b>	<b>97</b>	<b>225</b>

## Wolf Hunting

- ❖ 123 resident and 3 nonresident hunters harvested wolves.
- ❖ 31 percent of respondents hunted primarily for elk or deer.
  - 84 wolves taken during Archery/General; 76 percent opportunistically.
  - 141 wolves taken after Arch/Gen; 62 percent opportunistically.
- ❖ 46 percent of respondents hunted primarily for wolves.
  - 6.5 days avg. of hunting respondents
  - 17 days avg. of trapping respondents
- ❖ 45 percent of hunters used calls

- ❖ Number bagged:
  - 124 hunters took 1 wolf.
  - 2 hunters took 2 wolves.
  - No hunter took 3 wolves.
- ❖ 18,889 wolf licenses were issued (18,642 resident; 247 nonresident)
- ❖ Approximately 15% of resident deer and elk hunters purchased a wolf license.
- ❖ License cost: \$19 Resident; \$350/(\$50 after February 13) Non-Resident

## Wolf Trapping

- ❖ 2,414 trappers completed the Wolf Trapper Education course and were certified to trap wolves in Montana; approximately 1,500 purchased a trapping license.
- ❖ 62 trappers took one wolf
- ❖ 13 trappers took 2 wolves
- ❖ 3 trappers took 3 wolves

## Harvested Wolves

- ❖ 48% on federal land; 3% on state land; 37% on private land.
- ❖ Wolves were harvested from approximately 60 different packs.

### Age & Sex

- ❖ Adult 123; 55 percent
- ❖ Juvenile 44; 20 percent
- ❖ Yearling 30; 13 percent
- ❖ Unknown 28; 12 percent
- ❖ 117 Females
- ❖ 108 Males

### Avg. Weight

- ❖ Adult avg. 84 lbs.; max 120 lbs.
- ❖ Juvenile avg. 72 lbs.; max 100 lbs.

### Color

- ❖ Black 53
- ❖ Gray 141
- ❖ Gray 141
- ❖ White 3
- ❖ Unknown 28

### Reported Health

- ❖ 21 with one or combination of mange, worn or broken teeth, fleas, worms, gashes, injuries to paws or legs, and one with a bobbed tail.

# 2012 Montana Wolf Hunting Season Report



## 2012 Gray Wolf Hunting Season Harvest Locations

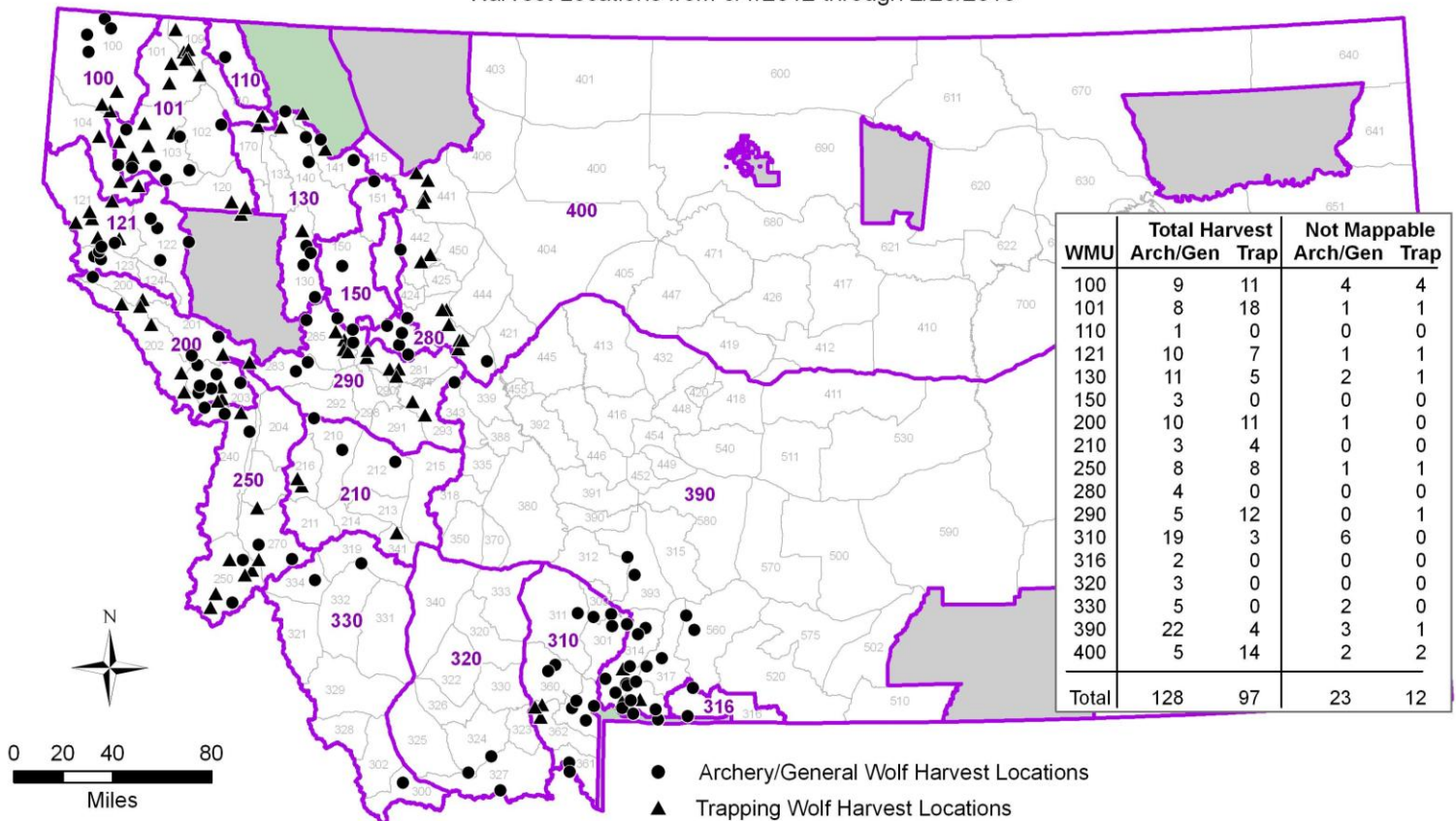
Of the statewide harvest, 84 percent came from:

The other counties include:

County	Hunter	Trapper	Total
Lincoln	14	24	38
Park	20	4	24
Missoula	11	11	22
Sanders	11	7	18
Flathead	11	6	17
Gallatin	17		17
L & C	8	8	16
Ravalli	6	8	14
Powell	5	7	12
Mineral	6	6	12

County	Hunter	Trapper	Total
Lake	3	4	7
Beaverhead	7		7
Teton	1	5	6
Madison	3	3	6
Granite	2	2	4
Jefferson	1		1
Silver Bow		1	1
Carbon	1		1
Pondera		1	1
Deer Lodge	1		1

Harvest Locations from 9/1/2012 through 2/28/2013



NOTE:  
 - Some points have been moved up to 5 miles from actual harvest location for display purposes  
 - Reflects harvests reported and checked as of 3/1/2013

● Archery/General Wolf Harvest Locations  
 ▲ Trapping Wolf Harvest Locations  
 □ Gray Wolf Management Units (WMU)  
 □ 2012 Deer/Elk Hunting Districts

