

2013 Montana Wolf Hunting Season Report



About the Wolf Season

- ❖ Season closed Mar. 15, 230 total wolves harvested; 143 hunted and 87 trapped.
- ❖ Season modifications
 - General Season extended to March 15th.
 - An increased bag limit of 5 in any total combination of general or trap.
 - Regions 1-5 require a minimum pan tension of 10 pounds to reduce incidental captures of lynx, wolverines, and other non-target species.

❖ Wolf Management Unit harvests:

| WMU | Hunter | Trapper | Total |
|--------------------|------------|-----------|------------|
| 100 | 17 | 11 | 28 |
| 101 | 19 | 19 | 38 |
| 110 | 1 | - | 1 |
| 121 | 11 | 5 | 16 |
| 130 | 8 | 10 | 18 |
| 200 | 5 | 10 | 15 |
| 210 | 13 | 4 | 17 |
| 250 | 10 | 10 | 20 |
| 280 | 2 | - | 2 |
| 290 | 9 | 7 | 16 |
| 310 | 11 | 2 | 13 |
| 313 | 4 | - | 4 |
| 316 | 2 | - | 2 |
| 320 | 3 | - | 3 |
| 330 | 8 | 1 | 9 |
| 390 | 14 | 2 | 16 |
| 400 | 6 | 6 | 12 |
| Grand Total | 143 | 87 | 230 |

Wolf Hunting

- ❖ 180 resident and 8 nonresident hunters harvested wolves.
 - 51 of 58 wolves (88%) during Archery/General season were taken opportunistically.
- ❖ 9 of percent of hunters used calls (13 hunters).
- ❖ Avg. Distance Shot: 181 yards (68 hunters).

- ❖ Number harvested:
 - 119 hunters took 1 wolf.
 - 9 hunters took 2 wolves.
 - 1 hunter took 3 wolves.
 - 2 hunter took 1 wolf by hunting & 1 by trapping.
 - 1 hunter took 1 wolf by hunting & 2 trapping.
- ❖ Three hunters harvested a wolf with archery equipment.
- ❖ 24,479 wolf licenses were issued (22,169 resident; 2,310 nonresident).

Wolf Trapping

- ❖ 37 trappers took one wolf.
- ❖ 13 trappers took 2 wolves.
- ❖ 4 trappers took 3 wolves.
- ❖ 2 trappers took 4 wolves.

Harvested Wolves

- ❖ 43% on federal land; 13% on state land; 40% on private land (4% unknown).
- ❖ Wolves were harvested from approximately 46 different packs.

Sex

- ❖ 119 Females
- ❖ 111 Males

Color

- ❖ Gray 147
- ❖ Black 56
- ❖ White 7
- ❖ Unknown 20

Reported Health

- ❖ 24 with one or combination of mange, worn or broken teeth, fleas, worms, gashes, injuries to paws or legs, and one with a bobbed tail.

2013 Montana Wolf Hunting Season Report



2013 Gray Wolf Hunting Season Harvest Locations

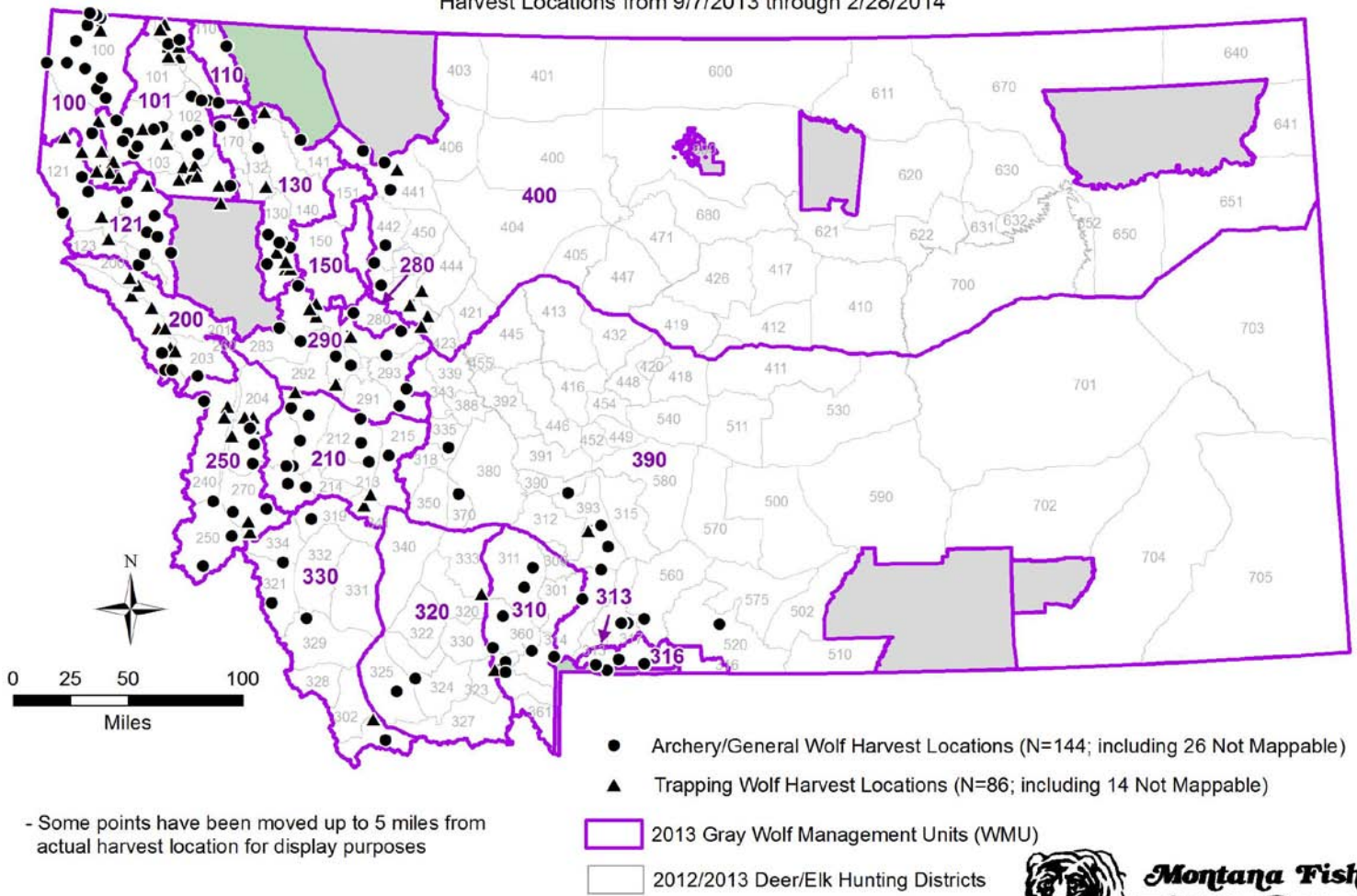
Of the statewide harvest, 84 percent came from:

The other counties include:

| County | Hunter | Trapper | Total |
|----------|--------|---------|-------|
| Lincoln | 25 | 21 | 46 |
| Flathead | 15 | 10 | 25 |
| Ravalli | 10 | 10 | 20 |
| Sanders | 11 | 6 | 17 |
| Park | 15 | 1 | 16 |
| Powell | 8 | 6 | 14 |
| Mineral | 4 | 9 | 13 |
| Missoula | 5 | 7 | 12 |
| Granite | 10 | 1 | 11 |
| L & C | 6 | 5 | 11 |

| County | Hunter | Trapper | Total |
|------------|--------|---------|-------|
| Beaverhead | 9 | 1 | 10 |
| Gallatin | 7 | 1 | 8 |
| Madison | 6 | 2 | 8 |
| Lake | 4 | 3 | 7 |
| Teton | 2 | 1 | 3 |
| Silver Bow | - | 3 | 3 |
| Jefferson | 2 | - | 2 |
| Pondera | 2 | - | 2 |
| Deer Lodge | 1 | - | 1 |
| Stillwater | 1 | - | 1 |

Harvest Locations from 9/7/2013 through 2/28/2014



- Some points have been moved up to 5 miles from actual harvest location for display purposes

