

Session Name: R1 public

Date Created: 8/12/2015 5:43:18 PM

Active Participants: 38 of 38

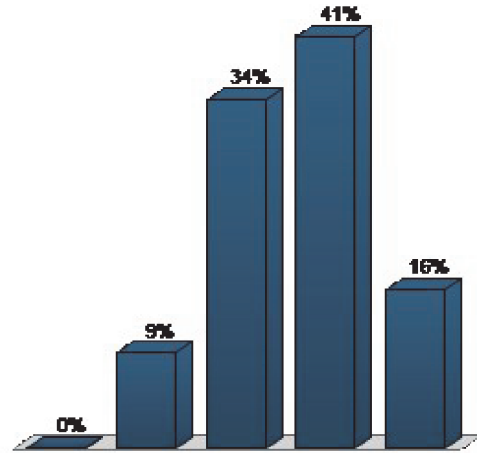
Average Score: 0.00%

Questions: 23

## Results by Question

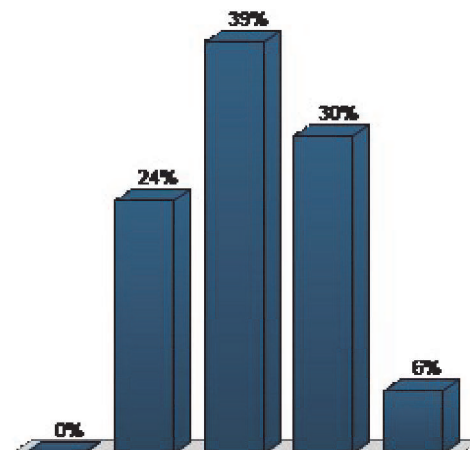
1. To what extent do you agree or disagree with the following statement: I know a lot about FWP. (Multiple Choice)

	Responses	
	Percent	Count
Strongly disagree	0%	0
Disagree	9.38%	3
Neither disagree or agree	34.38%	11
Agree	40.62%	13
Strongly agree	15.62%	5
<b>Totals</b>	<b>100%</b>	<b>32</b>



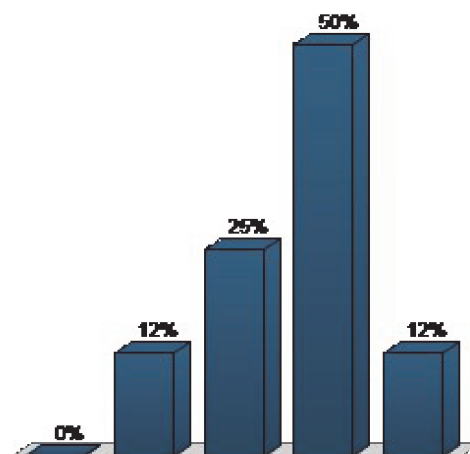
2. To what extent do you agree or disagree with the following statement: FWP adequately involves the public when making important decisions. (Multiple Choice)

	Responses	
	Percent	Count
Strongly disagree	0%	0
Disagree	24.24%	8
Neither disagree or agree	39.39%	13
Agree	30.3%	10
Strongly agree	6.06%	2
<b>Totals</b>	<b>100%</b>	<b>33</b>



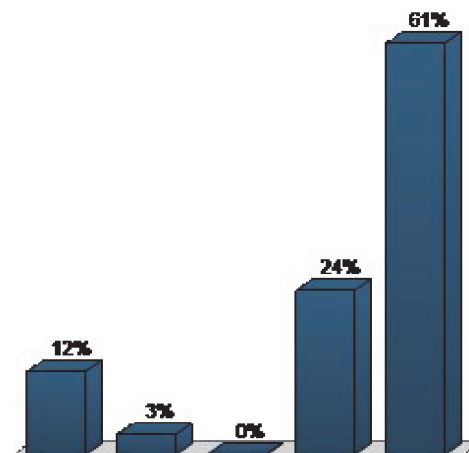
3. To what extent do you agree or disagree with the following statement: FWP does a good job of listening to all points of view offered by the public. (Multiple Choice)

	Responses	
	Percent	Count
Strongly disagree	0%	0
Disagree	12.5%	4
Neither disagree or agree	25%	8
Agree	50%	16
Strongly agree	12.5%	4
<b>Totals</b>	<b>100%</b>	<b>32</b>



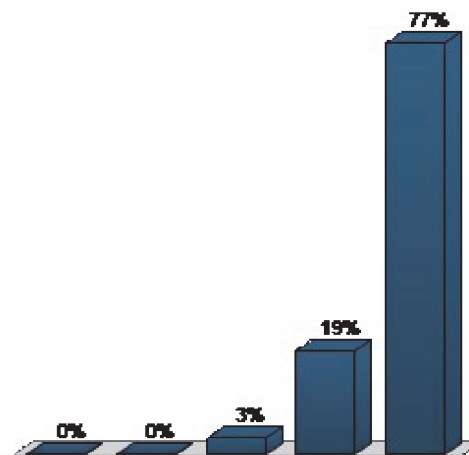
4. To what extent do you agree or disagree with the following statement: Montana’s fish, wildlife, and parkresources and the opportunitiesthey afford are something everyMontanan benefits from. (Multiple Choice)

	Responses	
	Percent	Count
Strongly disagree	12.12%	4
Disagree	3.03%	1
Neither disagree or agree	0%	0
Agree	24.24%	8
Strongly agree	60.61%	20
<b>Totals</b>	<b>100%</b>	<b>33</b>



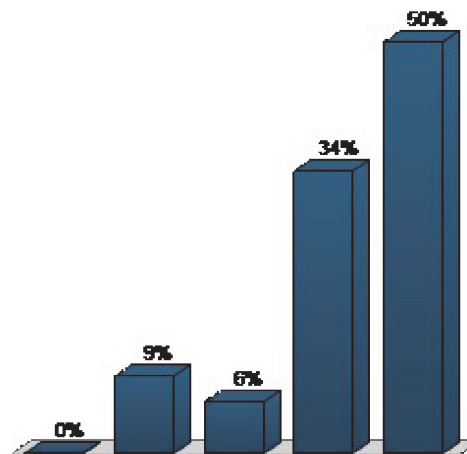
5. To what extent do you agree or disagree with the following statement: Conserving Montana’s fish, wildlife,and park resources for the futureis a responsibility that allMontanans should share. (Multiple Choice)

	Responses	
	Percent	Count
Strongly disagree	0%	0
Disagree	0%	0
Neither disagree or agree	3.23%	1
Agree	19.35%	6
Strongly agree	77.42%	24
<b>Totals</b>	<b>100%</b>	<b>31</b>



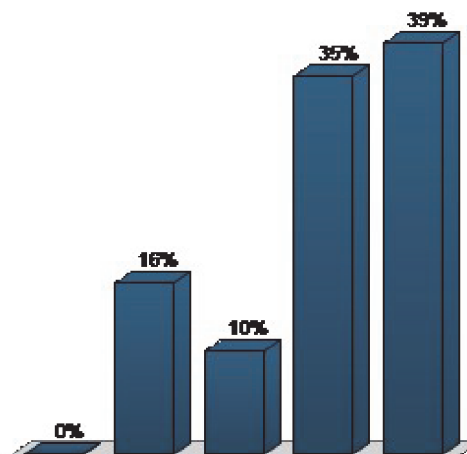
6. On a scale of 1 (none) to 5 (a lot), how much experience do you have:... interacting with FWP and its employees? (Multiple Choice)

Responses		
	Percent	Count
None	0%	0
	9.38%	3
	6.25%	2
	34.38%	11
A lot	50%	16
	<b>100%</b>	<b>32</b>
<b>Totals</b>	<b>100%</b>	<b>32</b>



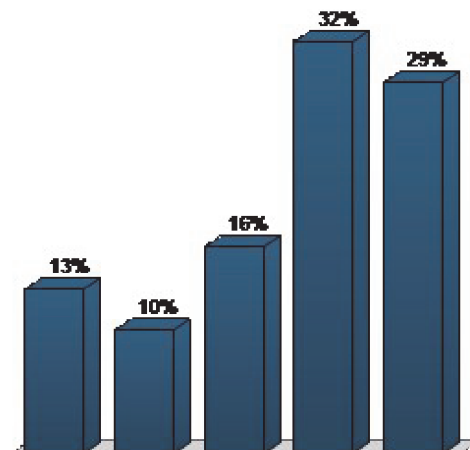
7. On a scale of 1 (none) to 5 (a lot), how much experience do you have:... seeking out information about what FWP is doing? (Multiple Choice)

Responses		
	Percent	Count
None	0%	0
	16.13%	5
	9.68%	3
	35.48%	11
A lot	38.71%	12
	<b>100%</b>	<b>31</b>
<b>Totals</b>	<b>100%</b>	<b>31</b>



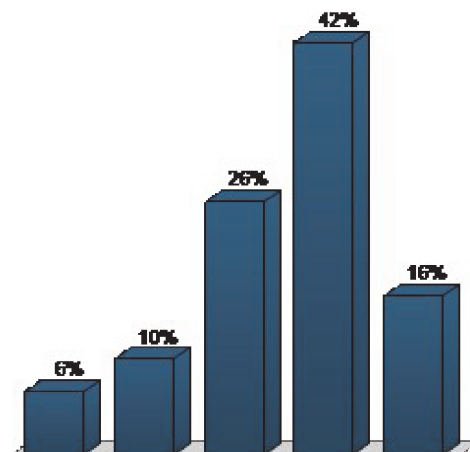
8. On a scale of 1 (none) to 5 (a lot), how much experience do you have:... providing input to FWP, the Fish and Wildlife Commission, and/or the Parks Board regarding fish, wildlife, and/or park related issues? (Multiple Choice)

Responses		
	Percent	Count
None	12.9%	4
	9.68%	3
	16.13%	5
	32.26%	10
	29.03%	9
<b>Totals</b>	<b>100%</b>	<b>31</b>



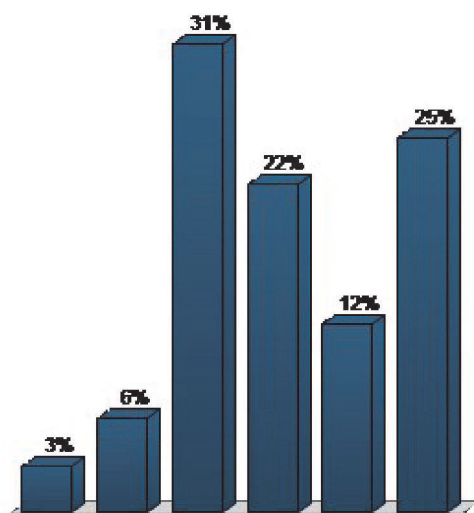
9. On a scale of 1 to 5, how would you rate FWP's reputation? (Multiple Choice)

Responses		
	Percent	Count
Poor	6.45%	2
	9.68%	3
	25.81%	8
	41.94%	13
Excellent	16.13%	5
	<b>100%</b>	<b>31</b>



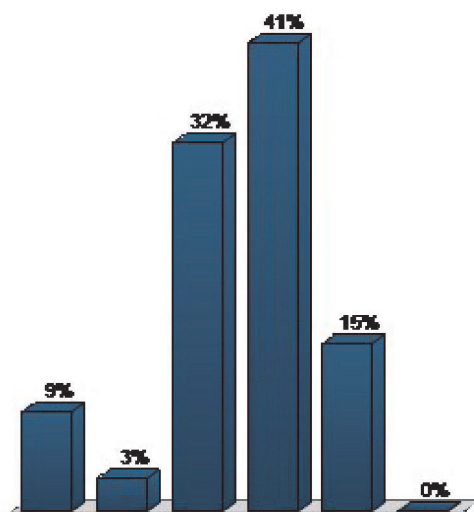
10. On a scale of 1 to 5, how would you rate FWP’s reputation among anglers? (Multiple Choice)

Responses		
	Percent	Count
Poor	3.12%	1
	6.25%	2
	31.25%	10
Excellent	21.88%	7
	12.5%	4
	25%	8
I don’t know		
<b>Totals</b>	<b>100%</b>	<b>32</b>



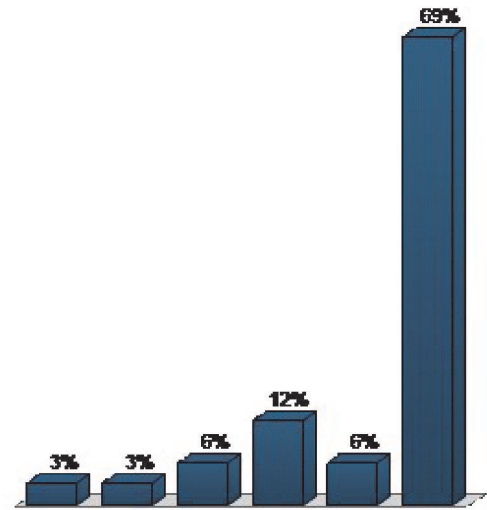
11. On a scale of 1 to 5, how would you rate FWP’s reputation among hunters? (Multiple Choice)

Responses		
	Percent	Count
Poor	8.82%	3
	2.94%	1
	32.35%	11
Excellent	41.18%	14
	14.71%	5
	0%	0
I don’t know		
<b>Totals</b>	<b>100%</b>	<b>34</b>



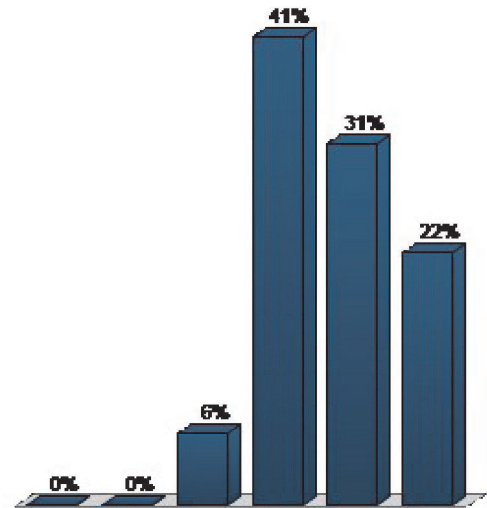
12. On a scale of 1 to 5, how would you rate FWP’s reputation among trappers? (Multiple Choice)

Responses		
	Percent	Count
Poor	3.12%	1
	3.12%	1
Excellent	6.25%	2
	12.5%	4
I don’t know	6.25%	2
	68.75%	22
<b>Totals</b>	<b>100%</b>	<b>32</b>



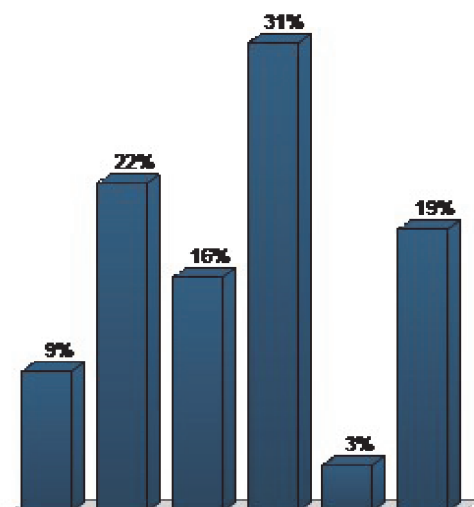
13. On a scale of 1 to 5, how would you rate FWP’s reputation among state park users? (Multiple Choice)

Responses		
	Percent	Count
Poor	0%	0
	0%	0
Excellent	6.25%	2
	40.62%	13
I don’t know	31.25%	10
	21.88%	7
<b>Totals</b>	<b>100%</b>	<b>32</b>



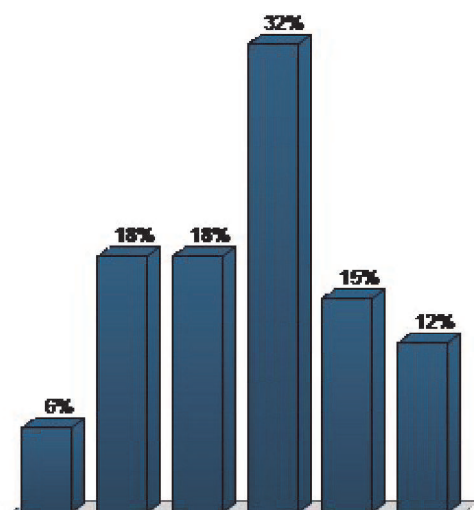
14. On a scale of 1 to 5, how would you rate FWP's reputation among rural private landowners? (Multiple Choice)

Responses		
	Percent	Count
Poor	9.38%	3
	21.88%	7
	15.62%	5
	31.25%	10
Excellent	3.12%	1
I don't know	18.75%	6
<b>Totals</b>	<b>100%</b>	<b>32</b>



15. On a scale of 1 to 5, how would you rate FWP's reputation among people who don't hunt and/or fish but enjoy Montana's fish and wildlife resources nonetheless? (Multiple Choice)

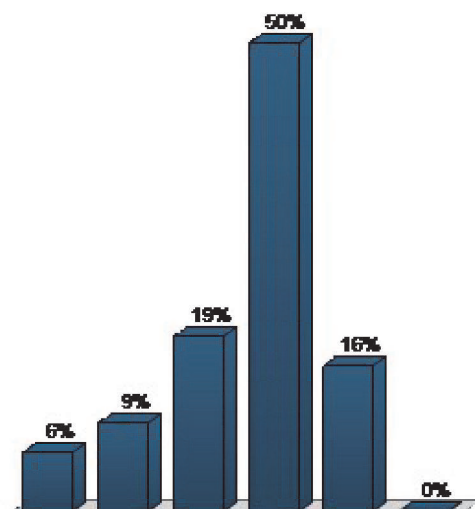
Responses		
	Percent	Count
Poor	5.88%	2
	17.65%	6
	17.65%	6
	32.35%	11
Excellent	14.71%	5
I don't know	11.76%	4
<b>Totals</b>	<b>100%</b>	<b>34</b>





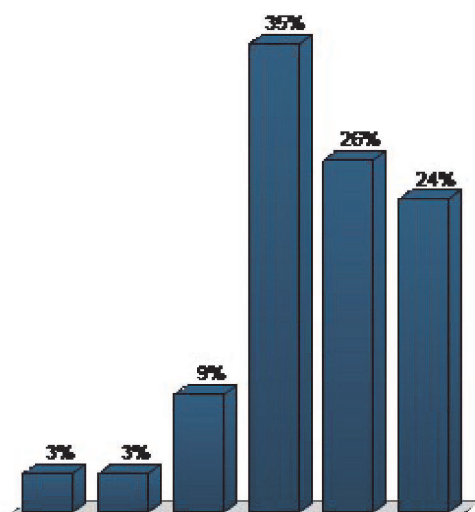
16. On a scale of 1 to 5, how would you rate FWP’s reputation among Montanans in general? (Multiple Choice)

Responses		
	Percent	Count
Poor	6.25%	2
	9.38%	3
	18.75%	6
	50%	16
Excellent	15.62%	5
I don’t know	0%	0
<b>Totals</b>	<b>100%</b>	<b>32</b>



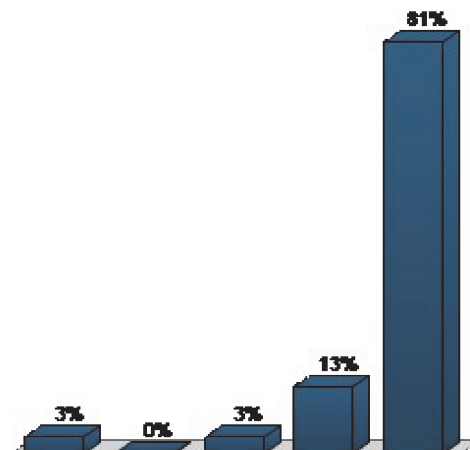
17. On a scale of 1 to 5, how would you rate FWP’s reputation among nonresidents that visit Montana to recreate? (Multiple Choice)

Responses		
	Percent	Count
Poor	2.94%	1
	2.94%	1
	8.82%	3
	35.29%	12
Excellent	26.47%	9
I don’t know	23.53%	8
<b>Totals</b>	<b>100%</b>	<b>34</b>



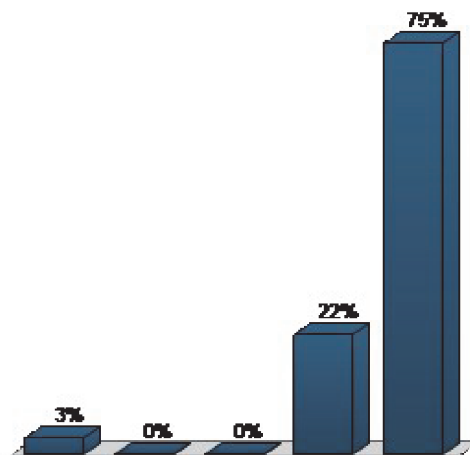
18. To what extent do you agree or disagree that the following should be a guiding principle for FWP: FWP will maintain the long-term viability of Montana’s natural,cultural and recreational resources. (Multiple Choice)

Responses		
	Percent	Count
Strongly disagree	3.23%	1
Disagree	0%	0
Neither disagree or agree	3.23%	1
Agree	12.9%	4
Strongly agree	80.65%	25
<b>Totals</b>	<b>100%</b>	<b>31</b>



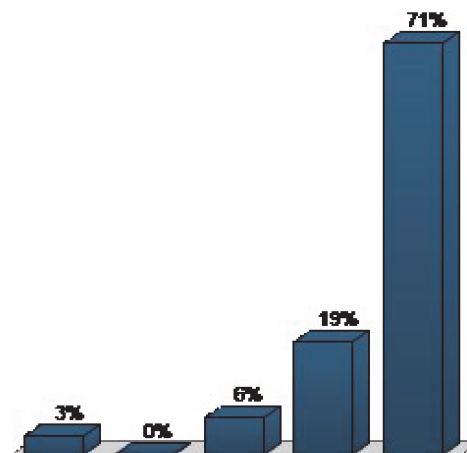
19. Should the following be a guiding principle for FWP: FWP will actively involve people in decisions that affect them; help people to participate by providing them with credible and objective information; and, develop programs with a clear understanding of public expectations for FWP service. (Multiple Choice)

Responses		
	Percent	Count
Strongly disagree	3.12%	1
Disagree	0%	0
Neither disagree or agree	0%	0
Agree	21.88%	7
Strongly agree	75%	24
<b>Totals</b>	<b>100%</b>	<b>32</b>



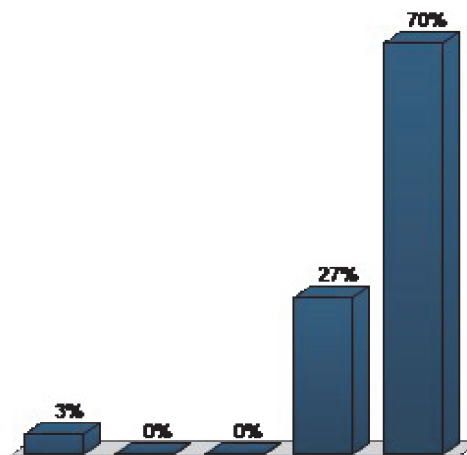
**20. Should the following be a guiding principle for FWP: FWP will serve as an advocate for responsible management and equitable allocation of public use of the limited resources they are entrusted to manage. (Multiple Choice)**

Responses		
	Percent	Count
Strongly disagree	3.23%	1
Disagree	0%	0
Neither disagree or agree	6.45%	2
Agree	19.35%	6
Strongly agree	70.97%	22
<b>Totals</b>	<b>100%</b>	<b>31</b>



**21. Should the following be a guiding principle for FWP: FWP will manage fish, wildlife, and recreation resources with pride in Montana's hunting, angling, and outdoor heritage. (Multiple Choice)**

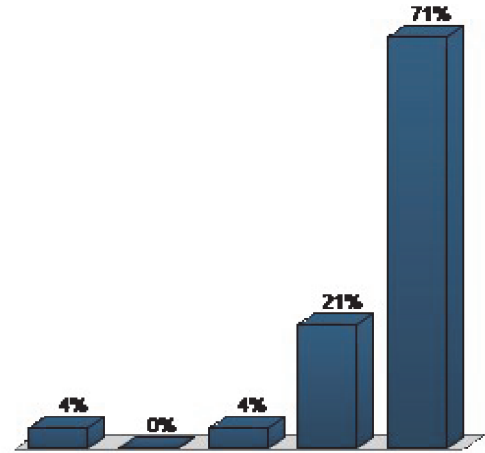
Responses		
	Percent	Count
Strongly disagree	3.33%	1
Disagree	0%	0
Neither disagree or agree	0%	0
Agree	26.67%	8
Strongly agree	70%	21
<b>Totals</b>	<b>100%</b>	<b>30</b>



22. Should the following be a guiding principle for FWP: FWP will create and strengthen working partnerships with individuals, organized groups and other natural, historic, and cultural resource management agencies.

(Multiple Choice)

Responses		
	Percent	Count
Strongly disagree	3.57%	1
Disagree	0%	0
Neither disagree or agree	3.57%	1
Agree	21.43%	6
Strongly agree	71.43%	20
<b>Totals</b>	<b>100%</b>	<b>28</b>



23. Should the following be a guiding principle for FWP: FWP will use innovation and technology to improve their services. (Multiple Choice)

Responses		
	Percent	Count
Strongly disagree	0%	0
Disagree	0%	0
Neither disagree or agree	3.12%	1
Agree	25%	8
Strongly agree	71.88%	23
<b>Totals</b>	<b>100%</b>	<b>32</b>

