

Session Name: R4 public

Date Created: 7/28/2015 5:45:29 PM

Active Participants: 17 of 17

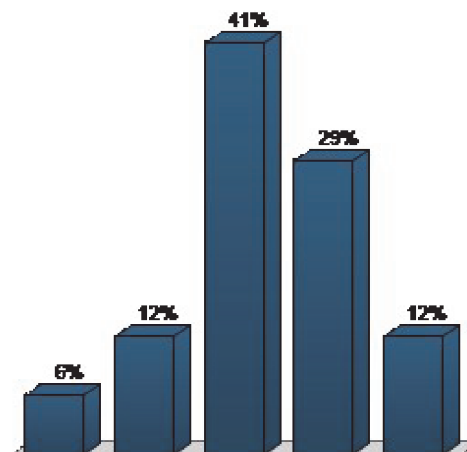
Average Score: 0.00%

Questions: 23

## Results by Question

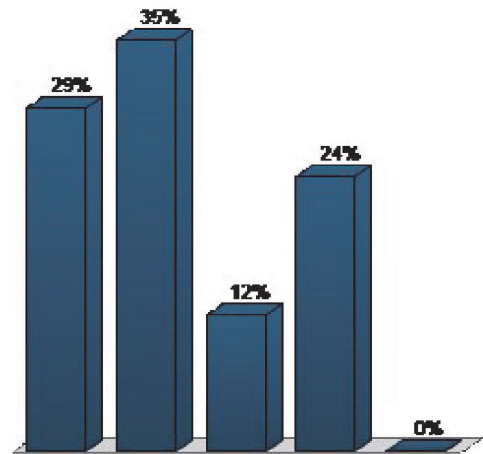
1. To what extent do you agree or disagree with the following statement: I know a lot about FWP. (Multiple Choice)

	Responses	
	Percent	Count
Strongly disagree	5.88%	1
Disagree	11.76%	2
Neither disagree or agree	41.18%	7
Agree	29.41%	5
Strongly agree	11.76%	2
<b>Totals</b>	<b>100%</b>	<b>17</b>



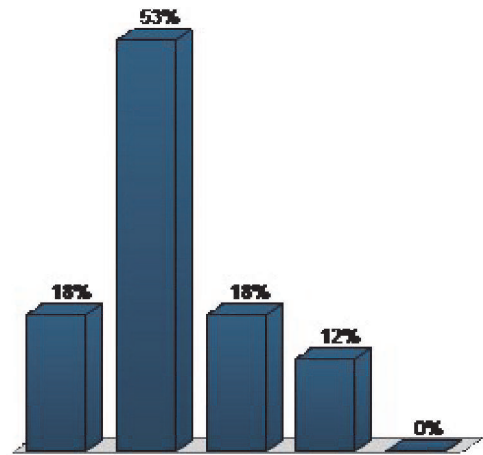
2. To what extent do you agree or disagree with the following statement: FWP adequately involves the public when making important decisions. (Multiple Choice)

	Responses	
	Percent	Count
Strongly disagree	29.41%	5
Disagree	35.29%	6
Neither disagree or agree	11.76%	2
Agree	23.53%	4
Strongly agree	0%	0
<b>Totals</b>	<b>100%</b>	<b>17</b>



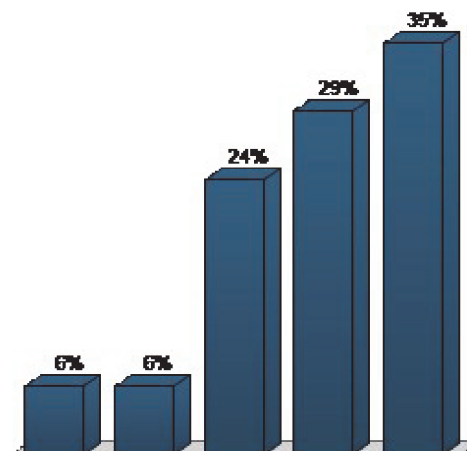
3. To what extent do you agree or disagree with the following statement: FWP does a good job of listening to all points of view offered by the public. (Multiple Choice)

	Responses	
	Percent	Count
Strongly disagree	17.65%	3
Disagree	52.94%	9
Neither disagree or agree	17.65%	3
Agree	11.76%	2
Strongly agree	0%	0
<b>Totals</b>	<b>100%</b>	<b>17</b>



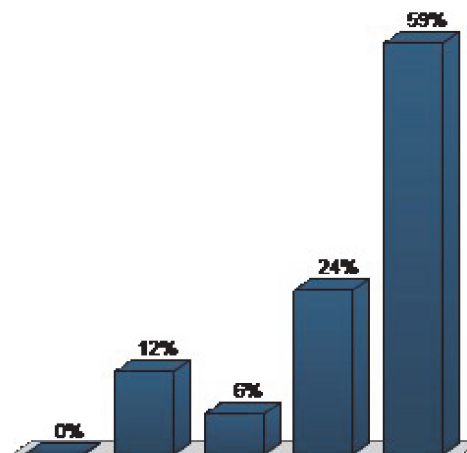
4. To what extent do you agree or disagree with the following statement: Montana’s fish, wildlife, and parkresources and the opportunitiesthey afford are something everyMontanan benefits from. (Multiple Choice)

	Responses	
	Percent	Count
Strongly disagree	5.88%	1
Disagree	5.88%	1
Neither disagree or agree	23.53%	4
Agree	29.41%	5
Strongly agree	35.29%	6
<b>Totals</b>	<b>100%</b>	<b>17</b>



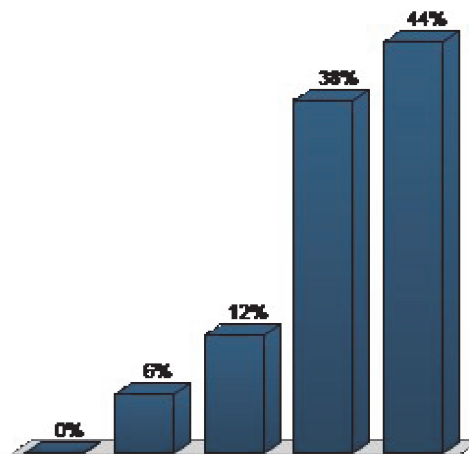
5. To what extent do you agree or disagree with the following statement: Conserving Montana’s fish, wildlife,and park resources for the futureis a responsibility that allMontanans should share. (Multiple Choice)

	Responses	
	Percent	Count
Strongly disagree	0%	0
Disagree	11.76%	2
Neither disagree or agree	5.88%	1
Agree	23.53%	4
Strongly agree	58.82%	10
<b>Totals</b>	<b>100%</b>	<b>17</b>



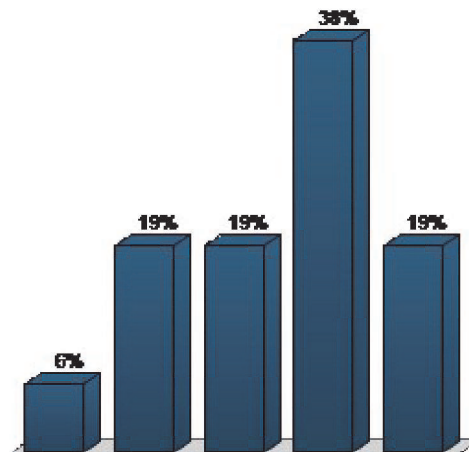
6. On a scale of 1 (none) to 5 (a lot), how much experience do you have:... interacting with FWP and its employees? (Multiple Choice)

Responses		
	Percent	Count
None	0%	0
	6.25%	1
	12.5%	2
	37.5%	6
A lot	43.75%	7
	<b>100%</b>	<b>16</b>



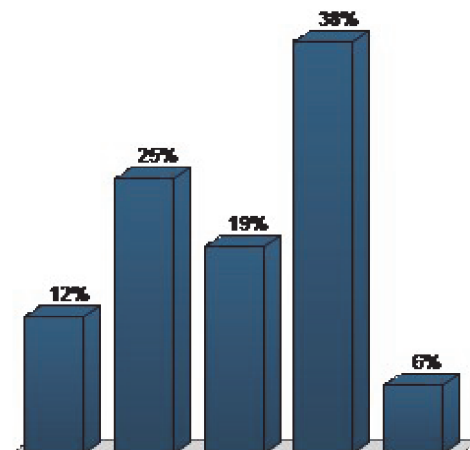
7. On a scale of 1 (none) to 5 (a lot), how much experience do you have:... seeking out information about what FWP is doing? (Multiple Choice)

Responses		
	Percent	Count
None	6.25%	1
	18.75%	3
	18.75%	3
	37.5%	6
A lot	18.75%	3
	<b>100%</b>	<b>16</b>



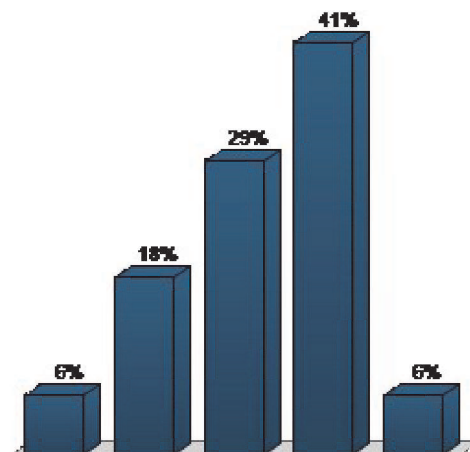
8. On a scale of 1 (none) to 5 (a lot), how much experience do you have:... providing input to FWP, the Fish and Wildlife Commission, and/or the Parks Board regarding fish, wildlife, and/or park related issues? (Multiple Choice)

Responses		
	Percent	Count
None	12.5%	2
	25%	4
	18.75%	3
	37.5%	6
A lot	6.25%	1
	<b>100%</b>	<b>16</b>
<b>Totals</b>		



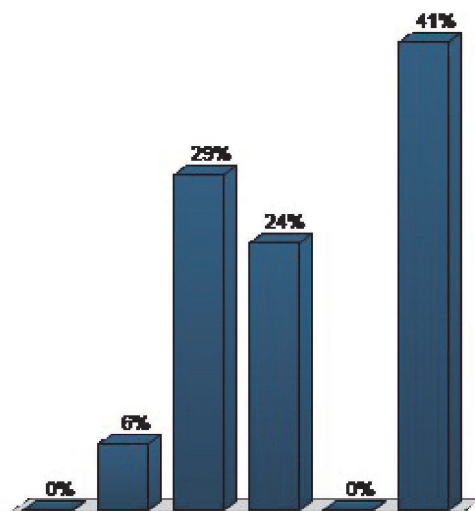
9. On a scale of 1 to 5, how would you rate FWP's reputation? (Multiple Choice)

Responses		
	Percent	Count
Poor	5.88%	1
	17.65%	3
	29.41%	5
	41.18%	7
Excellent	5.88%	1
	<b>100%</b>	<b>17</b>
<b>Totals</b>		



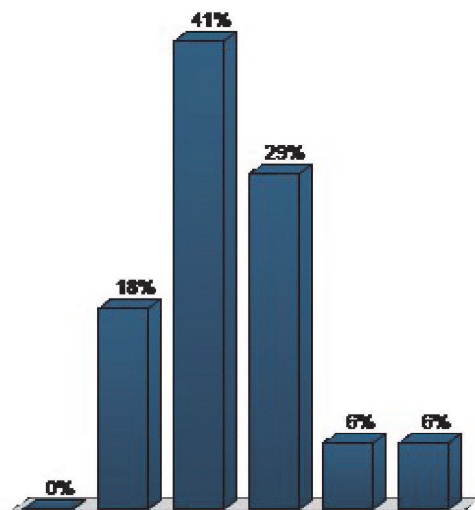
10. On a scale of 1 to 5, how would you rate FWP’s reputation among anglers? (Multiple Choice)

Responses		
	Percent	Count
Poor	0%	0
	5.88%	1
	29.41%	5
	23.53%	4
Excellent	0%	0
I don’t know	41.18%	7
<b>Totals</b>	<b>100%</b>	<b>17</b>



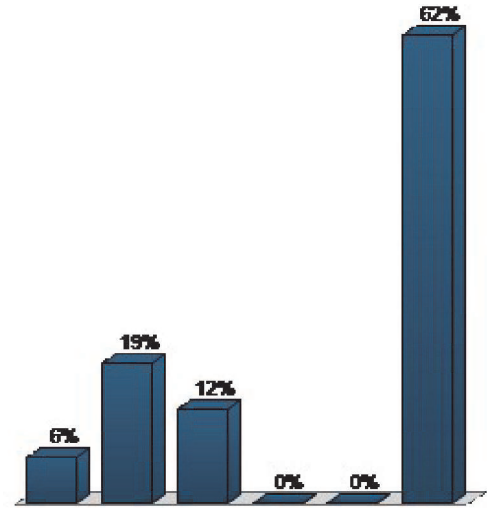
11. On a scale of 1 to 5, how would you rate FWP’s reputation among hunters? (Multiple Choice)

Responses		
	Percent	Count
Poor	0%	0
	17.65%	3
	41.18%	7
	29.41%	5
Excellent	5.88%	1
I don’t know	5.88%	1
<b>Totals</b>	<b>100%</b>	<b>17</b>



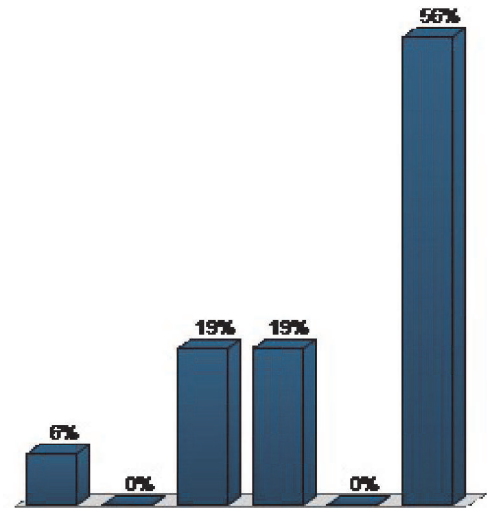
12. On a scale of 1 to 5, how would you rate FWP’s reputation among trappers? (Multiple Choice)

Responses		
	Percent	Count
Poor	6.25%	1
	18.75%	3
	12.5%	2
Excellent	0%	0
	0%	0
	62.5%	10
I don’t know		
<b>Totals</b>	<b>100%</b>	<b>16</b>



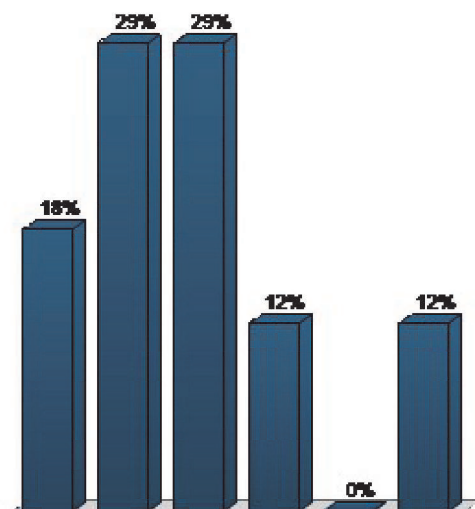
13. On a scale of 1 to 5, how would you rate FWP’s reputation among state park users? (Multiple Choice)

Responses		
	Percent	Count
Poor	6.25%	1
	0%	0
	18.75%	3
Excellent	18.75%	3
	0%	0
	56.25%	9
I don’t know		
<b>Totals</b>	<b>100%</b>	<b>16</b>



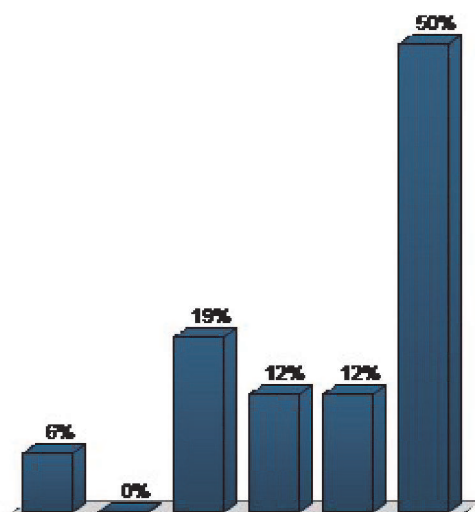
14. On a scale of 1 to 5, how would you rate FWP’s reputation among rural private landowners? (Multiple Choice)

Responses		
	Percent	Count
Poor	17.65%	3
	29.41%	5
	29.41%	5
	11.76%	2
	0%	0
Excellent	0%	0
I don’t know	11.76%	2
<b>Totals</b>	<b>100%</b>	<b>17</b>



15. On a scale of 1 to 5, how would you rate FWP’s reputation among people who don’t hunt and/or fish but enjoy Montana's fish and wildlife resources nonetheless? (Multiple Choice)

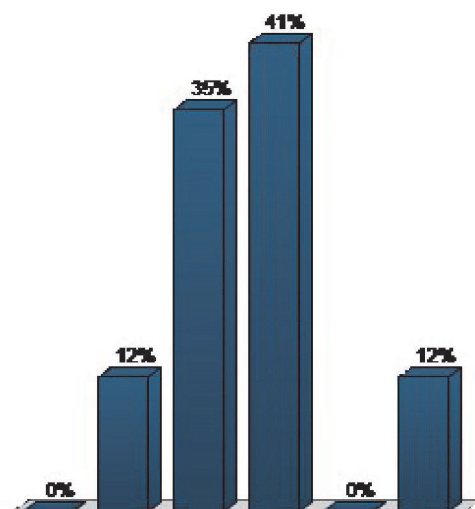
Responses		
	Percent	Count
Poor	6.25%	1
	0%	0
	18.75%	3
	12.5%	2
	12.5%	2
Excellent	12.5%	2
I don’t know	50%	8
<b>Totals</b>	<b>100%</b>	<b>16</b>





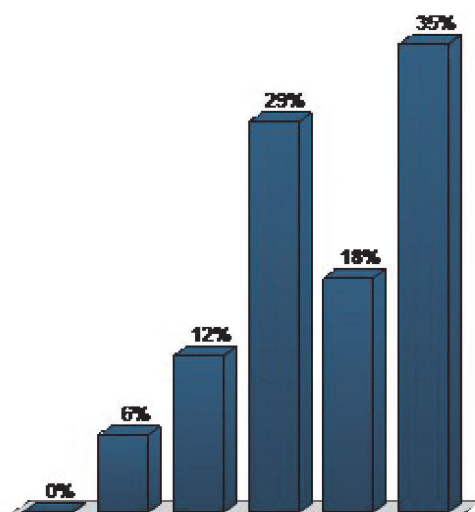
16. On a scale of 1 to 5, how would you rate FWP’s reputation among Montanans in general? (Multiple Choice)

Responses		
	Percent	Count
Poor	0%	0
	11.76%	2
	35.29%	6
	41.18%	7
Excellent	0%	0
I don’t know	11.76%	2
<b>Totals</b>	<b>100%</b>	<b>17</b>



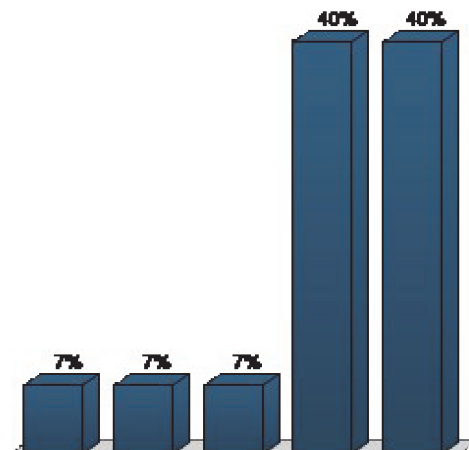
17. On a scale of 1 to 5, how would you rate FWP’s reputation among nonresidents that visit Montana to recreate? (Multiple Choice)

Responses		
	Percent	Count
Poor	0%	0
	5.88%	1
	11.76%	2
	29.41%	5
Excellent	17.65%	3
I don’t know	35.29%	6
<b>Totals</b>	<b>100%</b>	<b>17</b>



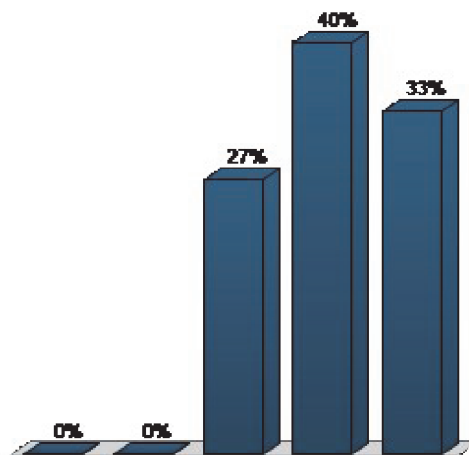
18. To what extent do you agree or disagree that the following should be a guiding principle for FWP: FWP will maintain the long-term viability of Montana’s natural,cultural and recreational resources. (Multiple Choice)

Responses		
	Percent	Count
Strongly disagree	6.67%	1
Disagree	6.67%	1
Neither disagree or agree	6.67%	1
Agree	40%	6
Strongly agree	40%	6
<b>Totals</b>	<b>100%</b>	<b>15</b>



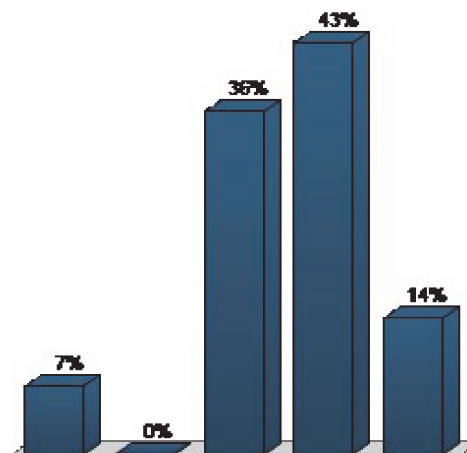
19. Should the following should be a guiding principle for FWP: FWP will actively involve people in decisions that affect them; help people to participate by providing them with credible and objective information; and, develop programs with a clear understanding of public expectations for FWP service. (Multiple Choice)

Responses		
	Percent	Count
Strongly disagree	0%	0
Disagree	0%	0
Neither disagree or agree	26.67%	4
Agree	40%	6
Strongly agree	33.33%	5
<b>Totals</b>	<b>100%</b>	<b>15</b>



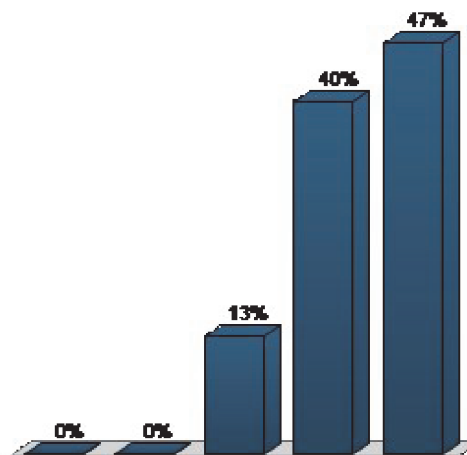
20. Should the following should be a guiding principle for FWP: FWP will serve as an advocate for responsible management and equitable allocation of public use of the limited resources they are entrusted to manage. (Multiple Choice)

Responses		
	Percent	Count
Strongly disagree	7.14%	1
Disagree	0%	0
Neither disagree or agree	35.71%	5
Agree	42.86%	6
Strongly agree	14.29%	2
<b>Totals</b>	<b>100%</b>	<b>14</b>



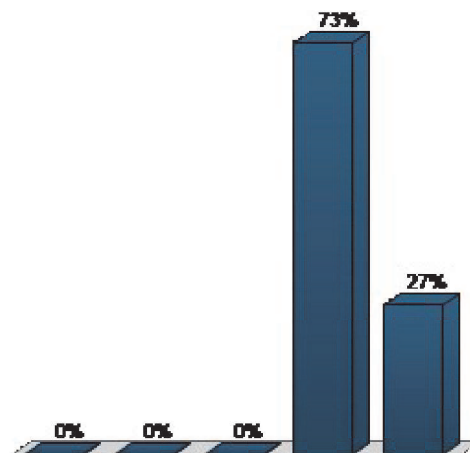
21. Should the following should be a guiding principle for FWP: FWP will manage fish, wildlife, and recreation resources with pride in Montana's hunting, angling, and outdoor heritage. (Multiple Choice)

Responses		
	Percent	Count
Strongly disagree	0%	0
Disagree	0%	0
Neither disagree or agree	13.33%	2
Agree	40%	6
Strongly agree	46.67%	7
<b>Totals</b>	<b>100%</b>	<b>15</b>



22. Should the following should be a guiding principle for FWP: FWP will create and strengthen working partnerships with individuals, organized groups and other natural, historic, and cultural resource management agencies. (Multiple Choice)

Responses		
	Percent	Count
Strongly disagree	0%	0
Disagree	0%	0
Neither disagree or agree	0%	0
Agree	73.33%	11
Strongly agree	26.67%	4
<b>Totals</b>	<b>100%</b>	<b>15</b>



23. Should the following should be a guiding principle for FWP: FWP will use innovation and technology to improve their services. (Multiple Choice)

Responses		
	Percent	Count
Strongly disagree	0%	0
Disagree	0%	0
Neither disagree or agree	0%	0
Agree	26.67%	4
Strongly agree	73.33%	11
<b>Totals</b>	<b>100%</b>	<b>15</b>

