

Session Name: R5 public

Date Created: 7/20/2015 6:45:36 PM

Active Participants: 19 of 19

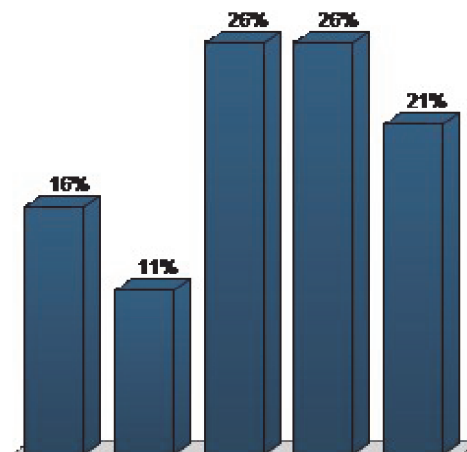
Average Score: 0.00%

Questions: 23

Results by Question

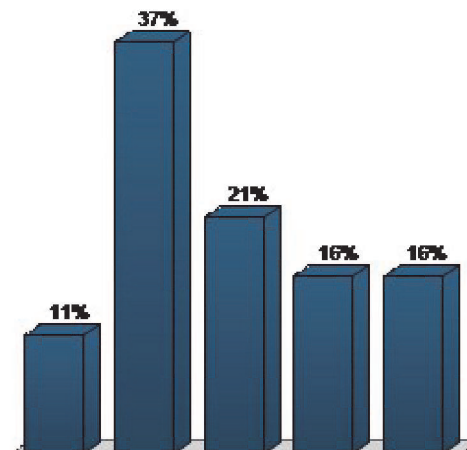
1. To what extent do you agree or disagree with the following statement: I know a lot about FWP. (Multiple Choice)

	Responses	
	Percent	Count
Strongly disagree	15.79%	3
Disagree	10.53%	2
Neither disagree or agree	26.32%	5
Agree	26.32%	5
Strongly agree	21.05%	4
Totals	100%	19



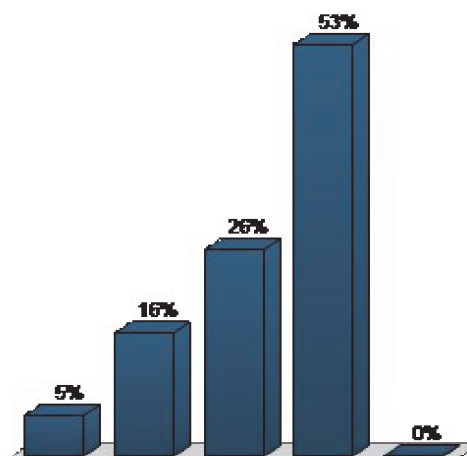
2. To what extent do you agree or disagree with the following statement: FWP adequately involves the public when making important decisions. (Multiple Choice)

	Responses	
	Percent	Count
Strongly disagree	10.53%	2
Disagree	36.84%	7
Neither disagree or agree	21.05%	4
Agree	15.79%	3
Strongly agree	15.79%	3
Totals	100%	19



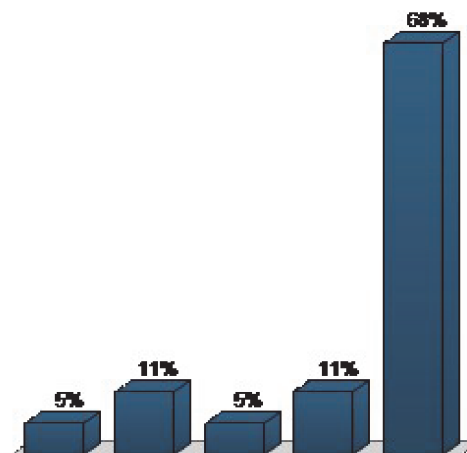
3. To what extent do you agree or disagree with the following statement: FWP does a good job of listening to all points of view offered by the public. (Multiple Choice)

	Responses	
	Percent	Count
Strongly disagree	5.26%	1
Disagree	15.79%	3
Neither disagree or agree	26.32%	5
Agree	52.63%	10
Strongly agree	0%	0
Totals	100%	19



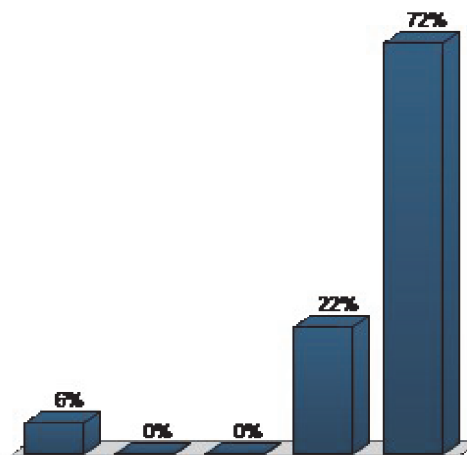
4. To what extent do you agree or disagree with the following statement: Montana’s fish, wildlife, and parkresources and the opportunitiesthey afford are something everyMontanan benefits from. (Multiple Choice)

	Responses	
	Percent	Count
Strongly disagree	5.26%	1
Disagree	10.53%	2
Neither disagree or agree	5.26%	1
Agree	10.53%	2
Strongly agree	68.42%	13
Totals	100%	19



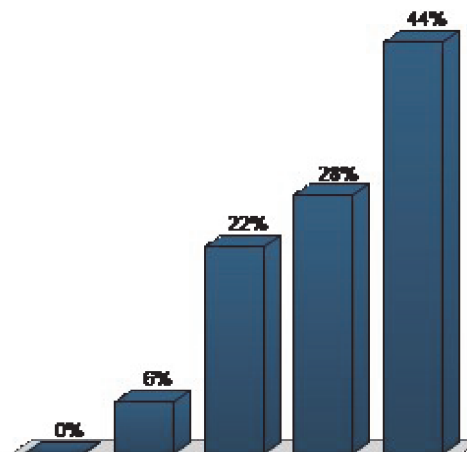
5. To what extent do you agree or disagree with the following statement: Conserving Montana’s fish, wildlife,and park resources for the futureis a responsibility that allMontanans should share. (Multiple Choice)

	Responses	
	Percent	Count
Strongly disagree	5.56%	1
Disagree	0%	0
Neither disagree or agree	0%	0
Agree	22.22%	4
Strongly agree	72.22%	13
Totals	100%	18



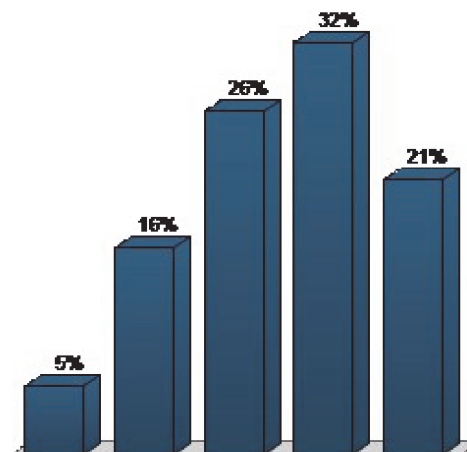
6. On a scale of 1 (none) to 5 (a lot), how much experience do you have:... interacting with FWP and its employees? (Multiple Choice)

Responses		
	Percent	Count
Poor	0%	0
	5.56%	1
	22.22%	4
	27.78%	5
Excellent	44.44%	8
Totals	100%	18



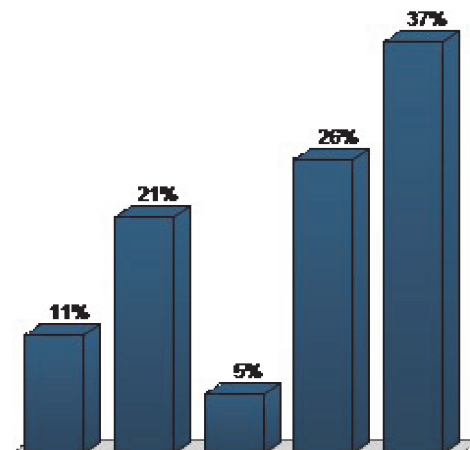
7. On a scale of 1 (none) to 5 (a lot), how much experience do you have:... seeking out information about what FWP is doing? (Multiple Choice)

Responses		
	Percent	Count
Poor	5.26%	1
	15.79%	3
	26.32%	5
	31.58%	6
Excellent	21.05%	4
Totals	100%	19



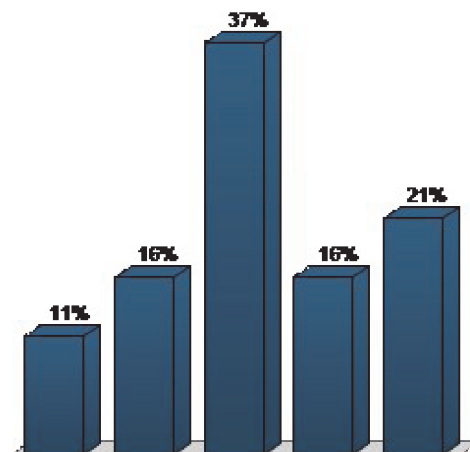
8. On a scale of 1 (none) to 5 (a lot), how much experience do you have:... providing input to FWP, the Fish and Wildlife Commission, and/or the Parks Board regarding fish, wildlife, and/or park related issues? (Multiple Choice)

Responses		
	Percent	Count
Poor	10.53%	2
	21.05%	4
	5.26%	1
Excellent	26.32%	5
	36.84%	7
	Totals	100%



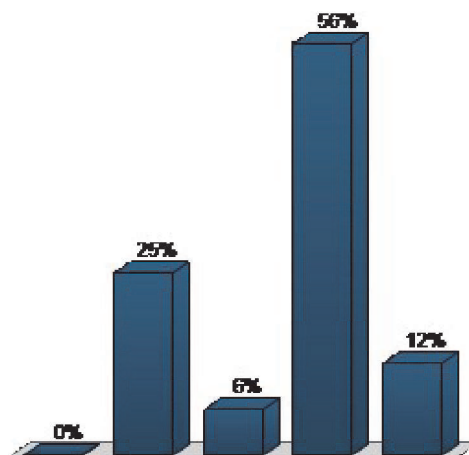
9. On a scale of 1 to 5, how would you rate FWP's reputation? (Multiple Choice)

Responses		
	Percent	Count
Poor	10.53%	2
	15.79%	3
	36.84%	7
Excellent	15.79%	3
	21.05%	4
	Totals	100%



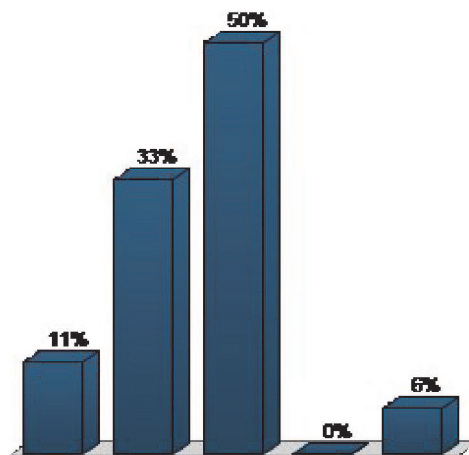
10. On a scale of 1 to 5, how would you rate FWP’s reputation among anglers? (Multiple Choice)

		Responses	
		Percent	Count
Poor		0%	0
		25%	4
		6.25%	1
		56.25%	9
Excellent		12.5%	2
	Totals	100%	16



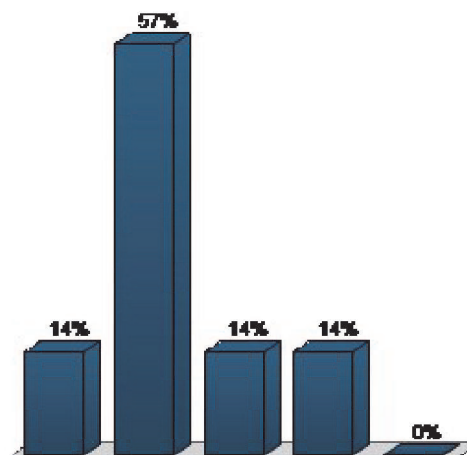
11. On a scale of 1 to 5, how would you rate FWP’s reputation among hunters? (Multiple Choice)

		Responses	
		Percent	Count
Poor		11.11%	2
		33.33%	6
		50%	9
		0%	0
Excellent		5.56%	1
	Totals	100%	18



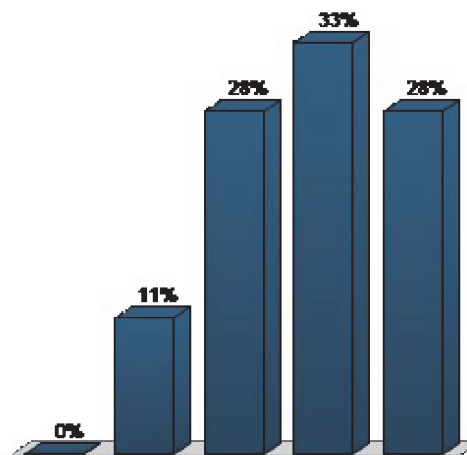
12. On a scale of 1 to 5, how would you rate FWP's reputation among trappers? (Multiple Choice)

Responses		
	Percent	Count
Poor	14.29%	1
	57.14%	4
	14.29%	1
	14.29%	1
Excellent	0%	0
	100%	7



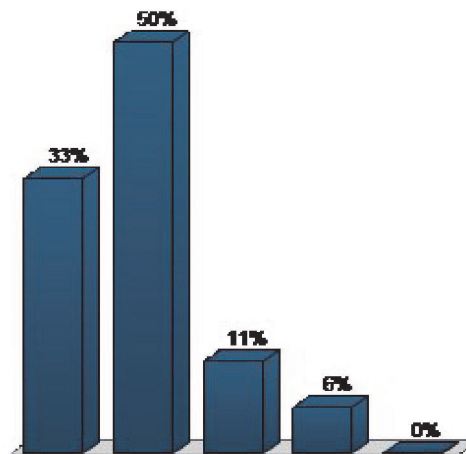
13. On a scale of 1 to 5, how would you rate FWP's reputation among state park users? (Multiple Choice)

Responses		
	Percent	Count
Poor	0%	0
	11.11%	2
	27.78%	5
	33.33%	6
Excellent	27.78%	5
	100%	18



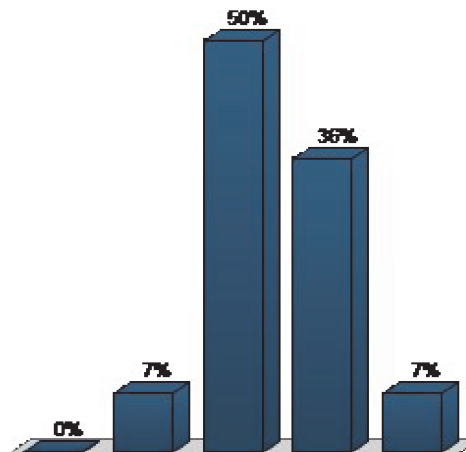
14. On a scale of 1 to 5, how would you rate FWP's reputation among rural private landowners? (Multiple Choice)

Responses		
	Percent	Count
Poor	33.33%	6
	50%	9
	11.11%	2
	5.56%	1
Excellent	0%	0
Totals	100%	18



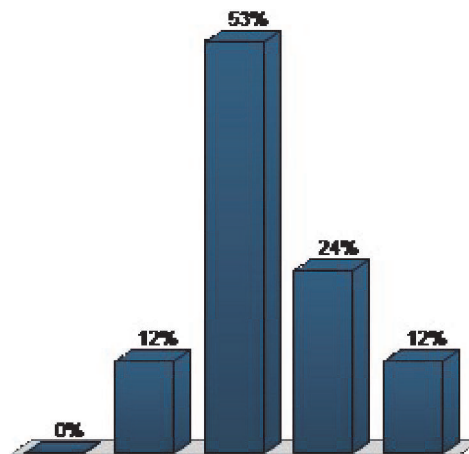
15. On a scale of 1 to 5, how would you rate FWP's reputation among people who don't hunt and/or fish but enjoy Montana's fish and wildlife resources nonetheless? (Multiple Choice)

Responses		
	Percent	Count
Poor	0%	0
	7.14%	1
	50%	7
	35.71%	5
Excellent	7.14%	1
Totals	100%	14



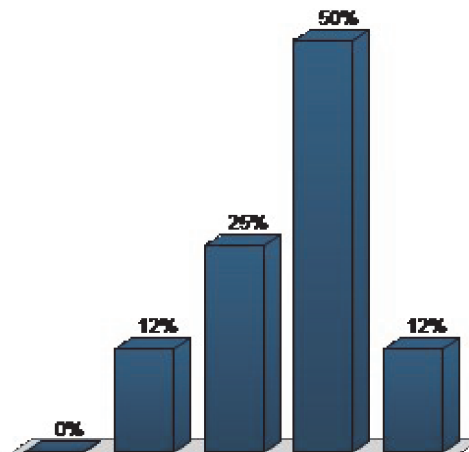
16. On a scale of 1 to 5, how would you rate FWP’s reputation among Montanans in general? (Multiple Choice)

Responses		
	Percent	Count
Poor	0%	0
	11.76%	2
	52.94%	9
	23.53%	4
Excellent	11.76%	2
	100%	17



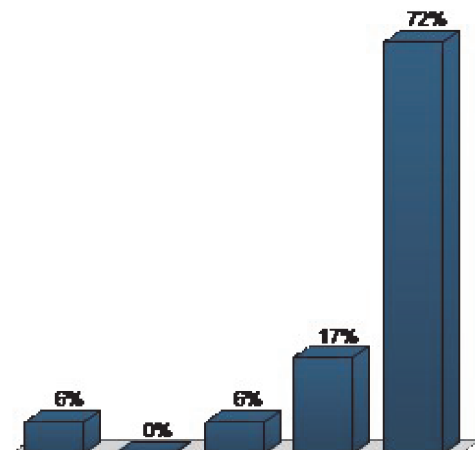
17. On a scale of 1 to 5, how would you rate FWP’s reputation among nonresidents that visit Montana to recreate? (Multiple Choice)

Responses		
	Percent	Count
Poor	0%	0
	12.5%	2
	25%	4
	50%	8
Excellent	12.5%	2
	100%	16



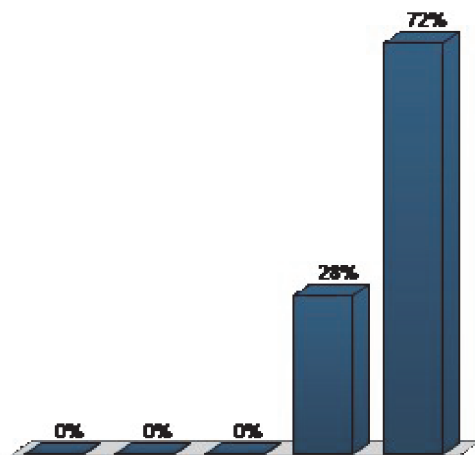
18. To what extent do you agree or disagree that the following should be a guiding principle for FWP: FWP will maintain the long-term viability of Montana’s natural,cultural and recreational resources. (Multiple Choice)

Responses		
	Percent	Count
Strongly disagree	5.56%	1
Disagree	0%	0
Neither disagree or agree	5.56%	1
Agree	16.67%	3
Strongly agree	72.22%	13
Totals	100%	18



19. Should the following should be a guiding principle for FWP: FWP will actively involve people in decisions that affect them; help people to participate by providing them with credible and objective information; and, develop programs with a clear understanding of public expectations for FWP service. (Multiple Choice)

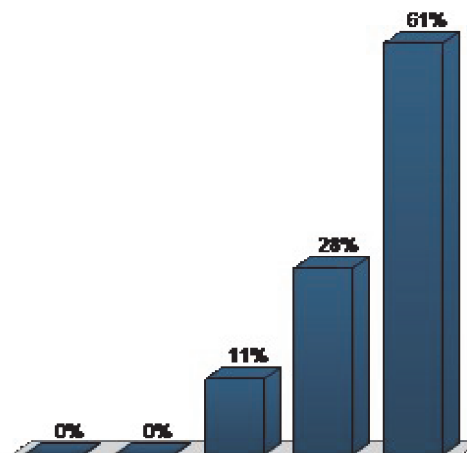
Responses		
	Percent	Count
Strongly disagree	0%	0
Disagree	0%	0
Neither disagree or agree	0%	0
Agree	27.78%	5
Strongly agree	72.22%	13
Totals	100%	18



20. Should the following should be a guiding principle for FWP: FWP will serve as an advocate for responsible management and equitable allocation of public use of the limited resources they are entrusted to manage.

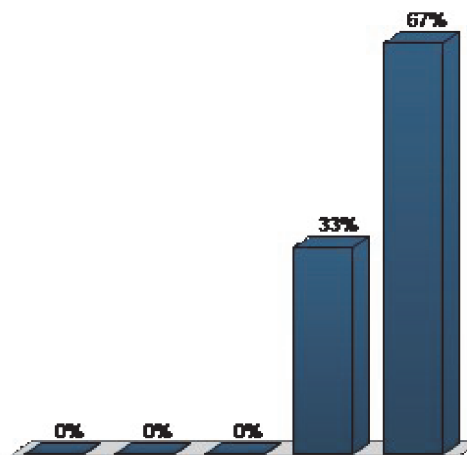
(Multiple Choice)

Responses		
	Percent	Count
Strongly disagree	0%	0
Disagree	0%	0
Neither disagree or agree	11.11%	2
Agree	27.78%	5
Strongly agree	61.11%	11
Totals	100%	18



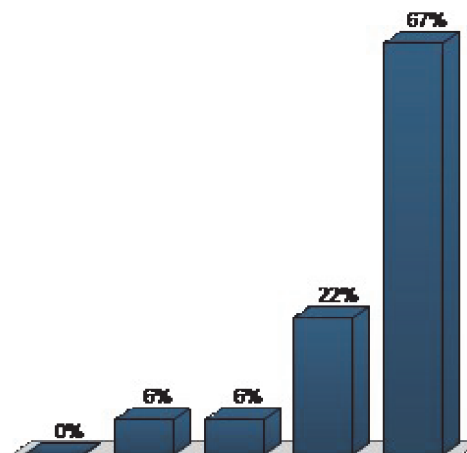
21. Should the following should be a guiding principle for FWP: FWP will manage fish, wildlife, and recreation resources with pride in Montana's hunting, angling, and outdoor heritage. (Multiple Choice)

Responses		
	Percent	Count
Strongly disagree	0%	0
Disagree	0%	0
Neither disagree or agree	0%	0
Agree	33.33%	6
Strongly agree	66.67%	12
Totals	100%	18



22. Should the following should be a guiding principle for FWP: FWP will create and strengthen working partnerships with individuals, organized groups and other natural, historic, and cultural resource management agencies. (Multiple Choice)

Responses		
	Percent	Count
Strongly disagree	0%	0
Disagree	5.56%	1
Neither disagree or agree	5.56%	1
Agree	22.22%	4
Strongly agree	66.67%	12
Totals	100%	18



23. Should the following should be a guiding principle for FWP: FWP will use innovation and technology to improve their services. (Multiple Choice)

Responses		
	Percent	Count
Strongly disagree	0%	0
Disagree	0%	0
Neither disagree or agree	5.88%	1
Agree	23.53%	4
Strongly agree	70.59%	12
Totals	100%	17

