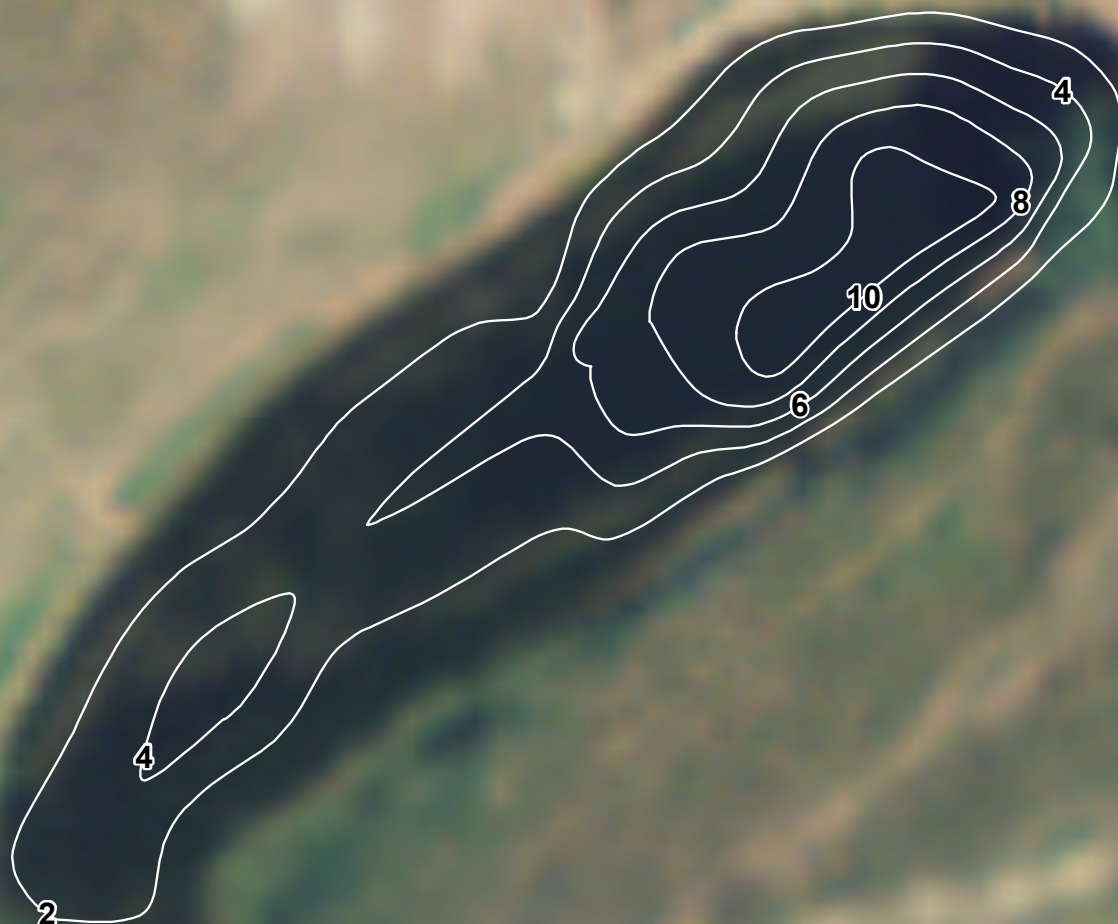


Dawson 1 Reservoir

Surface Area: 0.9 acres
Maximum depth: 11.1 feet
Mean Depth: 5.8 feet
Volume: 2.7 acre-feet
LLID: 1109747473973



0 25 50 100
Feet

Data Services Section - ISR 31298
31298_dawson1.mxd
January 21, 2016



Lake volume and 2 foot contours calculated
in ArcMap using 3-D Analyst using GPS
survey points from field measurements collected
2015 by Casey Jensen, Region 4, Lewistown.
Dawson 1 Reservoir is in Cascade County, Montana.