

Lewistown Area Resource Office
2016-2017 Pond Fishing Guide



Take a Kid Fishing!



***Montana Fish,
Wildlife & Parks***

INFORMATION ABOUT LARO PONDS PROGRAM

Several ponds and reservoirs managed by the Lewistown Area Resource Office are located on private lands. These fisheries have been developed by cooperation between private landowners and MTFWP to diversify fishing opportunities throughout the region. Landowners have agreed to provide access; however, have not forfeited private property rights. Landowners have the right to deny access at any time; note those reservoirs where '**Landowner permission required.**'

Please remember: **Landowner permission is required to access any private land.**

In addition to private ponds, the Lewistown staff maintains several public land fisheries located on Federal, State, and Municipal properties. Many of these public land fisheries are accessible through private land easements. When accessing any pond or reservoir remember to stay on trail and leave gates as you found them. Additionally, remember to pack out all garbage while enjoying these fisheries. Littering is illegal, a chronic problem, and may result in closed access to these areas.

The Lewistown staff begin sampling in late spring and continue through early fall. The larger, more popular, ponds and reservoirs are sampled annually; however, those that receive less angling pressure are usually sampled every 2-3 years. The most up to date sampling details are available in the MTFWP Annual Fishing Newsletter.

Most of these opportunities are maintained by MTFWP stocking efforts. Whether a waterbody is stocked with warmwater versus coldwater species is dependent on various factors including: water chemistry, temperature, locality, and angler demand. Many warmwater species (yellow perch, bluegill, and black crappie) have established self-sustaining populations, but fluctuating water levels can result in winterkills requiring restocking.

WINDMILL PROGRAM

Winter and summer fish kills are common for many Fergus and Petroleum County reservoirs. Marginal depths (<12 feet) can result from a variety of factors including: below average annual precipitation, evaporation, irrigation demands, and compromised dam integrity.

A winter-kill event typically occurs when excessive snow cover persists on the ice for an extended duration. When sunlight cannot penetrate through snow-covered ice, aquatic vegetation begins to die. The decay of aquatic vegetation removes oxygen from the water, and a partial or entire die-off of fish occurs in the waterbody.

A summer-kill can occur during consecutive days of extremely high air temperatures. High air temperatures increase the water temperature of a waterbody. As a result, oxygen is depleted and a fish kill occurs.

In conjunction with the Bureau of Land Management, Lewistown FWP staff has installed and maintains windmill aerators on waterbodies that have experienced chronic fish kills. Currently, windmill aerators are installed at Hollands, Payola, and South Fork Dry Blood reservoirs. Air is pumped to an aerating stone placed in the deepest part of the waterbody via tubing connected to the windmill. As the air passes through the stone, bubbles are generated which rise to the surface, circulating the water to increase oxygen levels and lower water temperatures in the summer months.

Anglers fishing at aerator equipped waterbodies are encouraged to contact FWP if you suspect a windmill may be broken or not functioning properly. Also, please report any vandalism to the TIP-MONT hotline at 1-800-847-6668.

ATTENTION ANGLERS: Please use extra caution when ice fishing on a pond with a windmill aerator as there may be thin ice in some areas.

Illegal Introductions and the Effects of Bucket Biology

Illegal fish introductions or “**Bucket Biology**” is a continual problem throughout Montana. Fish, Wildlife, and Parks fisheries staff strives to create and manage fisheries throughout the Lewistown area with a diversity of species to support angler demand. The result is declined catch rates and growth rates of target species, and time-consuming and costly removal efforts. One of the leading causes of illegal introductions is the dumping of bait buckets into the pond or reservoir after anglers are done fishing for the day. Be advised, transporting live game fish is illegal and carries a fine up to \$5000 and the loss of hunting and fishing privileges.

Recent illegal introductions in the Lewistown-Area include:

Upper and Lower Carter Ponds – Bluegill and Yellow Perch

Box Elder (Vogel) Reservoir – Yellow Perch

Petrolia Reservoir – Bluegill

Yellow Water Reservoir – Yellow Perch

As a result of illegal introductions, established fisheries have experienced negative trends in both fish growth and catch rate. Annual stocking of rainbow trout in Upper/Lower Carter Ponds, Box Elder (Vogel) Reservoir, and Yellow Water Reservoir was discontinued in 2015. Both Upper and Lower Carter Ponds were treated with piscicide in November 2015 to remove all fish from these systems. These piscicide treatments require significant personnel hours and monetary investment. Stocking of Upper and Lower Carter will continue in 2016, but annual monitoring of both reservoirs will take place. Future illegal introductions may result in the termination of MTFWP fisheries management at identified ponds and reservoirs.



RULES AND REGULATIONS

Anglers are responsible for knowing the fishing regulations before recreating at a waterbody. Depending on location, ponds and reservoirs managed by Lewistown staff and included in this book could be located in the Central or Eastern Fishing District. Anglers should familiarize themselves with specific regulations pertaining to waterbodies located in these individual districts. Here is a list of other guidelines that anglers should follow when fishing Lewistown-area ponds and reservoirs.

- **Landowner Permission is required when accessing any privately owned land**
- **Absolutely no overnight camping at any private pond without the landowners consent**
- **Stay on established roads and use common sense on wet roads**
- **No Fires**

FERGUS COUNTY PONDS

Pond #	Pond Name	Pond Location	Lat/Long	Ownership	BLM Map	Game Fish Species	Comments
1	Anderson Coulee Reservoir	T21N, R17E, S36	47.5454 -109.4832	State (DNRC)	Winifred	Largemouth Bass	3.5-acre reservoir. 1000 largemouth bass are stocked annually. No fish sampled in 2014. Landowner permission required.
Directions: Continue 4.0 miles west of Winifred on Bear Springs Rd. Turn left onto Smith Lane; after 1.0 mile veer right onto unnamed trail. Reservoir is walk-in accessible and ~0.5 miles from Smith Lane.							
2	Barta Reservoir	T16N, R16E, S34	47.1079 -109.6889	Private	Lewistown	Rainbow Trout	2.5-acre reservoir. 500 4" rainbow trout are stocked biennially. Landowner permission required.
Directions: Travel Hwy 191 2.5 miles north of Lewistown. Turn left onto Hwy 426 and continue for 11.8 miles. Turn left onto unnamed trail. Pond is located 1.5 miles south of Hwy 426 on unnamed trail.							
3	Big Casino Reservoir	T15N, R18E, S27	47.0367 -109.4303	Private	Lewistown	Yellow Perch and Largemouth Bass	17-acre reservoir. 5000 Largemouth bass are stocked annually post-2014
Directions: From Lewistown take Castle Butte Rd. 1.4 miles and turn right onto Reservoir Dr. Continue 0.5 miles to Big Casino Reservoir.							
4	Boy Scout Pond	T17N, R18E, S6	47.2682 -109.4669	Private	Lewistown	Rainbow Trout	2.5-acre reservoir. 500 3" rainbow trout are stocked annually. Landowner permission required.
Directions: From Hilger take North Kendall Rd. 5.0 miles and turn left onto Boy Scout Rd. Continue 0.8 miles to entrance of Boy Scout Camp. Pond is walk-in accessible and ~0.5 miles from camp entrance.							
5	Carpenter Reservoir	T19N, R14E, S29	47.3771 -109.9736	Private	Lewistown	Rainbow Trout and Brook Trout	5.5-acre reservoir. 500 4" rainbow trout and 250 4" brook trout are stocked annually. Brook trout stocking was initiated in 2015. Landowner permission required.
Directions: From Denton (Hwy 81) take North Denton Rd. 4.0 miles north and turn left onto Carpenter Rd. Travel 0.5 miles and turn right onto unnamed trail. Reservoir is visible from Carpenter Road.							

FERGUS COUNTY PONDS (continued)

Pond #	Pond Name	Pond Location	Lat/Long	Ownership	BLM Map	Game Fish Species	Comments
6	Carter (Lower) Pond	T16N, R18E, S22	47.1423 -109.4292	Private	Lewistown	Rainbow Trout	23-acre reservoir. 500 7-9" and 1000 4" rainbow trout are stocked annually. Management action to address illegal introduction completed in Nov. 2015. Reservoir is fishless until Spring 2016.
Directions: Travel Hwy 191 5.9 miles north of Lewistown. Turn right onto unnamed trail at FWP "Lower Carter" signage.							
7	Carter (Upper) Pond	T16N, R18E, S15	47.1515 -109.4269	Private	Lewistown	Rainbow Trout	16-acre reservoir. 3000 4" rainbow trout are stocked annually. Management action to address illegal introduction completed in Nov. 2015. Reservoir is fishless until Spring 2016.
Directions: Travel Hwy 191 6.6 miles north of Lewistown. Turn right onto unnamed trail at FWP "Upper Carter" signage.							
8	Crystal Lake	T12N, R17E, S13	46.8044 -109.5131	Federal (USFS)	Big Snowy Mountains	Rainbow Trout	42-acre reservoir. 2000 10-12" rainbow trout are stocked annually.
Directions: From Moore travel east on Hwy 87 5.7 miles. Turn right onto Crystal Lake Rd. and continue for 21 miles to campground.							
9	East Fork Reservoir	T14N, R19E, S14	46.9829 -109.2793	Municipal (City of Lewistown)	Big Snowy Mountains	Yellow Perch, Northern Pike, Largemouth Bass, Brook Trout, Brown Trout	94-acre reservoir. Recent fisheries survey found northern pike averaging 23.5" and yellow perch 8.5", and low densities of brook trout and brown trout. Largemouth bass were reported by anglers in 2015; however, have never been detected in sampling gear.

Directions: Travel Hwy 238 11.0 miles south of Lewistown. Veer right onto unnamed road. Boat ramp is ~1 mile on unnamed road.

FERGUS COUNTY PONDS (continued)

Pond #	Pond Name	Pond Location	Lat/Long	Ownership	BLM Map	Game Fish Species	Comments
10	Elks County Club Pond	T15N, R18E, S23	47.0552 -109.4015	Private	Lewistown	Rainbow Trout	<1-acre kid's fishing pond. 200 7-9" rainbow trout are stocked annually. Anglers must be 14 years of age or younger. Landowner permission required.
Directions: From Lewistown travel 1st Ave. (Hwy 238) south 1.0 mile. Turn left onto Country Club Lane and proceed 0.5 miles. Pond is walk-in accessible.							
11	Frog Ponds	T15N, R18E, S15	47.0573 -109.4306	Municipal (City of Lewistown)	Lewistown	Rainbow Trout	1-acre upper pond and 0.75-acre lower pond. 750 7-9" rainbow trout are stocked in lower pond and 1000 7-9" rainbow trout are stocked in upper pond annually.
Directions: Both ponds are located within Lewistown city limits and can be accessed from Lower Airport Road and Spring Street.							
12	Hansen Reservoir	T14N, R19E, S5	46.9989 -109.3361	Municipal (City of Lewistown)	Big Snowy Mountains	Rainbow Trout	13-acre reservoir. 6000 4" rainbow trout are stocked annually.
Directions: Travel Hwy 238 5.6 miles south of Lewistown and veer right onto Hatchery Rd. (Hwy 466). Continue 1.9 miles and Hatchery Rd. becomes Hansen Creek Rd. Hansen Reservoir is located on the right; 0.7 miles from Hansen Creek/Castle Creek Rd. intersection.							
13	Hassler (Lower) Reservoir	T17N, R18E, S11	47.2549 -109.3976	Private	Lewistown	Largemouth Bass	3-acre reservoir. 500 largemouth bass will be stocked in 2014. Landowner permission required.
Directions: From Hilger take North Kendall Rd. 1.8 miles. Reservoir is visible left of the road.							
14	Hassler (Upper) Reservoir	T17N, R18E, S11	47.2594 -109.3963	Private	Lewistown	Rainbow Trout	5-acre reservoir. 200 7-9" rainbow trout are stocked annually. Landowner permission required.
Directions: From Hilger take North Kendall Rd. 2.0 miles. Reservoir is northeast of gate ~1/4 mile and walk-in accessible.							
15	Holgate Reservoir	T18N, R14E, S30	47.2939 -109.9874	Private	Lewistown	Rainbow Trout, Brown Trout and Brook Trout	1.4-acre reservoir. 500 4" rainbow trout are stocked annually. Landowner permission required.
Directions: From Denton travel south on Benchland Rd. 1.8 miles. Turn left into homestead and unnamed trail, and continue 1.5 miles.							

FERGUS COUNTY PONDS (continued)

Pond #	Pond Name	Pond Location	Lat/Long	Ownership	BLM Map	Game Fish Species	Comments
16	Holland Reservoir	T20N, R26E, S22	47.4889 -108.3920	Federal (BLM)	Winnett	Largemouth Bass	13-acre reservoir. Windmill aeration system present.
<p>Directions: Travel Hwy 191 35 miles north of Grass Range. Turn right onto Ridge Rd. and continue for 11.6 miles. At Ridge Rd./Wilder Trail intersection, continue east on Musselshell Trail for 7.4 miles. Turn right onto unnamed trail and continue ~3.0 miles to reservoir.</p>							
17	Jakes Reservoir	T20N, R24E, S11	47.5074 -108.6228	Federal (BLM)	Zortman	Yellow Perch and Sauger	19-acre reservoir.
<p>Directions: Travel Hwy 191 35 miles north of Grass Range. Turn right onto Ridge Rd. and continue for 7.1 miles. Turn right onto unnamed trail at BLM "Jakes Reservoir" signage. Reservoir is 0.3 miles south of Ridge Rd.</p>							
18	Kingsbury Pond	T19N, R14E, S03	47.4348 -109.9224	State (DNRC)	Lewistown	Rainbow Trout and Brown Trout	3.6-acre reservoir. Stocking was reinstated in 2015; stock success has not been confirmed
<p>Directions: Travel Hwy 81 1.9 miles north of Coffee Creek. Veer right, continuing straight on North Coffee Creek Rd. for 9.1 miles. Veer right, continuing straight on Kingsbury Rd. for 3.0 miles. The reservoir can be accessed via walk-in 450 yards south of Kingsbury Rd. on the DNRC property.</p>							
19	Kinkelaar Pond	T22N, R20E, S15	47.6733 -109.1407	Private	Winifred	Rainbow Trout	1.65-acre reservoir. Stocking began in 2011; stock success has not been confirmed. Landowner permission required.
<p>Directions: From Winifred travel DY Trail 17.0 miles. Turn right onto unnamed trail and continue 1.4 miles to the reservoir.</p>							
20	Olsen Reservoir	T22N, R19E, S30	47.6502 -109.3379	Private	Winifred	Rainbow Trout	3.75-acre reservoir. 500 4" rainbow trout are stocked annually.
<p>Directions: From Winifred travel DY Trail 1.9 miles and continue straight onto Stafford Ferry Rd. Travel 5.7 miles north on Stafford Ferry Rd. and the reservoir is visible on the right.</p>							

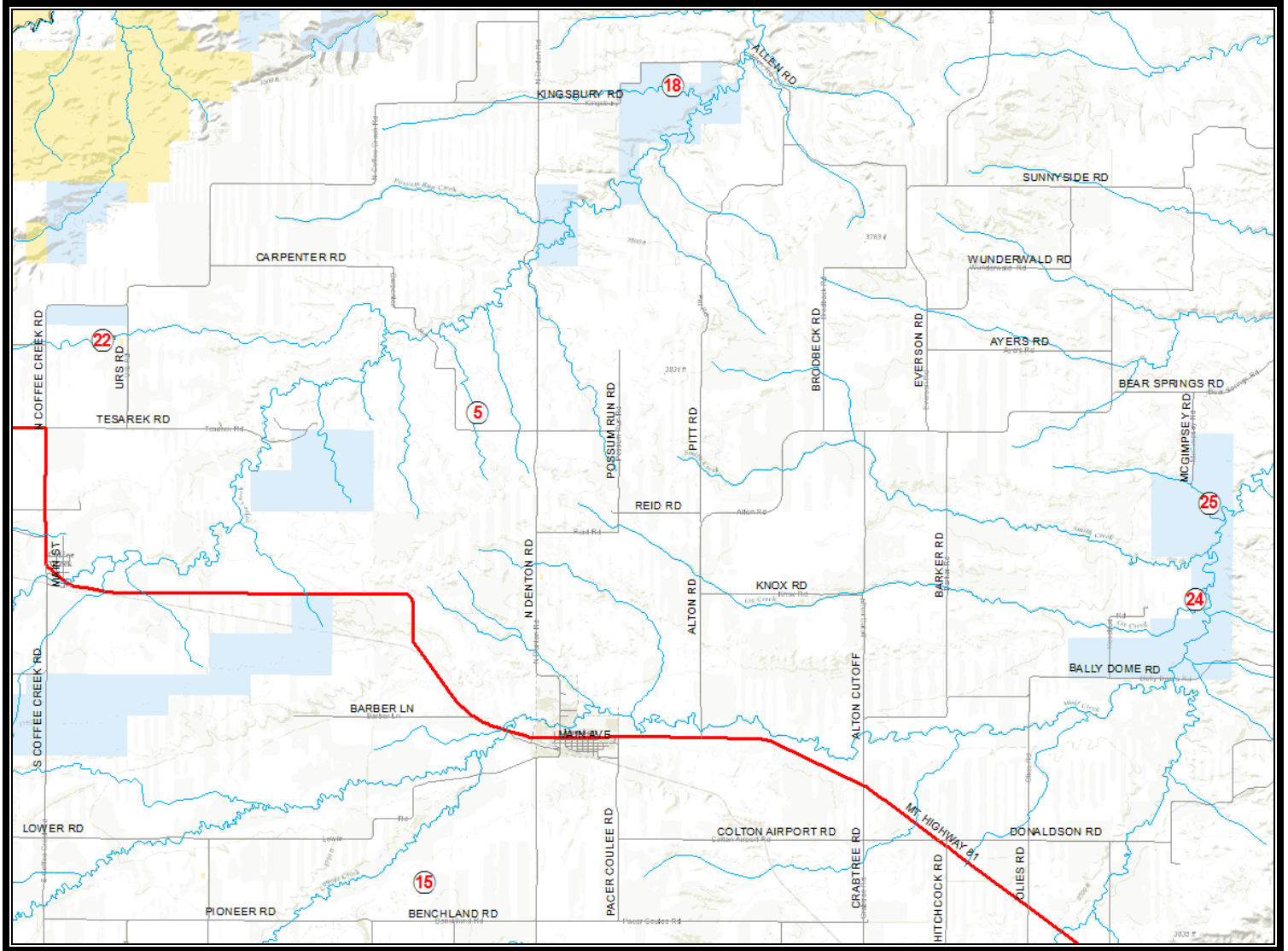
FERGUS COUNTY PONDS (continued)

Pond #	Pond Name	Pond Location	Lat/Long	Ownership	BLM Map	Game Fish Species	Comments
21	Slivka Reservoir #2	T21N, R18E, S20	47.5791 -109.4429	Private	Winifred	Largemouth Bass	4-acre reservoir. 1000 largemouth bass are stocked annually. Fish kill reported in Spring 2013 Landowner permission required.
<p>Directions: From Winifred travel PN Bridge Rd. 4.4 miles. Turn left onto unnamed trail immediately past missile silo. Reservoir is ~0.3 miles south of PN Bridge Rd. on unnamed trail.</p>							
22	Urs Reservoir	T19N, R13E, S21	47.3897 -110.0683	Private	Belt	Rainbow Trout	5-acre reservoir. 1000 4" rainbow trout stocked annually. Landowner permission required.
<p>Directions: From Coffee Creek continue north on Hwy 81 for 1.7 miles. Turn right onto Tesarek Rd for 1.0 mile; turn left onto Urs Rd. Continue on Urs Rd. 1.0 mile and turn left onto unnamed trail immediately before missile silo. Reservoir is 0.3 miles west of Urs Rd.</p>							
23	Whisker Reservoir	T20N, R26E, S17	47.4962 -108.4214	Federal (BLM)	Winnett	Largemouth Bass and Black Crappie	28-acre reservoir.
<p>Directions: Travel Hwy 191 35 miles north of Grass Range. Turn right onto Ridge Rd. and continue for 11.6 miles. At Ridge Rd./Wilder Trail intersection, continue east on Musselshell Trail for 6.4 miles. Turn right onto unnamed trail and continue ~0.5 miles to reservoir.</p>							
24	Wolf Creek Ranch Pond (Lower)	T18N, R15E, S11	47.3444 -109.7867	State (DNRC)	Lewistown	Largemouth Bass	2.25-acre reservoir. 500 largemouth bass were stocked in 2014. No gamefish sampled in 2014.
<p>Directions: From Denton travel east on Hwy 81 3.6 miles. Turn left onto Afton Cutoff and continue north 0.8 miles. Turn right onto Bally Dome Rd. and continue 3.9 miles. Turn left and continue north on unnamed trail 1.2 miles. Reservoir is on left.</p>							
25	Wolf Creek Ranch Pond (Upper)	T19N, R15E, S35	47.3611 -109.7825	State (DNRC)	Lewistown	Rainbow Trout, Brown Trout and Brook Trout	4.5-acre reservoir. 1000 4" rainbow trout stocked annually.
<p>Directions: From Denton travel east on Hwy 81 3.6 miles. Turn left onto Afton Cutoff and continue north 0.8 miles. Turn right onto Bally Dome Rd. and continue 3.9 miles. Turn left and continue north on unnamed trail 1.2 miles. Park at locked gate; reservoir is walk-in accessible ~1.5 miles north of locked gate.</p>							

Fergus County Fishing Ponds

Denton-Area Ponds and Reservoirs

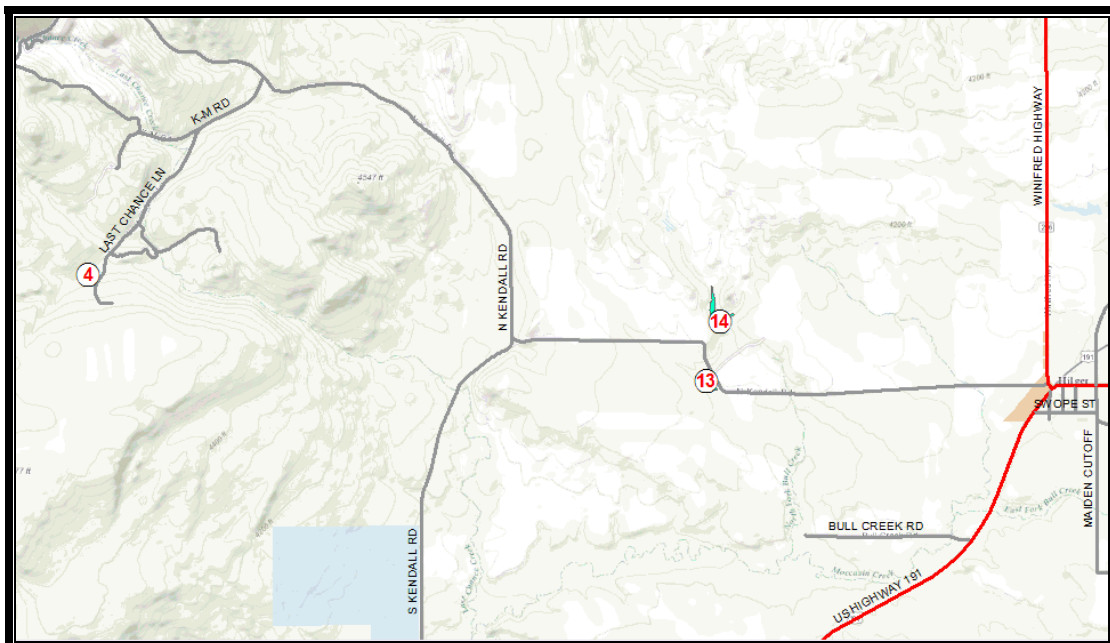
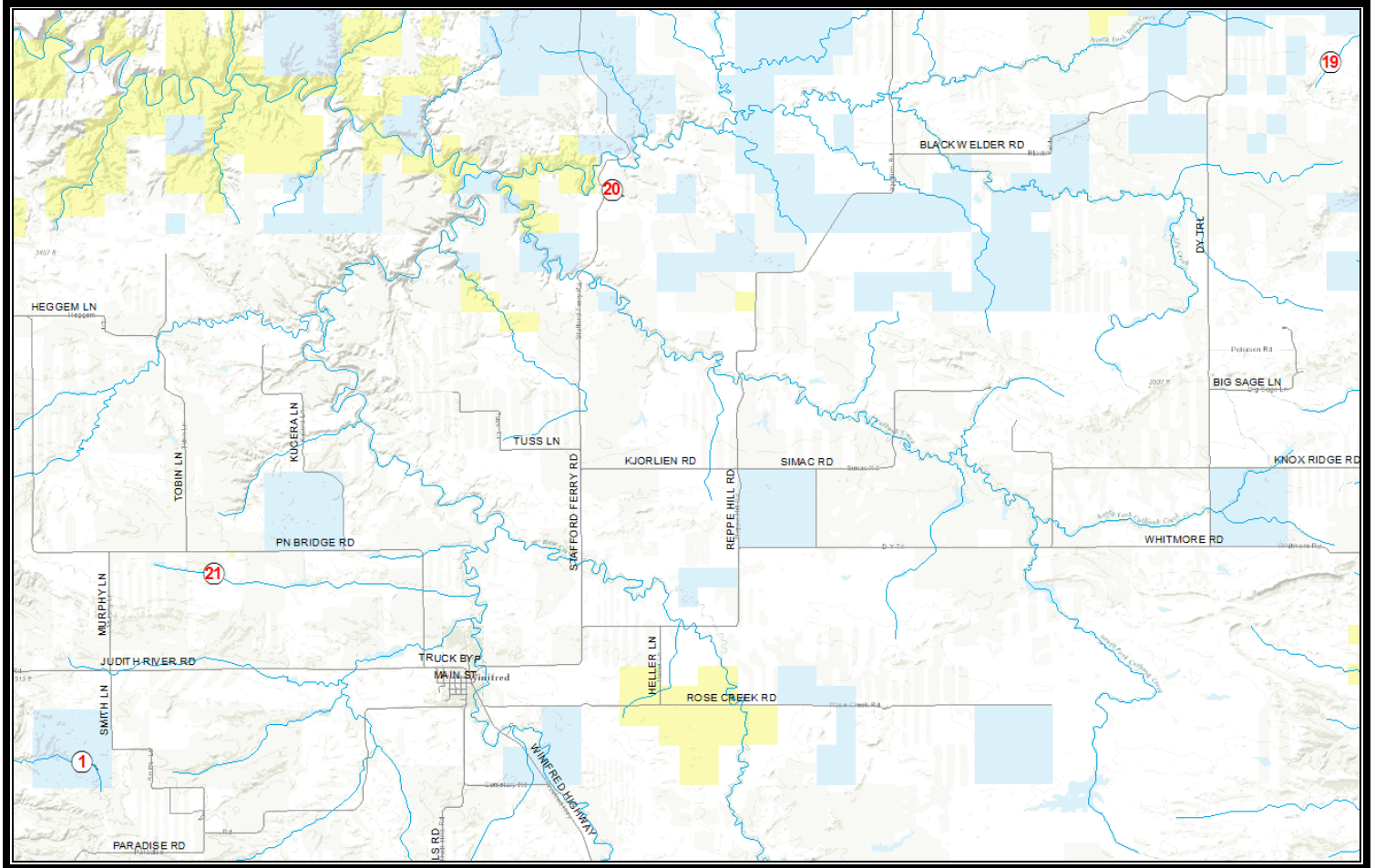
Holgate, Urs, Kingsbury, Carpenter, Wolf Ranch Upper and Lower



Fergus County Fishing Ponds

Winifred-Area and Hilger-Area Ponds and Reservoirs

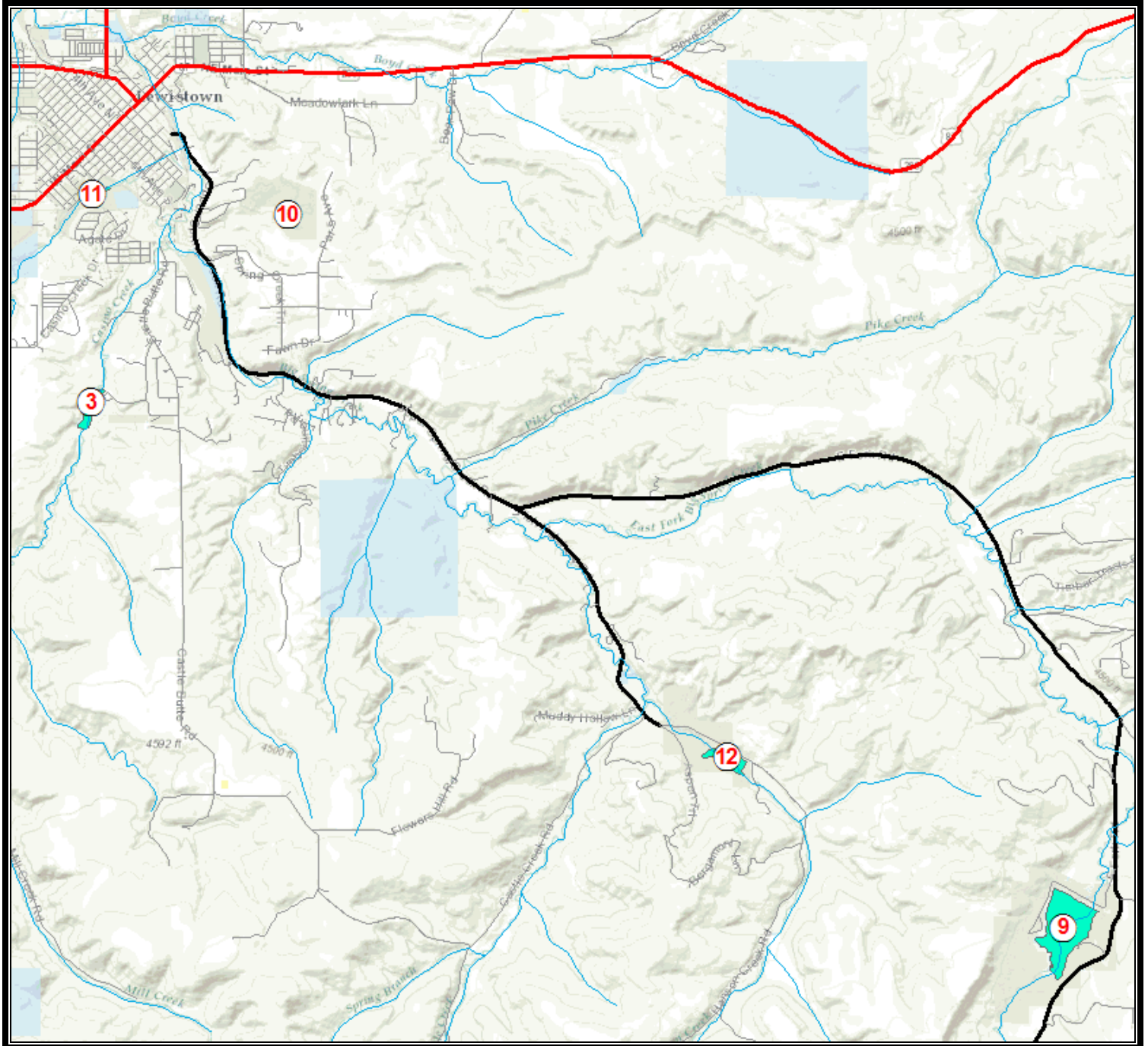
Anderson Coulee, Kinkelaar, Olsen, and Slivka #2



Fergus County Fishing Ponds

Lewistown-Area Ponds and Reservoirs

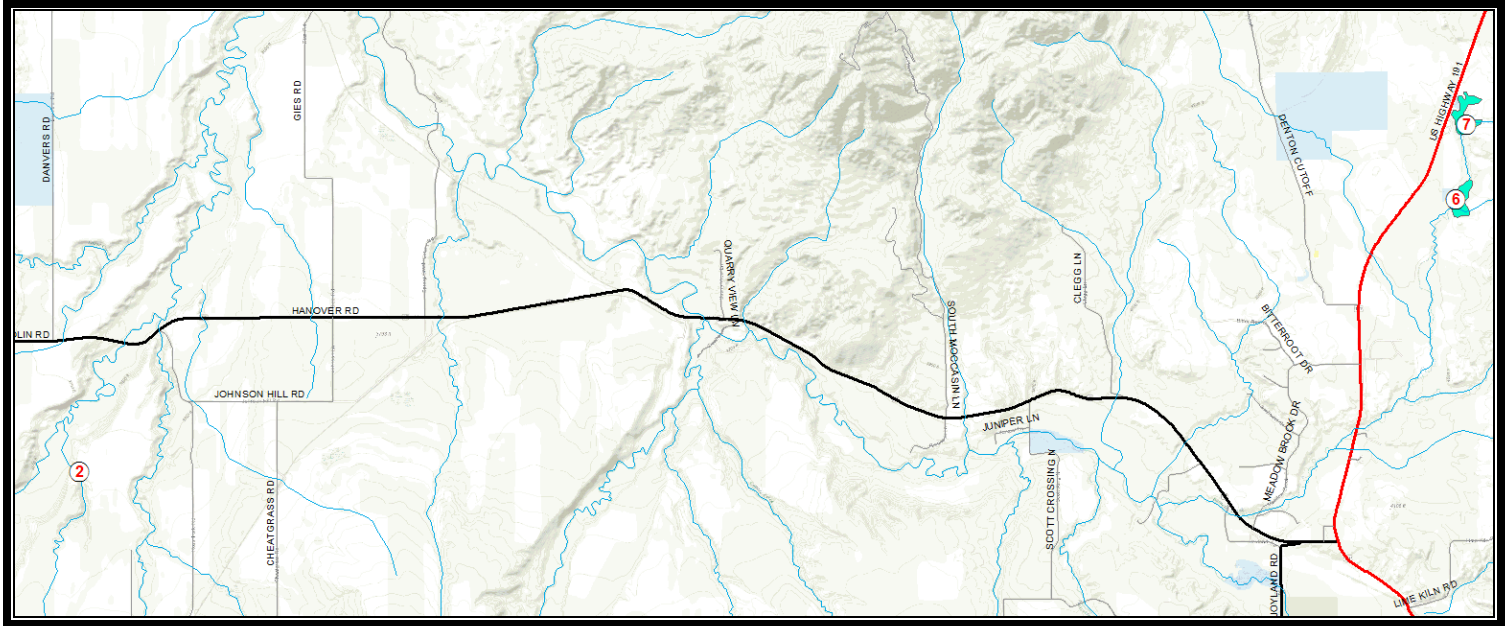
East Fork, Big Casino, Elks Country Club, Upper and Lower Frog, and Hansen



Fergus County Fishing Ponds

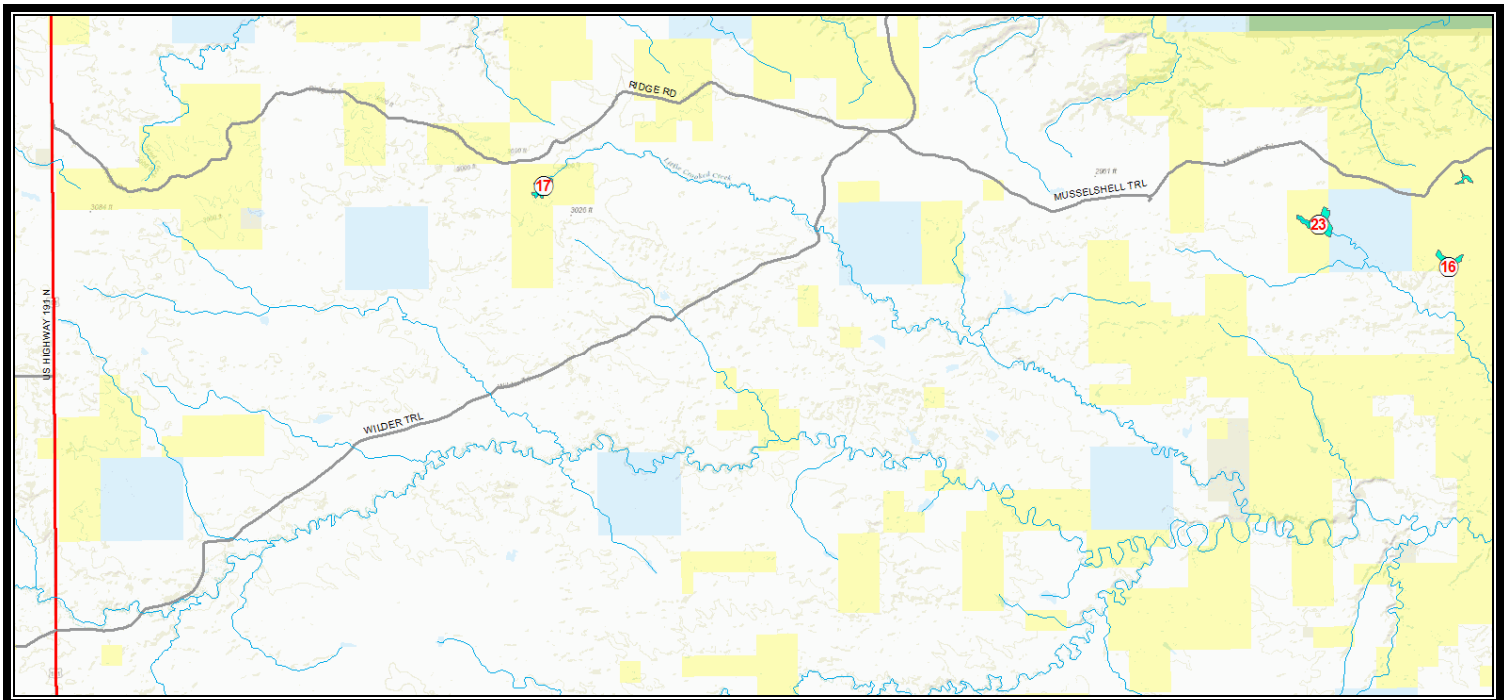
North Lewistown and Hanover Ponds and Reservoirs

Upper and Lower Carter Ponds and Barta Reservoir



Missouri Breaks-Area Ponds and Reservoirs

Jakes, Whisker, and Hollands



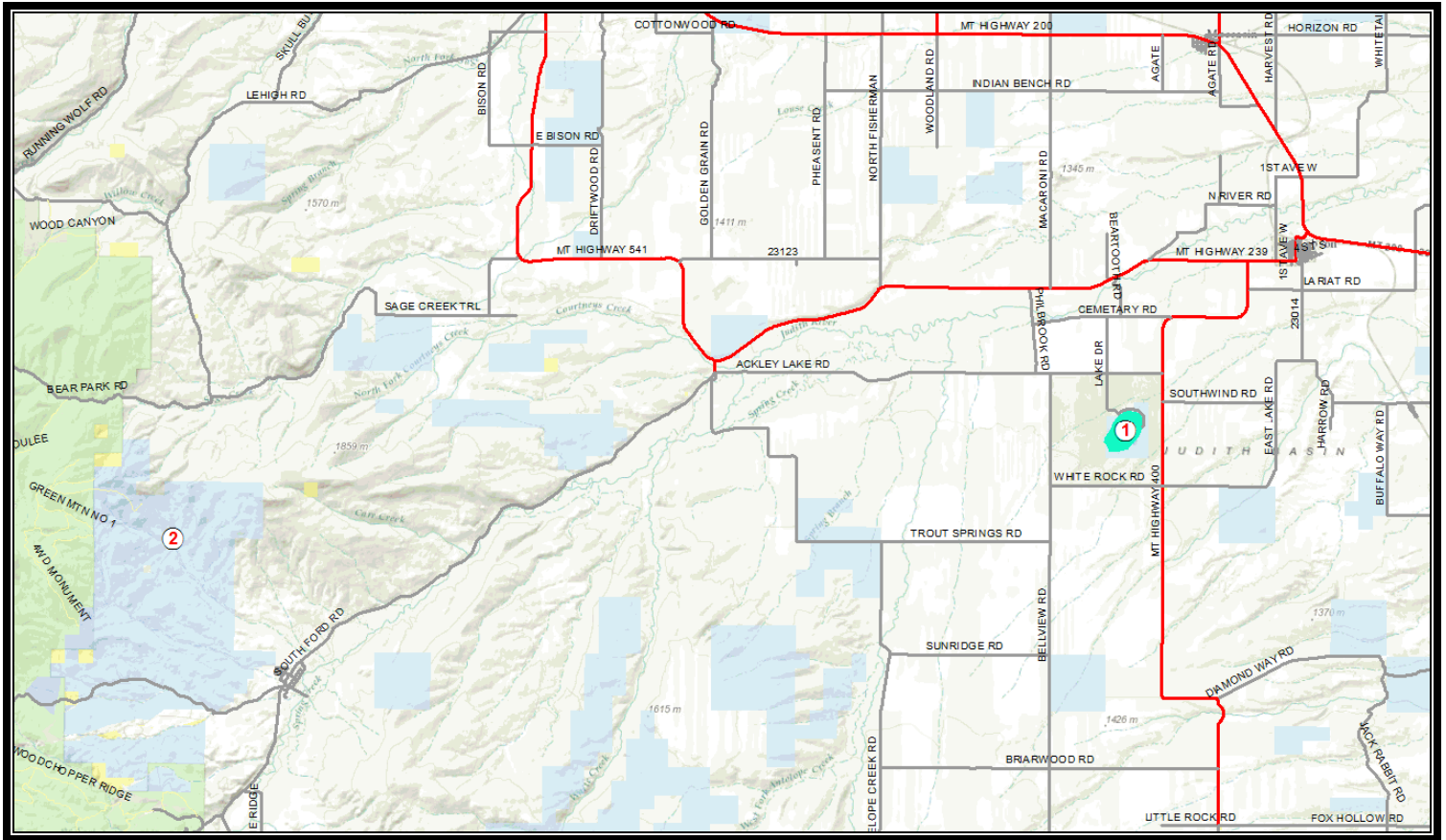
JUDITH BASIN COUNTY PONDS

Pond #	Pond Name	Pond Location	Lat/Long	Ownership	BLM Map	Game Fish Species	Comments
1	Ackley Lake	T14N, R14E, S22	46.9586 -109.9333	State (FWP)	Big Snowy Mountains	Rainbow Trout Brown Trout and Tiger Muskie	196-acre reservoir. 45,000 3-4" rainbow trout are stocked annually. 3000 fry and 1000 4" tiger muskie were stocked in 2015
<p>Directions: From Hobson take Utica Rd. (Hwy 239) 0.9 miles and turn left onto Hwy 400. Continue 3.4 miles and turn right onto Ackley Lake Rd. Follow signage 2.1 miles to reservoir.</p>							
2	Dipping Vat Pond	T13N, R11E, S02	46.9237 -110.2943	State (FWP)	White Sulphur Springs	Rainbow Trout	0.81-acre reservoir. 200 4" rainbow trout are stocked biennially.
<p>Directions: From Sapphire Village take Yogo Rd. 1.7 miles and turn right onto unnamed two-track at Judith River Wildlife Management Area buildings. Continue on unnamed road 2.5 miles merging left when encountering other two-tracks until reservoir is reached.</p>							
3	Rhoda Lake	T14N, R9E, S16	46.9689 -110.5963	Federal (USFS)	White Sulphur Springs	Westslope Cutthroat Trout	3-acre mountain lake. 2000 1-2" westslope cutthroat trout are stocked biennially. Access DIFFICULT

Directions: Access is available via Dry Wolf Creek USFS trail or Big Baldy USFS trail. Consult USFS map for further direction.

Judith Basin County Fishing Ponds

Ackley Lake and Dipping Vat Pond

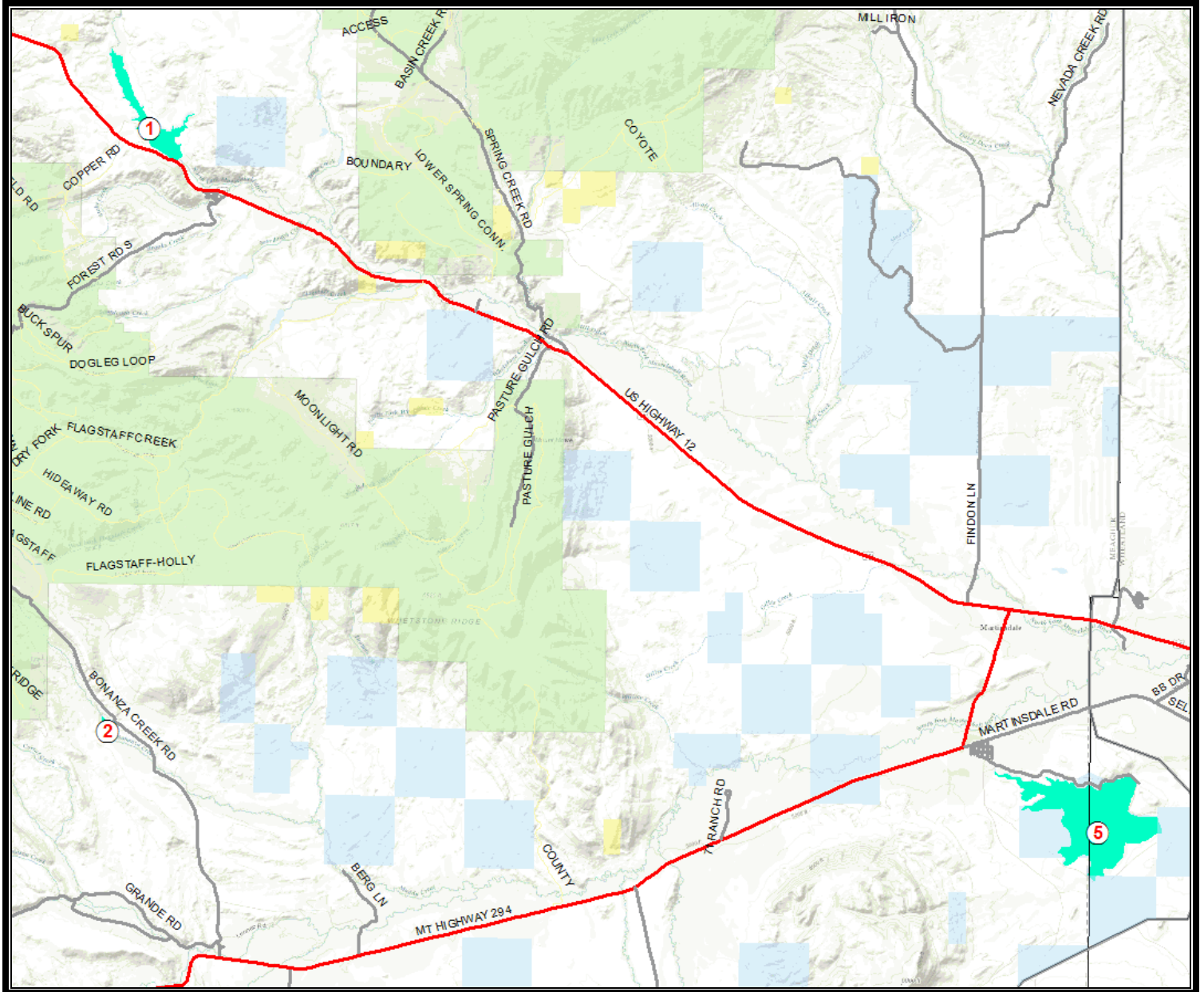


MEAGHER COUNTY PONDS

Pond #	Pond Name	Pond Location	Lat/Long	Ownership	BLM Map	Game Fish Species	Comments
1	Bair Reservoir	T10N, R9E, S35	46.5789 -110.5587	Private	White Sulphur Springs	Rainbow Trout	245-acre reservoir. 15,000 3" rainbow trout are stocked annually.
Directions: From Checkerboard continue 1.0 miles west on Hwy 12. Reservoir is located north of highway.							
2	Bonanza Reservoir	T8N, R9E, S15	46.5789 -110.5772	Private	Ringling	Rainbow Trout and Brook Trout	19-acre reservoir. 500 4" rainbow trout are stocked annually. Landowner permission required.
Directions: Travel Hwy 294 11.7 miles west of Martinsdale. Turn right at Lennep onto Lennep Rd./Bonanza Creek Rd. and continue north 4.0 miles. Reservoir is located on the left ~0.1 miles on unnamed trail.							
3	Castle Lake	T8N, R8E, S22	46.4403 -110.7128	Federal (USFS)	Ringling	Westslope Cutthroat Trout	2.5-acre mountain lake. 500 2" westslope cutthroat trout are stocked biennially. Access DIFFICULT
11-acre mountain lake.							
4	Forest Lake	T6N, R10E, S26	46.4403 -110.4343	Federal (USFS)	Ringling	Westslope Cutthroat Trout x Yellowstone Cutthroat Trout Hybrids	
Directions: Travel Hwy 294 5.5 miles west of Martinsdale. Turn left on Cottonwood Creek Rd. and continue south 6.3 miles. Turn right onto Forest Lake Rd and continue 11.2 miles to Forest Lake Campground. A trail from the campground descends ~0.1 miles to Forest Lake.							
5	Martinsdale Reservoir	T8N, R11E, S18	46.4520 -110.2679	Private	Ringling	Rainbow Trout and Brown Trout	706-acre reservoir. 70,000 4-5" rainbow trout are stocked annually.

Directions: From Martinsdale continue south on Martinsdale Lake Rd. 1.8 miles to reservoir.

Meagher County Fishing Ponds



PETROLEUM COUNTY PONDS

Pond #	Pond Name	Pond Location	Lat/Long	Ownership	BLM Map	Game Fish Species	Comments
1	Box Elder (Vogel) Reservoir	T15N. R27E. S6	47.0953 -108.3392	Federal (BLM)	Winnett	Yellow Perch	57-acre reservoir. Illegal yellow perch stocking has produced a stunted perch fishery. Rainbow trout stocking has been discontinued.
Directions: 1/4 mile east of Winnett on Hwy 200 turn left (north) onto Valentine Rd. Continue 6.6 miles; turn right at BLM "Box Elder" sign							
2	Bubs Reservoir	T20N, R27E, S3	47.5234 -108.2516	Federal (BLM)	Zortman	Largemouth Bass	15-acre reservoir. Largemouth bass reproduce naturally.
Directions: Travel Hwy 191 29 miles north of Grass Range. Turn right onto Wilder Trail and continue for 12.5 miles. Turn right onto Musselshell Trail and continue 14.8 miles (4.1 miles east of Horse Camp Rd.). Turn right onto unnamed trail; reservoir is ~1 mile south							
3	Drag Creek Reservoir	T19N, R28E, S22	47.3871 -108.1324	Federal (BLM)	Winnett	Largemouth Bass and Bluegill	22-acre reservoir. 1000 largemouth bass are stocked annually. Overpopulation of bluegill has resulted in stunting.
Directions: 1/4 mile east of Winnett on Hwy 200 turn left (north) onto Valentine Rd. Continue 12.7 miles; veer right onto Dovetail Rd. Continue 13.8 miles; at Crooked Creek Road intersection turn right followed by a left ~1.0 mile. Continue on Crooked Creek Rd. for 9.2 miles; turn right at BLM "Drag Reservoir" sign onto unnamed trail. Reservoir is ~2 miles south on trail.							
4	Dry Blood Reservoir	T17N, R26E, S14	47.2278 -108.3768	Federal (BLM)	Winnett	Largemouth Bass and Black Crappie	38-acre reservoir. Multiple age-classes of black crappie were detected in 2015 sampling. Largemouth bass reproduce naturally.
Directions: 1/4 mile east of Winnett on Hwy 200 turn left (north) onto Valentine Rd. Continue 14.6 miles (1.9 miles north of Dovetail Rd. intersection). Turn left at BLM "Dry Blood" sign onto unnamed trail. Reservoir is ~1.5 miles on trail.							
5	Manuel Reservoir #2	T15N, R29E, S5	47.0946 -108.0771	Private	Winnett	Rainbow Trout	12-acre reservoir. 1000 4" rainbow trout are stocked annually. Landowner permission required.

Directions: 11.3 miles east of Winnett on Hwy 200 turn left (north) onto Jitney Rd. Travel 4.4 miles to intersection with Old Cat Creek Rd., and continue straight 3.0 miles on Cat Creek Rd. Turn left onto gated unnamed trail. Reservoir is ~1 mile north on trail.

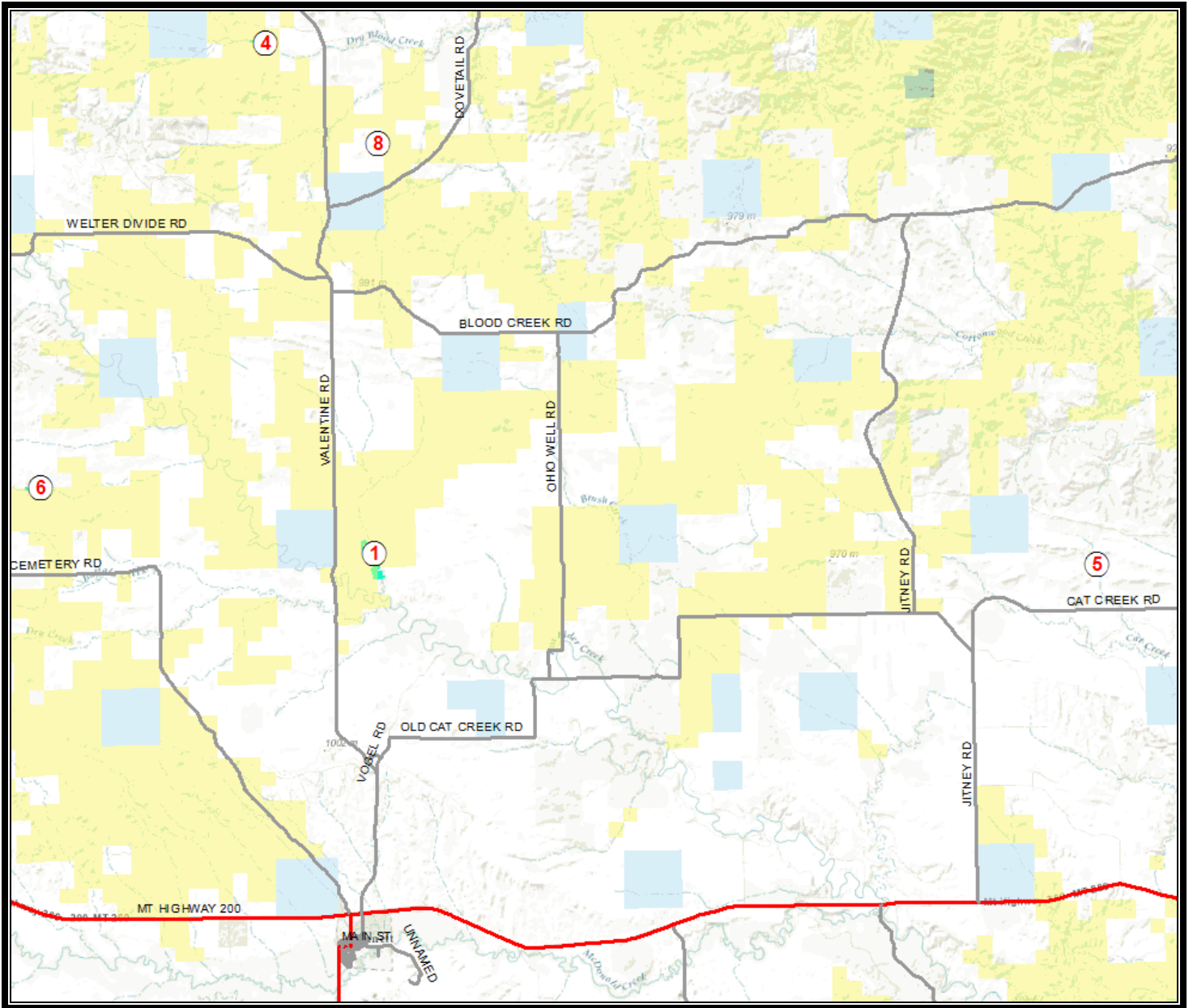
PETROLEUM COUNTY PONDS (continued)

Pond #	Pond Name	Pond Location	Lat/Long	Ownership	BLM Map	Game Fish Species	Comments
6	Payola Reservoir	T16N. R26E. S29	47.1183 -108.4584	Federal (BLM)	Winnett	Largemouth Bass and Yellow Perch	23-acre reservoir. 1500 largemouth bass are stocked annually.
Directions: At Winnett on Hwy 200 turn left (north) onto Cemetery Rd. Continue 9.3 miles; turn right at BLM "Payola" sign							
7	Petrolia Reservoir	T14N, R27E, S5	46.9408 -108.2359	Private	Musselshell	Walleye, Northern Pike, and Yellow Perch	409-acre reservoir. 20,000 1-2" walleye are stocked annually.
Directions: 5.7 miles east of Winnett on Hwy 200 turn right (south) onto Bench Rd. Travel 5.2 miles to intersection with Petrolia Bench Rd. Turn right on Petrolia Bench Road. Reservoir is ~1.5 miles west on road.							
8	South Fork Dry Blood Reservoir	T17N, R26E, S25	47.2093 -108.3521	Federal (BLM)	Winnett	Largemouth Bass	12-acre reservoir. Largemouth bass reproduce naturally.
Directions: 1/4 mile east of Winnett on Hwy 200 turn left (north) onto Valentine Rd. Continue 14.2 miles (1.5 miles North of Dovetail Rd. intersection). Turn right at BLM "South Fork Dry Blood" sign onto unnamed trail. Reservoir is visible from Valentine Rd.							
9	War Horse Reservoir	T16N, R25E, S28	47.1219 -108.5577	Federal (USFWS and BLM)	Winnett	Largemouth Bass	1447-acre reservoir. Largemouth bass stocking was initiated in 2015, and will continue until natural reproduction is verified.
Directions: Continue west of Winnett on Hwy 200 12.0 miles. Turn right onto Blakeslee Road and continue for 6.0 miles; War Horse Lake is located on the right.							
10	Yellow Water Reservoir	T13N, R26E, S7	46.9026 -108.4712	Federal (USFWS) and State	Musselshell	Rainbow Trout	430-acre reservoir. White suckers and carp are having negative impacts. Illegal stocking of yellow perch confirmed in 2015. Stocking of rainbow trout has been discontinued.

Directions: Continue south of Winnett on Hwy 244 6.8 miles. Turn right onto Yellow Water Road and continue for 5.3 miles. Veer left onto unnamed trail. Reservoir is 0.5 miles south of Yellow Water Road.

Petroleum County Fishing Ponds

Dry Blood, South Fork Blood, Manuel, Payola, and Box Elder



Petroleum County Fishing Ponds

Petrolia and Yellow Water Reservoirs

