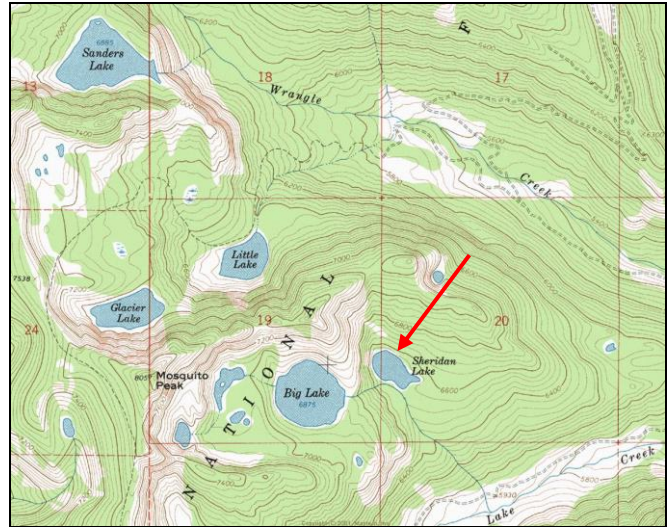


# Sheridan Lake



**Description:** Sheridan Lake is a moderate-sized (9.8 acres), remote glacial cirque lake located within designated Wilderness in the Rattlesnake Creek drainage near Missoula at ~ 6,535 ft elevation. To increase storage volume, the lake has been artificially impounded by a dam at the outlet. This structure elevates the normal surface water elevation, but may also increase annual water level fluctuations.

**Location:** T15N, R18W, Section 19/20; Latitude N47.0414°, Longitude W113.9110°; Nearest Town: Missoula, MT. Surrounding land ownership: Lolo National Forest (Missoula Ranger District). Sheridan Lake lies in the upper Lake Creek drainage within the Rattlesnake Wilderness Area.

**Access:** Although this lake is geographically close to the city of Missoula, access is difficult. There are several USFS routes from which to choose. Route distance and difficulty vary, but all require non-motorized travel. Common starting points are the trailheads at West Fork Gold Creek (Trail # 52), Ravine Creek in lower Grant Creek (Trail # 34), or in lower Rattlesnake Creek at the main Rattlesnake National Recreation Area trailhead (Gated Road #99). Please refer to USFS maps for specific travel routes and connecting trail numbers. Total travel distance from trailheads to the lake ranges from 9-17 miles. The trail adjacent to the lake is not maintained (grown-in).

**Camp Sites and Use:** Sheridan Lake lies in a remote setting that receives light use. There is no maintained trail to the lake (remnant trail is distinguishable in some places), and there are no established campsites. 'Leave no trace' camping and recreating is essential, as this lake lies within designated Wilderness.

**Angling Opportunity:** Sheridan Lake supports a wild rainbow trout population that has abundant natural reproduction. Shoreline topography and access lend well to shoreline angling from ~ 40% of the lake perimeter.

**Stocking History:** Sheridan Lake was historically stocked with rainbow trout and has not been planted in recent decades. There are no plans to stock in the future as the rainbow trout population is self-sustaining.

**Angling Pressure:** Estimated angling pressure from Montana state-wide mail surveys in 2005-2009 was low and averaged < 25 angler-days per year.

**Other Nearby Lakes:** There are several other lakes near Sheridan Lake. Big Lake lies less than 0.25 mile to the west and can easily be accessed on USFS Trail #1265. Worden Lake lies ~ 1 mile to the south and can easily be reached off USFS Trails #1265 and #534. There are also several fishless lakes just to the west of Big Lake (Rattlesnake Lakes #9, #10 and #11) below Mosquito Peak that can easily be reached via off-trail hiking.



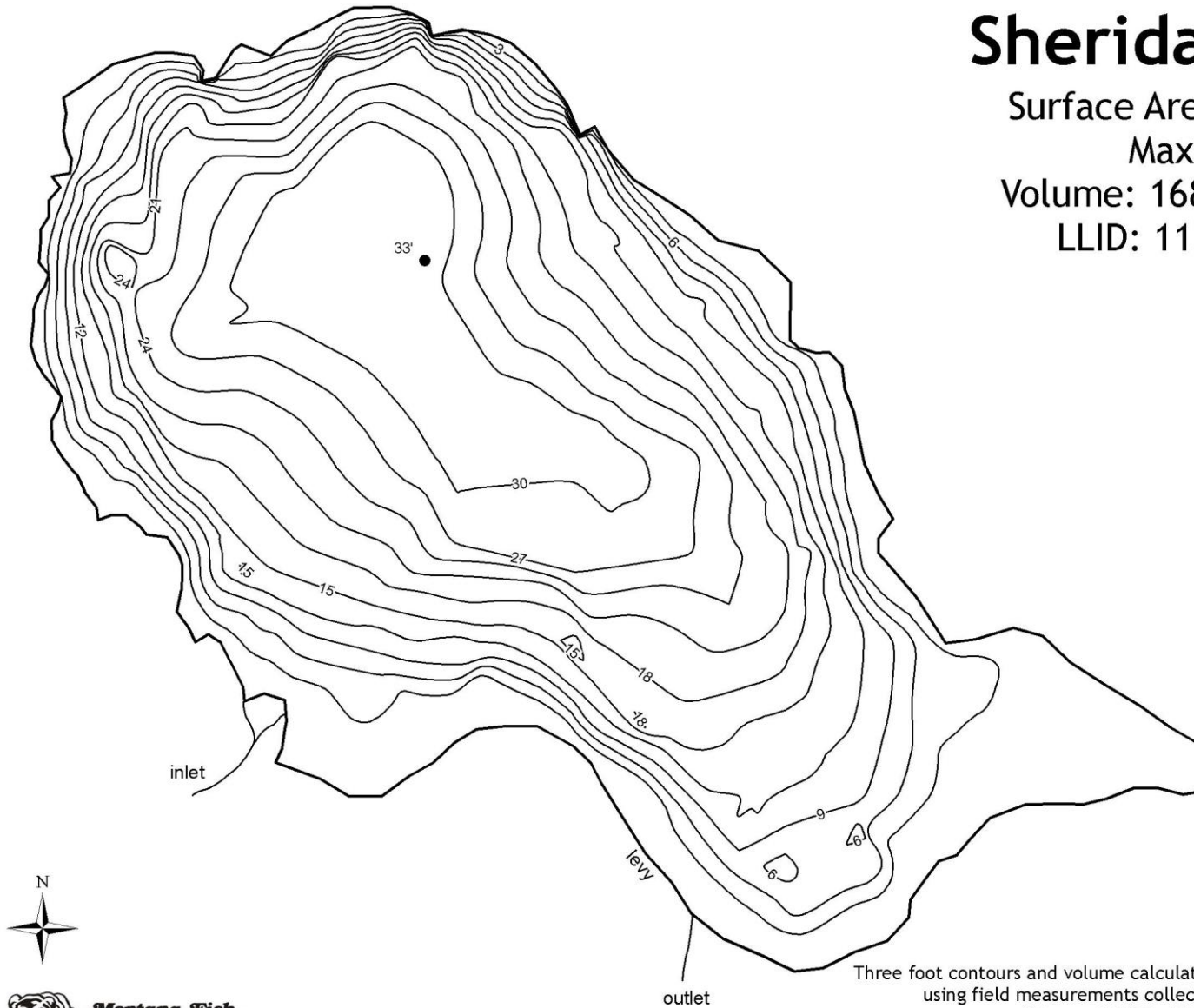
# Sheridan Lake

Surface Area: 9.8 acres

Max Depth: 33 ft

Volume: 168.4 acre-feet

LLID: 1139110470414



**Montana Fish,  
Wildlife & Parks**

0 125 250 500 Feet

Three foot contours and volume calculations produced in ArcMAP  
using field measurements collected September 13, 2007.  
IS Request 8035 - R2 Mountain Lake Bath Maps  
Strategic Planning and Data Services  
Helena, MT  
July 8, 2010

