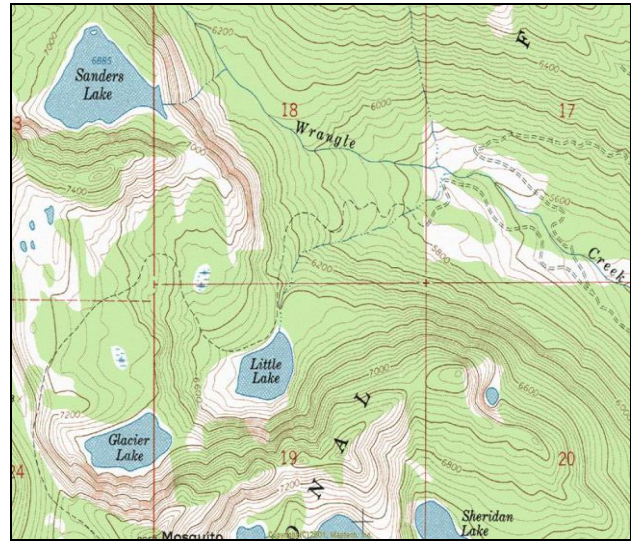


Sanders Lake



Description: Sanders Lake is a large (~ 48 acres), remote glacial cirque lake, located within designated Wilderness in the Rattlesnake Creek drainage near Missoula at ~ 6,885 ft elevation. To increase storage volume, the lake has been artificially impounded by a dam at the outlet. This structure elevates the normal surface water elevation, but may also contribute to greater annual water level fluctuations.

Location: T15N, R19W, Section 13; Latitude N47.0592°, Longitude W113.9365°; Nearest Town: Missoula, MT
Surrounding land ownership: Lolo National Forest (Missoula Ranger District). Sanders Lake is the second largest sub-alpine lake in the Rattlesnake Wilderness Area.

Access: Although Sanders Lake is geographically close to the city of Missoula, access is difficult. There are several USFS routes from which to choose. Route distance and difficulty vary, but all require non-motorized travel. Common starting points are the trailheads at West Fork Gold Creek (Trail # 52), Ravine Creek in lower Grant Creek (Trail # 34), or in lower Rattlesnake Creek at the main Rattlesnake National Recreation Area trailhead (Gated Road #99). Please refer to USFS maps for specific travel routes and connecting trail numbers. Total travel distance from trailheads to lake ranges from 9-17 miles.

Camp Sites and Use: Sanders Lake lies in a remote setting that receives light use. There is an established trail to the lake (USFS Trail #517) and one primitive campsite. 'Leave no trace' camping and recreating is essential, as the lake lies within the Rattlesnake Wilderness.

Angling Opportunity: Sanders Lake supports a wild westslope cutthroat trout population that has moderate natural reproduction. Shoreline topography and access allow for shoreline angling along about half of the lake perimeter.

Stocking History: Stocking records indicate that Sanders Lake has been stocked several times with westslope cutthroat trout, but not since 1977. No future stocking is planned as the cutthroat trout population is self-sustaining.

Angling Pressure: Estimated angling pressure from Montana state-wide mail surveys in 2005-2009 was low and averaged less than 50 angler-days per year.

Other Nearby Lakes: There are two other lakes in the immediate vicinity of Sanders Lake. Little Lake is ~ 0.8 mi southeast and Glacier Lake lies ~0.9 mi to the south. Both lakes are easily accessible via established trails from Sanders Lake (USFS Trails #502 & #517). Big Lake and Sheridan Lake are also less than 1.5 miles southeast of Sanders Lake, but accessing them directly would be difficult as they lie on the opposite side of a steep ridge.



**Montana Fish,
Wildlife & Parks**

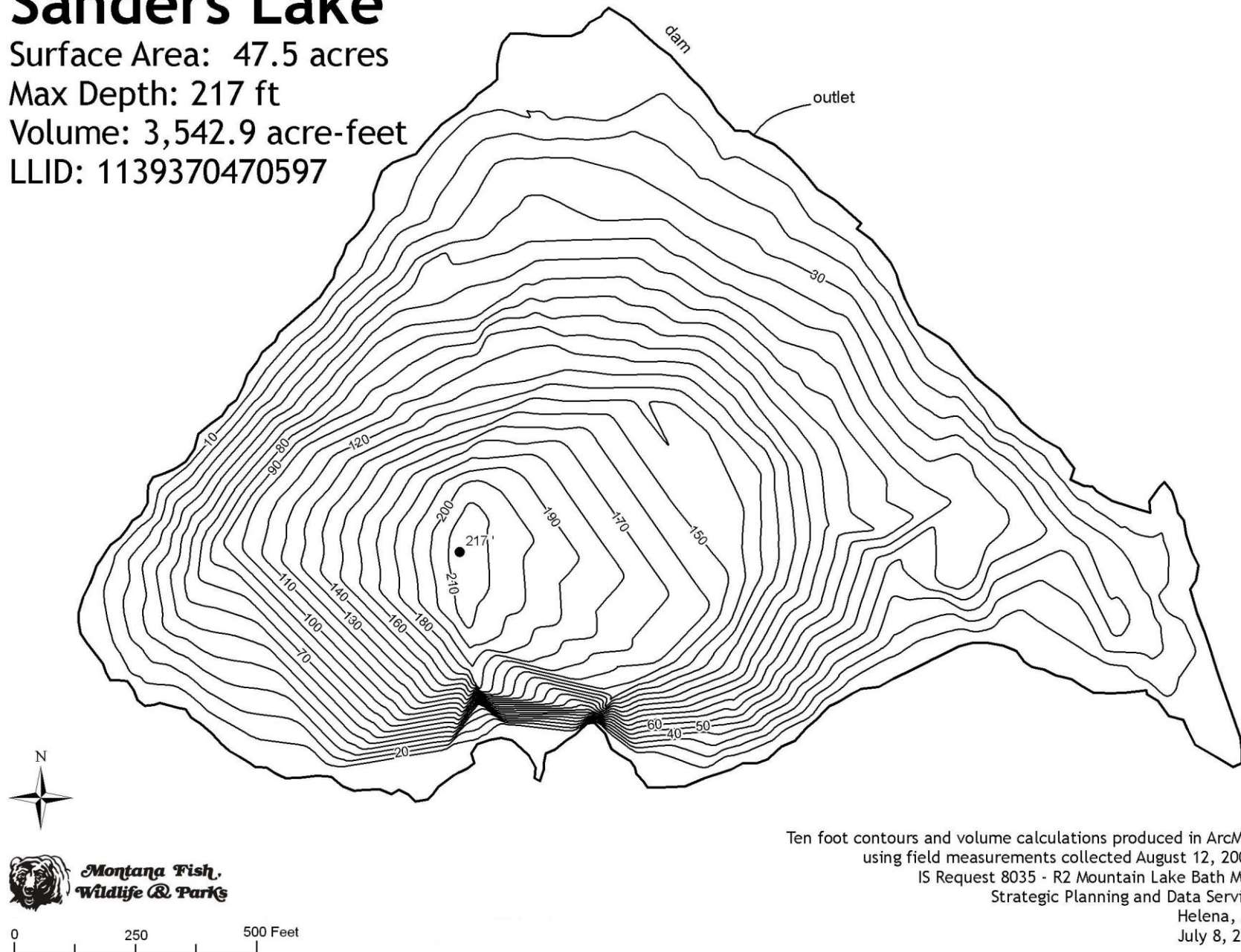
Sanders Lake

Surface Area: 47.5 acres

Max Depth: 217 ft

Volume: 3,542.9 acre-feet

LLID: 1139370470597



Ten foot contours and volume calculations produced in ArcMAP
using field measurements collected August 12, 2008.
IS Request 8035 - R2 Mountain Lake Bath Maps
Strategic Planning and Data Services
Helena, MT
July 8, 2010