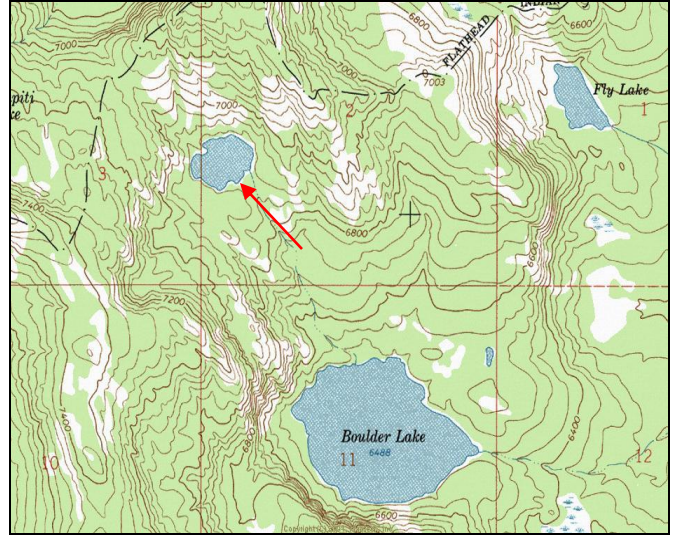


# Gold Creek Lake



**Description:** Gold Creek Lake is a moderate-sized (13.8 acres), remote glacial cirque lake located in the Rattlesnake Wilderness in the Gold Creek drainage near Missoula at 6,870 ft elevation.

**Location:** T15N, R18W, Section 2; Latitude N47.0855°, Longitude W113.8470°; Nearest Town: Missoula, MT  
Surrounding land ownership: Lolo National Forest (Missoula Ranger District). Gold Creek Lake lies in the eastern portion of the Rattlesnake Wilderness Area.

**Access:** Access to Gold Creek Lake can most easily be obtained by taking USFS Road #126 (Gold Creek Road) off U.S. Highway 200 east of Missoula. Travel on Road #126 for ~ 6 miles, then USFS Road #2103 for ~ 5 miles and finally USFS Road #4323 for ~ 5 miles to the West Fork Gold Creek Trailhead and USFS Trail #333. From here, it is a ~ 5.5-mile hike on Trail #333 to Boulder Lake. From Boulder Lake, hike ~ 0.7 mile up the stream drainage on the northwest side of Boulder Lake (off-trail). This stream is the outlet of Gold Creek Lake. Gold Creek Lake can also be reached by hiking off-trail across difficult terrain for ~ 1.2 mi to the west from Fly Lake.

**Camp Sites and Use:** Gold Creek Lake lies in a remote setting that receives light use. There is a remnant trail around the lake and a campsite with fire ring. 'Leave no trace' camping and recreating is essential, as the lake lies within the Rattlesnake Wilderness.

**Angling Opportunity:** Gold Creek Lake supports a westslope cutthroat trout population that has limited natural reproduction and is supplemented with stocking. Shoreline topography and access lend well to shoreline angling along most of the lake perimeter.

**Stocking History:** Gold Creek Lake has been stocked numerous times with westslope cutthroat trout - most recently in 2007. In the future, Gold Creek Lake will likely be stocked every 5-7 years with westslope cutthroat trout.

**Angling Pressure:** Estimated angling pressure from Montana state-wide mail surveys in 2005-2009 was moderate and averaged ~ 100 angler-days per year.

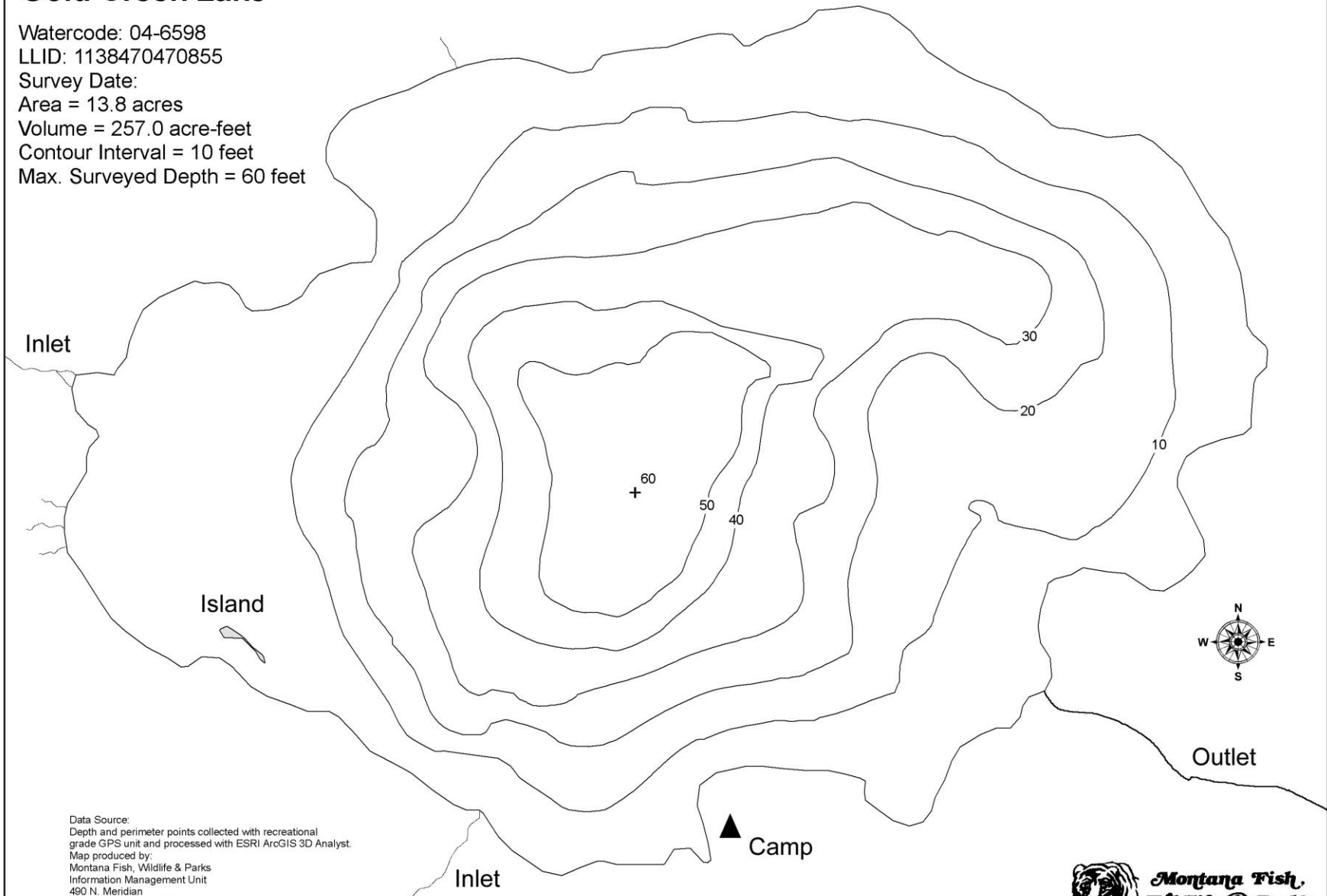
**Other Nearby Lakes:** There are two other lakes near Gold Creek Lake. Boulder Lake is less than a mile southeast of Gold Creek Lake, and getting to it requires off-trail hiking through steep and densely forested terrain. Fly Lake lies ~ 1.2 mi to the east-northeast and would also require off-trail hiking to reach it from Gold Creek Lake.



**Montana Fish,  
Wildlife & Parks**

# Gold Creek Lake

Watercode: 04-6598  
LLID: 1138470470855  
Survey Date:  
Area = 13.8 acres  
Volume = 257.0 acre-feet  
Contour Interval = 10 feet  
Max. Surveyed Depth = 60 feet



Data Source:  
Depth and perimeter points collected with recreational  
grade GPS unit and processed with ESRI ArcGIS 3D Analyst.  
Map produced by:  
Montana Fish, Wildlife & Parks  
Information Management Unit  
490 N. Meridian  
Kalispell, Montana 59901  
November 13, 2006

