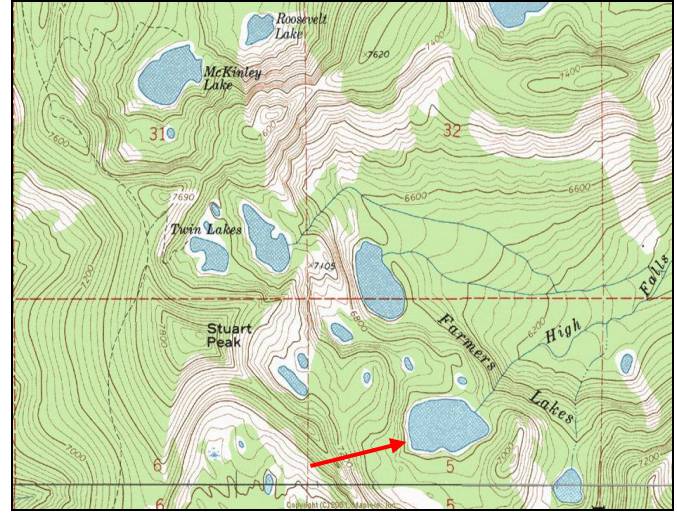


Farmers Lake #5 (Peterson Lake)



Description: Farmers Lake #5 is a relatively large (20.5 acres) glacial cirque lake located within designated Wilderness at the headwaters of High Falls Creek (tributary to Rattlesnake Creek) at ~ 6,750 ft elevation. Although this lake is easily capable of supporting a trout fishery, there is no record of fish ever being present. To increase storage volume, the lake was artificially impounded in the early 1900s by a dam at the outlet. This structure elevates the normal surface water elevation, but may also contribute to greater annual water level fluctuations.

Location: T14N, R18W, Section 5; Latitude N47.0025°, Longitude W113.9020°; Nearest Town: Missoula, MT
Surrounding land ownership: Lolo National Forest (Missoula Ranger District). Farmers Lake #5 lies near the southern boundary of the Rattlesnake Wilderness Area.

Access: Although this lake is geographically close to the city of Missoula, access is very difficult. There are several USFS routes from which to choose. Route distance and difficulty vary, but all require non-motorized travel. Common starting points are the trailheads at West Fork Gold Creek (Trail # 52), Ravine Creek in lower Grant Creek (Trail # 34), or in lower Rattlesnake Creek at the main Rattlesnake National Recreation Area trailhead (Gated Road #99). Please refer to USFS maps for specific travel routes and connecting trail numbers. Total travel distance from trailheads to the lake ranges from 7-19 miles.

Camp Sites and Use: Farmers Lake #5 lies in a remote setting that receives very light use. There is a trail from Farmers Lake #6, but there are no established campsites. 'Leave no trace' camping and recreating is essential, as the lake lies within designated Wilderness.

Angling Opportunity: None. No fish were observed or captured at the time of sampling in 2008.

Stocking History: There are no records of stocking in Farmers Lake #5.

Other nearby Lakes: There are several other lakes near Farmers Lake #5. Farmers Lake #6 supports an abundant cutthroat trout fishery and lies ~ 0.6 to the north on U.S. Forest service Trail #330. Four small fishless lakes (> 1 acre) are also within 0.7 miles to the northwest or southeast. These include Farmers Lake #4 and Rattlesnake Lake #4. These lakes lie at similar elevations and can be reached via off-trail hiking through moderate, forested terrain.



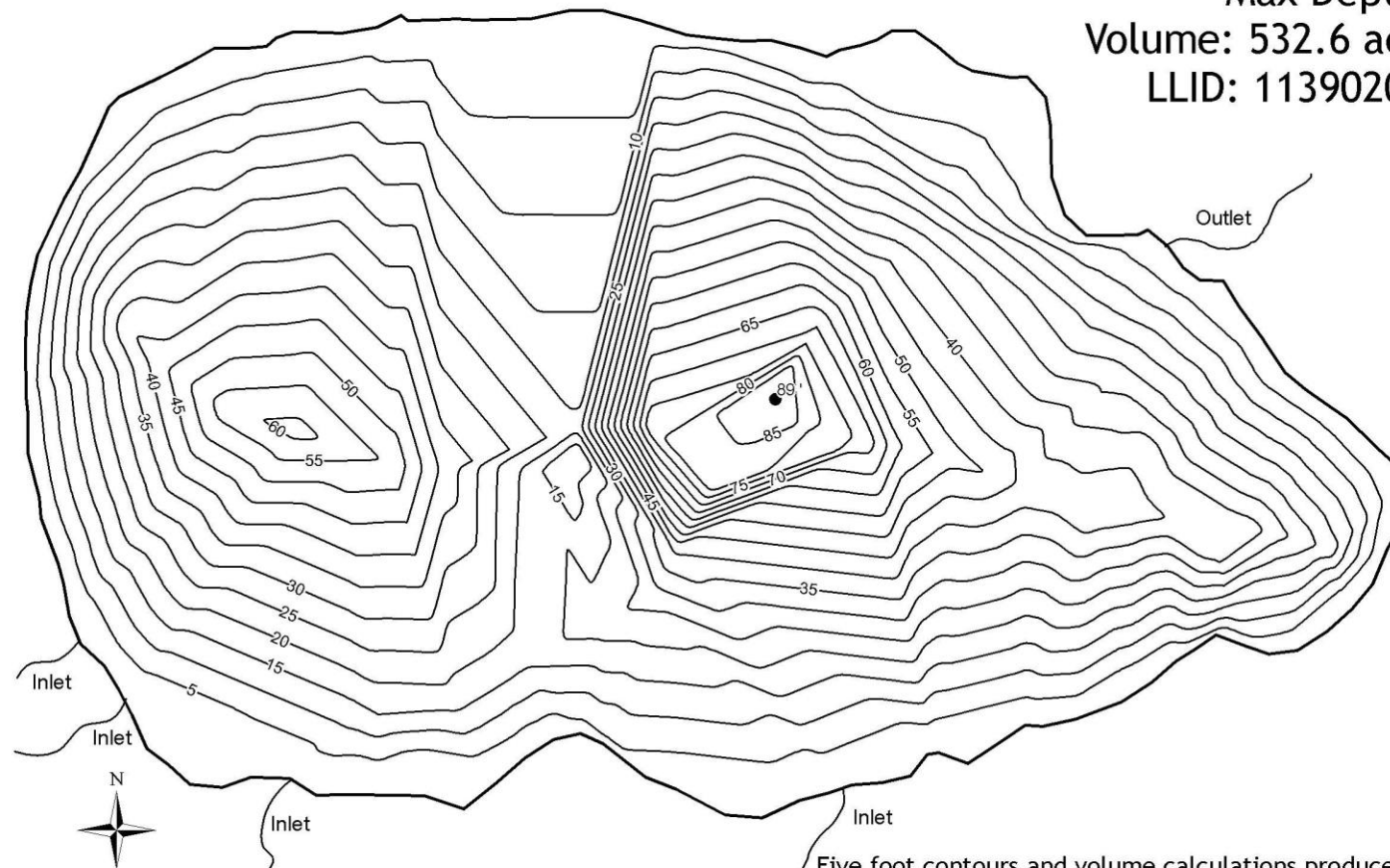
Farmers Lake #5 (Peterson Lake)

Surface Area: 20.5 acres

Max Depth: 89 ft

Volume: 532.6 acre-feet

LLID: 1139020470025



**Montana Fish,
Wildlife & Parks**

0 250 500 Feet

Five foot contours and volume calculations produced in ArcMAP
using field measurements collected August 5, 2008.

IS Request 8035 - R2 Mountain Lake Bath Maps

Strategic Planning and Data Services

Helena, MT

July 8, 2010