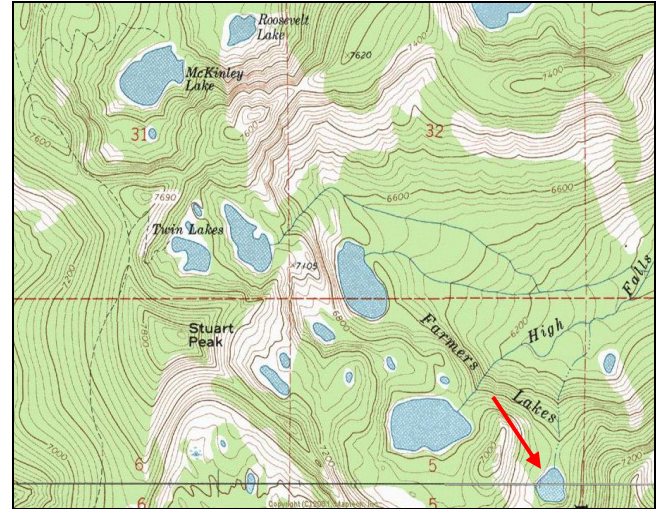


Farmers Lake #4



Description: Farmers Lake #4 is a small (5.5 acres) glacial cirque lake located at the headwaters of High Falls Creek (tributary of Rattlesnake Creek) at ~ 6,630 ft elevation. The lake is a fairly shallow (max depth 14 ft) and there is no evidence that it ever supported fish.

Location: T14N, R18W, Section 5; Latitude N46.9998°, Longitude W113.8930°; Nearest Town: Missoula, MT
Surrounding land ownership: Lolo National Forest (Missoula Ranger District). Farmers Lake #4 lies near the southern boundary of the Rattlesnake Wilderness Area.

Access: Although this lake is geographically close to the city of Missoula, access is very difficult. There are several USFS routes from which to choose. Route distance and difficulty vary, but all require non-motorized travel. Common starting points are the trailheads at West Fork Gold Creek (Trail # 52), Ravine Creek in lower Grant Creek (Trail # 34), or in lower Rattlesnake Creek at the main Rattlesnake National Recreation Area trailhead (Gated Road #99). Please refer to USFS maps for specific travel routes and connecting trail numbers. Total travel distance from trailheads to lake ranges from 7-19 miles.

Camp Sites and Use: Farmers Lake #4 lies in a remote setting that receives very light use. There is a remnant trail to the lake from Farmers Lake #5, but there are no campsites at the lake. 'Leave no trace' camping and recreating is essential, as the lake lies within designated Wilderness.

Angling Opportunity: None. No fish were observed or captured at the time of sampling in 2010.

Stocking History: There are no records of stocking in Farmers Lake #4.

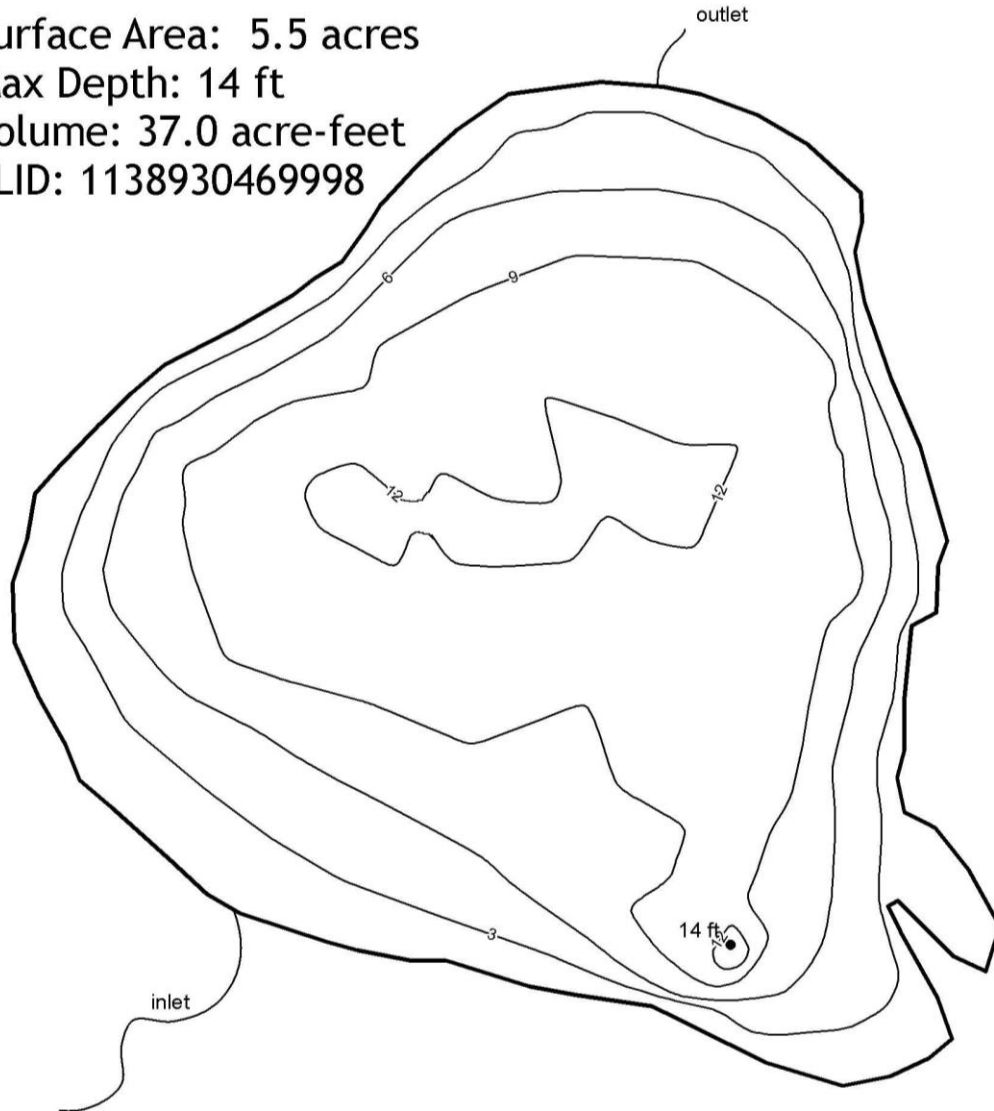
Other nearby Lakes: There are several other fishless lakes near Farmers Lake #4. Farmers Lake #5 (Peterson Lake) lies ~ 0.5 miles to the northwest and can be reached via an unmaintained trail. Although Farmers Lakes #1, #2 and #3 all lie within 1.5 miles, travel routes to these lakes would require crossing difficult terrain and steep ridges. Farmers Lake #6 (Cliff Lake) supports an abundant cutthroat trout fishery and can be reached by hiking ~ 1 mile on unmaintained trails.



**Montana Fish,
Wildlife & Parks**

Farmers Lake #4

Surface Area: 5.5 acres
Max Depth: 14 ft
Volume: 37.0 acre-feet
LLID: 1138930469998



**Montana Fish,
Wildlife & Parks**



Three foot contours and volume calculations produced in ArcMAP
using field measurements collected August 17, 2007.
IS Request 8035 - R2 Mountain Lake Bath Maps
Strategic Planning and Data Services
Helena, MT
June 8, 2010