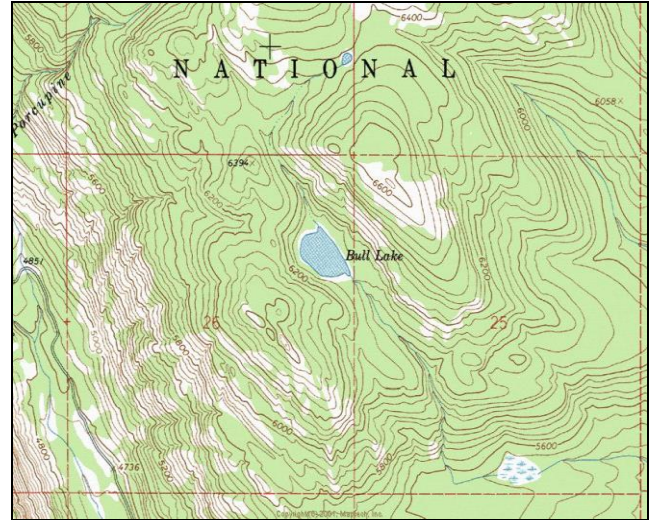


Bull Lake



Description: Bull Lake is a small (8.9 acres), valley depression lake located within designated Wilderness in the Gold Creek drainage near Missoula at 6,099 ft elevation. Much of the lake shoreline was burned in a recent forest fire.

Location: T15N, R18W, Section 26; Latitude N47.0327°, Longitude W113.8290°; Nearest Town: Missoula, MT
Surrounding land ownership: Lolo National Forest (Missoula Ranger District). Bull Lake lies within the Rattlesnake Wilderness Area.

Access: Access to Boulder Lake can most easily be obtained by taking USFS Road #126 (Gold Creek Road) off U.S. Highway 200 east of Missoula. Travel on Road #126 for ~ 6 miles, then USFS Road #2103 for ~ 5 miles and finally USFS Road #4323 for ~ 5 miles to the West Fork Gold Creek Trailhead. There is no trail to Bull Lake and access requires a ~ 0.6-mile hike through a recent burn with extensive downfall.

Camp Sites and Use: Bull Lake lies in a remote setting and receives relatively light use. There is a trail around most of the lake, but no established campsites. 'Leave no trace' camping and recreating is essential, as the lake lies within designated Wilderness.

Angling Opportunity: Bull Lake supports a westslope cutthroat trout population that has limited natural reproduction. Shoreline topography and access lend well to shoreline angling along most of the lake perimeter.

Stocking History: Bull Lake has been stocked with westslope cutthroat trout several times since 1977. In the future, it will likely be stocked every 5-7 years with westslope cutthroat trout.

Angling Pressure: Estimated angling pressure from Montana state-wide mail surveys in 2005-2009 was light and averaged < 50 angler-days per year.

Other Nearby Lakes: There are no other lakes in the immediate vicinity of Bull Lake. Boulder Lake, Fly Lake, and Gold Creek Lake all lie ~ 3 miles north of Bull Lake, but accessing them is much easier via alternative routes from the upper Gold Creek or West Fork Gold Creek trailheads.



**Montana Fish,
Wildlife & Parks**

Bull Lake

Watercode: 04-6225

LLID: 1138290470327

Survey Date:

Area = 8.9 acres

Volume = 183.4 acre-feet

Contour Interval = 10 feet

Max. Surveyed Depth = 43 feet



Data Source:
Depth and perimeter points collected with recreational
grade GPS unit and processed with ESRI ArcGIS 3D Analyst.
Map produced by:
Montana Fish, Wildlife & Parks
Information Management Unit
490 N. Meridian
Kalispell, Montana 59901
November 13, 2006

