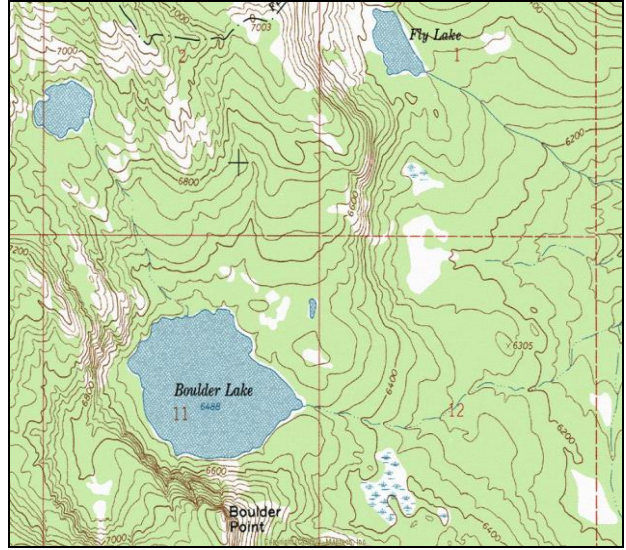


Boulder Lake



Description: Boulder Lake is a very large (107.5 acres), remote glacial cirque lake located within designated Wilderness in the Gold Creek drainage near Missoula at 6,488 ft elevation. This is the largest lake within the Rattlesnake Wilderness Area.

Location: T15N, R18W, Section 11; Latitude N47.0744°, Longitude W113.8350°; Nearest Town: Missoula, MT. Surrounding land ownership: Lolo National Forest (Missoula Ranger District). Boulder Lake lies in the eastern portion of the Rattlesnake Wilderness Area.

Access: Access to Boulder Lake can most easily be obtained by taking USFS Road #126 (Gold Creek Road) off U.S. Highway 200 east of Missoula. Travel on Road #126 for ~ 6 miles, then USFS Road #2103 for ~ 5 miles and finally USFS Road #4323 for ~ 5 miles to the West Fork Gold Creek Trailhead and USFS Trail #333. From here, it is a ~ 5.5-mile hike on Trail #333 to Boulder Lake.

Camp Sites and Use: Boulder Lake lies in a remote setting that receives moderate use. There is an established trail around the lake with multiple campsites and fire rings. 'Leave no trace' camping and recreating is essential, as the lake lies within designated Wilderness.

Angling Opportunity: Boulder Lake currently supports a westslope cutthroat trout population with moderate natural reproduction that has been periodically supplemented with stocking. Shoreline topography and access lend well to shoreline angling along most of the lake perimeter.

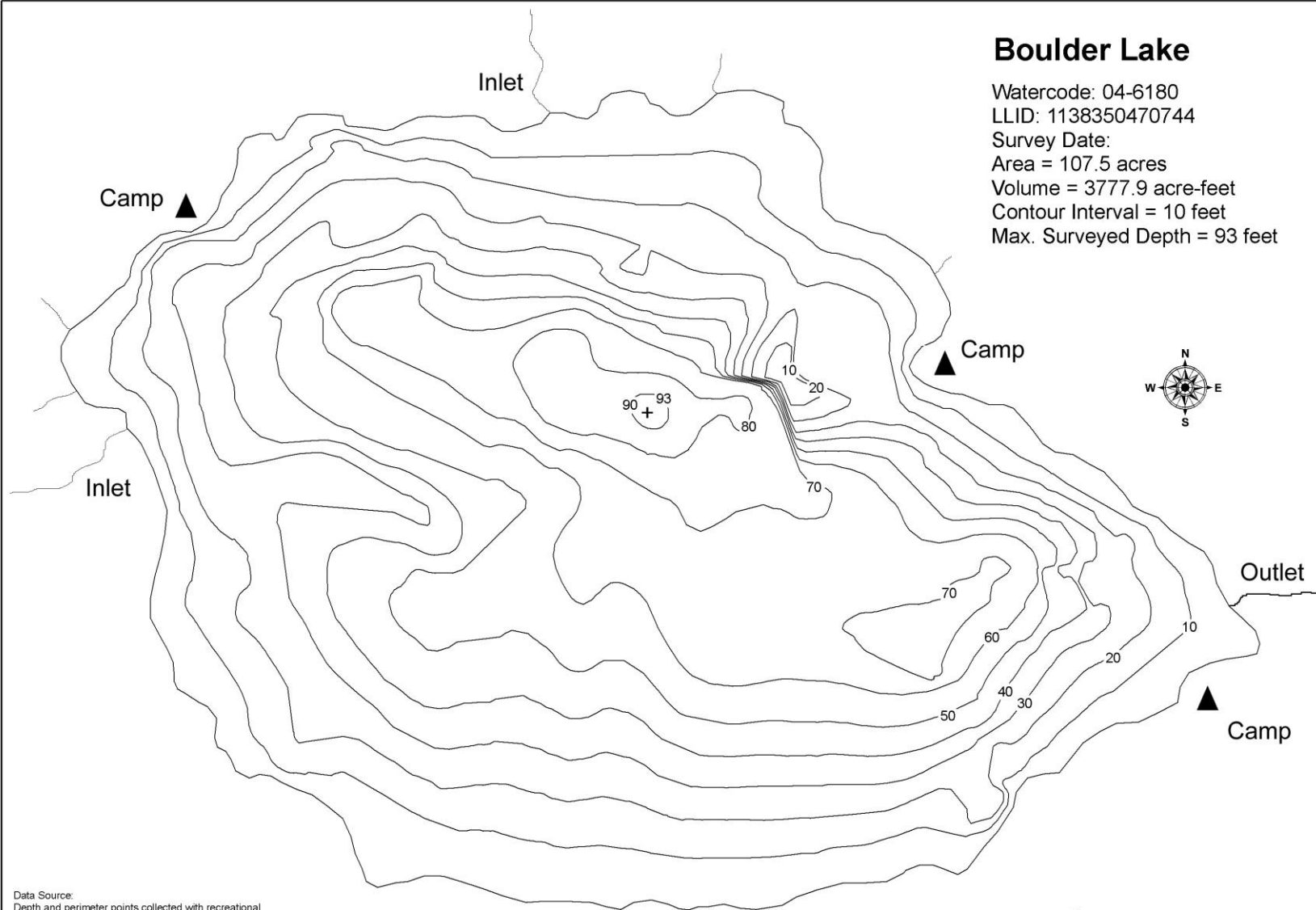
Stocking History: Boulder Lake has been stocked with both Yellowstone and westslope cutthroat trout. The most recent plant occurred in 2000, when 5,550 westslope cutthroat trout were stocked. Regular stocking is not planned for this lake as natural reproduction appears adequate to support the fishery.

Angling Pressure: Estimated angling pressure from Montana state-wide mail surveys in 2005-2009 was low and averaged < 50 angler-days per year.

Other Nearby Lakes: There are two other lakes near Boulder Lake. Fly Lake lies less than one mile to the northeast. Travel to this lake from Boulder Lake would require off-trail hiking through steep and densely forested terrain. Fly Lake can also be accessed via USFS Trails #358 and #336, from the main Gold Creek trailhead. Gold Creek Lake lies less than one mile northwest of Boulder Lake. To access it, hike off-trail along the west side of Boulder Lake to the north and follow the stream drainage to the Gold Creek Lake outlet.

Boulder Lake

Watercode: 04-6180
LLID: 1138350470744
Survey Date:
Area = 107.5 acres
Volume = 3777.9 acre-feet
Contour Interval = 10 feet
Max. Surveyed Depth = 93 feet



Data Source:
Depth and perimeter points collected with recreational
grade GPS unit and processed with ESRI ArcGIS 3D Analyst.
Map produced by:
Montana Fish, Wildlife & Parks
Information Management Unit
490 N. Meridian
Kalispell, Montana 59901
November 13, 2006



**Montana Fish,
Wildlife & Parks**