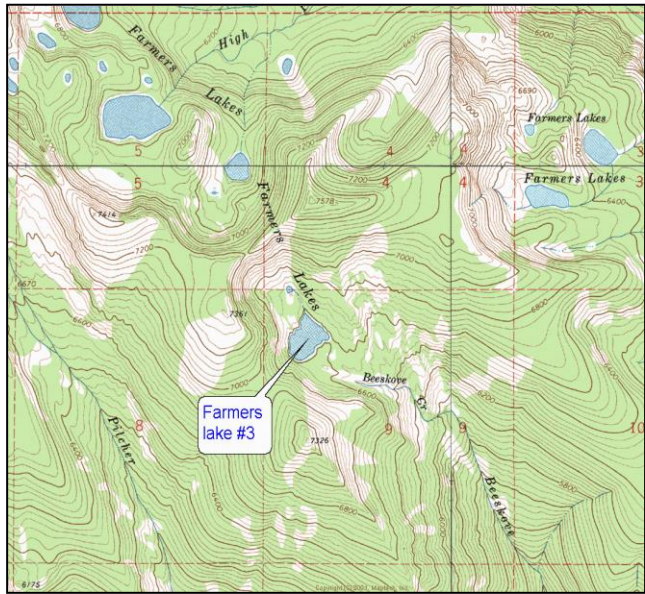


# Farmers Lake #3



**Description:** Farmers Lake #3 is a moderate-sized (9.5 acres), very remote glacial cirque lake located just south of the Wilderness boundary in the Rattlesnake Creek drainage at ~ 6,597 ft elevation. Although certainly capable of supporting a trout fishery, there is no record of fish ever being present in the lake.

**Location:** T14N, R18W, Section 9; N46.9908°, Longitude W113.8882°; Nearest Town: Missoula, MT  
Surrounding land ownership: Lolo National Forest (Missoula Ranger District). Farmers Lake #3 lies just outside the southern boundary of the Rattlesnake Wilderness Area at the head of Bees Cove Creek.

**Access:** Although this lake is geographically close to the city of Missoula, access is very difficult. There are several USFS routes from which to choose. Route distance and difficulty vary, but all require non-motorized travel. Common starting points are the trailheads at West Fork Gold Creek (Trail # 52), Ravine Creek in lower Grant Creek (Trail # 34), or in lower Rattlesnake Creek at the main Rattlesnake National Recreation Area trailhead (Gated Road #99). Please refer to USFS maps for specific travel routes and connecting trail numbers. Regardless of the route, travel to the lake from the trail system will require strenuous hiking over steep, difficult terrain. Total travel distance from trailheads to lake ranges from 7-19 miles.

**Camp Sites and Use:** Farmers Lake #1 lies in a remote setting that receives very light use. There are no established trails to the lake and no campsites. One fire ring was observed at the lake. 'Leave no trace' camping and recreating is recommended, as this lake lies within the Rattlesnake National Recreation Area.

**Angling Opportunity:** None. No fish were observed or captured at the time of sampling in 2010.

**Stocking History:** There are no records of stocking in Farmers Lake #3.

**Other nearby Lakes:** There are several other small fishless lakes near Farmers Lake #3. Farmers Lakes #1 and #2 are located 1.0-1.3 miles to the northeast. Both lakes lie at similar elevations and can be reached via off-trail hiking through moderately steep terrain. Farmers Lake #4 is located ~ 0.75 miles to the north, but access from Farmers Lake #3 would require travel over a steep ridge.



## Farmer's Lake #3

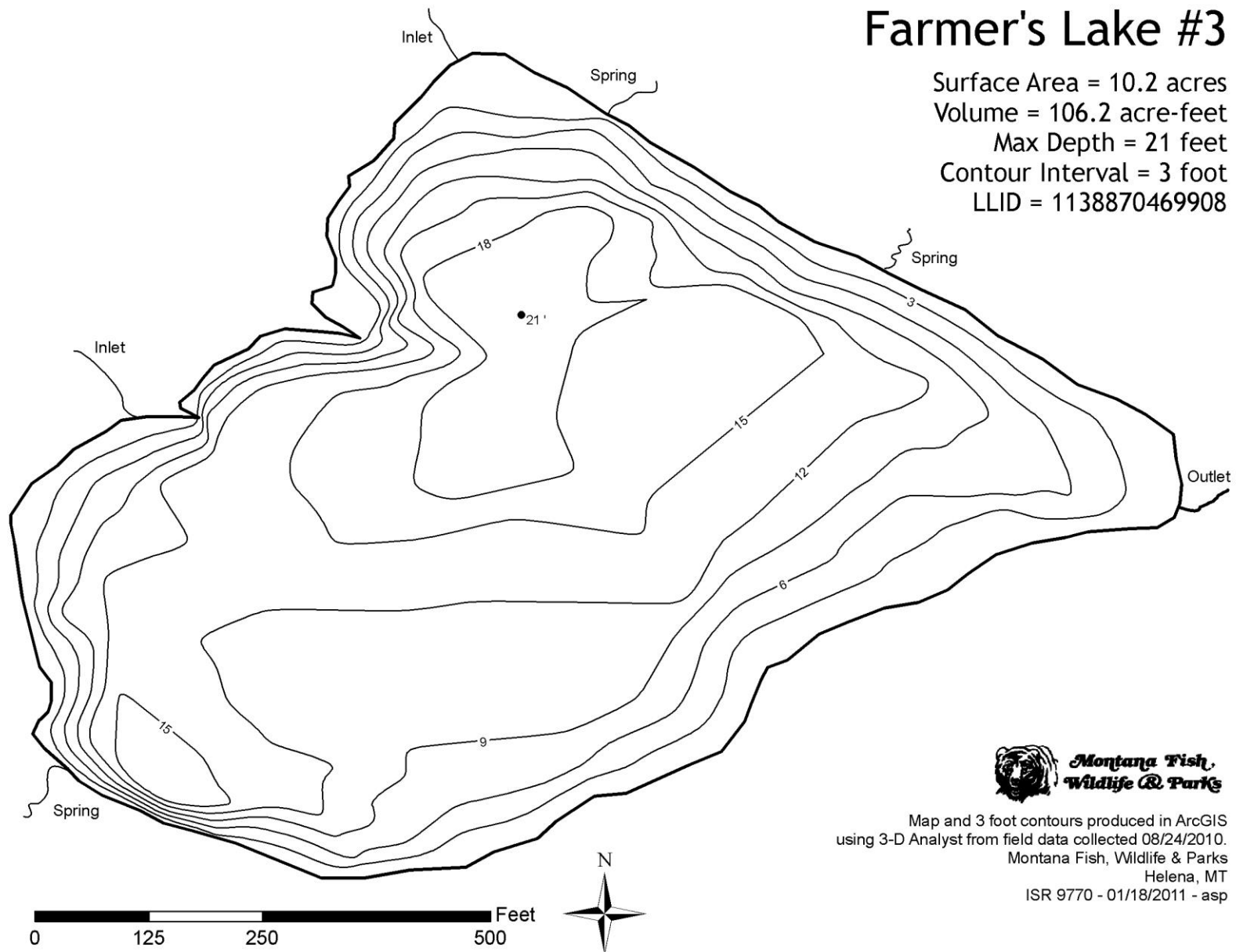
Surface Area = 10.2 acres

Volume = 106.2 acre-feet

Max Depth = 21 feet

Contour Interval = 3 foot

LLID = 1138870469908



**Montana Fish,  
Wildlife & Parks**

Map and 3 foot contours produced in ArcGIS  
using 3-D Analyst from field data collected 08/24/2010.

Montana Fish, Wildlife & Parks

Helena, MT

ISR 9770 - 01/18/2011 - asp