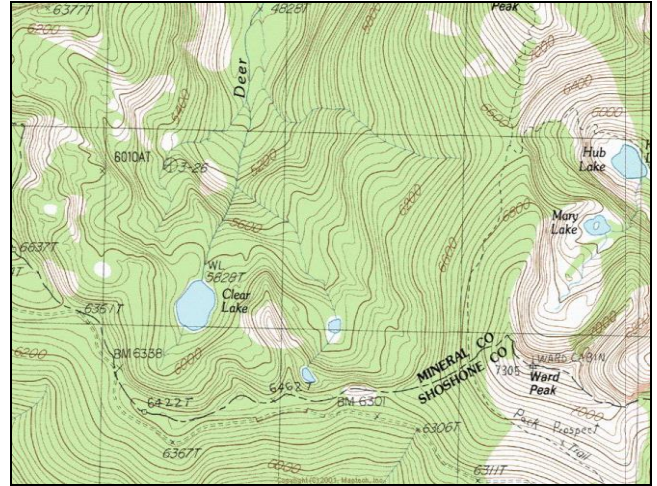
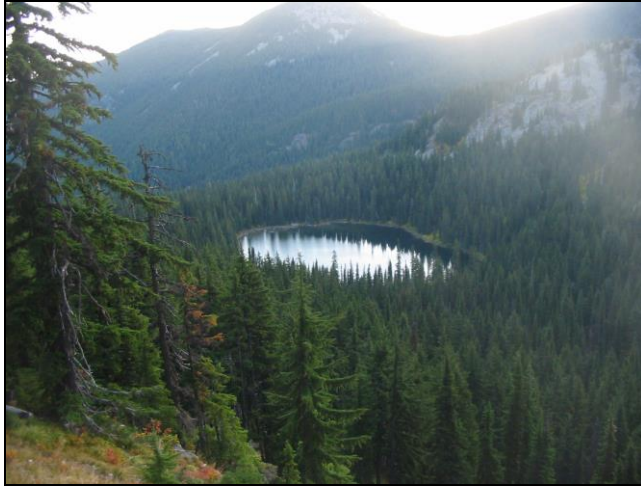


Clear Lake



Description: Clear Lake is a small (8.8 acres), remote glacial cirque lake located near the Idaho border in the Deer Creek (St. Regis River) drainage at 5,828 ft elevation. The lake lies on the Lolo National Forest (Superior Ranger District).

Location: T17N, R30W, Section 3; Latitude N 47.2693°, Longitude W 115.4070°; Nearest Town: St. Regis, MT

Access: Clear Lake is most easily accessed by taking USFS Road #282 (North Fork Little Joe Creek Road) southwest from St. Regis, MT. Once you reach the Idaho border, take USFS Road #391 northwest approximately 7.5 miles. At this point above the lake, there is a vehicle pull-out and small campsite from which one can see the lake. There is a short, steep unofficial trail (<0.5 mile) from the campsite to the lake.

Campsites and Use: Clear Lake lies in a remote setting, but can be accessed relatively easily if roads are passable. It receives light to moderate use. There is an established trail around the lake and a campsite near the outlet. 'Leave no trace' camping and recreating is encouraged in this area.

Angling Opportunity: Clear Lake supports a population of brook trout that has adequate natural reproduction. Brook trout harvest is encouraged. Shoreline topography and access lends well to shoreline angling.

Stocking History: Stocking records indicate that Clear Lake was stocked in 1936 with brook trout. No subsequent stocking has occurred or is planned.

Angling Pressure: Estimated angling pressure from Montana state-wide mail surveys in 1995-2005 was low and averaged 52 angler-days per year.

Other Nearby Lakes: There are several other lakes in the area. Square Lake is about two miles east of Clear Lake and has a similar trail from USFS Road #391. Hazel and Hub Lakes are near Square Lake, but accessing them from USFS Road #391 will require considerably more hiking via USFS Trails #262, #280, and/or #250. Rudie Lake and Crystal Lake are less than 2 miles north-northwest of Clear Lake, but would also require hiking approximately two miles on Trail #269.

Clear Lake

Watercode: 05-8557

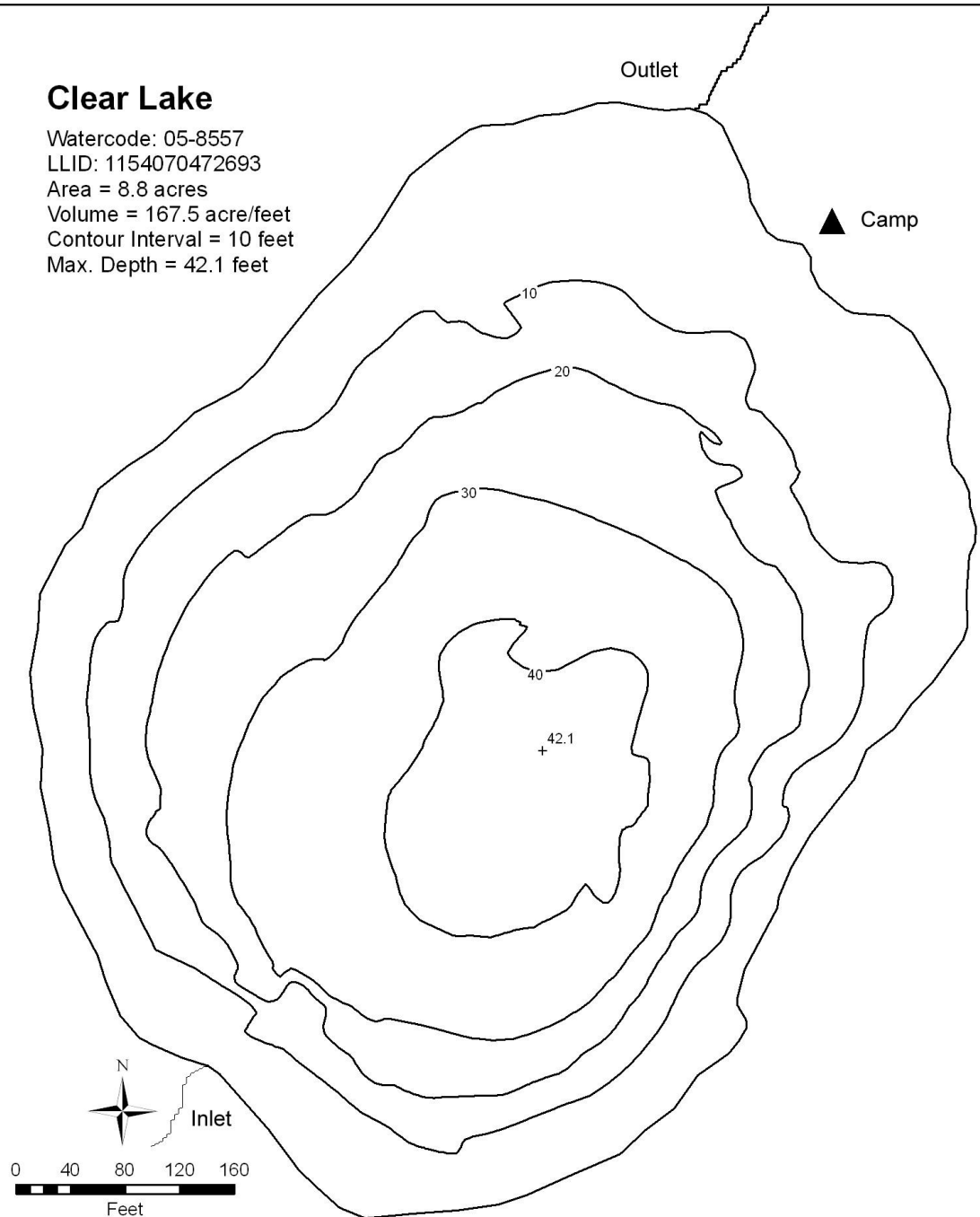
LLID: 1154070472693

Area = 8.8 acres

Volume = 167.5 acre/feet

Contour Interval = 10 feet

Max. Depth = 42.1 feet



Data Source:
Depth and perimeter points collected with recreational
grade GPS unit and processed with ESRI ArcGIS 3D Analyst.
Map produced by:
Montana Fish, Wildlife & Parks
Information Management Unit
490 N. Meridian
Kalispell, Montana 59901
June 14, 2008

