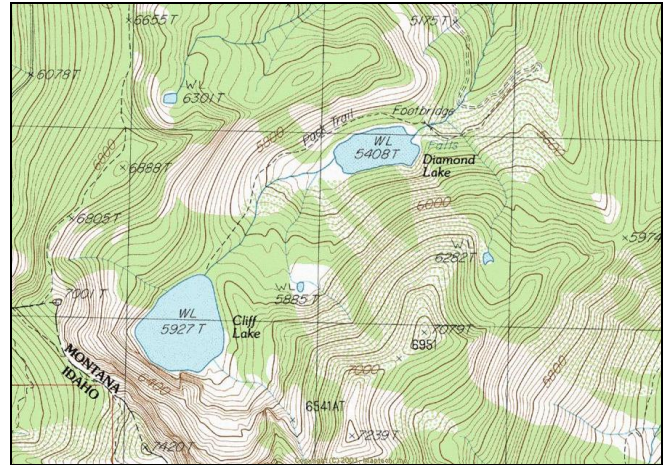


# Cliff Lake



**Description:** Cliff Lake is a large (40.8 acres), very deep (180 ft), glacial cirque lake located near the Idaho border at the top of the Dry Creek drainage at 5,927 ft elevation. The lake lies on the Lolo National Forest (Superior Ranger District).

**Location:** T16N, R28W, Section 18,19; Latitude N47.1388°, Longitude W115.1900°; Nearest Town: Superior, MT.

**Access:** The easiest access to Cliff Lake is to take USFS Road #342 southwest from Interstate Highway 90. Just past mile 10 on Road #342, take USFS Road #7843 for 4 miles to Diamond Lake. The trailhead for Cliff Lake (USFS Trail #100) lies at the end of the road near the outlet of Diamond Lake. Cliff Lake lies approximately one mile above Diamond Lake on Trail #100.

**Campsites and Use:** Cliff Lake lies in a remote setting that receives moderate recreational use. There is an established trail around approximately half of the lake with multiple campsites and fire rings. 'Leave no trace' camping and recreating is encouraged in this area.

**Angling Opportunity:** Cliff Lake supports a population of westslope cutthroat trout. Steep, rocky shoreline topography makes angling from shore difficult or impossible over much of the perimeter. However, a trail follows approximately half of the shoreline and many fishing access points are available.

**Stocking History:** Cliff Lake has been stocked only with westslope cutthroat trout since 1982. The most recent plants occurred in 1993 and 2000. Prior to 1982, Cliff Lake was stocked several times with rainbow trout (1942 - 1962). MFWP plans to continue stocking westslope cutthroat trout every 7-10 years.

**Angling Pressure:** Estimated angling pressure from Montana state-wide mail surveys in 1995-2005 was low and averaged 102 angler-days per year.

**Other Nearby Lakes:** The only other lake near Cliff Lake is Diamond Lake. Diamond Lake lies at the end of USFS Road #7843 and the trailhead for USFS Trail #100, which leads to Cliff Lake.



**Montana Fish,  
Wildlife & Parks**

## Cliff Lake

Watercode: 05-8576

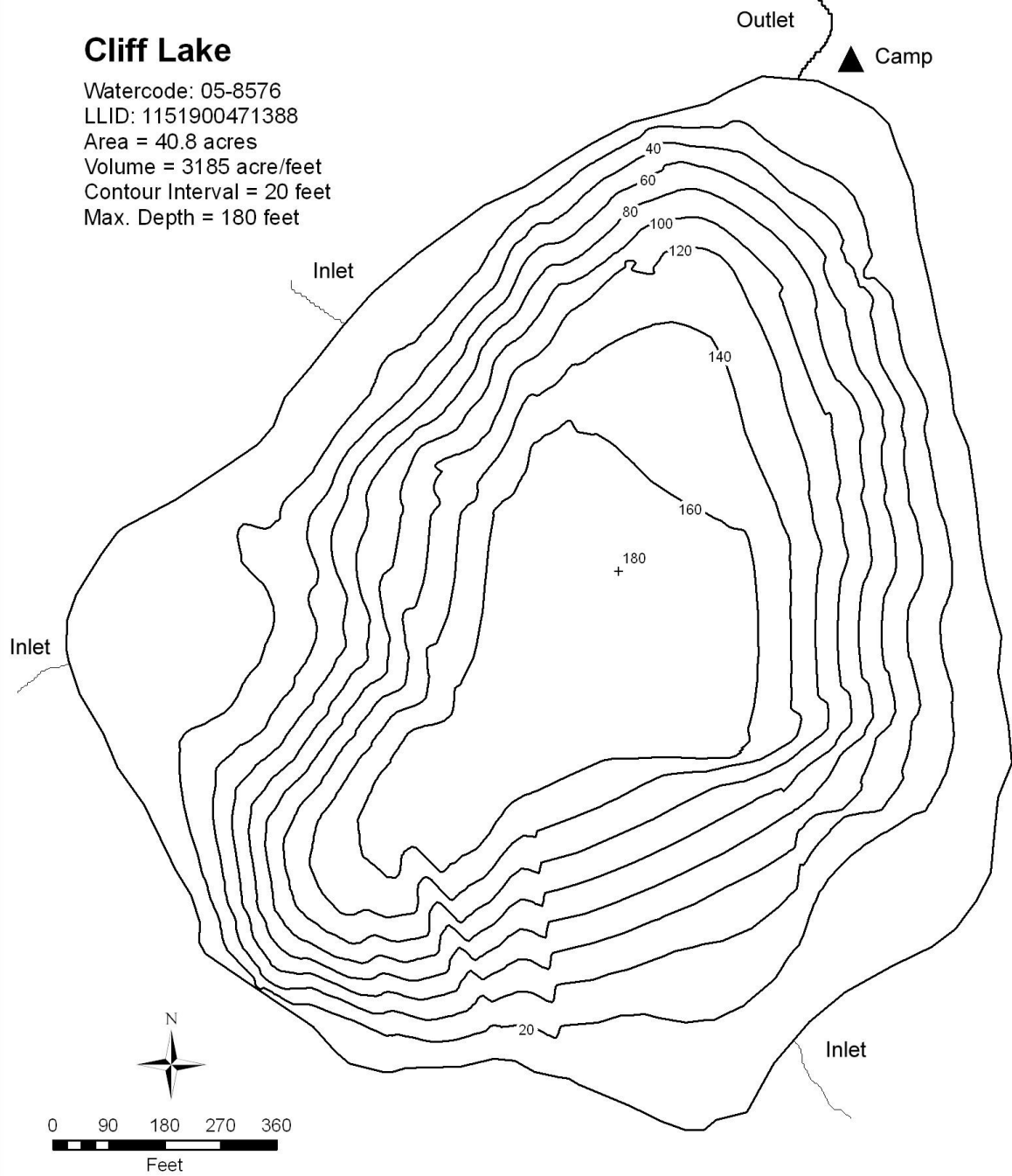
LLID: 1151900471388

Area = 40.8 acres

Volume = 3185 acre/feet

Contour Interval = 20 feet

Max. Depth = 180 feet



Data Source:  
Depth and perimeter points collected with recreational  
grade GPS unit and processed with ESRI ArcGIS 3D Analyst.  
Map produced by:  
Montana Fish, Wildlife & Parks  
Information Management Unit  
490 N. Meridian  
Kalispell, Montana 59901  
June 14, 2006

