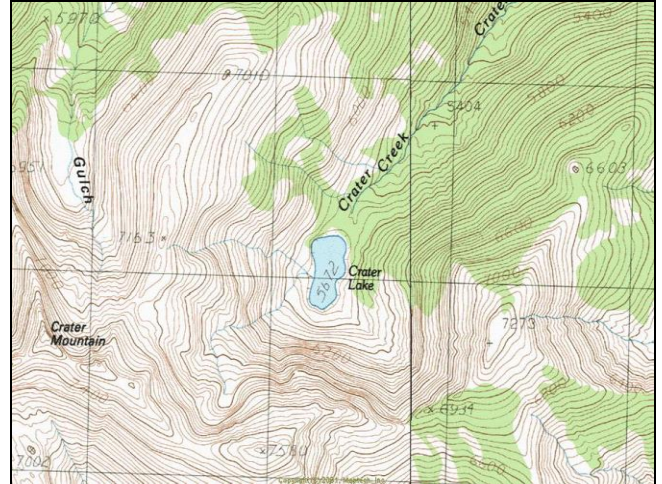


Crater Lake



Description: Crater Lake is a moderately sized (16.8 acre), remote, glacial cirque lake located in the North Fork Fish Creek drainage. The lake lies on the Lolo National Forest (Ninemile Ranger District) in the *proposed* Great Burn Wilderness Area.

Location: T14N, R26W, Section 34; Latitude N46.9273°, Longitude W 114.8810°; Nearest Town: Alberton, MT

Access: Crater Lake can most easily be accessed by taking Fish Creek Road (USFS Road #343) from Interstate Highway 90, then traveling west on USFS Road #7750 to the campground and Forest Service outpost (Clearwater Crossing) at the end of the road. Take the North Fork Fish Creek Trail (USFS Trail #103) approximately 4 miles to an unofficial pack trail to the southwest which leads to Crater Lake. The hike to the lake is only ~ 1.5 miles from the trail junction, but the trail is extremely steep.

Campsites and Use: Crater Lake lies in a remote setting that receives light use. However, there is a primitive trail around about half the lake and a campsite with a fire ring near the outlet. 'Leave no trace' camping and recreating is essential in this area as it is proposed wilderness.

Angling Opportunity: Crater Lake supports a population of westslope cutthroat trout. Shoreline topography on the south half of the lake is very steep, which limits access along the lake perimeter. However, several good access points exist for shoreline angling (primarily north half of lake).

Stocking History: Crater Lake has been stocked only with westslope cutthroat trout since 1971. There is no record of Crater Lake having been stocked prior to 1971. Since 1990, the lake was planted in 1993 and 2000. MFWP plans to continue stocking westslope cutthroat trout every 7-10 years in the future.

Angling Pressure: Estimated angling pressure from Montana state-wide mail surveys in 1995-2005 was low and averaged 21 angler-days per year.

Other Nearby Lakes: Crater Lake is relatively isolated. The nearest lake is French Lake, which would require traveling an additional 2.5 miles up the North Fork of Fish Creek (USFS Trail #103) and 2.6 miles on Trail #143 up French Creek to the lake. The Trio Lakes lie at the head end of the North Fork Fish Creek and would require a 4.5 mile trip up Trail #103 from the junction with the unofficial Crater Lake trail.



**Montana Fish,
Wildlife & Parks**

Crater Lake

Watercode: 05-8624

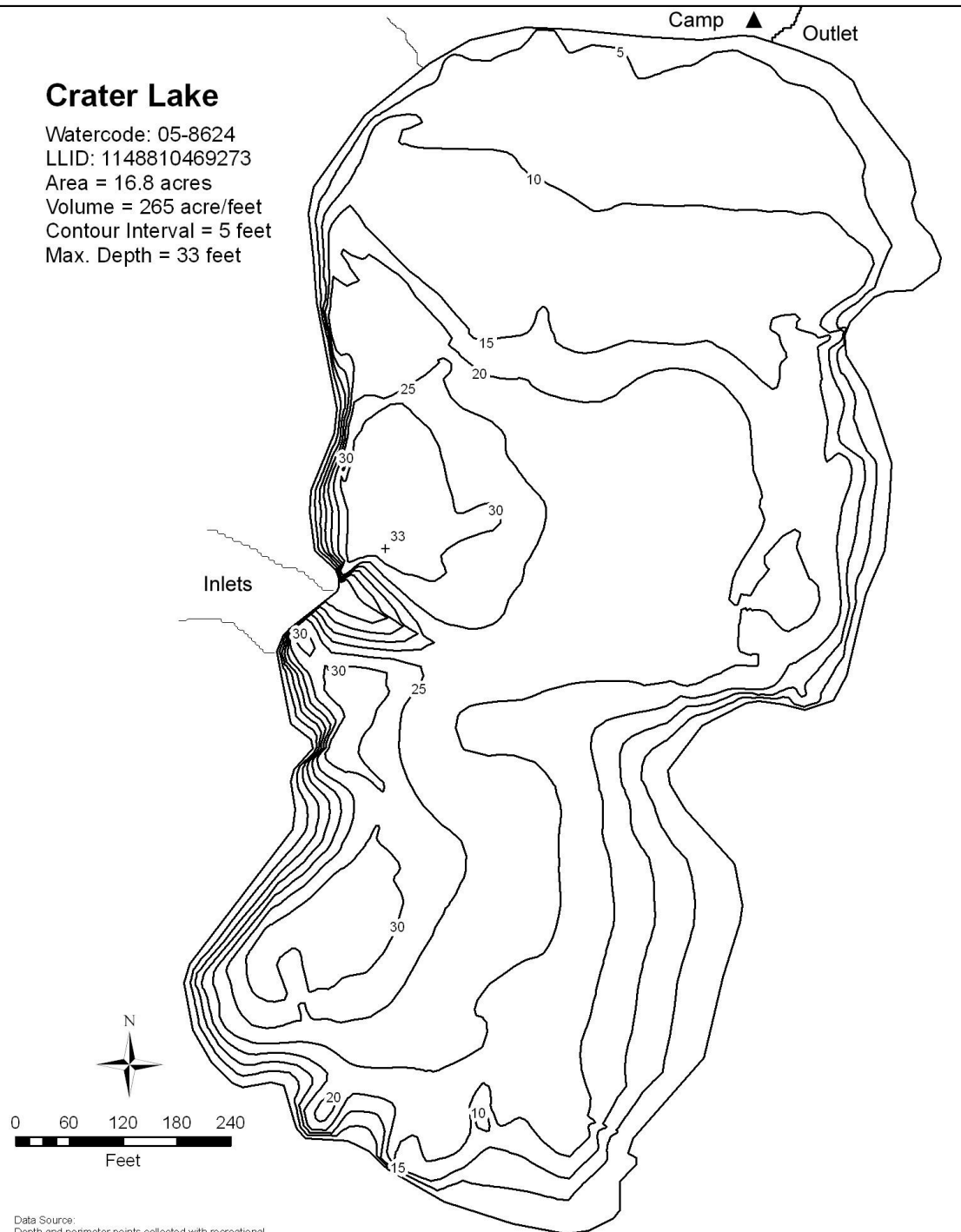
LLID: 1148810469273

Area = 16.8 acres

Volume = 265 acre/feet

Contour Interval = 5 feet

Max. Depth = 33 feet



Data Source:
Depth and perimeter points collected with recreational
grade GPS unit and processed with ESRI ArcGIS 3D Analyst.
Map produced by:
Montana Fish, Wildlife & Parks
Information Management Unit
490 N. Meridian
Kalispell, Montana 59901
June 14, 2006

