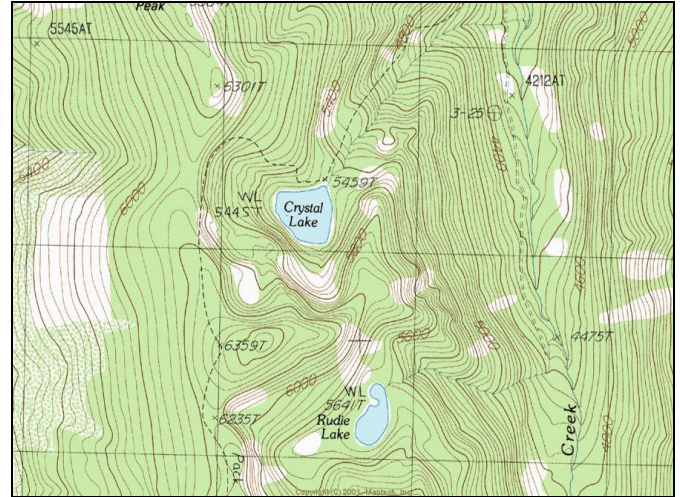


Crystal Lake



Description: Crystal Lake is a moderately sized (14.3 acres), deep glacial cirque lake located near the Idaho border in the Deer Creek (St. Regis River) drainage at 5,445 ft elevation. An earthen dam was also constructed at the northeast end to enhance water storage. The lake lies on the Lolo National Forest (Superior Ranger District).

Location: T18N, R30W, Section 28; Latitude N 47.2972°, Longitude W115.4200°; Nearest Town: St. Regis, MT

Access: There are two reasonable routes to Crystal Lake. The lake is most easily accessed by taking USFS Road #236 (Deer Creek Road) south from DeBorgia. Approximately 6.4 miles from DeBorgia, USFS Trail #269 runs southwest and Crystal Lake lies 1.4 miles up this trail. The other option is to take USFS Road #282 (Little Joe Creek Road) from St. Regis to the Idaho border. Once you reach the Idaho border, take USFS Road #391 northwest approximately 8.6 miles. Here, Trail #269 proceeds to the north, though it is not well marked. Crystal Lake lies just over 2 miles north on this trail. This would be a preferred route if you want to visit several lakes in one trip.

Campsites and Use: Crystal Lake lies in a semi-remote setting that receives moderate use. There is an established trail around the lake and multiple campsites with fire rings. 'Leave no trace' camping and recreating is encouraged in this area.

Angling Opportunity: Crystal Lake supports a population of brook trout that has moderate natural reproduction. Brook trout harvest is encouraged. Shoreline topography and access lends well to shoreline angling from ~ 90% of the lake's perimeter.

Stocking History: Brook trout were originally stocked in 1933. During the period 1949 to 1953, the lake was stocked with rainbow trout on three occasions. Crystal Lake has not been stocked since 1953, but MFWP plans to stock westslope cutthroat trout every 7-10 years in the future to diversify the fishery.

Angling Pressure: Estimated angling pressure from Montana state-wide mail surveys in 1995-2005 was low and averaged 62 angler-days per year.

Other Nearby Lakes: There are several other lakes near Crystal Lake. Rudie Lake lies about 0.5 mile southeast of Crystal Lake. To reach Rudie Lake, proceed south on USFS Trail #269 for 1.5 miles and take the remnant trail down to the lake. The trail to Rudie Lake is in poor condition and difficult to follow; expect some off-trail hiking. Clear Lake is 2 miles southeast of Crystal Lake and can easily be accessed via a short, steep trail from USFS Road #391, which runs along the Montana-Idaho divide. Hub, Hazel and Square lakes also lie nearby.



Montana Fish,
Wildlife & Parks

Crystal Lake

Watercode: 05-8656

LLID: 1154200472972

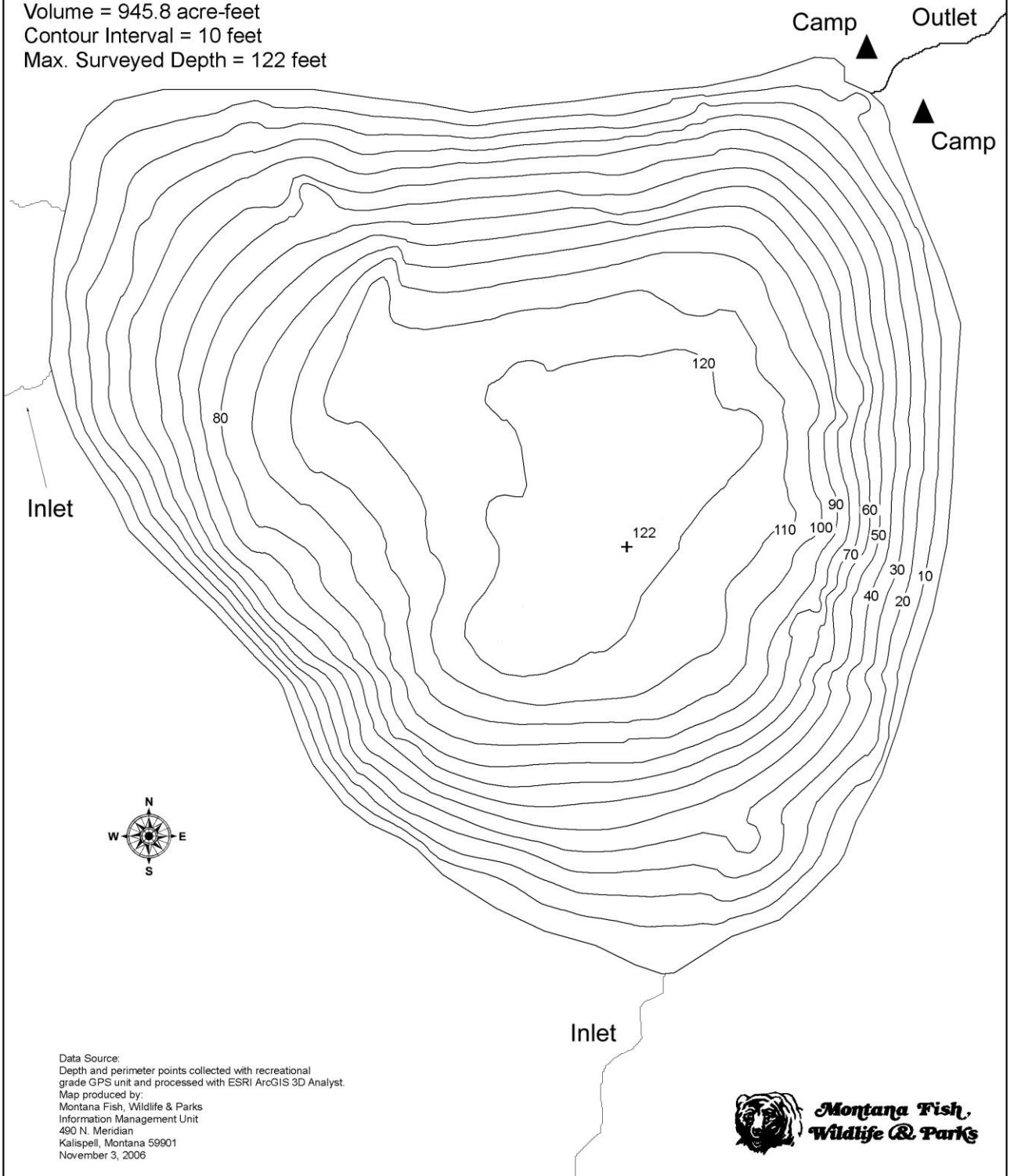
Survey Date:

Area = 14.3 acres

Volume = 945.8 acre-feet

Contour Interval = 10 feet

Max. Surveyed Depth = 122 feet



Data Source:
Depth and perimeter points collected with recreational
grade GPS unit and processed with ESRI ArcGIS 3D Analyst.
Map produced by:
Montana Fish, Wildlife & Parks
Information Management Unit
490 N. Meridian
Kalispell, Montana 59901
November 3, 2006



**Montana Fish,
Wildlife & Parks**