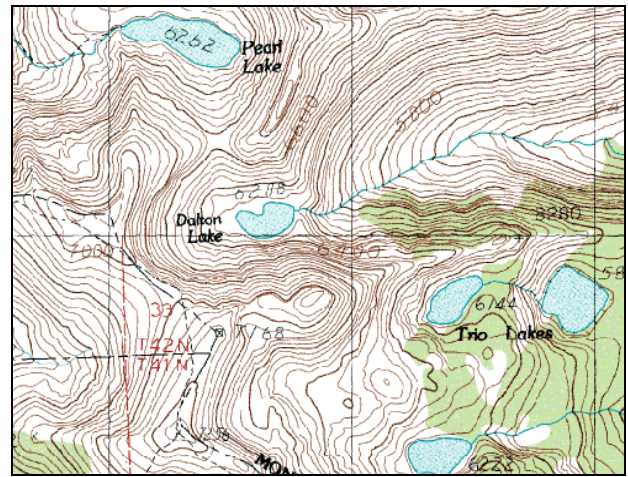


Dalton Lake



Description: Dalton Lake is a small (6.2 acres), remote glacial cirque lake located near the Idaho border in the North Fork Fish Creek drainage at 6,292 ft elevation. The lake lies on the Lolo National Forest (Ninemile Ranger District) in the proposed Great Burn Wilderness Area.

Location: T14N, R27W, Section 25; Latitude N46.9377°, Longitude W114.9550°; Nearest City: Superior, MT

Access: Access to Dalton Lake can most easily be obtained by taking USFS Rd #250 (Trout Creek Road) from Superior, MT. From USFS Rd #250, there are two options to hike. One option is to hike USFS Trail #171 to Heart Lake, then Trail #175 past Pearl Lake, to a saddle between Pearl and Dalton Lakes. From the top of this saddle, one can see and hike to Dalton Lake on an established, but non-designated trail. The other option is to take Trail #738 (Stateline National Recreation Trail) east-southeast, along the Idaho border, from the top of Hoodoo Pass (USFS Rd # 250) and descend into the lake. Both routes are between 4.5 and 5 miles hiking distance, with moderate difficulty.

Campsites and Use: Dalton Lake lies in a remote setting that receives light recreational use. However, there is an established trail around the lake with multiple campsites and fire rings. 'Leave no trace' camping and recreating is essential in this area as it is proposed wilderness.

Angling Opportunity: Dalton Lake supports a westslope cutthroat trout population that has limited natural reproduction and is supplemented with stocking. Shoreline topography lends well to shoreline angling from most of the lake perimeter.

Stocking History: Dalton Lake has been stocked only with westslope cutthroat trout since 1969. Prior to 1969, Dalton Lake was stocked once with rainbow trout in 1949. The lake was last planted in 2000 and will likely be stocked every 7-10 years with cutthroat trout in the future.

Angling Pressure: Estimated angling pressure from Montana state-wide mail surveys in 1995-2005 was low and averaged 56 angler-days per year.

Other Nearby Lakes: There are several other lakes nearby that lie in the upper Trout Creek and North Fork of Fish Creek drainages. Pearl Lake is just over the saddle north of Dalton Lake and Heart Lake is another mile beyond (northwest of) Pearl Lake. Both lakes lie in the Trout Creek drainage and would be passed on the way to Dalton Lake on USFS Trails #171 and # 175. Trio Lakes are just a short distance (less than one mile) southeast of Dalton Lake within the North Fork Fish Creek drainage, but getting to them will likely require ascending to the Stateline Trail (#738), heading southeast about a mile and a half, then finding a way down to them (no known established trail).

Dalton Lake

Watercode: 05-8672

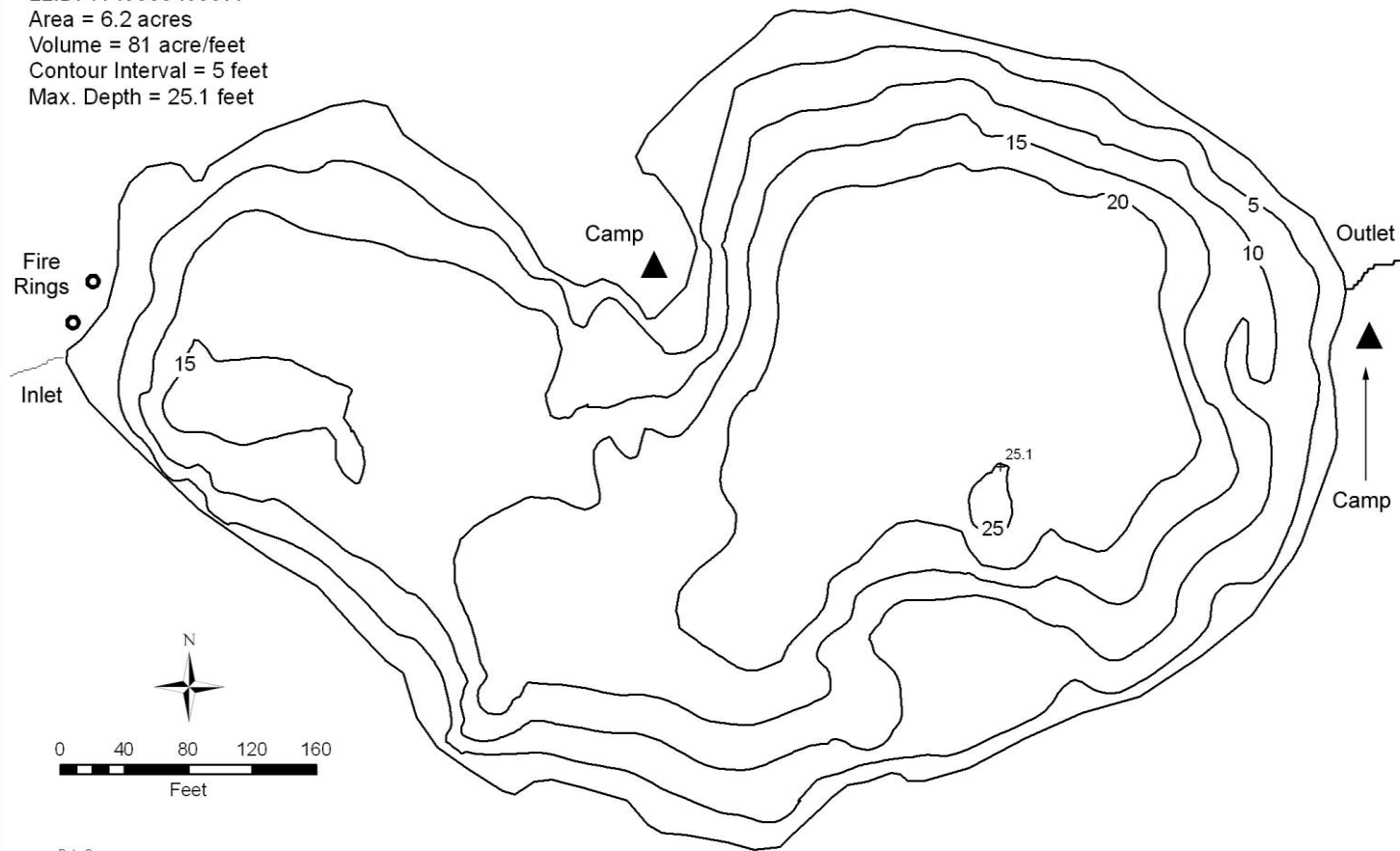
LLID: 1149550469377

Area = 6.2 acres

Volume = 81 acre/feet

Contour Interval = 5 feet

Max. Depth = 25.1 feet



Data Source:
Depth and perimeter points collected with recreational
grade GPS unit and processed with ESRI ArcGIS 3D Analyst.
Map produced by
Montana Fish, Wildlife & Parks
Information Management Unit
490 N. Meridian
Kalispell, Montana 59901
June 14, 2006

