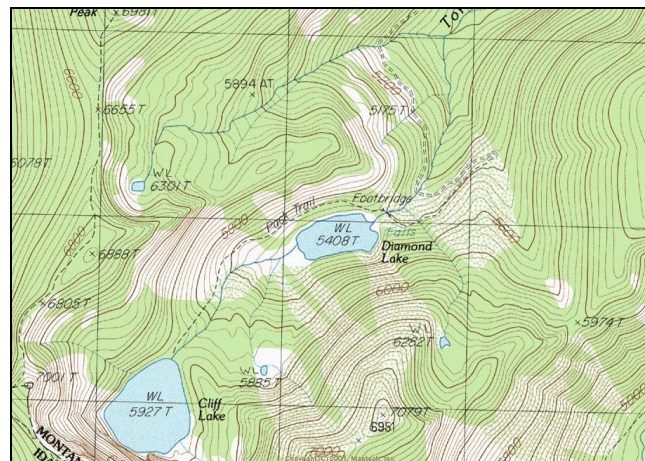


Diamond Lake



Description: Diamond Lake is a moderately sized (18.3 acres), glacial trough lake located near the Idaho border in the Dry Creek drainage at 5,408 ft elevation. The lake lies on the Lolo National Forest (Superior Ranger District).

Location: T16N, R28W, Section 17/18; Latitude N47.1472°, Longitude W115.1760°; Nearest Town: Superior, MT.

Access: The easiest way to get to Diamond Lake is to take USFS Road #342 southwest from Interstate Highway 90. A little over 10 miles up the road, take USFS Road #7843 for approximately 4 miles. The road ends at Diamond Lake.

Campsites and Use: Diamond Lake lies in a remote area, but it receives fairly heavy use due to direct road access. There is an established trail around the west side of the lake, and multiple campsites and fire rings. 'Leave no trace' camping and recreating is encouraged.

Angling Opportunity: Diamond Lake supports a westslope cutthroat trout population that has limited natural reproduction, as well as a brook trout population that has abundant natural reproduction. Westslope cutthroat trout may be out-migrants from Cliff Lake. Brook trout harvest is encouraged. Shoreline topography and access lends well to shoreline angling. Non-motorized boats can also be easily transported from the road access.

Stocking History: Diamond Lake has not been stocked since 1966. The lake was stocked four times with rainbow trout in the 1960's. It is not known when brook trout were introduced into the lake. Westslope cutthroat trout have likely drifted downstream from Cliff Lake. No additional stocking is planned.

Angling Pressure: Estimated angling pressure from Montana state-wide mail surveys in 1995-2005 was moderate/high for an alpine lake and averaged 251 angler-days per year.

Other Nearby Lakes: The only other lake nearby is Cliff Lake. To get to Cliff Lake from Diamond Lake, hike around Diamond Lake and up the drainage for approximately one mile to the southwest on USFS Trail #100. The trailhead for Trail #100 is at the end of USFS Road #7843 near the outlet of Diamond Lake.



**Montana Fish,
Wildlife & Parks**

Diamond Lake

Watercode: 05-8720

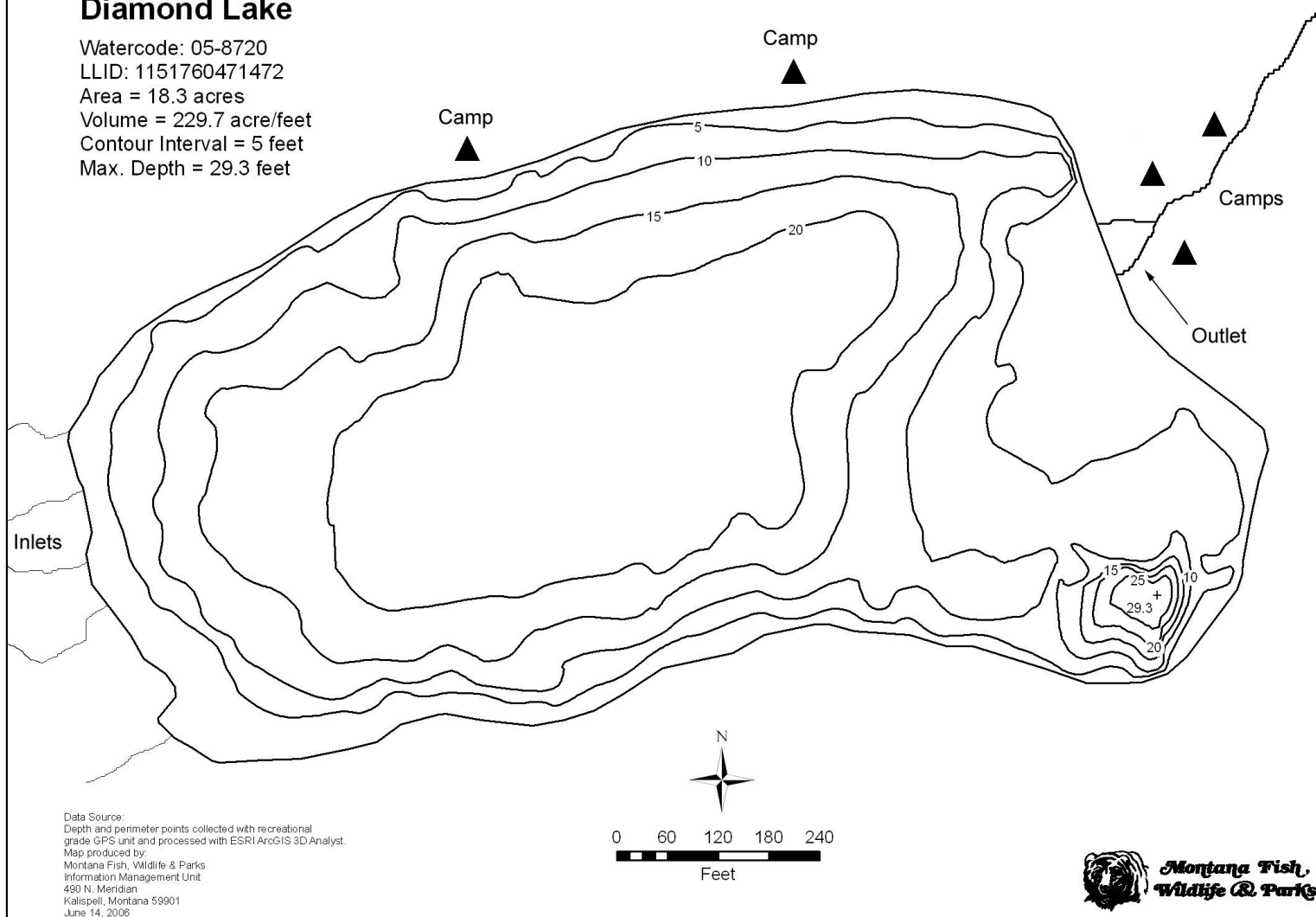
LLID: 1151760471472

Area = 18.3 acres

Volume = 229.7 acre/feet

Contour Interval = 5 feet

Max. Depth = 29.3 feet



Data Source:
Depth and perimeter points collected with recreational
grade GPS unit and processed with ESRI ArcGIS 3D Analyst.
Map produced by:
Montana Fish, Wildlife & Parks
Information Management Unit
490 N. Meridian
Kalispell, Montana 59901
June 14, 2006