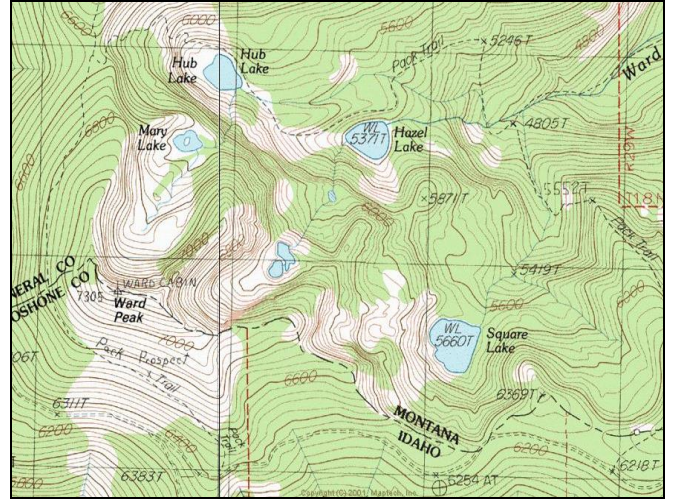


# Hazel Lake



**Description:** Hazel Lake is a small (7.6 acres), semi-remote glacial cirque lake located near the Idaho border in the Ward Creek (St. Regis River) drainage at 5,371 ft elevation. The lake lies on the Lolo National Forest (Superior Ranger District).

**Location:** T18N, R30W, Section 36; Latitude N 47.2730°, Longitude W115.3650°; Nearest Town: St. Regis, MT

**Access:** Hazel Lake can be accessed one of two ways. One way is to take Exit 26 off Interstate Highway 90 to USFS Road #889 (Ward Creek Road). Take this road approximately 6.3 miles to the trailhead for USFS Trail #262. Take Trail #262 for ~1.3 miles, then Trail #280 for ~0.8 miles to Hazel Lake (fairly steep hike). The other option is to take USFS Road #282 (Little Joe Creek Road) from St. Regis, MT to the Idaho border. Once you reach the Idaho border, take USFS Road #391 northwest ~4 miles to the upper Trail #262 trailhead. From the trailhead, proceed down (north) to the Trail #280 junction (same one as above). Hazel Lake lies ~0.8 miles from the junction on a relatively steep grade.

**Campsites and Use:** Hazel Lake lies in a semi-remote setting that receives moderate use. There is an established trail around much of the lake and a campsite with a fire ring. 'Leave no trace' camping and recreating is encouraged in this area.

**Angling Opportunity:** Hazel Lake supports a population of westslope cutthroat trout that has limited natural reproduction and is supplemented by stocking. Shoreline topography and access lends well to shoreline angling on about half of the lake.

**Stocking History:** Hazel Lake has been stocked five times with westslope cutthroat trout from 1971-2000. It was also stocked twice prior (1941, 1953) with an unknown strain of cutthroat trout. Hazel Lake will likely be stocked every 7-10 years with westslope cutthroat trout in the future.

**Angling Pressure:** Estimated angling pressure from Montana state-wide mail surveys in 1995-2005 was low and averaged 46 angler-days per year.

**Other Nearby Lakes:** There are several other lakes in the area. Hub Lake is less than 0.5 mile past Hazel Lake to the west-northwest on Trail #280. Mary Lake lies above Hub Lake on the same trail. Square Lake lies ~0.6 mile south-southeast of Hazel Lake, but getting to it from Hazel Lake would require off-trail hiking over steep terrain. There is a non-designated trail to Square Lake from USFS Road #391, which runs along the Montana-Idaho boarder.



**Montana Fish,  
Wildlife & Parks**

## Hazel Lake

Watercode: 05-8912

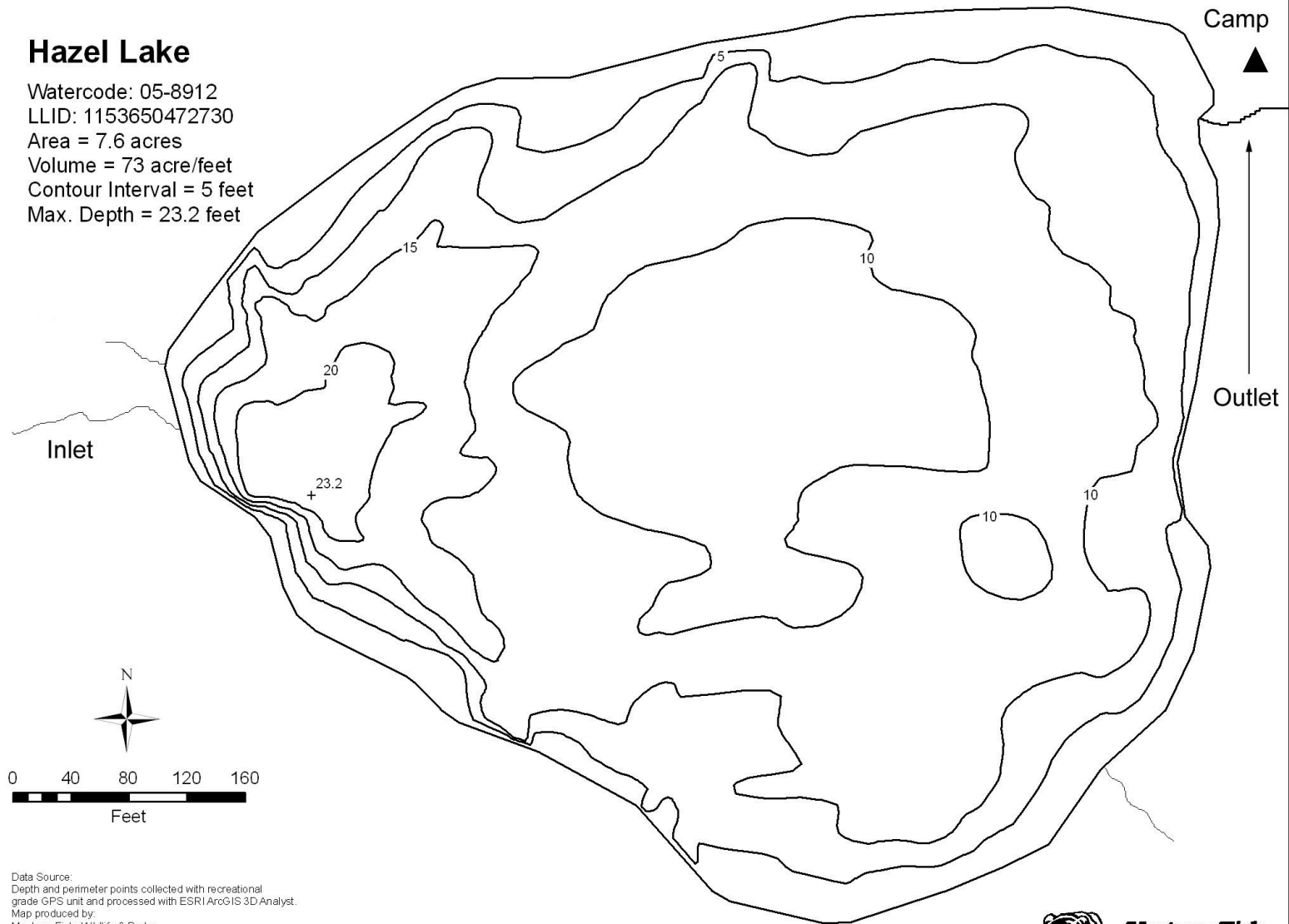
LLID: 1153650472730

Area = 7.6 acres

Volume = 73 acre/feet

Contour Interval = 5 feet

Max. Depth = 23.2 feet



Data Source:  
Depth and perimeter points collected with recreational  
grade GPS unit and processed with ESRI ArcGIS 3D Analyst.  
Map produced by:  
Montana Fish, Wildlife & Parks  
Information Management Unit  
490 N. Meridian  
Kalispell, Montana 59901  
June 14, 2006

