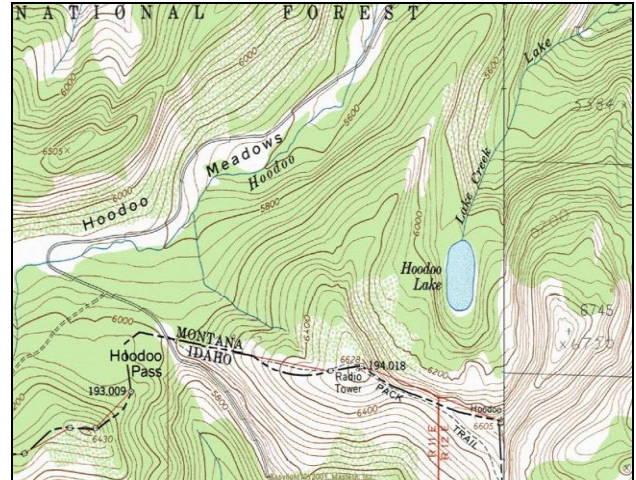


Hoodoo Lake



Description: Hoodoo Lake is a moderately sized (11.4 acres), semi-remote glacial cirque lake located near the Idaho border in the South Fork Trout Creek drainage at 5,856 ft elevation. The lake lies on the Lolo National Forest (Superior Ranger District).

Location: T14N, R27W, Sections 10, 15; Latitude N46.9781°, Longitude W 115.0030°; Nearest Town: Superior, MT.

Access: Hoodoo Lake is most easily accessed by taking USFS Rd #250 (Trout Creek Road) from Superior, MT. From USFS Rd #250, there are two options to hike. One option is to hike USFS Trail #111 for ~ 1.4 miles to the lake. The other option is to take USFS Trail #738 (Stateline National Recreation Trail) east-southeast along the Idaho border from the top of Hoodoo Pass (USFS Rd # 250), then take Trail #111 down to the lake. This route is ~ 2 miles from the road to the lake.

Campsites and Use: Hoodoo Lake lies in a semi-remote setting that receives moderate use. There is an established trail around the lake with multiple campsites and fire rings. 'Leave no trace' camping and recreating is encouraged.

Angling Opportunity: Hoodoo Lake supports a brook trout population that has substantial natural reproduction. Harvest of brook trout is encouraged. Shoreline topography and access lends well to shoreline angling.

Stocking History: Stocking records indicate that Hoodoo Lake was planted in 1933 with brook trout. This population is now self-sustaining. The only other stocking record for Hoodoo Lake indicates that cutthroat trout were planted in 1931.

Angling Pressure: Estimated angling pressure from Montana state-wide mail surveys in 1995-2005 was low and averaged 34 angler-days per year.

Other Nearby Lakes: There are several other lakes in the general vicinity of Hoodoo Lake, but none are close. Heart, Pearl, and Dalton Lakes are approximately 3 miles southeast of Hoodoo Lake. Accessing them would require either ascending to the Stateline Trail (#738) and hiking 2.5 to 4.5 miles southeast or returning to USFS Road #250 and hiking up the South Fork of Trout Creek on USFS Trail #171 (~ 2.5 miles to the nearest lake). Trail Lake is 2.5 miles northwest of Hoodoo Lake. From Hoodoo Lake, return to USFS Road #250, take USFS Road #388 to Trail #156 and hike 2.5 miles to the lake.



**Montana Fish,
Wildlife & Parks**

Hoodoo Lake

Watercode: 05-8992

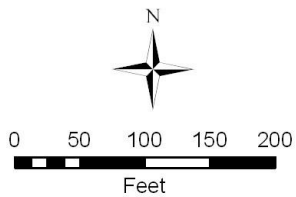
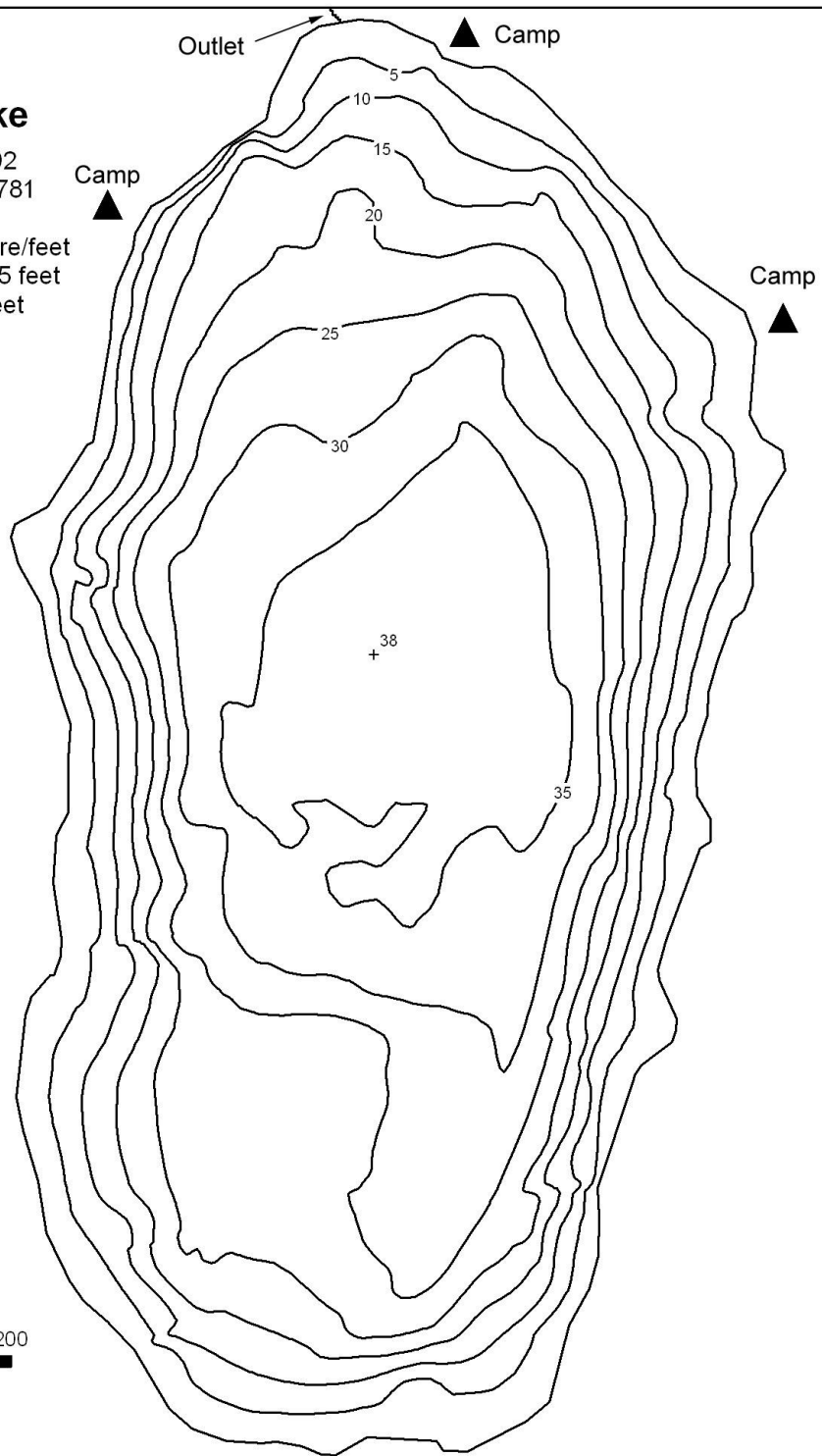
LLID: 1150030469781

Area = 11.4 acres

Volume = 233.3 acre/feet

Contour Interval = 5 feet

Max. Depth = 38 feet



Data Source:
Depth and perimeter points collected with recreational
grade GPS unit and processed with ESRI ArcGIS 3D Analyst.
Map produced by:
Montana Fish, Wildlife & Parks
Information Management Unit
490 N. Meridian
Kalispell, Montana 59901
June 14, 2006



**Montana Fish,
Wildlife & Parks**