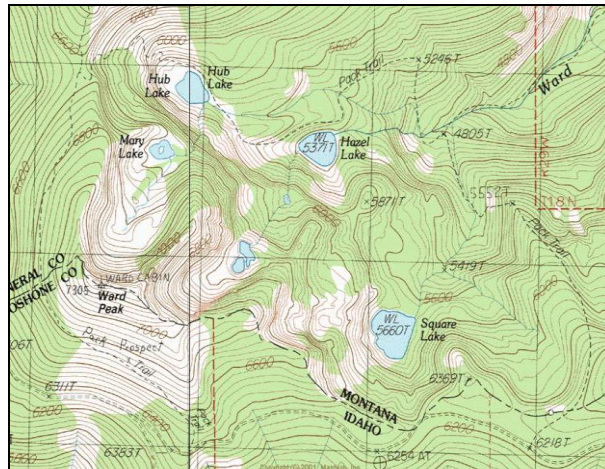
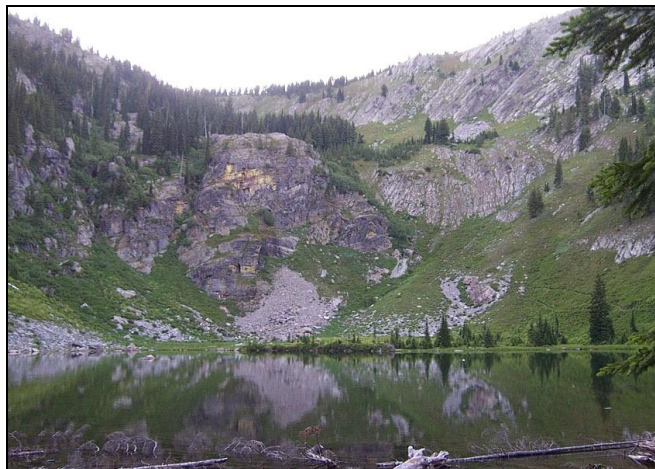


# Hub Lake



**Description:** Hub Lake is a small (5.6 acres), remote glacial cirque lake located near the Idaho border in the Ward Creek (St. Regis River) drainage at 5,698 ft elevation. The lake lies on the Lolo National Forest (Superior Ranger District).

**Location:** T18N, R30W, Section 35; Latitude N 47.2760°, Longitude W115.3760°; Nearest Town: St. Regis, MT

**Access:** There are several ways to access Hub Lake. The most common route is to take Exit 26 off Interstate Highway 90 to USFS Road #889 (Ward Creek Road). Take Road #889 for ~ 6.3 miles to the USFS Trail #262 trailhead. Approximately 1.3 miles up Trail #262, take Trail #280 to the north (right). This steep trail will lead past Hazel Lake to Hub Lake ~ 1.3 miles from the trail junction. Another option is to take USFS Road #282 (Little Joe Creek Road) from St. Regis to the Idaho border. Once you reach the Idaho border, take USFS Road #391 northwest ~ 4 miles to the Trail #262 trailhead. This trail runs north for ~ 1.4 miles to the same Trail # 280 junction mentioned above. Hub Lake can also be accessed off USFS Road #391 by Trail #250 which lies another 1.4 miles to the east of Trail #280. Trail # 250 intersects Trail #280 near Hub Lake ~ 1.6 miles north of the trailhead.

**Campsites and Use:** Hub Lake lies in a semi-remote setting that receives light use. There are two established campsites with fire rings near the lake. 'Leave no trace' camping and recreating is encouraged in this area.

**Angling Opportunity:** Hub Lake supports a population of westslope cutthroat trout that has substantial natural reproduction. Shoreline topography and access lends well to shoreline angling for much of the lake's perimeter.

**Stocking History:** Hub Lake has been stocked only with westslope cutthroat trout since 1975. It was also stocked twice prior (1941, 1953) with an unknown strain of cutthroat trout. Stocking has been discontinued at Hub lake as the population appears to be self-sustaining.

**Angling Pressure:** Estimated angling pressure from Montana state-wide mail surveys in 1995-2005 was low and averaged 51 angler-days per year.

**Other Nearby Lakes:** There are several other lakes in the area. Hazel Lake is < 0.5 mile east-southeast of Hub Lake and lies just off USFS Trail #280. Square Lake is less than a mile southeast of Hazel Lake, but getting to it directly would require off-trail hiking over steep terrain. There is a trail to Square Lake from USFS Road #391 on the Montana-Idaho divide. Clear Lake is ~ 1.5 miles west-southwest of Hub Lake, but getting there also requires access from USFS Road #391 via a steep trail from the divide.

## Hub Lake

Watercode: 05-9024

Survey Date: 6/19/2004

Area = 5.6 acres

Volume = 37.8 acre/feet

Contour Interval = 5 feet

Max. Depth = 20.1 feet

