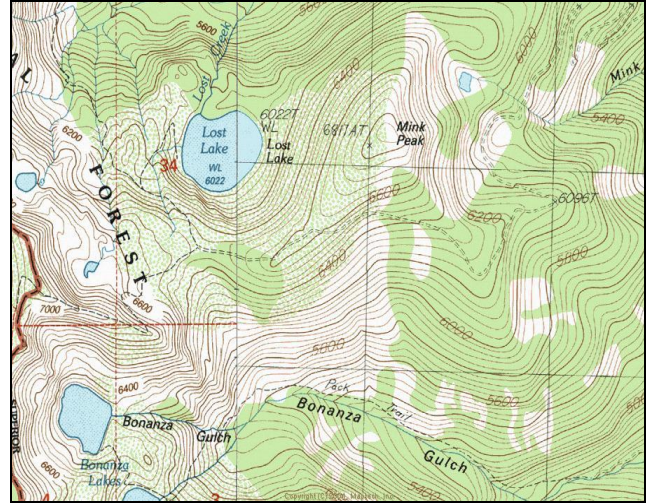


Lost Lake



Description: Lost Lake is a large (33.9 acres), remote glacial cirque lake located near the Idaho border in the Cedar Creek drainage at 6,022 ft elevation. The lake lies on the Lolo National Forest (Superior Ranger District).

Location: T16N, R28W, Section 34; Latitude N47.1026°, Longitude W115.1260°; Nearest Town: Superior, MT

Access: Lost Lake is most easily accessed by taking USFS Road #320 (Cedar Creek Road) from Superior, Montana for ~ 19 miles. Turn right on USFS Road #7763 near the Oregon Lakes trailhead. Take Road #7763 north for ~ 2.6 miles to USFS Road #7829. Go left on Road #7829 and drive to the end (~ 4.5 miles). Take the steep trail, roughly 1 mile in length, to the lake.

Campsites and Use: Lost Lake lies in a fairly remote setting that receives moderate use. There is an established trail around most of the lake with multiple campsites and fire rings. 'Leave no trace' camping and recreating is encouraged.

Angling Opportunity: Lost Lake supports a brook trout population that has a high rate of natural reproduction. Brook trout harvest is encouraged. Shoreline topography and access lends well to shoreline angling from most of the lake's perimeter.

Stocking History: Lost Lake has not been stocked since 1966. Rainbow trout were stocked into Lost Lake in both 1965 and 1966. Although the lake supports brook trout, there is no record of brook trout stocking.

Angling Pressure: Estimated angling pressure from Montana state-wide mail surveys in 1995-2005 was very low and averaged 5 angler-days per year.

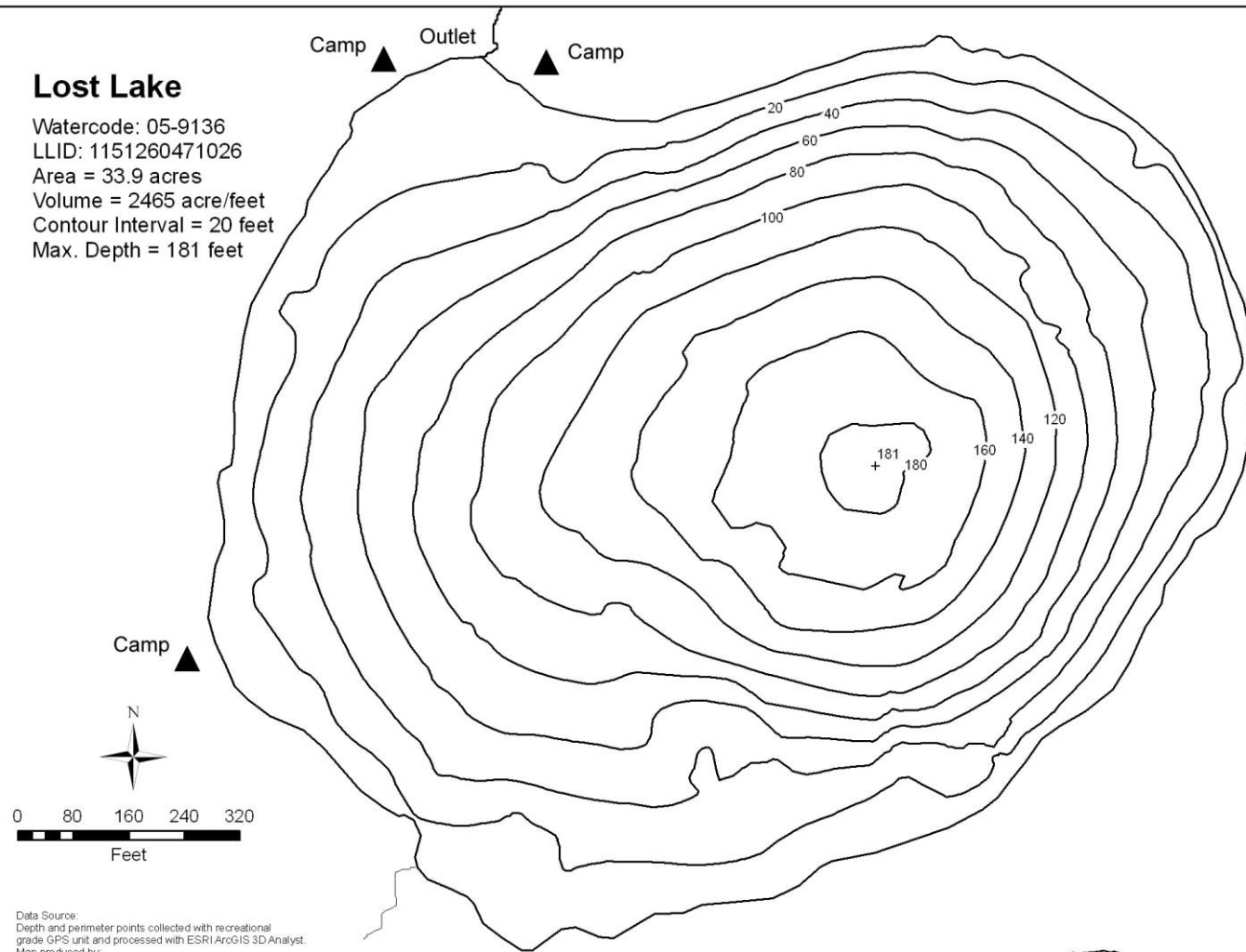
Other Nearby Lakes: There are several other lakes near Lost Lake. The Bonanza Lakes lie ~ 0.5 mile south-southwest of the end of USFS Road #7829, although accessing them from this point would require off-trail hiking over steep terrain. The Oregon Lakes are < 1 mile south of the junction of Roads #320 and #7763. A short (~ 0.5 mile) road going south from this junction leads to the trailhead. Missoula Lake is also nearby. Rather than taking Road #7763, go another 3.3 miles on Road #320. A USFS campground lies at the trailhead to the lake, which is less than 0.5 mile below.



**Montana Fish,
Wildlife & Parks**

Lost Lake

Watercode: 05-9136
LLID: 1151260471026
Area = 33.9 acres
Volume = 2465 acre/feet
Contour Interval = 20 feet
Max. Depth = 181 feet



Data Source:
Depth and perimeter points collected with recreational
grade GPS unit and processed with ESRI ArcGIS 3D Analyst.
Map produced by:
Montana Fish, Wildlife & Parks
Information Management Unit
490 N. Meridian
Kalispell, Montana 59901
June 14, 2006

