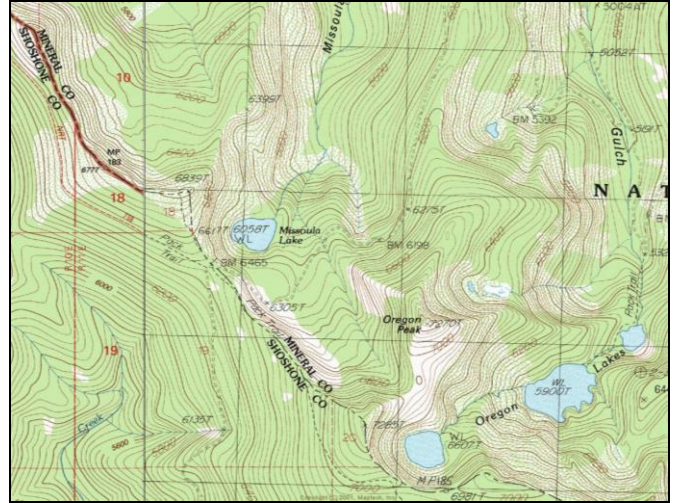


Missoula Lake



Description: Missoula Lake is a moderately sized (11.4 acres), semi-remote glacial cirque lake located near the Idaho border in the Cedar Creek drainage at 6,058 ft elevation. The lake lies on the Lolo National Forest (Superior Ranger District).

Location: T15N, R27W, Section 15; Latitude N47.0634°, Longitude W115.1160°; Nearest Town: Superior, MT

Access: Access to Missoula Lake can most easily be obtained by taking USFS Road #320 (Cedar Creek Road) from Superior, Montana for ~ 22 miles. There is a developed USFS campground at the trailhead for lake access. The trail to the lake is < 0.5 miles.

Campsites and Use: Missoula Lake lies in a semi-remote setting, but receives heavy use. There is a trail around much of the lake, one campsite at the lake, and a developed USFS campground with fire rings and latrines just above the lake. 'Leave no trace' camping and recreating is encouraged.

Angling Opportunity: Missoula Lake supports a westslope cutthroat trout population that has limited natural reproduction. Shoreline topography and access lends well to shoreline angling from about half of the lake's perimeter. There are many frequently used angling locations around the lake.

Stocking History: Missoula Lake has been stocked only with westslope cutthroat trout since 1993. Prior to that it had been stocked with rainbow trout and cutthroat trout. Since 1990, the lake was planted in 1993, 2000, and 2005. Frequent westslope cutthroat trout stocking will likely continue in the future.

Angling Pressure: Estimated angling pressure from Montana state-wide mail surveys in 1995-2005 was high for an alpine lake and averaged 144 angler-days per year.

Other Nearby Lakes: There are several other lakes near Missoula Lake. The Oregon Lakes are less than one mile south of the junction of USFS Roads #320 and #7763 (roughly 3 miles back towards Superior on road #320). A short (0.5 mile) road going south from this junction takes you to the trailhead, and Lower and Middle Oregon Lakes are within a mile. The Bonanza Lakes are less than two miles northwest of Missoula Lake, and can be accessed either off the Stateline National Recreation Trail (#738) above Missoula Lake, or by taking USFS Road #7763 and Trail #616.



**Montana Fish,
Wildlife & Parks**

Missoula Lake

Watercode: 05-9248

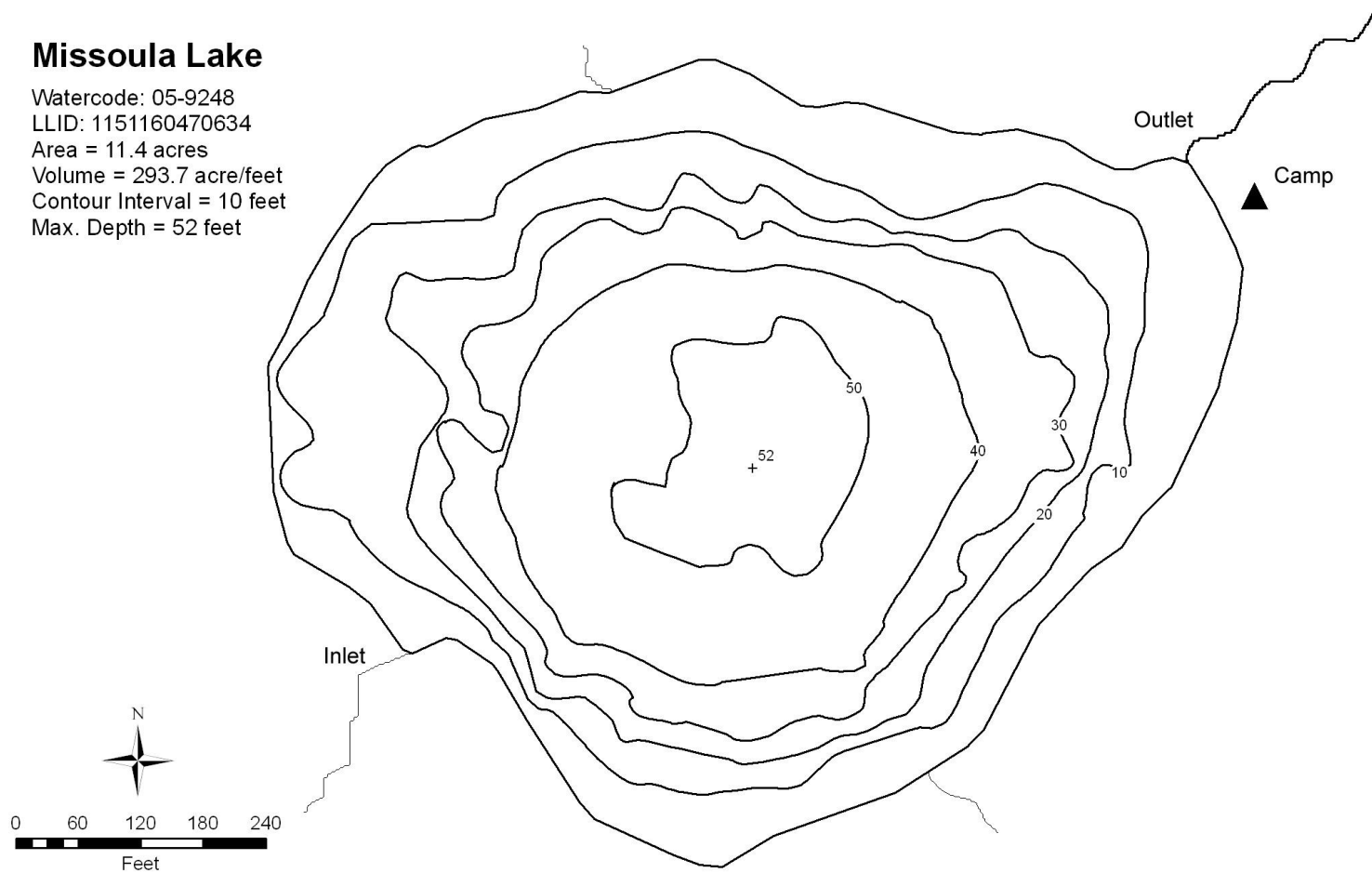
LLID: 1151160470634

Area = 11.4 acres

Volume = 293.7 acre/feet

Contour Interval = 10 feet

Max. Depth = 52 feet



Data Source:
Depth and perimeter points collected with recreational
grade GPS unit and processed with ESRI ArcGIS 3D Analyst.
Map produced by:
Montana Fish, Wildlife & Parks
Information Management Unit
490 N. Meridian
Kalispell, Montana 59901
June 14, 2006

