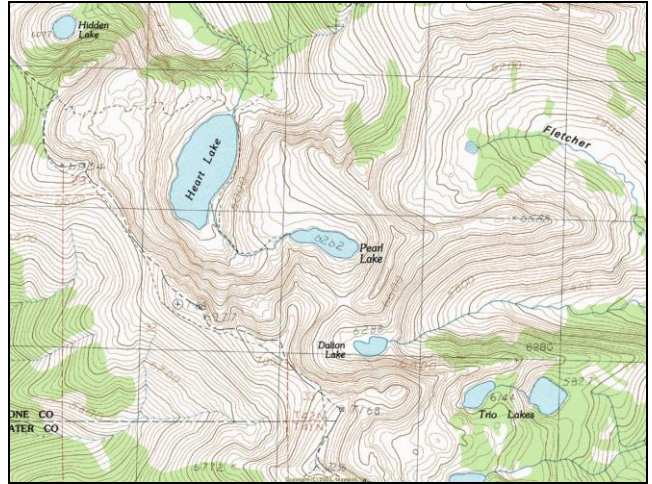


Pearl Lake



Description: Pearl Lake is a moderately sized (14.9 acre), semi-remote shallow cirque lake located near the Idaho border in the South Fork Trout Creek drainage at 6,262 ft elevation, just upstream of Heart Lake. The lake lies on the Lolo National Forest (Superior Ranger District).

Location: T14N, R27W, Section 25; Latitude N46.9445°, Longitude W 114.9590°; Nearest Town: Superior, MT.

Access: Access to Pearl Lake can most easily be obtained by taking USFS Road #250 (Trout Creek Road) from Superior, MT. From Road #250, there are two options to hike. One option is to hike Trail #171 to Heart Lake, then Trail #175 to Pearl Lake. This route is approximately 3.5 miles. The other option is to take Trail #738 (Stateline National Recreation Trail) east-southeast, along the Idaho border, from the top of Hoodoo Pass (USFS Road #250), then take Trail #175 northeast to Pearl Lake. This route is approximately 5 miles.

Campsites and Use: Pearl Lake lies in a remote setting that receives moderate use. There is at least one a well-established campsite and a partial trail around the lake.

Angling Opportunity: Pearl Lake supports a population of brook trout that is supplemented with stocked westslope cutthroat trout. Shoreline topography and access lends well to shoreline angling from most of the lake's perimeter.

Stocking History: Pearl Lake has been stocked four times with westslope cutthroat trout from 1969-1978. Prior to that, it had been stocked once with brook trout in 1938. The lake has not been stocked since 1978, but will be re-instituted beginning in 2007 to diversify the fishery.

Angling Pressure: Estimated angling pressure from Montana state-wide mail surveys in 1995-2005 was low and averaged 40 angler-days per year.

Other Nearby Lakes: Pearl Lake is located near several lakes in upper Trout and Fish Creeks. Pearl Lake lies between Heart Lake (Trail #175) and Dalton Lake (non-designated trail), which are both within one mile. A more ambitious side trip from Pearl Lake would be to the Trio Lakes, which are only about a mile away (map distance). However, getting to them will likely require ascending to the Stateline Trail (#738), heading southeast ~1.5 miles, then finding a way down to them (no known established trail).



**Montana Fish,
Wildlife & Parks**

Pearl Lake

Watercode: 05-9360

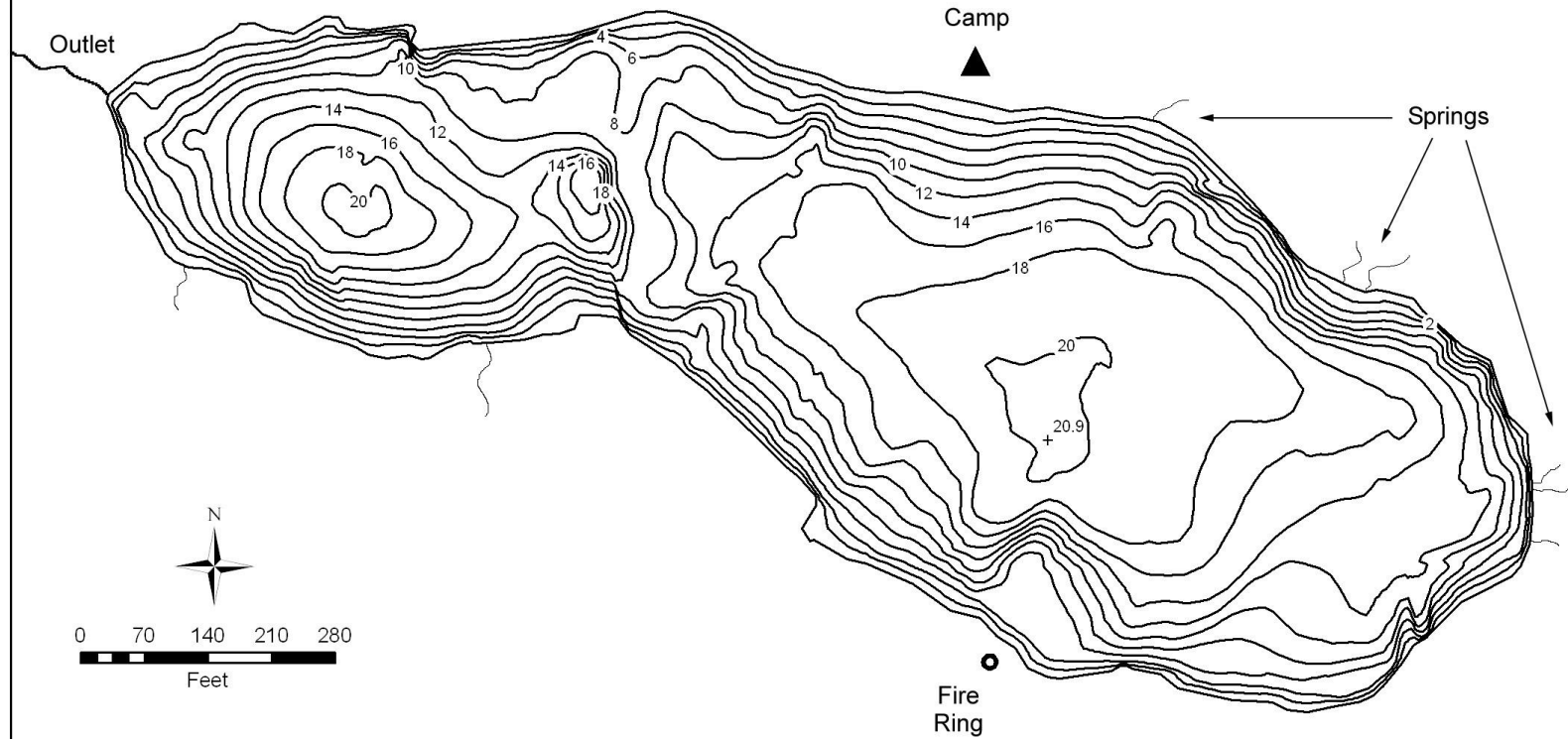
LLID: 1149590469445

Area = 14.9 acres

Volume = 168.4 acre/feet

Contour Interval = 2 feet

Max. Depth = 20.9 feet



Data Source:
Depth and perimeter points collected with recreational
grade GPS unit and processed with ESRI ArcGIS 3D Analyst.
Map produced by:
Montana Fish, Wildlife & Parks
Information Management Unit
490 N. Meridian
Kalispell, Montana 59901
June 14, 2006

