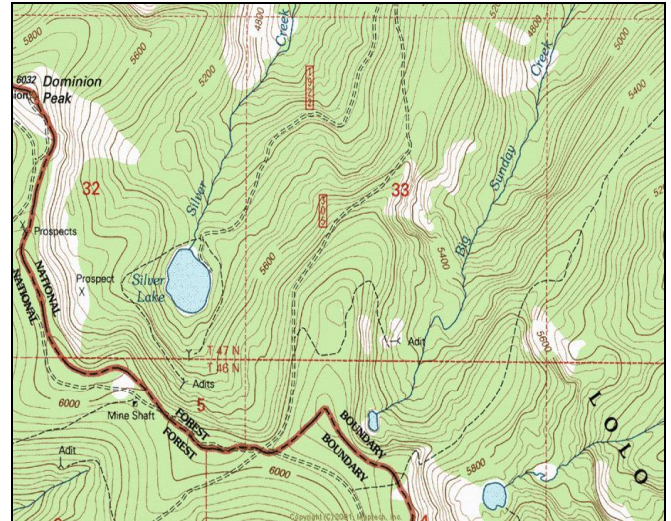


# Silver Lake



**Description:** Silver Lake is a moderately sized (12.9 acres), semi-remote glacial cirque lake located near the Idaho border in the Silver Creek (St. Regis River) drainage at 5,314 ft elevation. The lake lies on the Lolo National Forest (Superior Ranger District).

**Location:** T19N, R31W, Section 32; Latitude N47.3594°, Longitude W 115.5650°; Nearest Town: St. Regis, MT

**Access:** Access to Silver Lake can most easily be obtained by taking the Saltese Exit from Interstate Highway 90 west of St. Regis, MT, then going south on USFS Road #305. After ~ 3.5 miles, take USFS Road #9122 for ~1.3 miles. The road ends at the lake.

**Campsites and Use:** Silver Lake lies in a semi-remote setting that receives heavy use (for an alpine lake) due to its ease of access. There is an established trail around the lake with multiple campsites and fire rings. 'Leave no trace' camping and recreating is encouraged.

**Angling Opportunity:** Silver Lake supports a brook trout population that has substantial natural reproduction. Brook trout harvest is encouraged. Shoreline topography and access lends well to shoreline angling from most of the lake's perimeter.

**Stocking History:** Silver Lake has not been stocked since 1964. From 1932 to 1964, the lake was stocked with cutthroat trout, rainbow trout, brook trout, and brown trout. Brook trout are currently the only species known to be present.

**Angling Pressure:** Estimated angling pressure from Montana state-wide mail surveys in 1995-2005 was low and averaged 52 angler-days per year.

**Other Nearby Lakes:** There is just one other lake in the immediate vicinity of Silver Lake. Tadpole Lake is 1.1 miles southeast of Silver Lake. From Silver Lake, return to USFS Road #305 and drive to the Idaho border. From this point, there are two options to access Tadpole Lake. The first is to proceed southeast on USFS Road #391 for 0.3 miles to Trail #255. Hike trail #255 northeast 0.5 mile, and then hike off-trail to the lake. The second option is to travel southeast on USFS Road #391 one mile, and hike an unofficial mile-long trail north to the lake. Be sure to not accidentally hike Trail # 1268, which heads northeast off the ridge immediately.



**Montana Fish,  
Wildlife & Parks**

## Silver Lake

Watercode: 05-9552

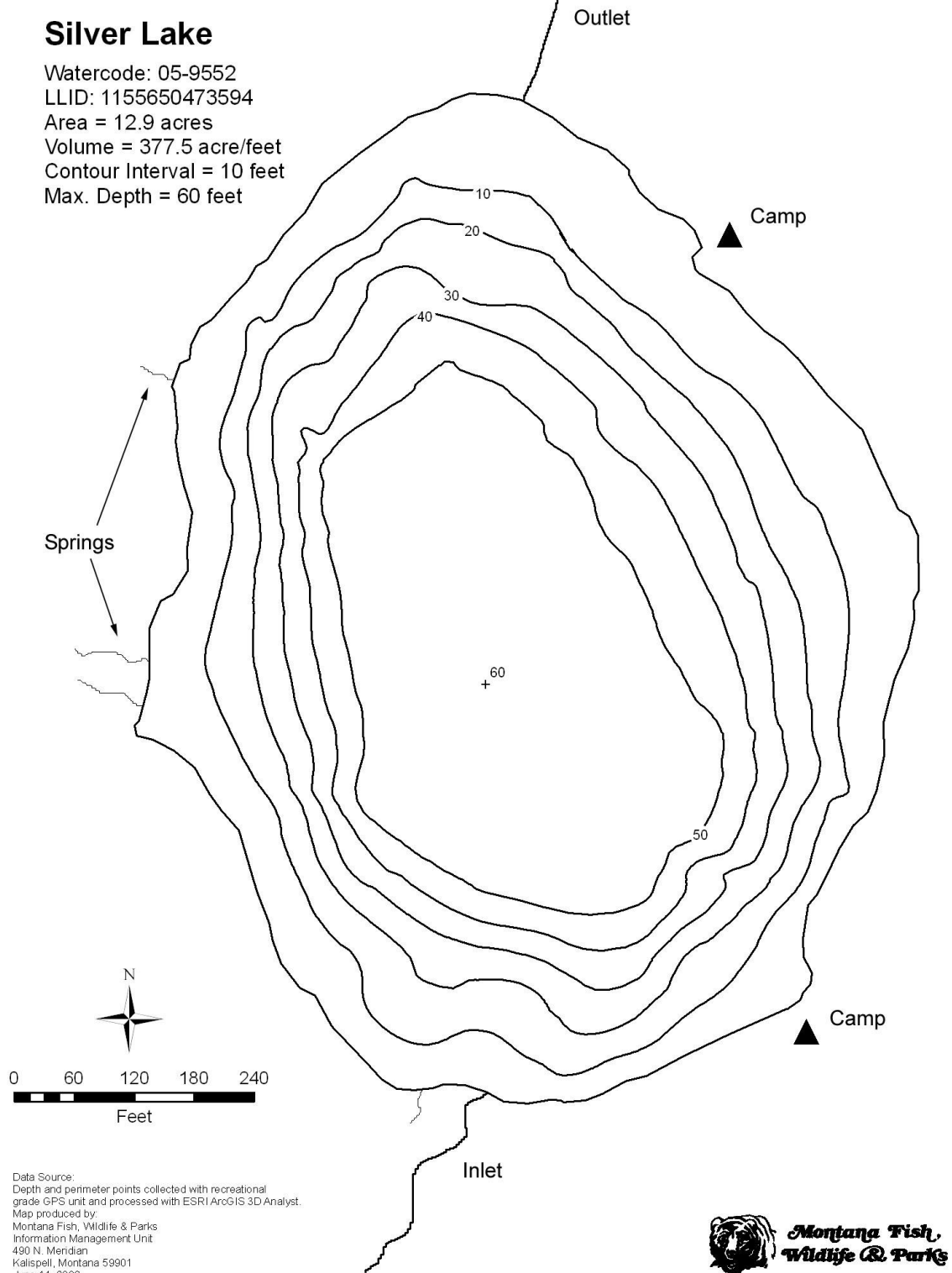
LLID: 1155650473594

Area = 12.9 acres

Volume = 377.5 acre/feet

Contour Interval = 10 feet

Max. Depth = 60 feet



Data Source:  
Depth and perimeter points collected with recreational  
grade GPS unit and processed with ESRI ArcGIS 3D Analyst.  
Map produced by:  
Montana Fish, Wildlife & Parks  
Information Management Unit  
490 N. Menden  
Kalispell, Montana 59901  
June 14, 2006

